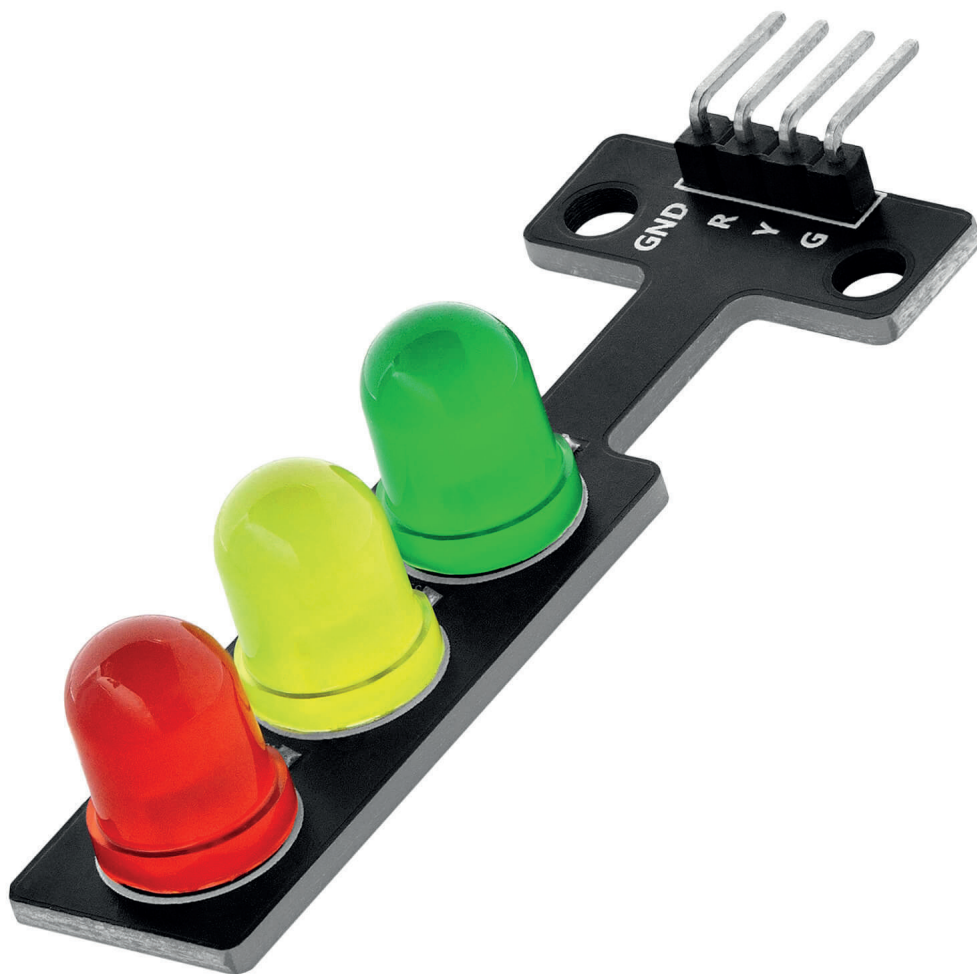


LED Ampel Modul Datenblatt



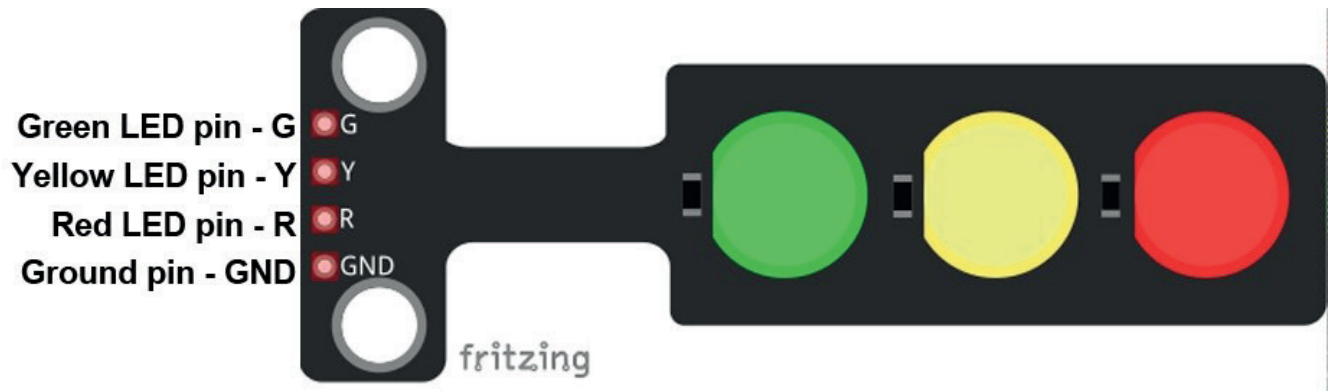
Content:

- [1. Specifications](#)
- [2. Module Pinout](#)
- [3. Connection Diagram](#)

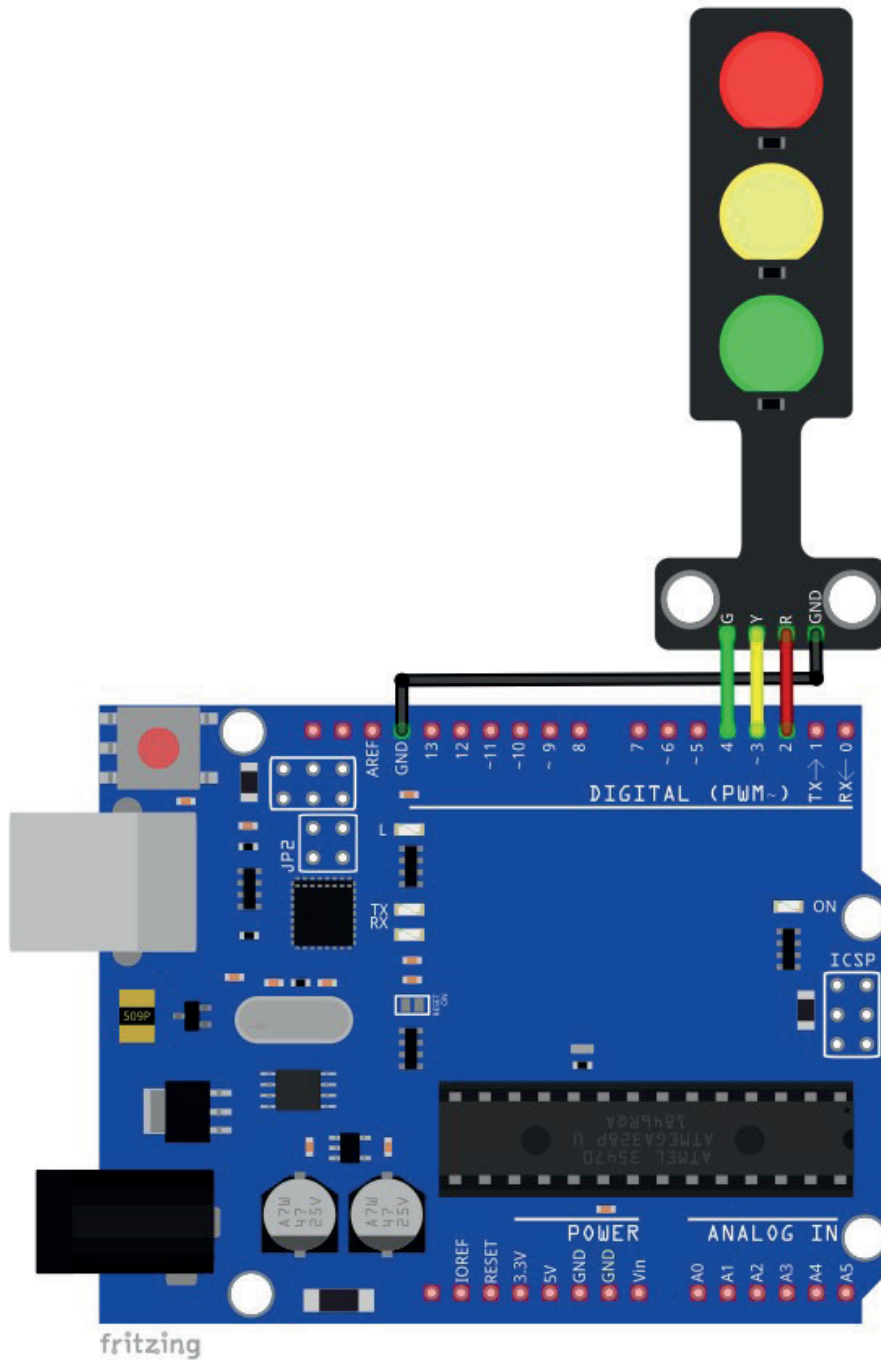
1. Specifications

Operating Voltage Range	3.3v to 5V
Current Consumption	4mA at 3.3V, 9mA at 5V
Single LED Diameter	8mm
Mounting Holes Diameter	3mm
Dimensions	56mm x 21mm x 11mm (2.2in x 0.8in x 0.4in)

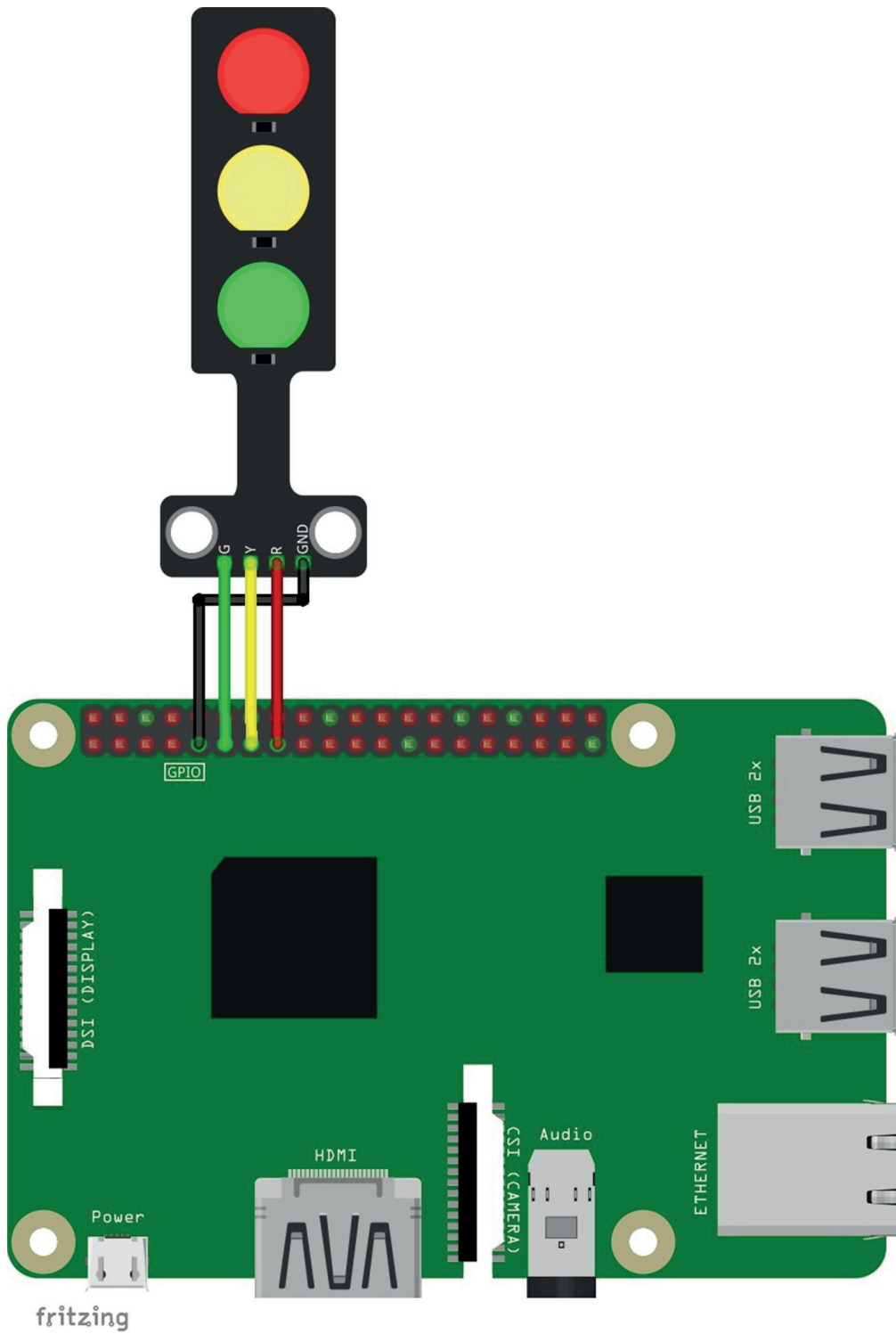
2. Module Pinout



3. Connection Diagram



Module Pin	Microcontroller Pin	Wire Color
G	D4	Green Wire
Y	D3	Yellow Wire
R	D2	Red Wire
GND	GND	Black Wire



Module Pin	Microcontroller Pin	Physical Pin	Wire Color
G	GPIO17	11	Green Wire
Y	GPIO27	13	Yellow Wire
R	GPIO22	15	Red Wire
GND	GND	9	Black Wire

AZ-Delivery

Ihr Experte für Mikroelektronik!

If you are looking for the high quality products for Arduino and Raspberry Pi, AZ-Delivery Vertriebs GmbH is the right company to get them from. You will be provided with numerous application examples, full installation guides, eBooks, libraries and assistance from our technical experts.