

### Features enclosure and pcb:

- milled cap rail enclosure (6 modules)
- for EN50022 DIN rails
- Pre assembled 5V/0.5A voltage regulator (Vin 9...30V DC)
- Slot for Feather style microcontroller board
- Slot for optional Feather wing
- Exclusive slot for optional W5500 based Ethernet module
- Integrated prototyping area (80mm x 25mm)
- 2x 3-pin terminal blocks for prototyping
- Marked and connected GPIO & power pins beside the proto area
- 1x 2-pin terminal block for power supply
- removable protections for terminals
- for Adafruit feather, Sparkfun ThingPlus and compatible boards

## Cap rail enclosure set for Feather boards

---

### Enclosure:

- Outside dimensions: 105mm x 90mm x 65,3mm (W x H x D)
- Breadboard area: 78mm x 25mm (W x H)
- Material: ABS
- Finish top shell: light grey
- Finish bottom shell: light grey

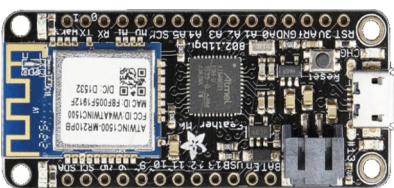
### Features voltage regulator:

- Input voltage: 9 – 30V DC
- Output voltage: 5V / 0.5A DC

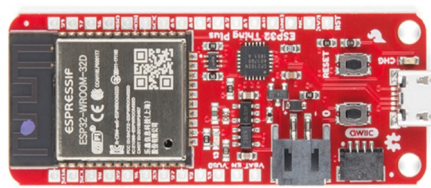
### Applications :

- Home automation
- Industrial control
- Door access and door control
- Temperature controls and heating systems
- Education
- Internet of Things (IoT)

### Compatibility :



Adafruit™ Feather boards



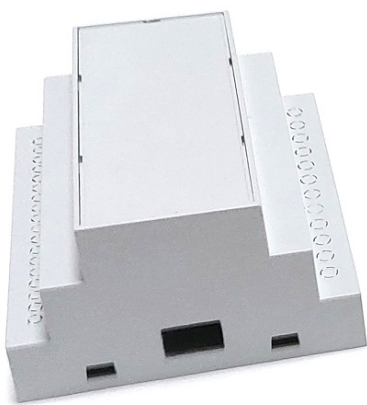
Sparkfun™ Thing Plus boards

## Cap rail enclosure set for Feather boards

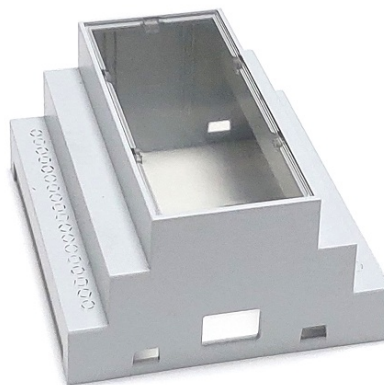
---

### Part number table:

Part-No.	Version	Features
ABXFHST	Standard	<b>transparent lid</b>
ABXFHSG	Standard	<b>grey lid</b>
ABXFHSO	Standard	<b>lid for OLED shield (milled)</b>
ETHMOD	Optional	W5500 based Ethernet module



Grey lid



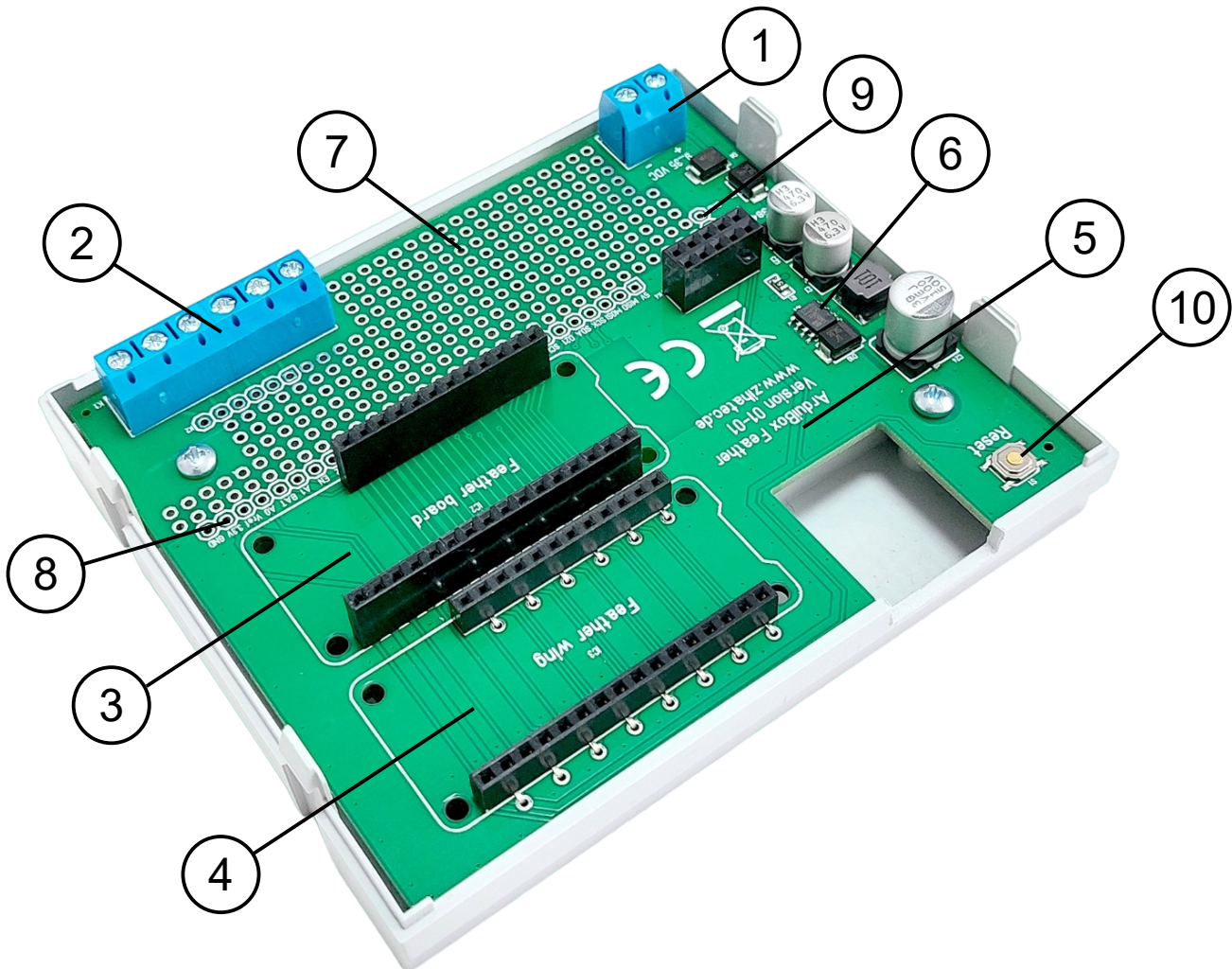
Transparent lid



Lid for OLED  
(transparent + milled)

## Cap rail enclosure set for Feather boards

### Features main board:



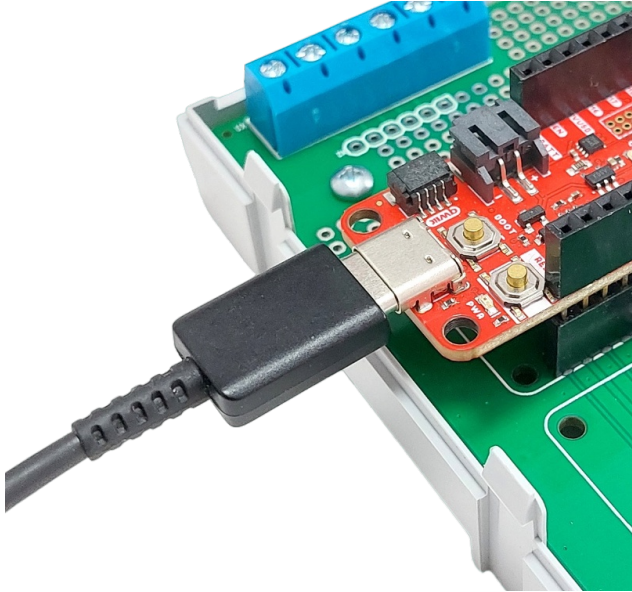
- ① Terminals power supply
- ② Terminals for proto board
- ③ Slot for Feather board
- ④ Slot for Feather wing
- ⑤ Slot for Ethernet module
- ⑥ voltage regulator (9..30V  $V_{in}$  / 5V  $V_{out}$ )
- ⑦ Breadboard / proto board area
- ⑧ GPIO pins for proto board
- ⑨ Power pins ( $V_{in}$ , GND) for proto board
- ⑩ Reset button

## Cap rail enclosure set for Feather boards

---

Different ways for power supply of ArduiBox Feather:

1.) Via the USB socket of the Feather



2.) Via the terminal K3 with 9-30V DC

