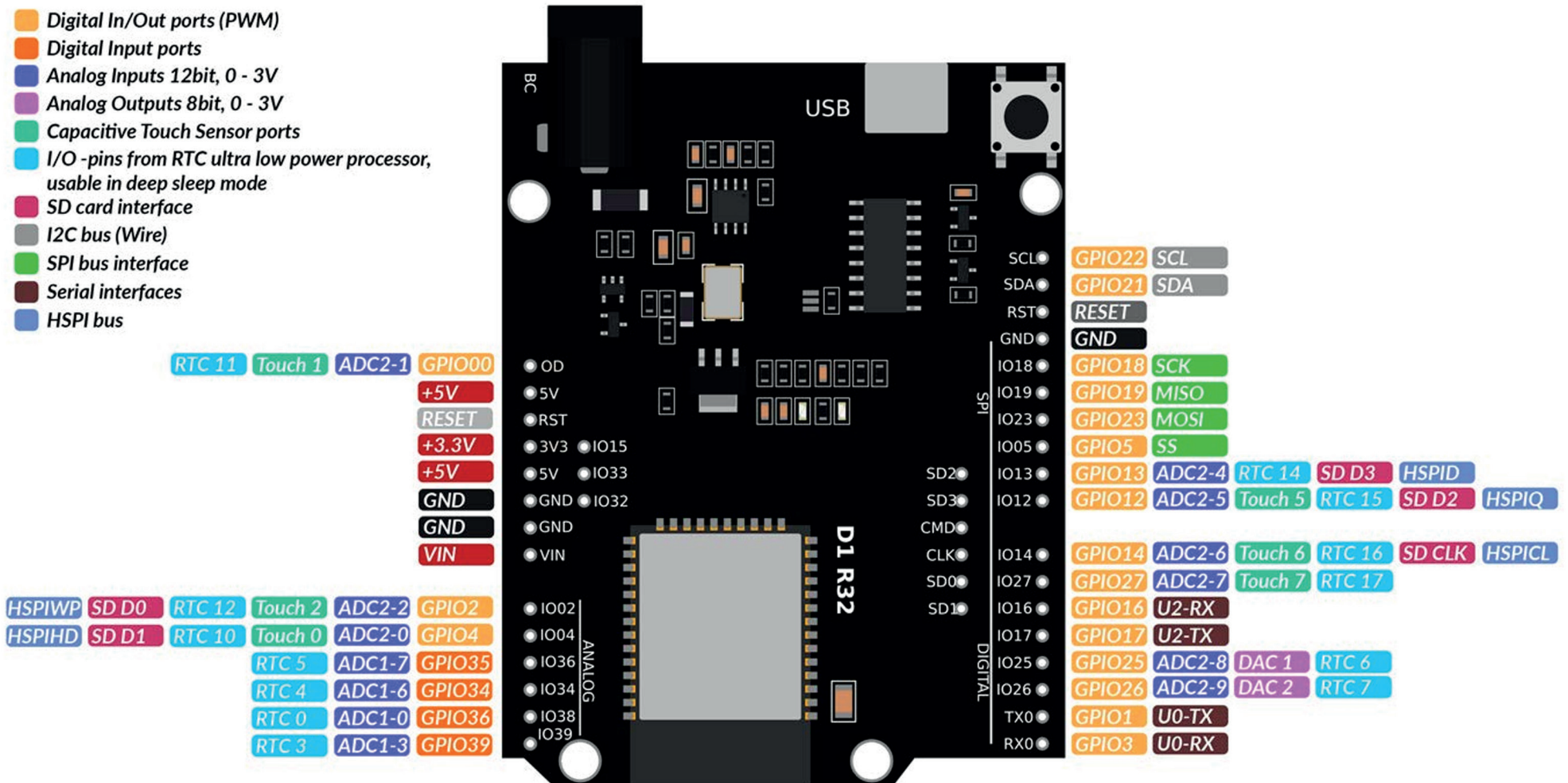


- Digital In/Out ports (PWM)
- Digital Input ports
- Analog Inputs 12bit, 0 - 3V
- Analog Outputs 8bit, 0 - 3V
- Capacitive Touch Sensor ports
- I/O -pins from RTC ultra low power processor, usable in deep sleep mode
- SD card interface
- I2C bus (Wire)
- SPI bus interface
- Serial interfaces
- HSPI bus



HSPICS SDCMD RTC 13 Touch 3 ADC2-3 GPIO15 IO15  
 RTC 8 Touch 8 ADC1-5 GPIO33 IO33  
 RTC 9 Touch 9 ADC1-4 GPIO32 IO32

SD2  
 SD3  
 CMD  
 CLK  
 SD0  
 SD1

Internal Flash Memory control pins.  
 Not for use!