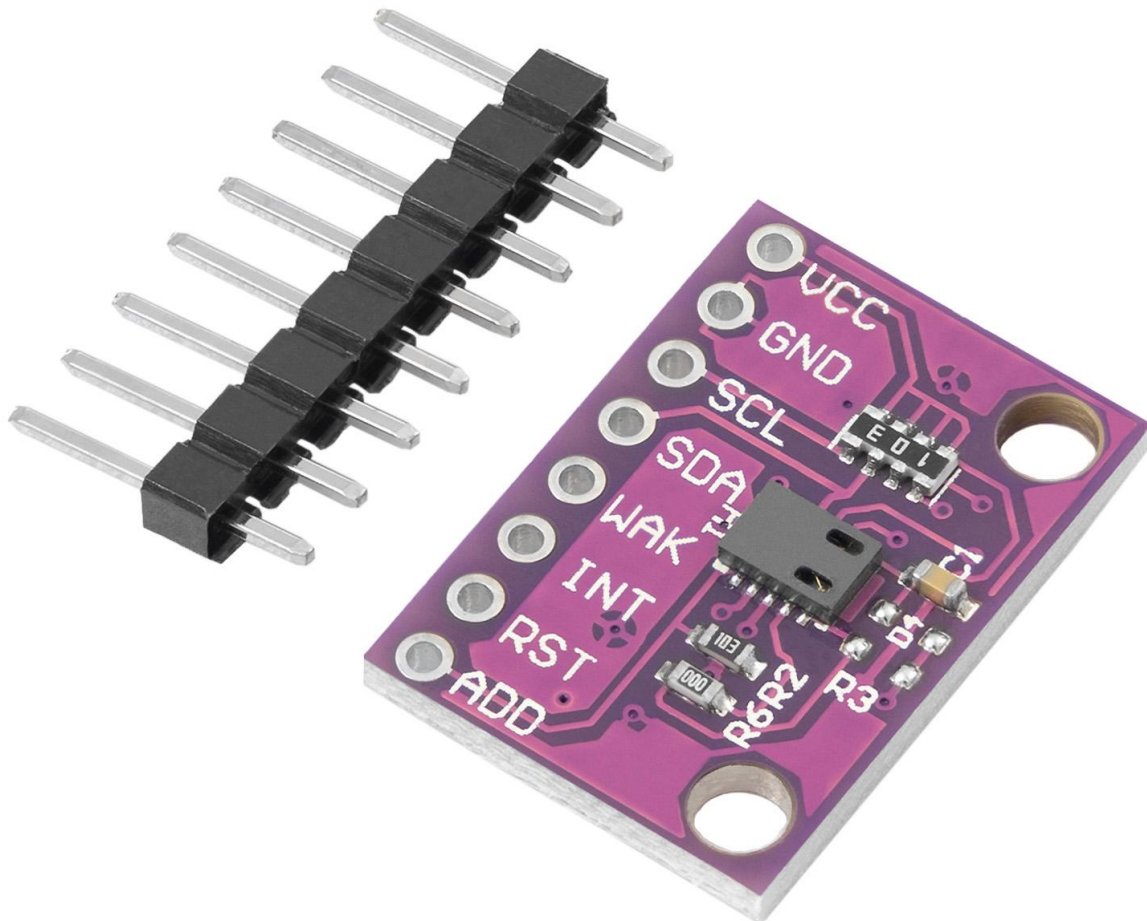


CCS811

datasheet

# CCS811 Sensor Module

eCO<sub>2</sub>-Sensor

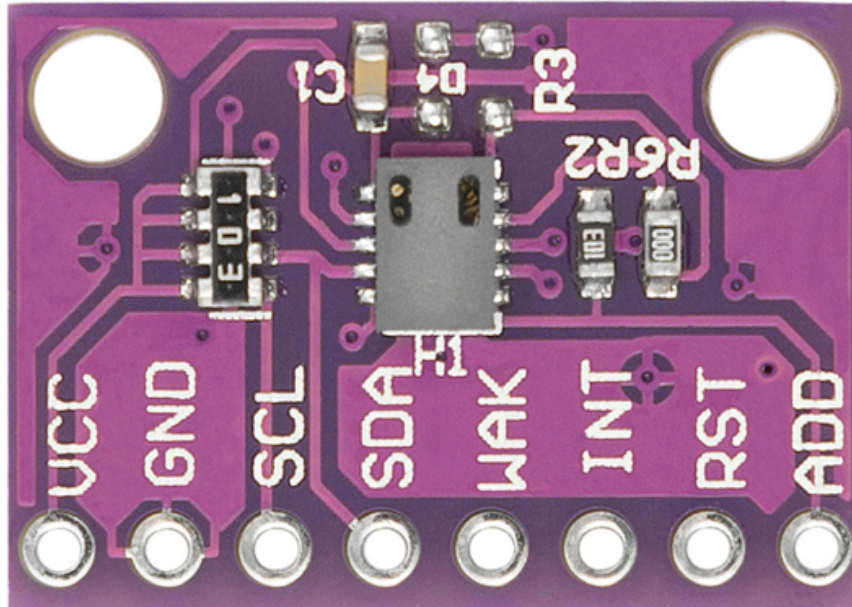


## Specifications

Operating Voltage	1.8 - 3.6V
Recommended Operating Voltage	3.3V
Power consumption	60mW
Interface	I <sup>2</sup> C
Supported I <sup>2</sup> C frequency	10 - 400 kHz
logic level	=Operating Voltage
equivalent CO <sub>2</sub> (eCO <sub>2</sub> )	400 - 8192 ppm
Dimensions	20 x 14 x 2.5 mm
Weight	ca. 1.4g

It's recommended that the sensor be operated for 48 hours when first delivered and then operate in the desired mode for 20 minutes each time the sensor is in use. The reason for this is that the sensitivity levels of the sensor change during the first use.

## Pinout



Pin	Definition
VCC	Power supply pin
GND	common ground for power and logic
SCL	I2C clock pin
SDA	I2C data pin
WAK	wakeup pin, pull LOW to enable communication with the sensor
INT	Interrupt Output pin, It is pulled low by the CCS811 to indicate end of measurement or a set threshold value has been triggered.
RST	Reset pin, pull LOW to perform reset
ADD	I2C address selection: Pull LOW for address 0x5A Pull HIGH for address 0x5B