

ArduiTouch Wandgehäuseset mit Touchscreen für ESP8266 und ESP32 Assembly Instruction



Tools:

**Ageregulated soldering iron
(25..40W) with small tip**



A wet sponge to clean the tip



Thin solder wire



Side cutting pliers



Needle nose pliers



Medium cross slot screwdriver



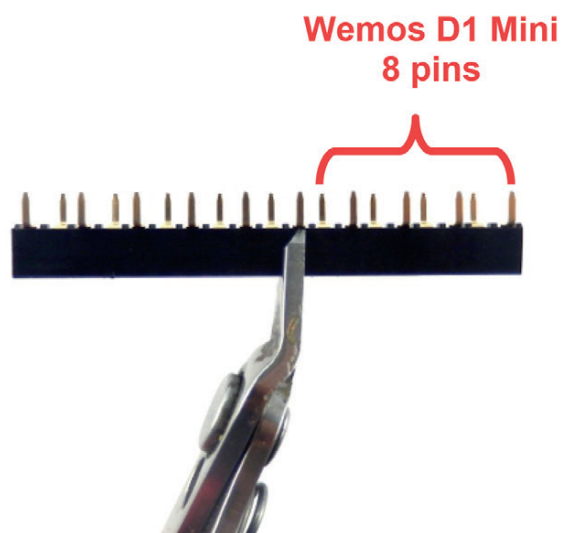
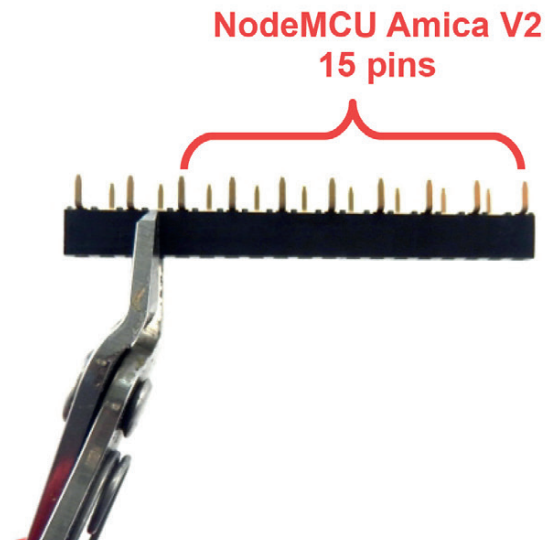
Part list:

 <p>1x 6pole terminal block (K4)</p>	 <p>1x 6pole terminal header (K4)</p>	 <p>1x 14pole female header (K3)</p>
 <p>2x 19pole centipede female header</p>	 <p>(brown, black, red)</p> <p>1x Resistor 1k (R1)</p>	 <p>(brown, black, orange)</p> <p>1x Resistor 10k (R14)</p>
 <p>1x Transistor BC547B (T2)</p>	 <p>1x Piezo Beeper (LS1)</p>	 <p>1x voltage regulator TL2576-5 (IC4)</p>

 <p>1x inductor 100uH/1.2A (L1)</p>	 <p>2x Schottky diode SB260 (D10, D12)</p>	 <p>1x overvoltage limiting diode P6KE36CA (D11)</p>
 <p>1x electrolytic capacitor 1000uF/16V (C2)</p>	 <p>1x electrolytic capacitor 100uF/63V (C1)</p>	 <p>8x Screw M3 6mm</p>
 <p>4x Spacer M3 11mm</p>		

1. Preparation of the female centipede headers

Depending from the ESP module of your choice you have to cut the both female centipede headers to the right length:

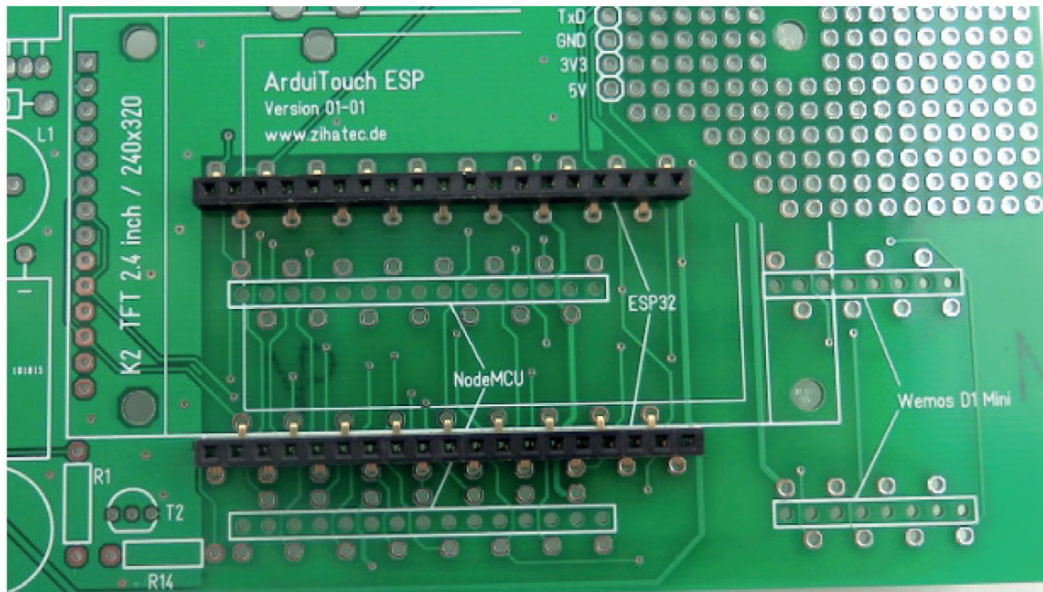


For the NodeMCU ESP32 module no cutting is needed.

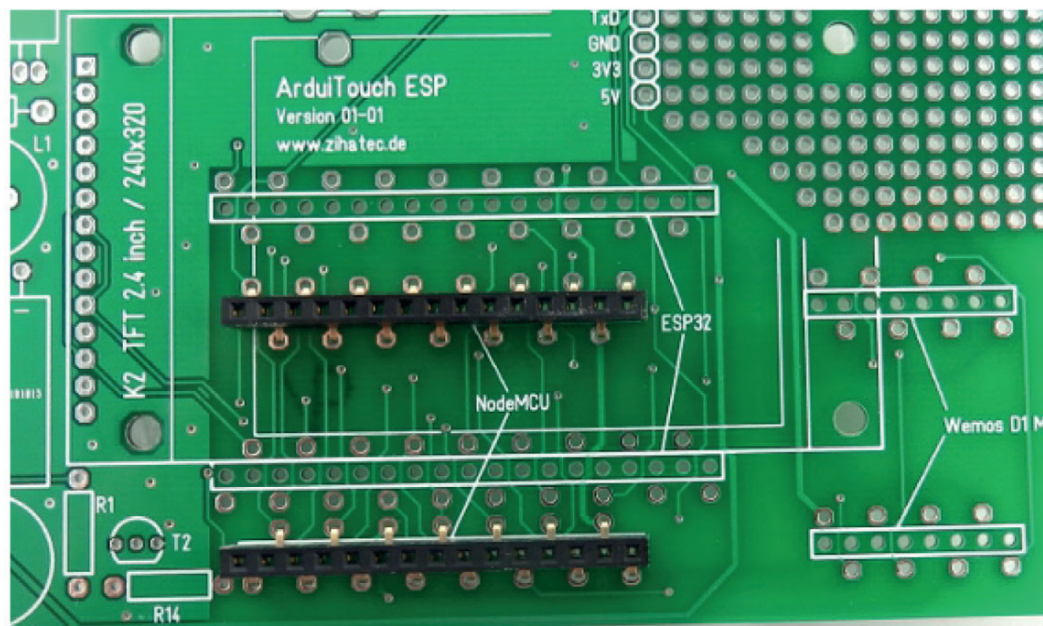
2. Place and solder the centipede headers

Depending from the ESP module of your choice you have to place the prepared female centipede headers to the right position on the pcb:

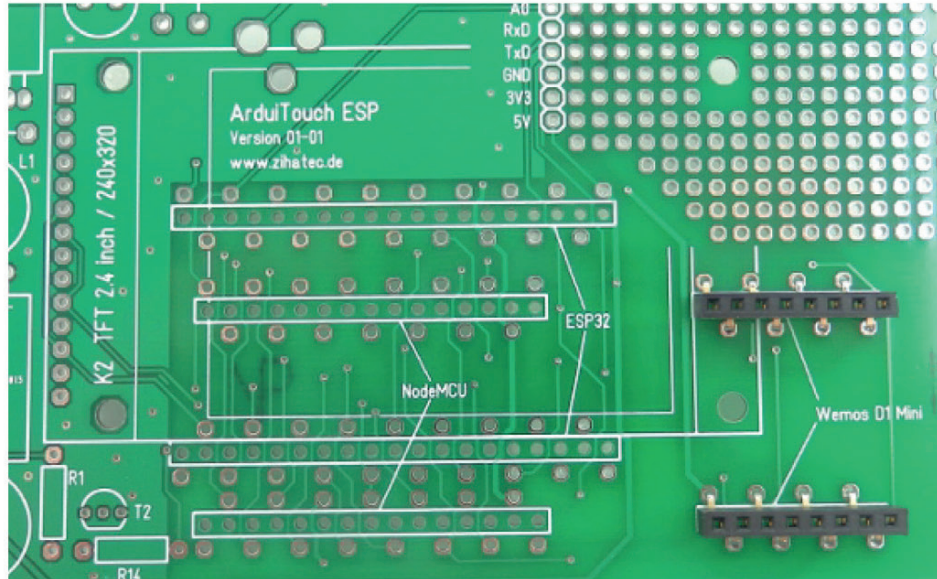
NodeMCU ESP32:



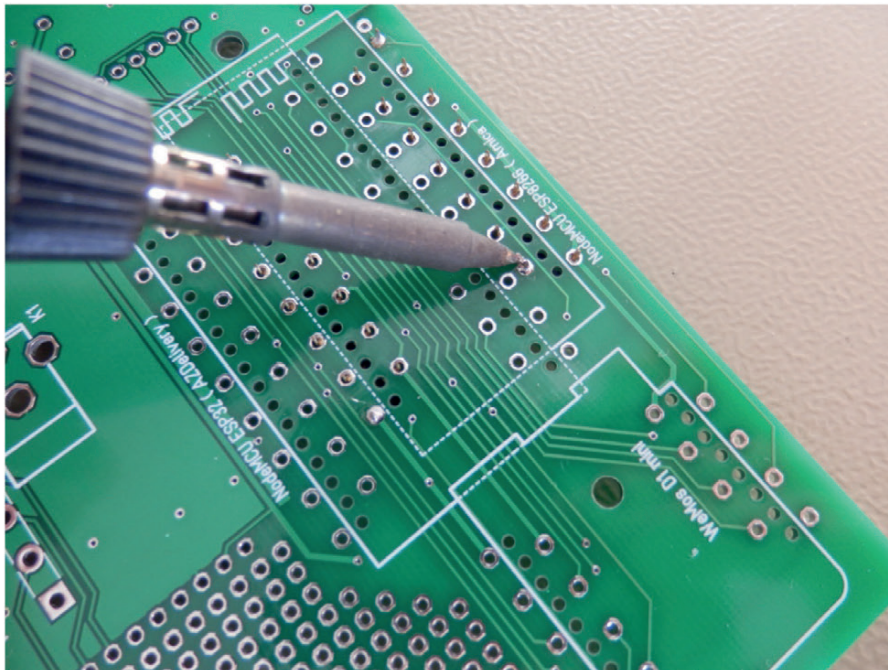
NodeMCU Amica V2:



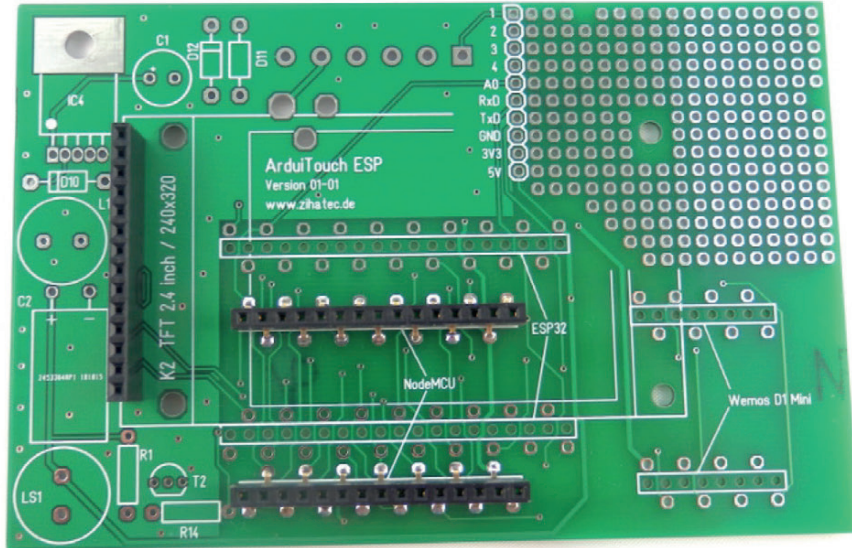
Wemos D1 Mini:



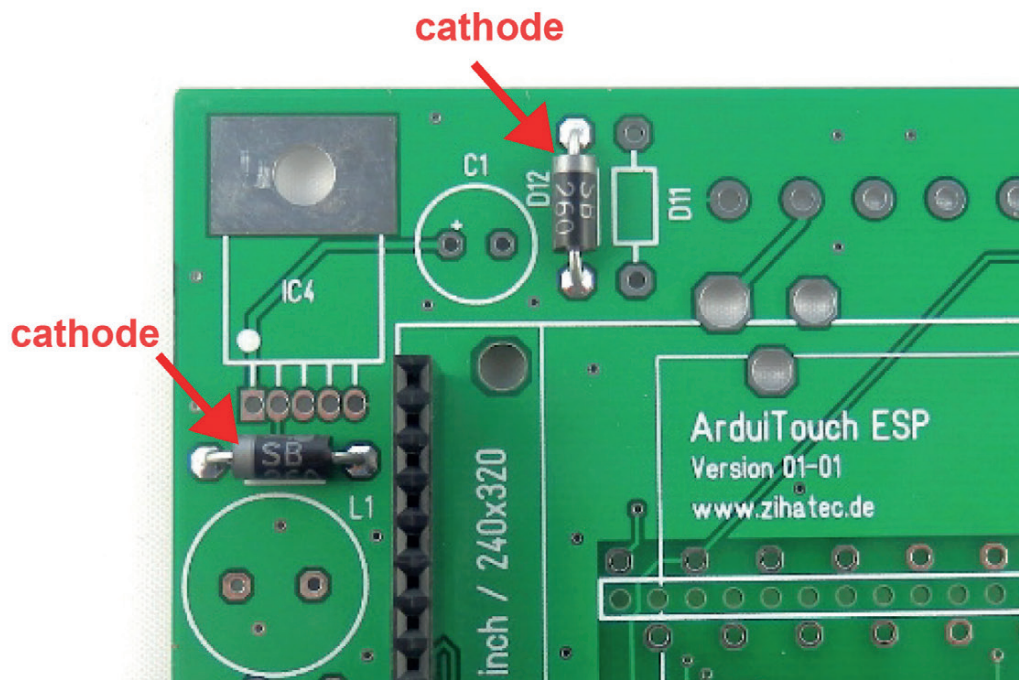
Now you can solder the centipede headers from the opposite side. Please take care that the headers placed tight as possible to the pcb:



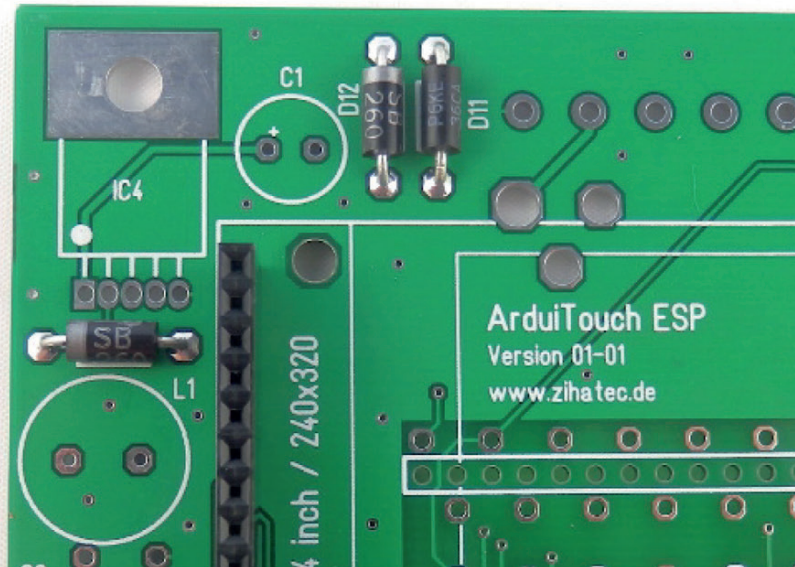
3. Place and solder the header K1



4. Place and solder the schottky diodes D10 & D12

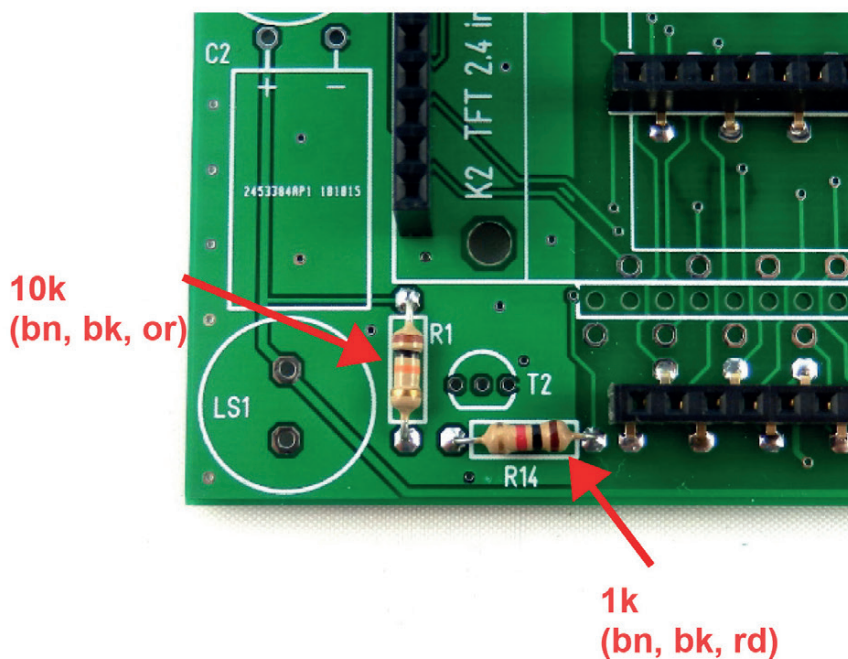


5. Place and solder the diode D11



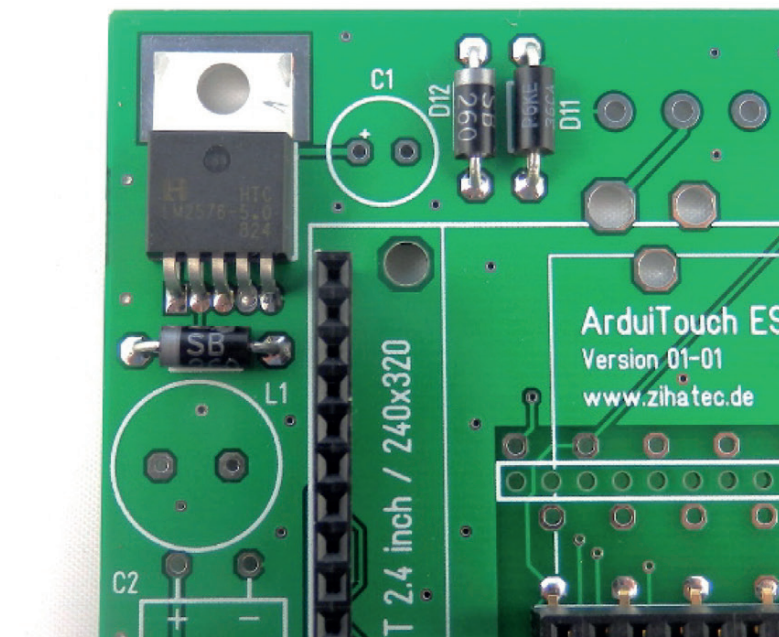
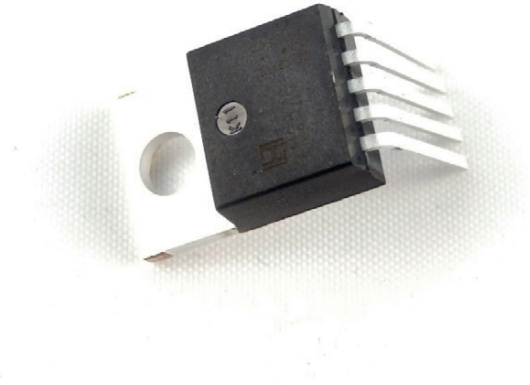
Please Note: D11 has no polarity!

6. Place and solder the resistors R1 and R14

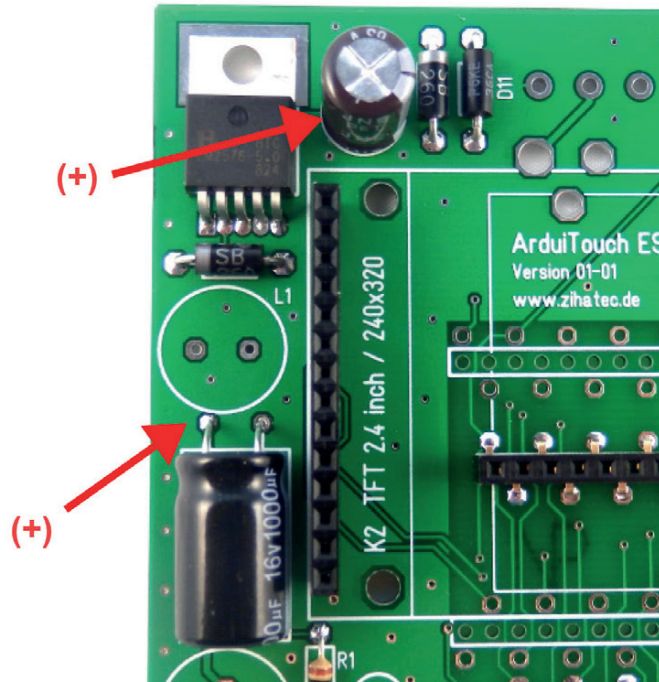


7. Preparation and Assembly of IC4

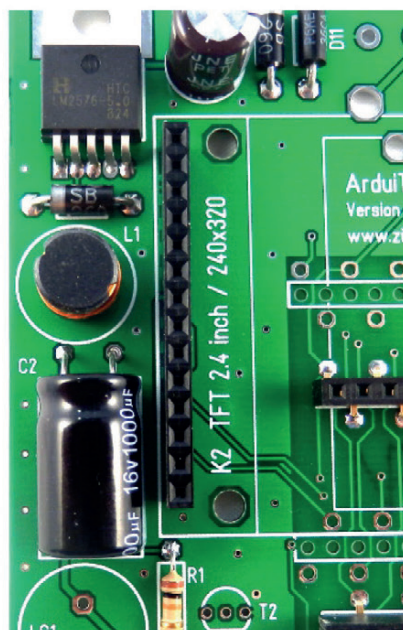
Bend the straight pins of the voltage regulator IC4 2mm beside the regulator in a 90 degree angle first:



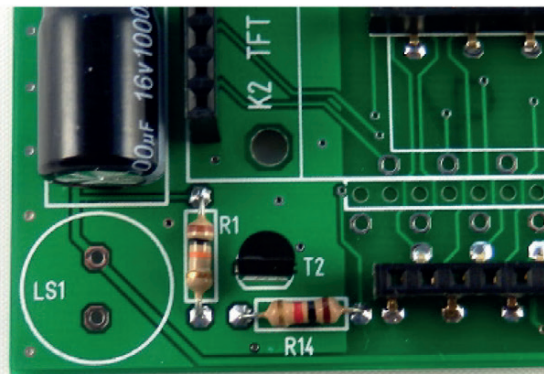
8. Place and solder the capacitors C1 and C2



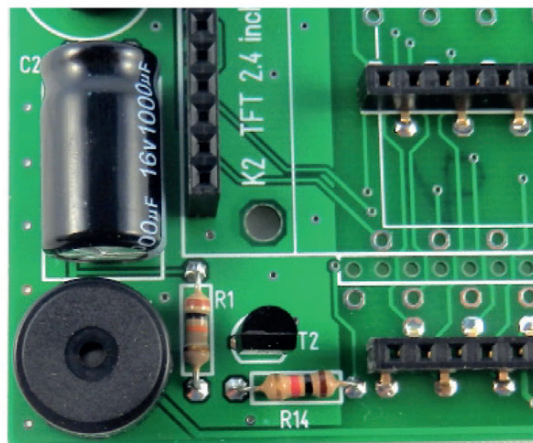
9. Place and solder the inductor L1



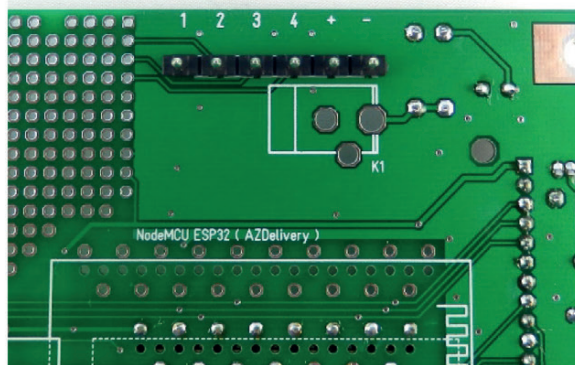
10. Place and solder the transistor T2



11. Place and solder the piezo loudspeaker LS1



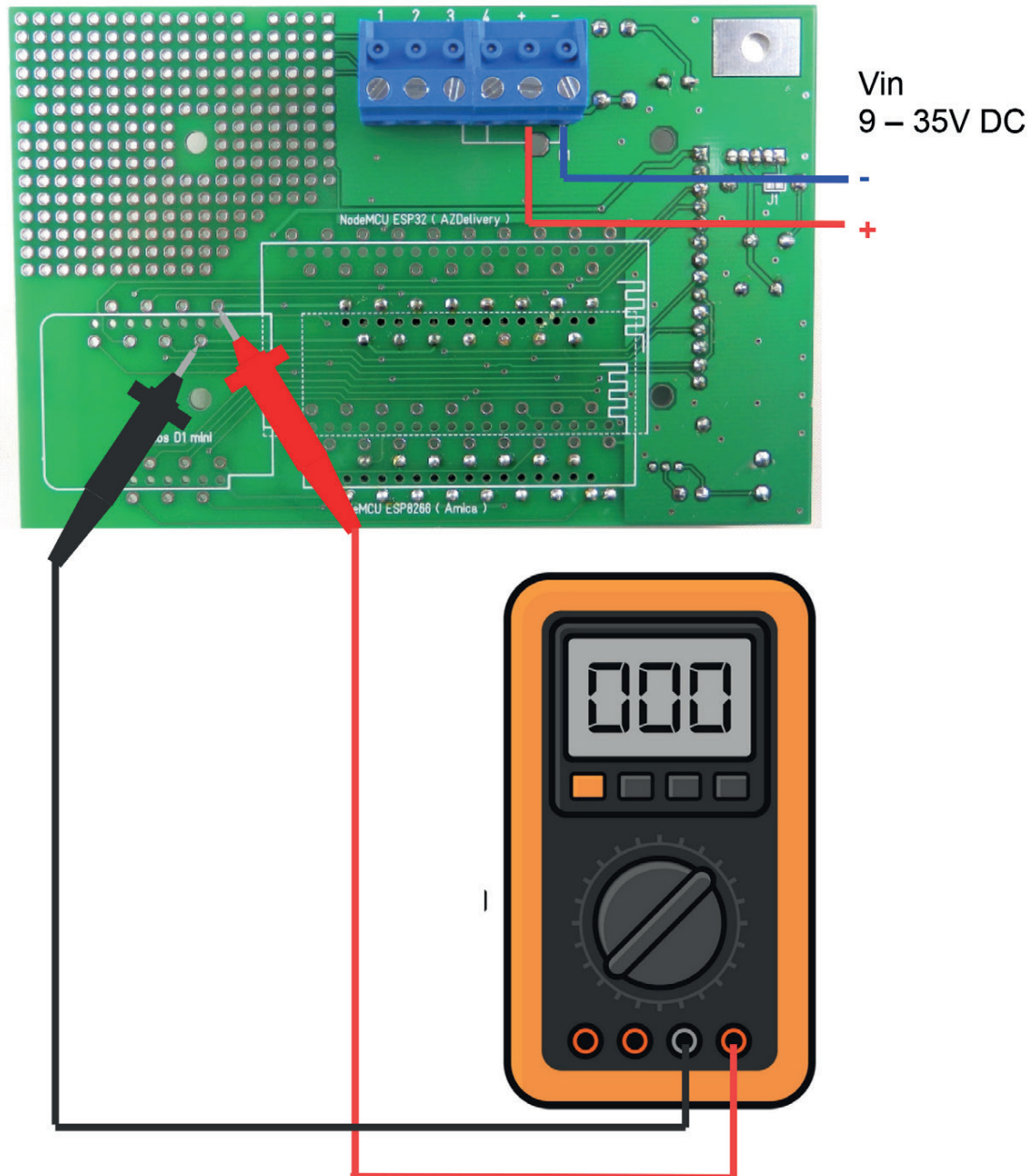
12. Place and solder the header K4



Attention!
K14 is placed on
the pcb backside

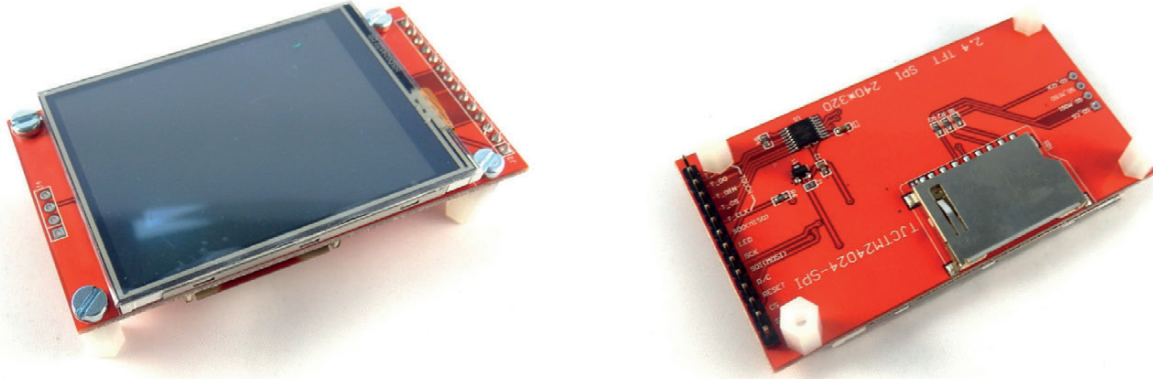
13. Check the power supply

Its time to check the function of the power supply before the final assembly of the unit.



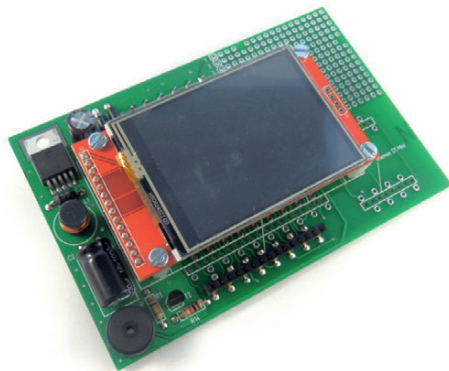
You have to measure a voltage between 4.9 – 5.1V!

14. Mounting of Spacers

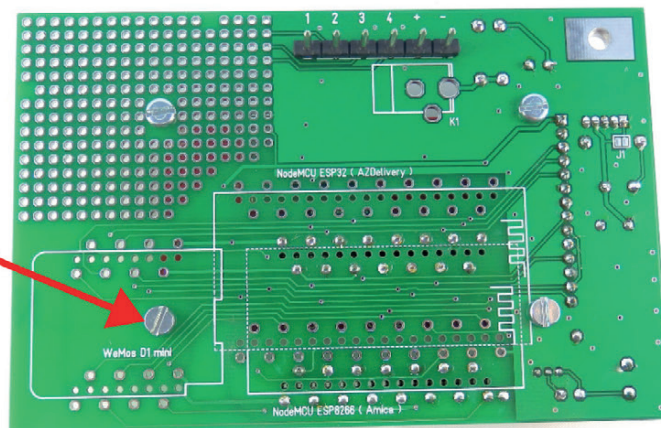


15. Mounting of Touchscreen

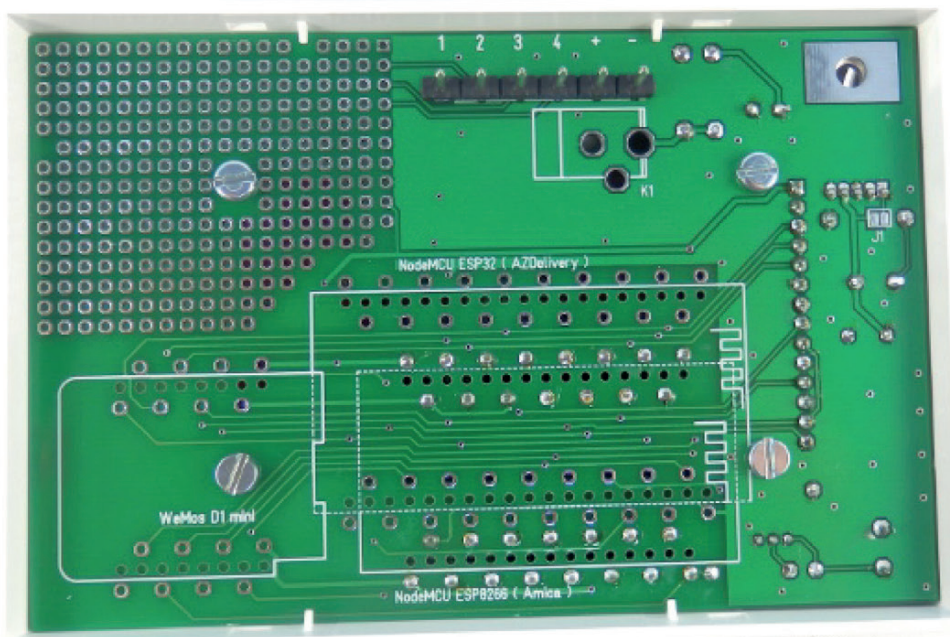
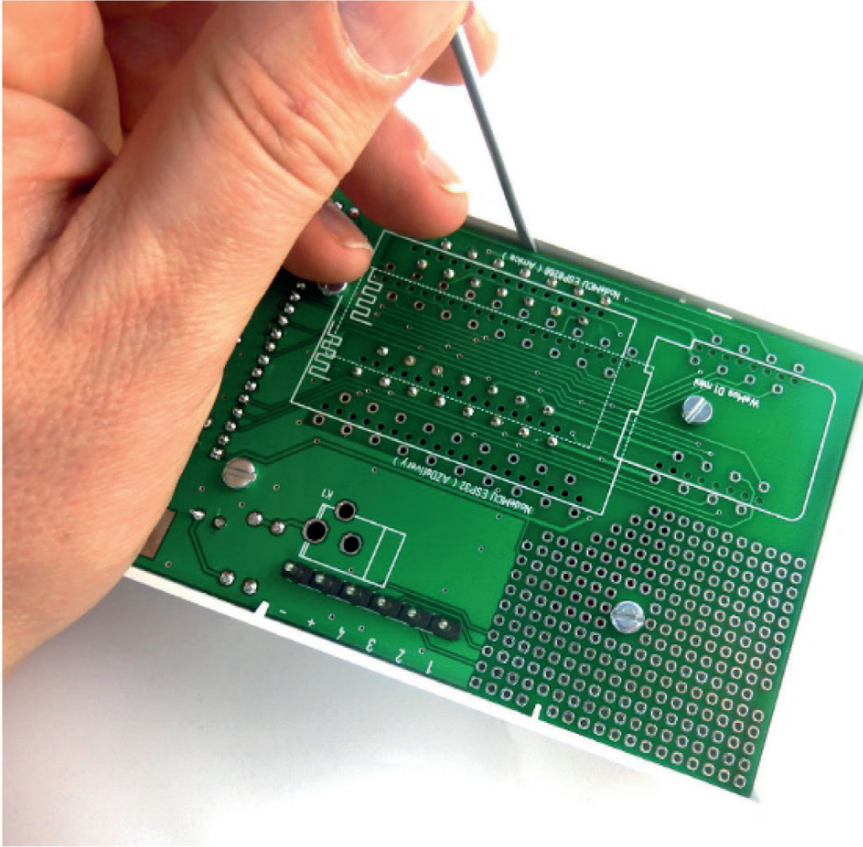
Plug the touchscreen into K2 and fix it with 4 M3 screws on the pcb backside.



**Don't mount this
screw if you want to
use a
Wemos D1 Mini!**

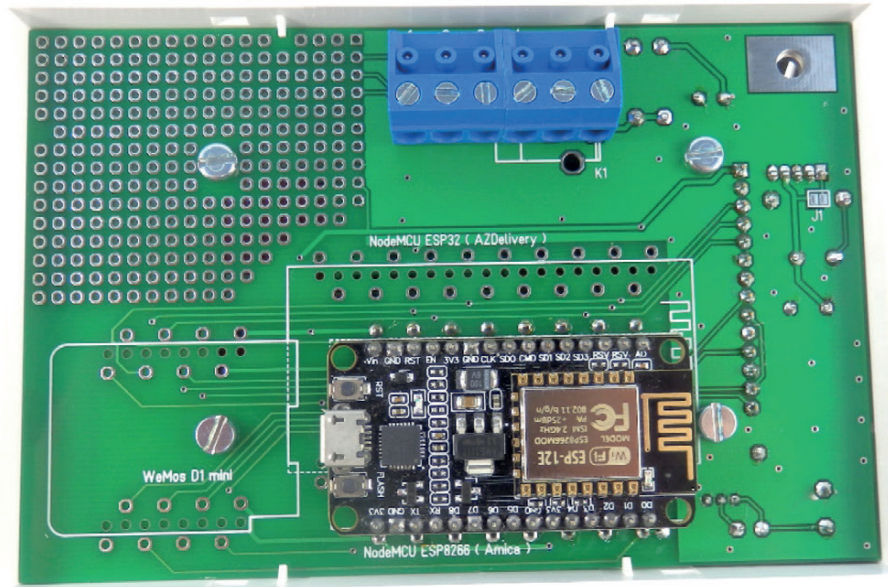


16. Mounting of pcb in the top shell



**Position of
ventilation slots
on this side!**

17. Mounting of ESP module and terminal



Finish!

Appendix – circuit diagram

