

Adapter für NRF24L01 Datenblatt



Content:

[1. Specifications](#)

[2. Pinout](#)

[3. Connection Diagram](#)

1. Specifications

Input Voltage Range	from 5V to 12V
Regulated Output Voltage	3.3V
Output Current	12.3mA
Operating Temperature	from -40 to +125°C
Power Indicator	Onboard LED
Connectors	8 pins (2x4 female header), 6 pins male
Dimensions	26mm x 19mm x 12mm [1in x 0.7in x 0.4in]

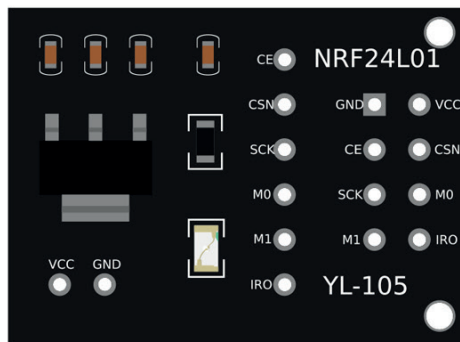
The adapter has an integrated AMS1117 voltage regulator which regulates the input voltages from 4.8V-12VDC to 3.3V which is a default power supply voltage for NRF24L01+ module.

When connecting adapter to the Microcontroller Compatible with Arduino, the power supply voltage can be taken from the 5V pin.

Do not connect the 5V directly to the nRF24L01+ because it is not a 5V tolerant device and it may be damaged!

2. Pinout

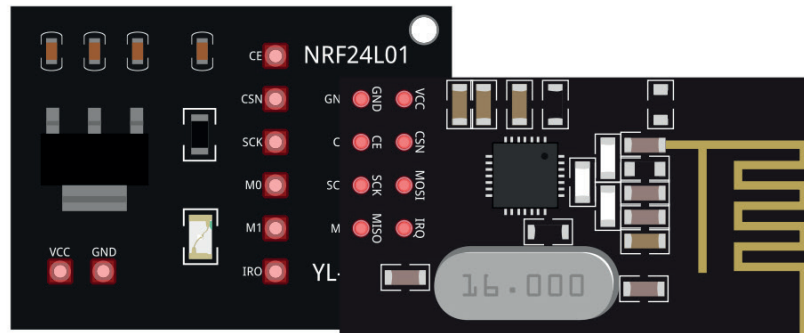
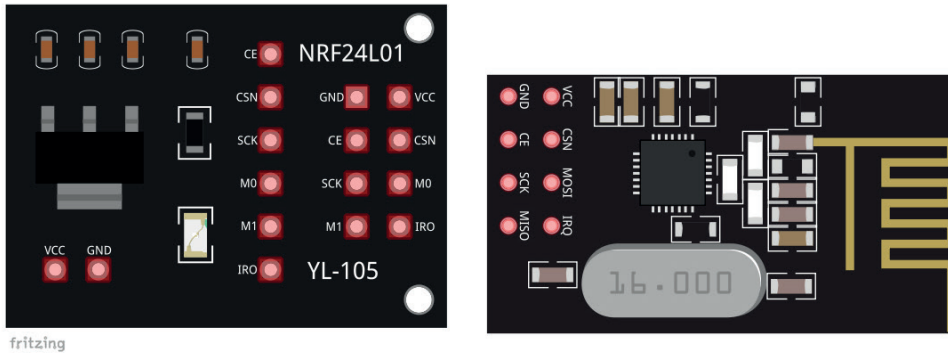
- Chip Enable pin **CE** ○
- SPI Chip Select pin **CSN** ○
- SPI Clock pin **SCK** ○
- SPI Slave Data Input pin **MOSI** ○
- SPI Slave Data Output pin **MISO** ○
- Active Low Interrupt pin **IRQ** ○



- Power Supply pin 5V **VCC**
- Ground **GND**

- Ground **GND** □ ○ **VCC** Power Supply pin 3.3V
- Chip Enable pin **CE** ○ ○ **CSN** SPI Chip Select pin
- SPI Clock pin **SCK** ○ ○ **MOSI** SPI Slave Data Input pin
- SPI Slave Data Output pin **MISO** ○ ○ **IRQ** Active Low Interrupt pin

3. Connection Diagram



AZ-Delivery

Ihr Experte für Mikroelektronik!

If you are looking for the high quality products for Arduino and Raspberry Pi, AZ-Delivery Vertriebs GmbH is the right company to get them from. You will be provided with numerous application examples, full installation guides, eBooks, libraries and assistance from our technical experts.