

4x4 Matrix Array Keypad Datenblatt



Content:

- [1. Specifications](#)
- [2. Pinout](#)
- [3. Connection Diagram](#)

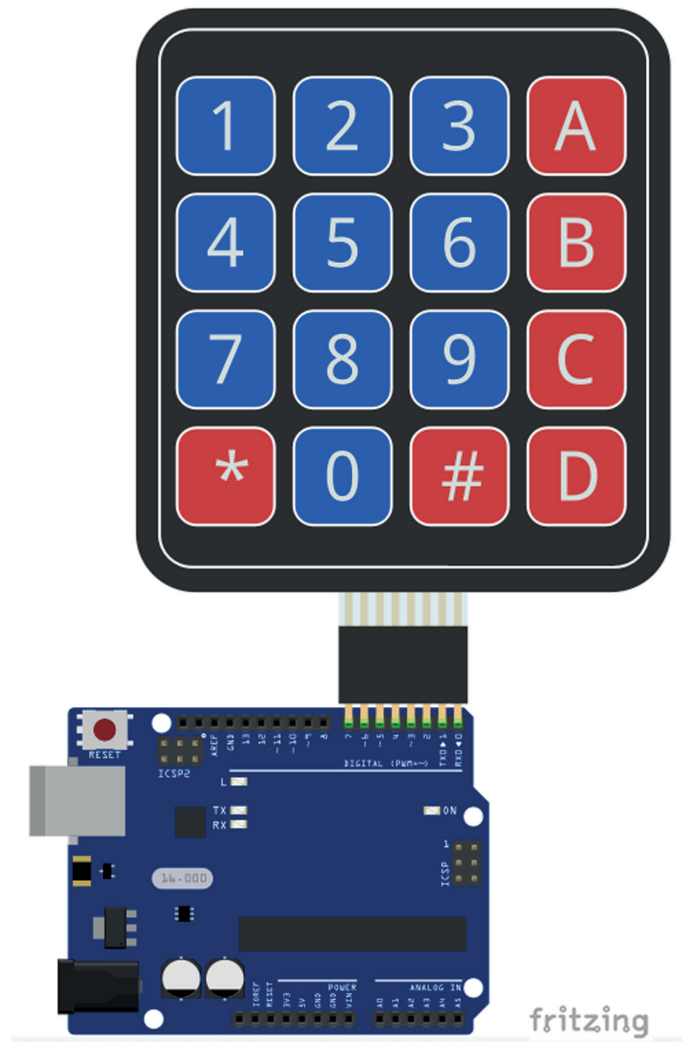
1. Specifications

Maximum operating Voltage	24V DC
Maximum operating Current	30mA
Operating Temperature	from 0°C to +50°C
Interface	8pin access to 4x4 matrix
Dimensions	76mm x 9mm x 1mm [3in x 2.7in x 0.5in]

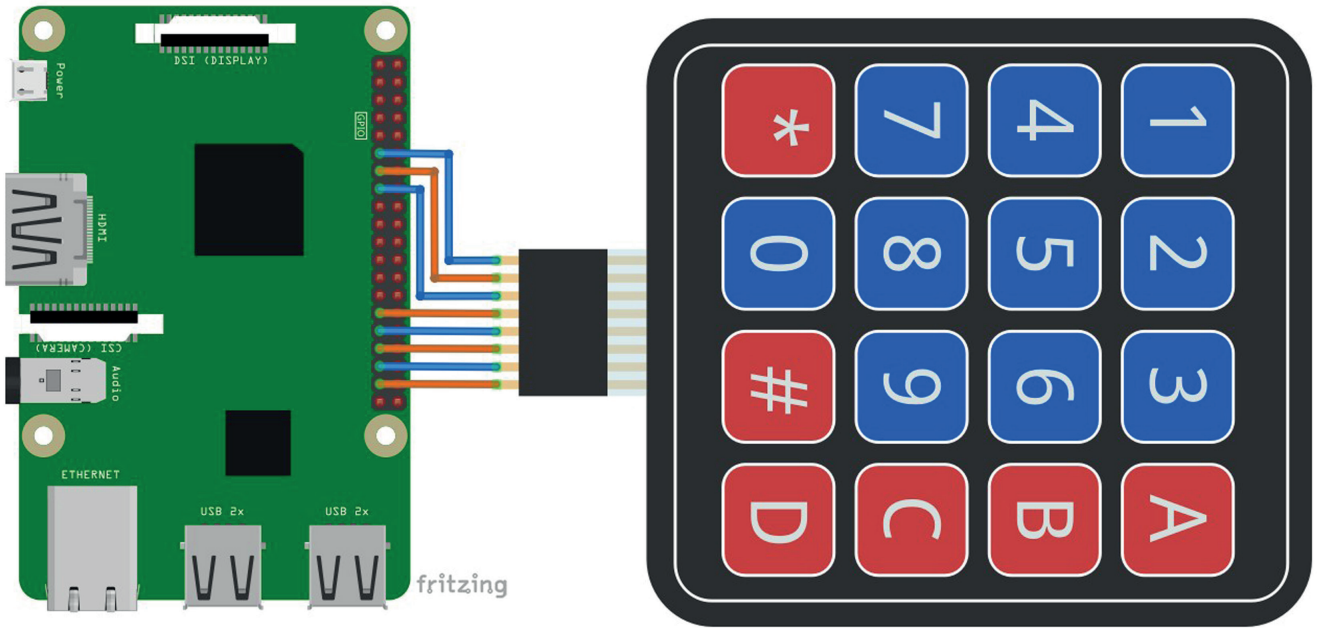
2. Pinout



3. Connection Diagram



Columns Keypad Pin	Microcontroller Pin	Rows Keypad Pin	Microcontroller Pin
C1	D3	R1	D7
C2	D2	R2	D6
C3	D1	R3	D5
C4	D0	R4	D4



Columns Keypad Pin	Microcontorller Pin	Physical Pin	Rows Keypad Pin	Microcontorller Pin	Physical Pin
C1	GPIO6	31	R1	GPIO17	11
C2	GPIO13	33	R2	GPIO27	13
C3	GPIO19	35	R3	GPIO22	15
C4	GPIO26	37	R4	GPIO5	19

AZ-Delivery

Ihr Experte für Mikroelektronik!

For top quality microelectronics, we are your go to. We provide an array of application examples, full installation guides, eBooks, libraries, and all-round assistance. AZ-Delivery, your microelectronics expert!