

## 4x4 Matrix Tastatur Keypad Datenblatt



## Content:

- [1. Specifications](#)
- [2. Pinout](#)
- [3. Connection Diagram](#)

## 1. Specifications

Maximum Operating Voltage	24V DC
Maximum Operating Current	20mA
Contact Resistance	max 200Ω
Operating Temperature	From -20°C to +65°C
Life Cycle	1 million Cycles per Key
Dimensions	68mm x 66mm x 10mm [2.7in x 2.6in x 0.4in]
Mounting Holes	61mm apart

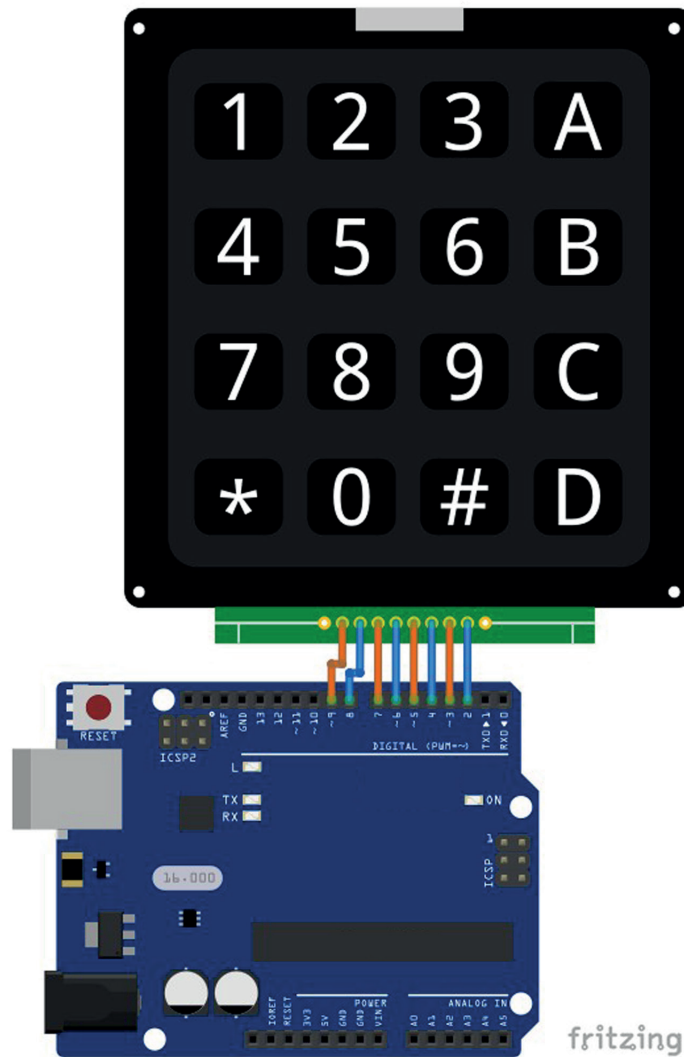
## 2. Pinout



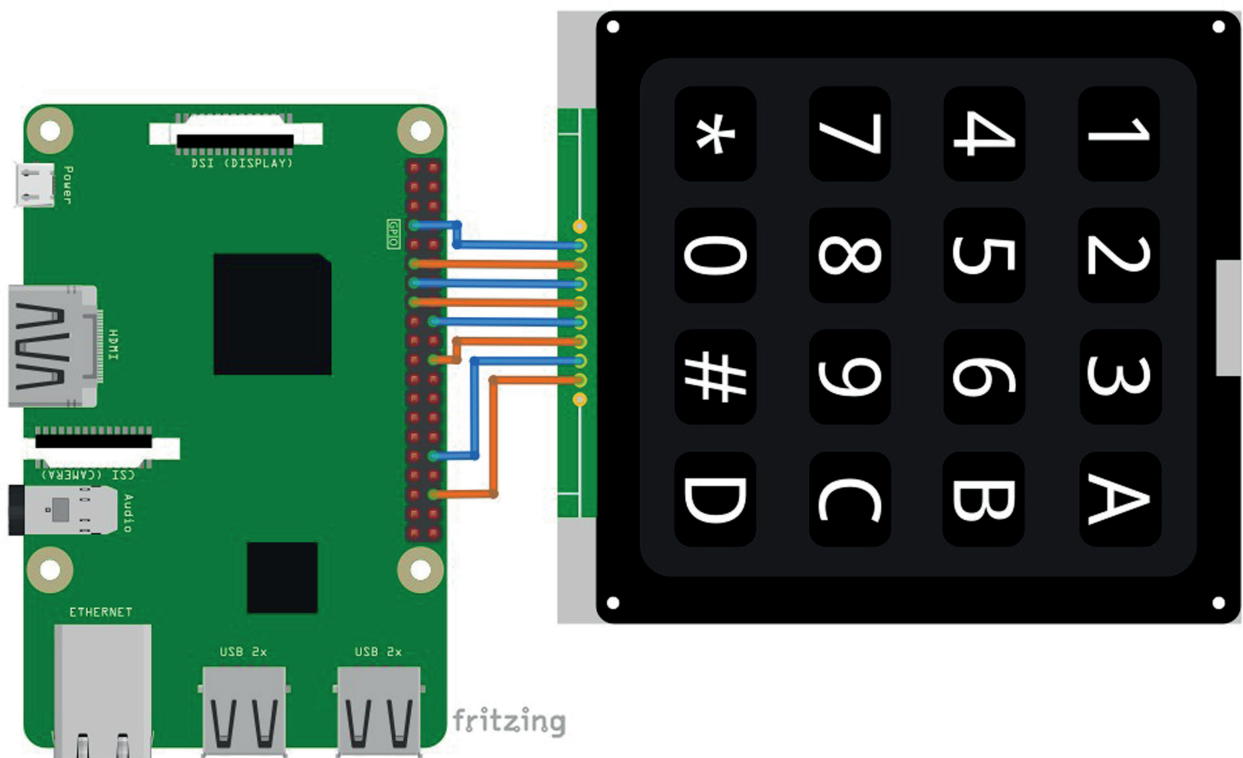
NC C1 C2 C3 C4 R1 R2 R3 R4 NC

NC - Not Connected  
C - Column  
R - Row

### 3. Connection Diagram



Columns Keypad Pin	Microcontroller Pin	Rows Keypad Pin	Microcontroller Pin
C1	D9	R1	D5
C2	D8	R2	D4
C3	D7	R3	D3
C4	D6	R4	D2



Columns Keypad Pin	Microcontorller Pin	Physical Pin	Rows Keypad Pin	Microcontorller Pin	Physical Pin
C1	GPIO4	7	R1	GPIO24	18
C2	GPIO17	11	R2	GPIO25	22
C3	GPIO27	13	R3	GPIO12	32
C4	GPIO22	15	R4	GPIO16	36

# AZ-Delivery

Ihr Experte für Mikroelektronik!

**For top quality microelectronics, we are your go to. We provide an array of application examples, full installation guides, eBooks, libraries, and all-round assistance. AZ-Delivery, your microelectronics expert!**