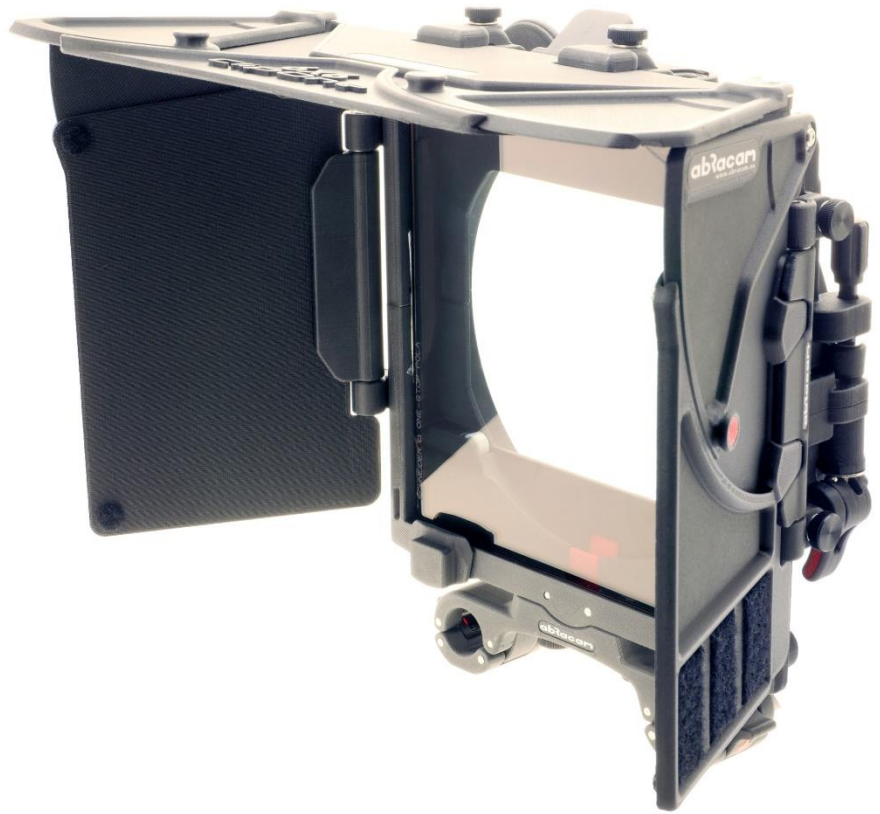


ClipOne 3F6x6 evo7

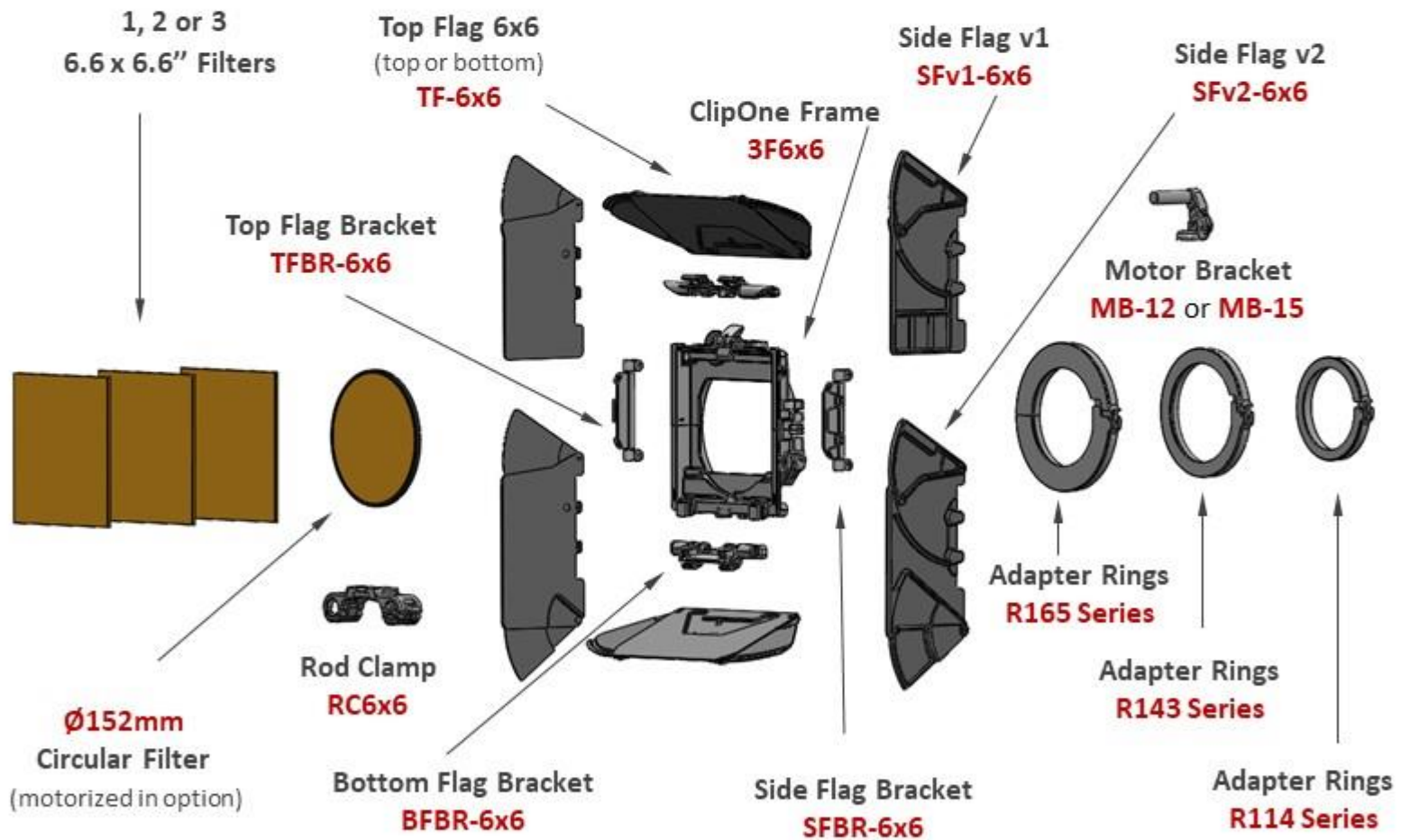


Ultralight Filter Holder
Up to 4 filters in an instant !

6.6 x 6.6" filters compatible

3 Years
Warranty

100% Carbon Composite



The ClipOne 6x6 evo7 is 100% Carbon Composite 3D printed
This product is reliable, as it is made with industrial professional tools
It is a new functional design in the 3D printing world

ClipOne 3F6x6 evo7

Sale options

Filter Holder ClipOne Frame

3F6x6

(230gr, 0.5oz)

595 €



3F6x6 kit1

Including

3F6x6 & TF-6x6 kit

(355gr, 12.5oz)

755 €



3F6x6 kit2

Including

3F6x6 & TF-6x6 kit & SFv1-6x6 kit

(497gr, 17.6oz)

1035 €



3F6x6 kit3

Including

3F6x6 & TF-6x6 kit & SFv1-6x6 kit & RC6x6

(559gr, 19.7oz)

1130 €



3F6x6 kit4

Including

3F6x6 & TF-6x6 kit & SFv2-6x6 kit & RC6x6 & BF-6x6 kit

(700gr, 24.7oz)

1360 €



ClipOne 3F6x6 **evo7**

Features

Filter Lever

To maintain and quickly release

1, 2 or 3
6.6 x 6.6" filters

Filter Ejection Piston (x2)

If the Filter Lever is **quickly** pressed down:
It gives a smooth and safe spring-impulsion
and allows to help remove filters easily
in reception in one hand.

If the Filter Lever is **slowly** pressed down:
The ejection is not significant, as usual

Sliding Drawer (x2)

Both in closed position:
Allow to insert 1 or 2
6.6 x 6.6" filters.

Both in open position:
Allow to insert a 3rd 6.6 x 6.6" filter
or to tilt one or two 6.6 x 6.6" filters

Magnetic fastener (x2)

To fit with the Bottom Flag Bracket
BFBR-6x6

NEW

Lens Clamp Screw

Pre-setting of the Lens Clamp tightening
To adjust when the Quick Release Lever
is on "closed" position

Quick Release Red Lever

2 positions: Open / Close

Clamps ON and OFF the lens instantly
without
touching the clamping pre-setting

3/8 Insert

To mount the Motor Bracket
MB12 or MB15

M4 Insert * (x2)

To mount the Top Flag Bracket
TFBR-6x6

M4 Insert * (x4)

To mount the Side Flags Bracket
SFBR-6x6 (x2)

M4 Insert * (x1)

To mount the Rod Clamp
RC6x6

Ejection Red Button

To take out the circular filter easily
without any risk of touching
the optical glass

Wheel with rubber & Gear 0.8

To adjust easily the rotation of
the $\varnothing 152\text{mm}$ circular filter

Manually or motorized
NEW

Two ball bearings

For a smooth rotation of
the $\varnothing 152\text{mm}$ circular filter

Clamp-On
R165 Series

*M4 inserts are warranted only if their specific Abracam accessories are used.

ClipOne 3F6x6 **evo7**

Lens Adapter Rings



Adapter Ring **R165-143C**

R165-143C (Specially compatible with R143 Series)
R143-114C (Specially compatible with R114 Series)
R114-95

Standard R165 Series, references:

R165-162, 156, 154, 152, 150, 142, 140..

Standard R143 Series, references:

R143-138, 136, 134, 132, 130, 125, 120, 113..

Standard R114 Series, references:

R114-110, 104, 100, 95, 87, 85, 80..

(Other sizes on request)



3F6x6

Shown with the special Adapter Ring

R165-143C

(Ring in captive position)



3F6x6

Shown with 3 Adapter Rings

R165-143C & R143-114C & R114-95

(Both Rings in captive position)

ClipOne 3F6x6 **evo7**

Top & Bottom Flag Brackets



Top Flag Bracket

TFBR-6x6

(57gr, 2oz)



3F6x6

Shown with the Top Flag Bracket

TFBR-6x6

(No tool needed)



Side Flag Bracket

SFBR-6x6

(29gr, 1oz)



3F6x6

Shown with the Top, Side & Bottom Flag Brackets

TFBR-6x6 & SFBR-6x6 & BFBR-6x6

(No tool needed)

Bottom Flag Bracket

BFBR-6x6

(50gr, 1.8oz)



ClipOne 3F6x6 **evo7**

Top & Bottom Flags



Top or bottom Flag

TF-6x6

(66gr, 2.3oz)



ClipOne 3F6x6 **evo7**

Side Flags

Side Flag v1

SFv1-6x6

(86gr, 3oz)



Side Flag v2

SFv2-6x6

(112gr, 4oz)



ClipOne 3F6x6 **evo7**

Flags ergonomics



v1 Flags ergonomics



(Bottom Flag kit removed)



v2 Flags ergonomics



ClipOne 3F6x6 **evo7**

Motor Clamp



Motor Bracket

MB12

Motors: Dji, RT Motion...
(30gr, 1oz)



Motor Bracket

MB15

Motors: Heden, Arri, Cmotion...
(30gr, 1oz)



3F6x6

Shown with the Motor Bracket
MB12



3F6x6

Shown with the Motor Bracket
MB15 & M26VE Heden motor

ClipOne 3F6x6 **evo7**

Rod Clamp



Rod Clamp

RC6x6

Bridge 19 x 104 / 120mm

(60gr, 2.1oz)



3F6x6

Shown with the Rod Clamp

RC6x6

(No tool needed)

ClipOne 3F6x6 **evo7**

Filter adapters



FA

Filter Adapter from
6.6 x 6.6" to 4 x 5.65"
(42gr, 1.5oz)

(Designed for the ClipOne 3F6x6)



CFA

Circular Filter Adapter from
diameters 152 to 138 mm
(15gr, 0.5oz)

(Designed for the ClipOne 3F6x6)