

Scale Weighing Guide



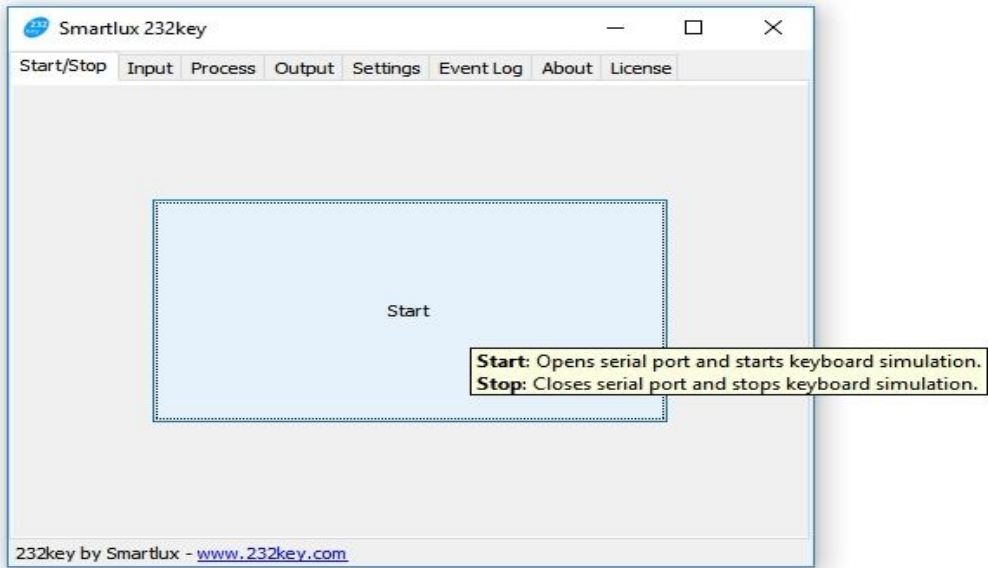
IMPORTANT: Before using the scale, you must first install and setup the wedge data application (see wedge data application guide for help) onto the computer you will be connecting the scale to.

When you receive your scale, you should have two boxes: one with the scale and one with the USB cable to connect the scale to your computer. Unpack the scale and follow the included scale user manual to install the steel platform. You can use the included AC adapter or 4 AA batteries for power. We recommend batteries for easy mobile use. Once you have the scale powered up, change the unit of measure to the ounces only setting (not pounds and ounces).

How to weigh

- 1) Connect the scale to your laptop or computer with the included USB cable.
- 2) Launch the 232key wedge data application.

3) From the start screen click the start button (when you are finished weighing click stop).



4) Open the Bar Cop inventory program and go to the inventory section and select the first bottle weight column. You should have your products arranged in the exact order that they are placed in speed wells and shelves to make weighing inventory fast.

The screenshot displays the 'Bar Cop' inventory management software. The interface includes a top navigation bar with 'Add' and 'Delete' buttons, a settings gear icon, and tabs for 'Stockroom', 'Main Bar', and 'Patio Bar'. A left sidebar contains a navigation menu with categories like 'Dashboard', 'Products', 'Inventory', 'Liquor', 'Wine', 'Bottle Beer', 'Draft Beer', 'Non-Alcohol', 'Food', 'Enter Purchases', 'Enter Adjustments', 'Analytical Reports', 'Profit and Loss', 'Shift Checks', and 'Ordering'. The main area is a table with columns: 'Liquor Products', 'Full Bottles', 'Point Counts', 'Bottle Weights', 'Product Notes', and 'Total On-Hand'. The 'Bottle Weights' column is highlighted with a green border. The table lists 20 items, including Absolut, Bacardi, Beefeater, Crown Royal, Jameson, Jagermeister, Absolut Citron, Bailey's Irish Cream, Blue Caracao, Captain Morgan, Cuervo Gold, Cuervo Silver, Dewars, Kahlua, Johnnie Walker Black, Fireball, and Jack Daniels, all with a 'Total On-Hand' value of 0.00.

Liquor Products	Full Bottles	Point Counts	Bottle Weights	Product Notes	Total On-Hand
1 Absolut					0.00
2 Bacardi					0.00
3 Beefeater					0.00
4 Crown Royal					0.00
5 Beefeater					0.00
6 Jameson					0.00
7 Jagermeister					0.00
8 Absolut Citron					0.00
9 Bailey's Irish Cream					0.00
10 Blue Caracao					0.00
11 Captain Morgan					0.00
12 Cuervo Gold					0.00
13 Cuervo Silver					0.00
14 Dewars					0.00
15 Kahlua					0.00
16 Johnnie Walker Black					0.00
17 Fireball					0.00
18 Jack Daniels					0.00
19					
20					

5) Place the first bottle on the scale and hit the scale's print button.



6) The bottle weight should now be in the selected cell and the cell below should now be highlighted and ready for the next bottle to be weighed.

Liquor Products	Full Bottles	Point Counts	Bottle Weights	Product Notes	Total On-Hand
1 Absolut			29.32		0.40
2 Bacardi					0.00
3 Beefeater					0.00
4 Crown Royal					0.00
5 Beefeater					0.00
6 Jameson					0.00
7 Jagermeister					0.00
8 Absolut Citron					0.00
9 Bailey's Irish Cream					0.00
10 Blue Caracao					0.00
11 Captain Morgan					0.00
12 Cuervo Gold					0.00
13 Cuervo Silver					0.00
14 Dewars					0.00
15 Kahlua					0.00
16 Johnnie Walker Black					0.00
17 Fireball					0.00
18 Jack Daniels					0.00
19					
20					

Basic weighing steps:

- 1) Select the starting cell
- 2) Place first bottle on scale
- 3) Hit the print button (weight is transferred and the product cell below is automatically selected)
- 4) Place next bottle on scale
- 5) Hit the scale's print button
- 6) And repeat until inventory is done.

Troubleshooting:

Problem: When running 232Key with the scale plugged into your computer's USB port you receive the following error "No RS232 Port Found".

Solution: First check and make sure both ends of the USB plug are completely connected into both the scale and your computer. If you continue to receive the "No RS232 Port Found" error, your computer might be missing a required Windows driver. To install the driver follow the steps below.

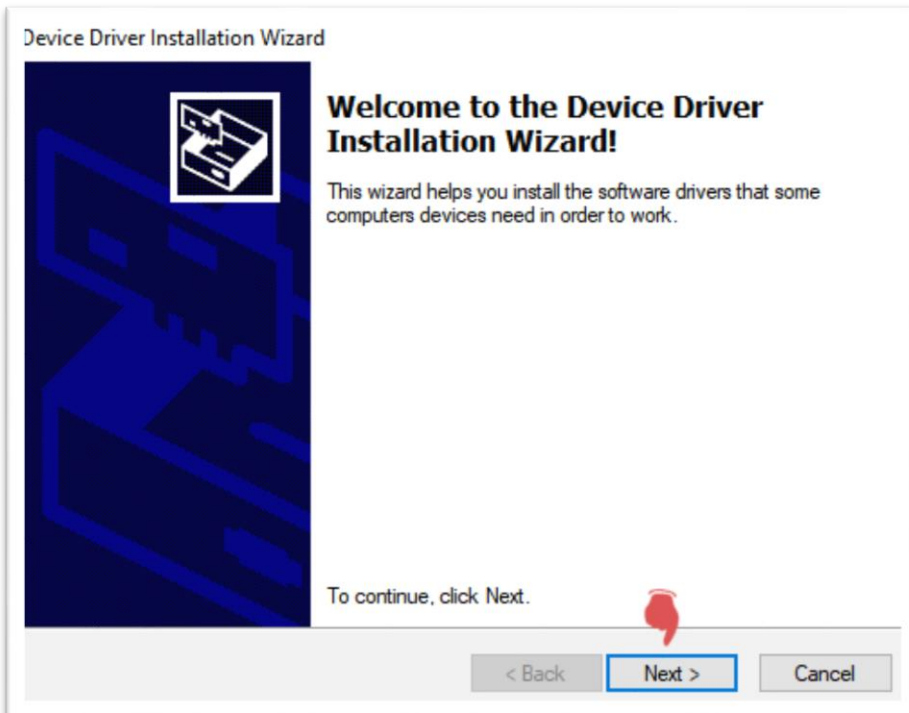
- 1: Download the driver zip folder.

[Click here to download driver](#)

Alternatively copy the following URL address and paste into your web browser and hit enter to start downloading file zip folder.


https://cdn.shopify.com/s/files/1/1507/5436/files/FT230X-Basic_UART-Driver.zip?v=1613004447

- 2: Open the zip folder and click the CDM21228_Setup file to begin installation and follow the installation process. Once the driver has been installed, reopen 232Key and it should now recognize the USB port the scale is plugged into.



Device Driver Installation Wizard

License Agreement



To continue, accept the following license agreement. To read the entire agreement, use the scroll bar or press the Page Down key.

IMPORTANT NOTICE: PLEASE READ CAREFULLY BEFORE INSTALLING THE RELEVANT SOFTWARE:

This licence agreement (Licence) is a legal agreement between you (Licensee or you) and Future Technology Devices International Limited of 2 Seaward Place, Centurion Business Park, Glasgow G41 1HH, Scotland (UK Company Number SC136640) (Licensor or we) for use of driver software provided by the Licensor(Software).


BY INSTALLING OR USING THIS SOFTWARE YOU AGREE TO THE

I accept this agreement I don't accept this agreement

Save As Print

< Back **Next >** Cancel

Device Driver Installation Wizard



Completing the Device Driver Installation Wizard

The drivers were successfully installed on this computer.

You can now connect your device to this computer. If your device came with instructions, please read them first.

Driver Name	Status
✓ FTDI CDM Driver Packa...	Ready to use
✓ FTDI CDM Driver Packa...	Ready to use

< Back **Finish** Cancel