

GEZE in motion for 150 years!



1212 ID 152628 EN

GEZE GmbH
Reinhold-Vöster-Straße 21-29
71229 Leonberg
Germany
Phone: +49 (0) 7152-203-0
Fax: +49 (0) 7152-203-310
Email: vertrieb.services.de@geze.com
www.geze.com

handlie.com

GEZE in motion!








GEZE in motion since 1863! In line with this motto we will be presenting numerous innovations which use cutting-edge technology, functionality and design to set door, window and safety technology in motion in the year we celebrate our company's 150th jubilee.

At the BAU trade fair we will be presenting new product solutions which round off the GEZE portfolio in all product areas, for door technology and automatic door systems, glass systems, smoke and heat extraction and ventilation technology as well as for safety systems. Of course all the new features showcase GEZE's uniform consistent design and therefore meet the most exacting visual aesthetic standards.

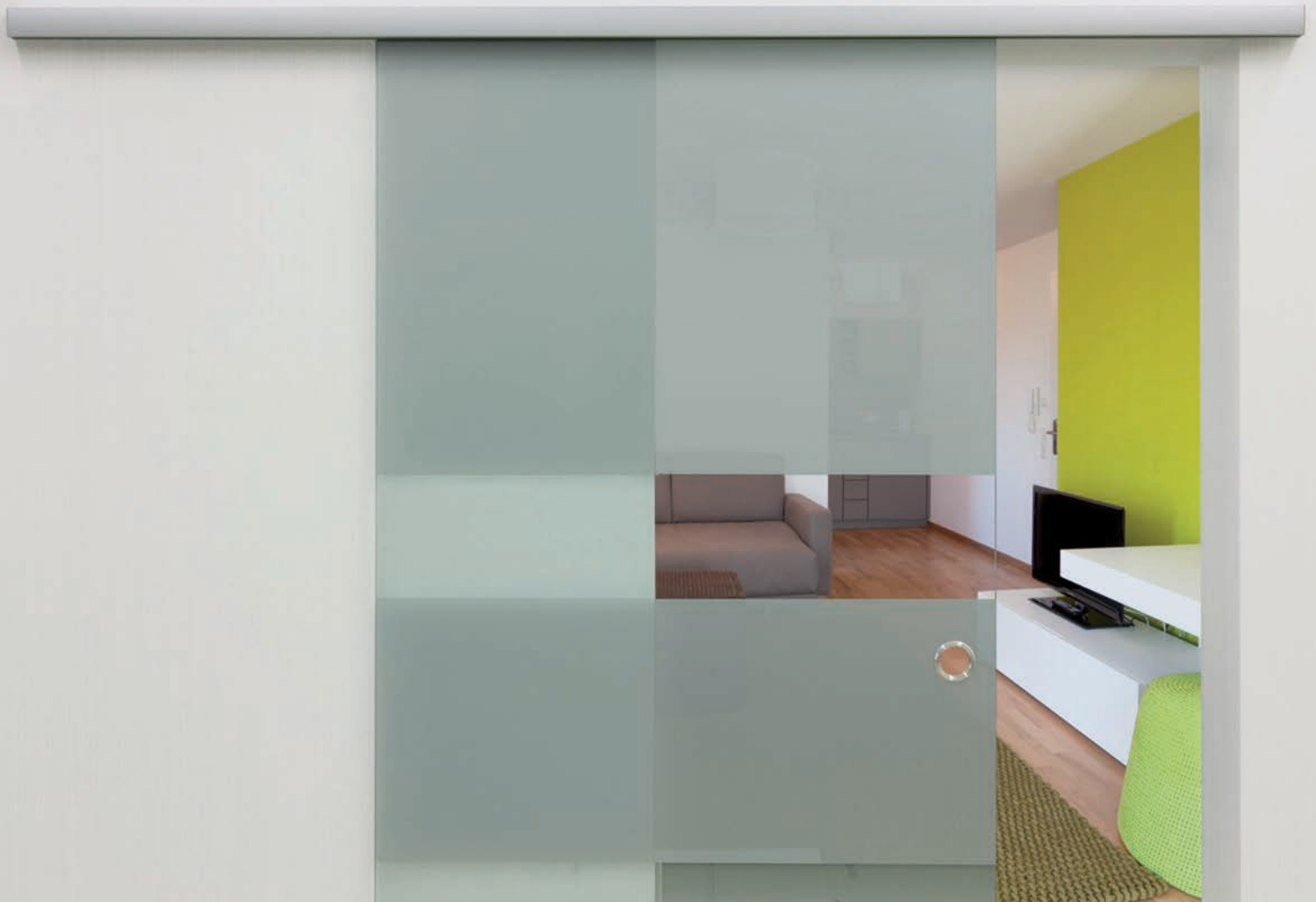
With complete system solutions from a single source, which meet the individual requirements made of doors and windows for all areas of buildings, we offer users maximum possible safety, comfort and efficiency. Very simple installation and numerous additional service features also contribute to this goal.

Sustainability is an important theme which has a decisive influence on our day-to-day actions and product development. Clear signs of our commitment are the certification of our environment management system in line with ISO 14001 and the listing of our products on the website www.greenbuildingproducts.eu. Here, users can find out how far products contribute to sustainable building in the context of a LEED or DGNB certification.

Contents

	Introduction	03
	Fair presentation at a glance	04
	GEZE Door Technology	
	• The GEZE Levolan 60 sliding door system	06
	• The double-sided draw-in damping "SoftStopDuo"	08
	• The new generation of freeswing door closers:	10
	The freeswing door closer range GEZE TS 5000 EFS / RFS 3-6	
	The integrated freeswing door closer GEZE Boxer EFS 4-6	
	• New and reworked door technology accessories:	12
	The new lintel and ceiling-mounted fire alarm from GEZE	
	The reworked GEZE holding magnet range	14
	The GEZE CB flex carry bar	16
	GEZE Automatic Door Systems	
	• The TSA 325 NT RC 2 revolving door system	18
	• The GEZEconnects software module	20
	• The automatic leaf locking mechanism Lock A	22
	• The mechanical leaf locking mechanism Lock M	
	• The swing door drive GEZE Ecturn Inside	24
	GEZE Glass Systems	
	• The Pendulo System	26
	GEZE RWA and Window Technology	29
	• ECchain	30
	• Slimchain	32
	• Powerchain	34
	• The Smart fix installation system	36
	• The GEZE E 920 - E 990 electrically-operated chain drives range	37
	• The new locking drives Power lock and E 905 / E 906	38
	• The E 250 NT spindle drive	40
	GEZE Safety Technology	
	• The GEZE alarm unit GCAU 200	42
	• The GEZE relay module GCOC 8	44
	• The self-locking panic lock IQ lock AUT	46
	• The GEZE building system	48
	GEZE "added" value with outstanding all-round service	50
	• Services: the complete range	
	• Top-rate maintenance	
	• Innovative technology based services	
	Sustainability at GEZE	54

GEZE in motion!



The GEZE Levolan 60 sliding door system

Sophisticated aesthetics with maximum flexibility and small spatial requirements

Levolan 60 Smart fix mounting system





With the compact Levolan 60 sliding door system, GEZE has created a new sophisticated solution to design easy-to-use, manual sliding doors for interior use. Small fitting dimensions and the linear design with a slim, 50-millimetre-high runner track suit every installation situation. The sophisticated fitting technology can be used for door leaf weights of up to 60 kg. The integration of the complete fitting technology in the runner track optimises the overall design and makes fast and straightforward installation possible.

The Levolan SoftStop draw-in damping integrated into the runner track gives additional safety and convenience: the sliding door leaves are guided gently and safely into the end position, with no more banging into the frame or buffer. The risk of fingers being trapped is almost totally excluded.

Product benefits:

- Door leaves made of toughened safety glass (8 to 12 mm) or laminated safety glass (8 and 10 mm), wood, metal or plastic with weights up to 60 kg, TÜV tested in accordance with DIN EN 1527 for 100,000 cycles
- Suitable for installation on the wall, on the ceiling, in the lintel or on a glass fanlight
- Small outer dimensions of only 50 x 50 mm
- Flexible modular system: only 1 runner track for both ceiling and wall installation
- Additional safety through the integrated removal protection which is automatically activated as soon as the door leaf is hung and height adjusted using the convenient eccentric mechanism
- Simple and fast installation with just one installation tool (Allen key) and one open-ended wrench for safety

Do you have any questions regarding the product?

Further information is available at vertrieb.services.de@geze.com





Gentle and quiet as though spring-dampened

The double-sided draw-in damping SoftStopDuo especially
for slim GEZE design sliding doors





Manual design sliding doors are becoming more and more popular. Trendsetters in private accommodation, ideal for offices, hotels and doctors surgeries, they do not require space for opening and ensure optimum room utilisation. To avoid the doors banging and becoming damaged and to close the doors reliably, GEZE relies on the draw-in damping GEZE SoftStop. The controlled closing movement brakes the door about ten centimetres before the end of the guide rail. The sliding door leaves are moved gently and completely silently to their final position, without any uncontrolled banging against the frame or buffer. This protects the fittings from vibration and extends the sliding door's service life. The new double-sided draw-in damping "Soft-StopDuo" from GEZE now permits the double-sided damping even of very narrow door leaves such as the ones used with double-leaf sliding doors.

Product benefits:

- Can be used for high leaf weights up to 80 kg and leaf widths from 700 mm
- Suitable for GEZE Rollan, Perlan, Levolan 60 and Levolan 150 sliding door fittings
- The risk of trapped fingers is reduced to a minimum
- Tested during 100,000 opening and closing cycles: suitable for heavy-duty load and permanent use even in very busy areas
- GEZE SoftStop and SoftStopDuo are easy to retrofit since no preparation work has to be done on the glass or wood

Do you have any questions regarding the product?

Further information is available at vertrieb.services.de@geze.com



The new generation of freeswing door closers

The well-known TS 5000 freeswing door closer range and the integrated freeswing door closer GEZE Boxer EFS: now also suitable for use on barrier-free fire protection doors up to 1400 mm leaf width





Fire protection doors must close automatically and safely in the event of a fire. To guarantee the barrier-free and convenient passage through these doors in hospitals and homes for the elderly, for example, they have to be able to be passed as “normal doors” in everyday use without additional resistance in opening or closing direction. Freeswing door closers from GEZE make this possible: once a door has been opened, it can be passed through without additional force being necessary, since the door closer remains under an electrical bias voltage. In the event of a fire this bias voltage in the door closer is released and ensures the door closes safely and automatically. The integrated freeswing door closer GEZE Boxer EFS and the entire TS 5000 freeswing range (TS 5000 EFS / RFS / ISM-EFS / R-ISM-EFS) have been further developed in terms of both technology and design, and can now be used on barrier-free fire protection doors up to closer size EN 6, i.e. up to a door leaf width of 1400 mm.

In addition, all GEZE freeswing door closers have now been equipped with an innovative and convenient latching function as standard, which permits the door to be fixed in the open position at the end of the freeswing range – and has no effect on the closing function in the event of a fire. This means that doors with GEZE freeswing door closers can consciously be kept open without falling closed again due to a draught, wind or minor contact, or being “in the way”.

Product benefits:

The freeswing door closer range GEZE TS 5000 EFS / RFS 3-6 (and double leaf)

- Closing force can be set variably from EN 3 to EN 6 (1400 mm leaf width)
- Innovative convenient latching function at the end of the freeswing range as standard
- Completely reworked, discreet and easier to install electrical connection, no visible electrical connections particularly with concealed line feed
- There are no changes in terms of installation dimensions, scope of function and accessories compared with the current TS 5000 freeswing range
- The convenient latching function is easy to retrofit to existing systems

Integrated freeswing door closer GEZE Boxer EFS 4-6 (and double leaf)

- Closing force can be set variably from EN 4 to EN 6 (1400 mm leaf width) in the installed state
- Innovative convenient latching function at the end of the freeswing range as standard
- Reworked electrical connection for easy installation
- The closer axis can be extended by 4 or 8 mm by accessories – no separate closer bodies with extended axis have to be kept in stock
- Important for the technician: straightforward door preparation thanks to compact installation dimensions (leaf widths from 600 mm), the width and height of the Boxer EFS 4-6 correspond to those of the previous version

Do you have any questions regarding the product?

Further information is available at vertrieb.services.de@geze.com



Extension and reworking of door technology accessories

New lintel and ceiling-mounted fire alarms from GEZE
Complete hold-open systems from a single source





Doors between fire sections have to close quickly and safely to prevent deadly flue gases from spreading. However, day-to-day use of buildings requires doors to be open some of the time, not least to guarantee barrier-free passage. Hold-open systems keep fire protection doors open electrically and close them safely in the event of a fire – triggered by fire alarms. GEZE offers all hold-open system components from a single source. For even more building safety, the new lintel alarm GC 151 has been equipped with line monitoring – tested in accordance with DIN EN 14637 – to the ceiling-mounted alarms and the manual trigger switch. In addition, the GEZE fire alarm series has been extended by two new ceiling-mounted alarms, smoke detector GC 152 and thermal detector GC 153. These are suitable for installation on all new and existing GEZE hold-open systems with traditional 3-wire technology.

Furthermore, GEZE has developed a new technology which makes the installation of smoke detector products especially easy, straightforward and fast: GEZE ECwire. Ceiling-mounted alarms with ECwire technology (GC 160 family: GC 161, GC 162 and GC 163) are connected by only two wires. In this case line monitoring is activated automatically and without additional components.

Product benefits:

- Integrated line monitoring – tested in accordance with DIN EN 14637 – to the ceiling-mounted alarms and the manual trigger switch without additional wiring work, since the electrical components are already integrated in all ceiling-mounted alarms as standard
- The products with ECwire technology are grouped in the GC 160 family: ECwire lintel alarm GC 161, ECwire ceiling-mounted smoke detector GC 162 and ECwire ceiling-mounted thermal detector GC 163
- The new GEZE ceiling-mounted alarms have been approved and certified by the Deutsches Institut für Bautechnik (German institute for construction technology DIBt) for use on all GEZE hold-open systems
- All smoke detectors have a long service life due to dust and dirt compensation through automatic adaptation of the alarm threshold
- Visual appeal: can be integrated attractively and yet discreetly in the room

Do you have any questions regarding the product?

Further information is available at vertrieb.services.de@geze.com





The reworked GEZE holding magnet range





Electrical door holding magnets can be used as an alternative to hold-open mechanisms for keeping fire protection doors open. They must be linked to a smoke alarm system that deactivates the holding current in the event of fire. As a result, the door is released and closed safely by the door closer. Holding magnets are particularly suitable wherever sturdy and hard-wearing technology is required in public buildings such as football stadiums, sports halls and schools. In addition, the use of holding magnets allows a door to be fixed open at 180 degrees, i.e. doors can be opened completely and are not in the way. GEZE has reworked its existing holding magnet range and equipped with a new design, more comprehensive application and new installation possibilities and added product variants for the international market.

Product benefits:

- The product family will cover:
 - In Germany: holding magnets approved and certified by the DIBt with VDS & EN 1155 test
 - International version for use in the rest of Europe: tested in accordance with EN 1155 (not generally approved for use in Germany)
- New design line in high-quality look, matching the GEZE door closers: all the variants approved and certified for Germany in standard GEZE silver, the international variants in grey
- New installation possibilities:
 - Introduction of a flush-mounted variant
 - Introduction of a new surface-mounted variant: can be fixed to the wall or, by means of a bracket, to the floor
- Line feed of the surface-mounted variant now concealed and thus protected from damage

Do you have any questions regarding the product?

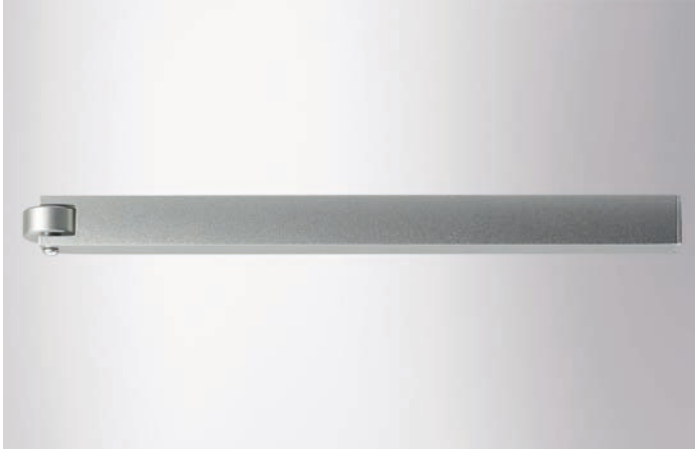
Further information is available at vertrieb.services.de@geze.com



GEZE CB flex carry bar

For the safe closing of double-leaf fire protection doors





The safety requirements in the event of danger are particularly high for double-leaf fire protection doors which are also used as double-leaf emergency exit routes. People fleeing from danger must be able to pass the door as quickly as possible. Then the two door leaves must close again reliably. The integrated closing sequence control ensures the correct closing sequence of the two door leaves. The GEZE CB flex carry bar makes sure that on double-leaf full-panic doors where the fixed leaf can be opened before the active leaf the active leaf is also opened so far that it reaches the waiting position of the door closing sequence. This means both door leaves can then be closed in the correct order.

Product benefits:

- Continuous invisible length adjustment of the CB flex carry bar for adaptation to any door situation
 - Length adjustment can comfortably be carried out after attachment to the door
- The carry bar has been adapted to the design of the GEZE door closers and guide rails
 - Universal, discreet appearance of the whole system
- Attachment and flap mechanism are completely concealed and can thus not be seen from the outside
- The aluminium profile of the carry bar can easily be shortened on site if necessary

Do you have any questions regarding the product?

Further information is available at vertrieb.services.de@geze.com



The revolving door system TSA 325 NT RC 2

The perfect combination of design and certified safety





The entrance area is the showcase of a building. Here, it is important to confirm the positive optical appearance through perfect function of the door system even in the case of high access frequency. GEZE revolving door systems fulfil these requirements and inspire planners, owners and users of buildings alike. Revolving door systems of the type TSA 325 NT can cope with high volumes of people and combine convenient passage with first-class GEZE design. However, in the buildings of important institutions and high-quality retail shops, a high degree of protection against burglary is important alongside design and convenience. For these applications, GEZE has developed the automatic revolving door system TSA 325 NT RC 2 with increased burglar resistance. It is suitable especially for building entrances which have to fulfil high security requirements and still look attractive at the same time.

Additional product benefits:

- Inner night-time closure as locking component for greater resistance to forced entry
- Automatic night-time closure provides increased convenience since manual locking is no longer required
- Inconspicuous protection tested to Resistance Class 2 (component resistance class 2) in accordance with DIN EN 1627 to 1630
- Use of standard profile systems: transparent appearance of the revolving door system retained despite RC 2 functionality
- Convenient and fast parameter setting and maintenance using the wireless software tool GEZEconnects

Do you have any questions regarding the product?

Further information is available at vertrieb.services.de@geze.com



GEZEconnects

Fast and efficient programming using GEZEconnects:
now also available for GEZE revolving door systems





The innovative GEZEconnects software and rapid Bluetooth radio transmission mean that the automatic sliding, swing and revolving door systems from GEZE can be programmed and maintained both simply and efficiently. Programming, set-up and diagnostics can easily be carried out using a laptop or PC. Thanks to a clear programming interface and intuitive operation, complex manuals have been rendered superfluous. The straightforward readout of fault messages allows servicing and maintenance costs to be saved. Diagnostic functions show the most important functional parameters of the door system in real-time. Faults can thus be recognised at a glance and eliminated immediately. GEZEconnects organises door data perfectly. All of your door settings can be saved for documentation, adopted for additional door systems and sent via e-mail.

Additional product benefits:

- The Bluetooth radio module is simply connected to the DCU drive control either directly at the drive or via the programming switch
- Remote servicing and diagnosis are possible by extending the system with WebCare 320 and Quickcare
- Enhanced safety through password protection preventing unauthorised changes to operational parameters and maintenance data
- Existing systems may also be updated to incorporate GEZEconnects compatibility assuming the hardware prerequisites are met
- Software updates can easily be downloaded from the GEZE homepage

Do you have any questions regarding the product?

Further information is available at vertrieb.services.de@geze.com



Enhanced safety with the new leaf locking mechanisms Lock A and Lock M

For automatic sliding door systems from GEZE





Functionality, safety and design are usually the decisive factors when automatic sliding door systems are used. Automatic sliding door systems from GEZE allow the realisation of a wide range of usage requirements in a building, because the focus is on performance, safety, comfort and design. With the new leaf locking mechanisms Lock M and Lock A for the ECdrive, Powerdrive PL and Slimdrive SL NT sliding door systems, GEZE provides increased safety and optimised design. The new leaf locking mechanisms are integrated in the leaf profile and make safe locking and unlocking possible, no matter whether operated manually or automatically. The leaves are locked by hooks on the primary closure edge, which means the floor does not have to be modified.

The automatic leaf locking mechanism (Lock A) is enabled by an actuator integrated in the leaf. In the case of the manual leaf locking mechanism (Lock M), however, the door can be locked and unlocked using a profile cylinder.

Product benefits:

Product benefits of automatic leaf locking mechanism GEZE Lock A

- Safe locking mechanism integrated in the leaf profile on the primary closing edge, with actuator, with several bolts per door if required
- No recess in the floor necessary
- Manual emergency unlocking: the door can always be opened from the inside in the event of a power failure
- Feedback contact enables VDS-tested feedback about the door state
- Parameter setting and control by means of the sliding door control unit
- Leaf locking mechanism available as kit or ready-assembled

Product benefits of manual leaf locking mechanism GEZE Lock M

- Safe locking mechanism integrated in the leaf profile on the primary closing edge, with several bolts per door if required
- No recess in the floor necessary
- Attractive price/performance ratio
- Leaf locking mechanism available as kit or ready-assembled
- Sliding door can be integrated in the in-house closing system by installing a separate profile cylinder

Do you have any questions regarding the product?

Further information is available at vertrieb.services.de@geze.com



The GEZE ECturn Inside swing door drive

“Not visible” integration of barrier-freedom and convenience





With the new ECTurn Inside swing door drive, GEZE links barrier-freedom and safety with optimum door design. Thanks to the small dimensions, the drive can be integrated into the door leaf of internal doors. The ECTurn Inside opens and closes high-quality doors “invisibly” without compromising their appearance. The wide range of special functions such as radio push buttons, mobile radio remote control units or acoustic signals allow the system to be tailored to specific user requirements. ECTurn Inside can be operated in low energy and automatic modes. In low energy mode, the drive moves the swing door at reduced speed and thus fulfils the safety level of DIN 18650. Additional safety sensors can be quickly and simply connected.

Product benefits:

- Can be integrated flexibly in a wide range of door leaves with a thickness of min. 55 millimetres
- Operation in low energy and automatic modes possible
- For door leaf widths up to 1100 millimetres or leaf weights up to 125 kg
- An optional rechargeable battery provides a safeguard in the event of a power failure ensuring that the door continues to open automatically and safely -> the door can also be opened manually in the event of a power failure

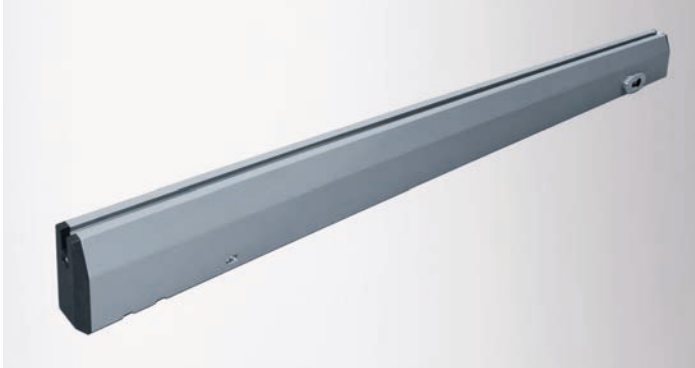
Do you have any questions regarding the product?

Further information is available at vertrieb.services.de@geze.com



Open and transparent room design with the GEZE Pendulo system





Glass is a crucial material in the design of many modern buildings – indeed, it's hard to imagine them without. Solutions made of glass can melt subtly into the architecture of a building, or stand out and accentuate it. They make an open room design possible, at the same time allowing rooms to be partitioned off quickly and easily. The Pendulo system is used wherever a generous, transparent impression of rooms flooded with light is to be retained. Double-action doors with and without fanlight can be combined with any number of fixed panels. Installation in the ground is not necessary, since there is an adequate door closer integrated in the door profile.

The Pendulo system stands out due to their very simple and fast configuration and installation. Since only minimum intervention in building structures (floor, ceiling, walls) is necessary, the system is predestined for installation in existing buildings. The door rail always protects the lower edge of the glass, allowing use even in very busy areas.

New configuration tool makes ordering, configuration and project processing child's play

We aim to achieve maximum customer satisfaction with reliable, competent and highly efficient customer services at all times. For this reason, we have extended the GEZE SystemShop by an additional service for our customers: the newly developed configuration tool for the Pendulo system allows very straightforward and fast project processing and automatically generates all the drawings required. The suitable system is configured on the basis of the clear dimensions and a few additional specifications. The data entered are shown in real-time in a preview window for clearer visualisation. At the end of input, alongside a list of the system components required, all the necessary drawings are generated automatically: an overview drawing which shows the complete system, assembly drawings for each individual glass element and a set of drawings showing all the glass parts needed for the glass order.

Product benefits:

- Simple and easy installation thanks to the integration of the door closer in the door rail
- No glass preparation necessary: the fixed panel profile with clamping jaws that can be fixed anywhere permits a high degree of planning and installation flexibility
- No major structural intervention in flooring, walls and ceilings necessary
- Simple compensation of building tolerances through fixed panel profile with variable glass inset with 5 mm tolerance
- Customers have a choice between two different variants of delivery scope:
 - All the components required for the system are delivered cut to size.
 - The system is delivered in the form of kits which have to be cut to the required length.

Do you have any questions regarding the product?

Further information is available at vertrieb.services.de@geze.com

Product benefits:

- Automatic creation of drawings on the basis of only a few specifications
- All the necessary drawings (overview, installation and glass drawings) and a list of the system components required are generated automatically and provided free of charge
- The glass required can be ordered quickly and easily thanks to the automatic generation of the glass drawings
- Graphical presentation of the data input in a preview window in real-time

Do you have any questions regarding the product?

Further information is available at vertrieb.services.de@geze.com

GEZE in motion!





Security and user convenience with the new window drives

When it comes to the secure and convenient opening and closing of windows, GEZE has extended its window technology expertise still further. New, innovative and elegant system solutions for fast, reliable natural smoke extrac-

tion in the event of fire and for daily ventilation are being presented. With this collection, it is user convenience, security, intelligent control and energy efficiency that stand at the forefront.

The new generation of chain drives from GEZE


When combined with the relevant locking drives, the ECchain, Slimchain, Powerchain and E 920 – E 990 drives create a complete range of products which has been designed in the integrated GEZE design and with universal control technology. Each drive fulfils quite specific usage requirements: whilst the ECchain is a cost-effective entry-level model, suitable for use in private apartments, for example, the “all-round” model Slimchain is extremely versatile and also features a discerning

design. The powerful Powerchain chain drive can be used for particularly heavy and large window elements in public buildings. Thanks to their integrated installation, the variants of the E 920 – E 990 range are ideal for use in the most modern architecture with a purist design in which technology is to be seamlessly integrated. With the Smart fix installation system, GEZE offers a quick, easy and integrated, installation of the Slimchain and Powerchain drives.



GEZE ECchain

Simple automation possibilities, including for private apartments, with the cost-effective entry-level model

 ECchain: cost-effective entry-level model

Economicalness:	●●●●●●●●
Performance:	●●●●○●○●
Design:	●●●●○●○●
Ease of Installation:	●●●●●●●●



* Classification based on comparison among the new GEZE chain drives



User convenience and accessibility are becoming increasingly important in private households. One aspect that is experiencing a growing demand within this context is the cost-effective automation of windows and doors. When it comes to window technology, GEZE is reacting to this demand with the new “ECchain” chain drive. True to its name (pronounced “easy chain”), the cost-effective and high-performance entry-level model from the new generation of GEZE chain drives offers simple automation possibilities for ventilation applications. The ECchain can also be used on small skylights. Furthermore, a maximum opening angle can be achieved even in the case of very low casement heights.

Product benefits:

- Inexpensive and high-performance chain drive for ventilation with 230 V
- The integrated option to set the stroke to 200 mm and 400 mm allows for adjustment in line with different ventilation requirements
- Universal brackets and consoles for profile systems available on the market
- The drive can be ideally adapted to suit the window profile thanks to the various colour options
- The drive is quick and easy to install thanks to an optional drilling template


Do you have any questions regarding the product?

Further information is available at vertrieb.services.de@geze.com



GEZE Slimchain

The all-rounder: flexible use and slim design



**Slimchain: design orientated
all-round talent**

Economicalness:	●●●●●○
Performance:	●●●●●○
Design:	●●●●●○
Ease of Installation:	●●●●●○



* Classification based on comparison among the new GEZE chain drives



As “all-in-one” solutions, innovative building technology products increasingly need to be as versatile and flexible as possible. This is precisely the strength of the all-rounder, Slimchain. It covers a broad range of application options and fulfils diverse requirements relating to loads, stroke lengths, opening widths and the most wide-ranging kinds of installation. A further clear advantage of the Slimdrive is found in its name: thanks to its slim and discreet look, the new chain drive can be ideally integrated into the façade design, thus fulfilling the highest design requirements. It is suitable for both natural ventilation and for use as an RWA and for SHEVs in line with EN 12101-2.

Product benefits:

- Available in the stroke variants 300 mm, 500 mm and 800 mm; continuously adjustable drive stroke and individual speeds for the ventilation and RWA mode
- Can be used for natural ventilation (230 V in connection with a mains adapter), as an RWA (24 V) and in SHEVs in line with EN 12101-2
- DIP switch to alternate between operating modes: the same drive can be used in various modes (e.g. solo and synchro)
- Intelligent control technology: the drive can be used for intelligent ventilation and RWA controls via the GEZE façade bus and can be incorporated into the building management system
- Integrated synchro module: true synchronisation from up to 3 drives without the need for an external control device

Do you have any questions regarding the product?

Further information is available at vertrieb.services.de@geze.com



GEZE Powerchain

The new power pack for heavy window elements



Powerchain: Power pack

Economicalness: ●●●●●○
Performance: ●●●●●○
Design: ●●●●●○
Ease of Installation: ●●●●●○



* Classification based on comparison among the new GEZE chain drives



The architecture of prestigious public buildings is largely defined by transparency and light. For this reason, the use of large and often heavy window elements is a matter of course for many architects and planners. The new powerful Powerchain drive chain is especially suited to this purpose. Above all, it fulfils requirements concerning heavy loads and very large opening widths. Powerchain is suitable both for natural ventilation and for use as an RWA and for SHEVs in line with EN 12101-2. In addition, it allows for rapid opening speeds especially for RWA purposes, including in the case of heavy windows, and is also suited for use with skylights.

Product benefits:

- Available in the stroke variants 600 mm, 800 mm and 1200 mm; continuously adjustable drive stroke and individual speeds for the ventilation and RWA mode
- Can be used for natural ventilation (230 V in connection with a mains adapter), as an RWA (24 V) and in SHEVs in line with EN 12101-2
- DIP switch to alternate between operating modes: the same drive can be used in various modes (e.g. solo and synchro)
- Intelligent control technology: the drive can be used for intelligent ventilation and RWA controls via the GEZE façade bus and can be incorporated into the building management system
- Integrated synchro module: true synchronisation from up to 3 drives without the need for an external control device

Do you have any questions regarding the product?

Further information is available at vertrieb.services.de@geze.com

The Smart fix installation system – drive installation made easy

With the Smart fix installation system, GEZE offers a quick, easy and integrated, installation of the drives – simple click technology. The new Slimchain and Powerchain chain drives already feature this new installation technology, which

saves time and energy. The drives are "clipped onto" the consoles using press studs and a click system. Positioning the drives is completely straightforward. Cable routes are variable, and object-related cable lengths are possible.





The integrated electric chain drive GEZE E 920 – E 990



Product benefits:

- Available in the stroke variants 200 mm, 400 mm, 500 mm, 700 mm and 900 mm; continuously adjustable drive stroke and individual speeds for the ventilation and RWA mode
- Can be used for natural ventilation (230 V in connection with a mains adapter), as an RWA (24 V) and in SHEVs in line with EN 12101-2 (up to 900 mm stroke)
- DIP switch to alternate between operating modes: the same drive can be used in various modes (e.g. solo and synchro)
- Intelligent control technology: the drive can be used for intelligent ventilation and RWA controls via the GEZE façade bus and can be incorporated into the building management system
- Integrated synchro module: true synchronisation from up to 3 drives without the need for an external control device

Do you have any questions regarding the product?

Further information is available at vertrieb.services.de@geze.com



E 920 - E 990: integrated solution

Economicalness:	● ● ● ● ● ● ● ● ● ●
Performance:	● ● ● ● ● ● ● ● ● ●
Design:	● ● ● ● ● ● ● ● ● ●
Ease of Installation:	● ● ● ● ● ● ● ● ● ●

* Classification based on comparison among the new GEZE chain drives

A purist design for large windows

Large windows for maximum light and transparency and a purist design – these are the elements determining modern architecture. This reduction of considered aesthetics determines the RWA and ventilation systems of the E 920 – E 990 range of electric chain drives. No parts are visible from the outside because the drive and fittings disappear inside the window. This prevents dirt accumulating, extends the lifetime and the window design remains untouched. The very low power consumption of the drives combined with the emergency power control unit results in an overall solution with a very attractive price/performance ratio.



The locking drives

E 905 / E 906 and Power lock

Additional security and weather protection

The trend towards larger and larger windows, along with the holding force of the drive at the locking point requires an additional locking unit in order to ensure that the defined performance classes as set out in DIN EN 14351-1 are met. This is particularly important with regards

to wind loads, sealing in the event of rain and air tightness. With the locking drives E 905 / E 906 and Power lock, GEZE is presenting two locking drives, which can be used to operate additional locking points.

The integrated E 905 / E 906 locking drive

The E 905 / E 906 represents a locking drive, which fulfils the requirements of the DIN EN 14351-1. Fully integrated into the window profile, this locking drive is used in combination with the E 920 - E 990 range of drives, and, like the Power lock, allows for the secure opening and locking of even large window casements. The E 905 / E 906 is invisible in the truest sense of the word as the complete drive and fitting technology disappears into the profile of this system solution. This prevents the contamination of the drive, thus ensuring a long life span. In addition, the window architecture remains unchanged.



Additional product benefits:

- Quick and easy installation: practically no processing of the profiles required
- An intelligent solution for cabling in the case-ment saves time when it comes to cabling, and ensures a clean appearance
- Locks and unlocks in less than five seconds: when combined with the E 920 - E 990, the E 905 / E 906 lock can be used as a SHEV in line with EN 12101-2
- Can be used together with central locking devices available as standard
- Electronic end-position cut-off offers protection against incorrect operation and overloading

Do you have any questions regarding the product?

Further information is available at vertrieb.services.de@geze.com





The Power lock locking drive

The GEZE Power lock locking drive can be used as a system solution with the Slimchain and Powerchain chain drives, as well as with the E 250 NT spindle drive. GEZE offers its customers complete solutions for the secure opening and locking of large windows. The Power lock has been designed to fit the look of the new chain and spindle drives. In addition, the drive aesthetic can be adapted to suit customer requirements.



Product benefits:

- Suitable for use in frame and casement installation
- Suitable for flexible retrofitting to an existing system with the new chain and spindle drives
- Can be locked and unlocked in five seconds: when combined with Slimchain, Powerchain and E 250 NT, the system can be used as a SHEV in line with EN 12101-2
- Can be used together with central locking devices available as standard
- Electronic end-position cut-off offers protection against incorrect operation and overloading

Do you have any questions regarding the product?

Further information is available at vertrieb.services.de@geze.com





The spindle drive GEZE E 250 NT

Greater functionality in the discreet GEZE design





The demands being placed on building technology systems are ever-increasing. They need to provide a high degree of security, allow for wide-ranging functionality and live up to the greatest design requirements. In the field of electric spindle drives, GEZE is presenting an E 250 drive which has been completely reworked, both in terms of functionality and look. The new E 250 NT drive offers safe and fast smoke and heat exhaust as well as smoke extraction. It can also be used for daily aeration and ventilation. In order to guarantee building operators a flexible use of the E 250 NT, the drive fulfils diverse requirements relating to loads, stroke lengths, opening widths and types of installation. The control technology for the E 250 NT has been fully reworked and the drive design has been adapted to suit the universal, discreet GEZE design.

Additional product benefits:

- Available in the stroke variants 100, 150, 200, 230, 300, 500, 750 and 1000 mm
- Can be used for natural ventilation (230 V in connection with a mains adapter), as an RWA (24 V) and in SHEVs in line with EN 12101-2
- DIP switch to alternate between operating modes: the same drive can be used in various modes (e.g. solo and synchro)
- Intelligent control technology: the drive can be used for intelligent ventilation and RWA controls via the GEZE façade bus and can be incorporated into the building management system
- Integrated synchro module: true synchronisation without the need for an external control device

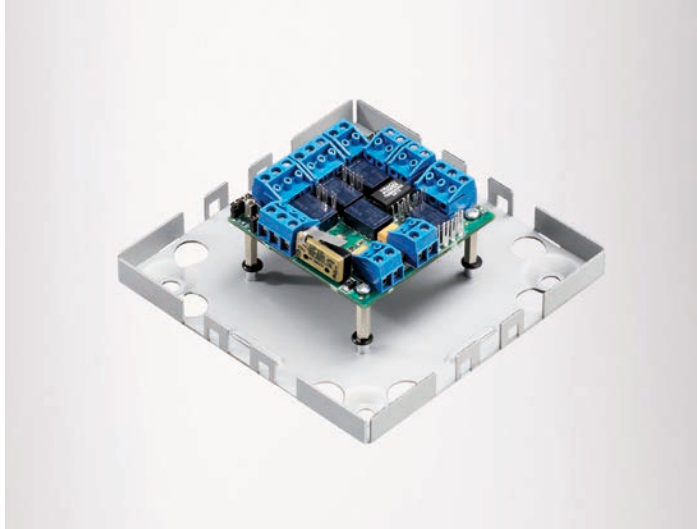
Do you have any questions regarding the product?

Further information is available at vertrieb.services.de@geze.com



Additional functions complete the GEZE SecuLogic access control system





The networking of security systems which connect individual systems – even those produced by different manufacturers – through interfaces is becoming increasingly important for building operators. As a compact, web-based “all-in-one” system solution with all the components relating to doors, the GEZE SecuLogic access control system satisfies the requirements of modern identification systems. The components include, for example, the access control unit with integrated authorisation management, the door unit and ID card or biometric fingerprint readers. The access control system can be adapted step-by-step to the size and the requirements of the respective security concept. With the two new modules alarm unit GCAU 200 and relay module GCOC 8, GEZE has extended the GEZE SecuLogic access control system by two important interface solutions.

GEZE alarm unit GCAU 200 – networking of access control and alarm technology for even more convenience and security

The alarm unit GCAU 200 is an optional extension of the control unit GCDU 200. It is used in buildings that are protected against break-ins, in which the comfort and security benefits of an access control system are also to be exploited. Via the alarm unit, the GEZE SecuLogic access control system can be combined with the alarm technology of a building. The activation and deactivation of alarm systems can thus take place through the access control system. If the alarm system is activated, access is automatically denied at the access control readers. Only when the alarm system is deactivated by an appropriately specified reader is it possible to enter the building again through the access control.

Additional product benefits:

- GCAU 200 is compatible with all alarm systems on the market
- Synergies of the readers used: access control and the activation of the alarm take place through an ID or fingerprint system
- Integrated concept: the door unit and alarm unit are accommodated in a standard housing with the dimensions 120 x 120 x 40 mm
- Different control functions can be initiated using different fingers
- The definition and management of security areas take place using the standard web browser of the GCMU 524 or the GCMU 200

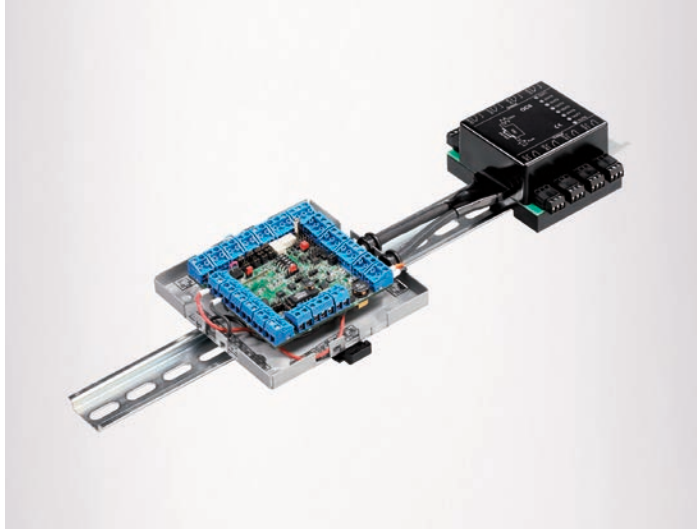
Do you have any questions regarding the product?

Further information is available at vertrieb.services.de@geze.com



GEZE relay module GCOC 8





Controlled access with the new GEZE lift control

Lifts have long been a matter of course in modern multi-storey buildings. In many cases, however, not all floors are supposed to be accessible to all visitors, and they should be protected against unauthorised access. With the relay module GCOC 8, GEZE provides building operators with a convenient solution for organising the user authorisations of lifts and assigning appropriate authorisations. An individual's access profile indicates which relay is switched on in the event of an authorised entry, i.e. which floors an individual is authorised to access. This makes the targeted unlocking of one or more floors possible in a lift.

Additional product benefits:

- Output extension of the door unit GCDU 200, which provides 8 relay outputs
- Keypad for the selection of the floor is unlocked using an ID card or fingerprint reader
- Numerous relay outputs are controllable or configurable: this means that any number of authorisations can be issued for floors or groups of floors
- Multiple control function as a lift control with an RFID card or fingerprint: use of the ID card or fingerprint that is already available for access control
- Simple and convenient management of the authorisations via the standard browser. No additional software required.

Do you have any questions regarding the product?

Further information is available at vertrieb.services.de@geze.com



The self-locking panic lock GEZE IQ lock AUT for double-leaf automatic doors





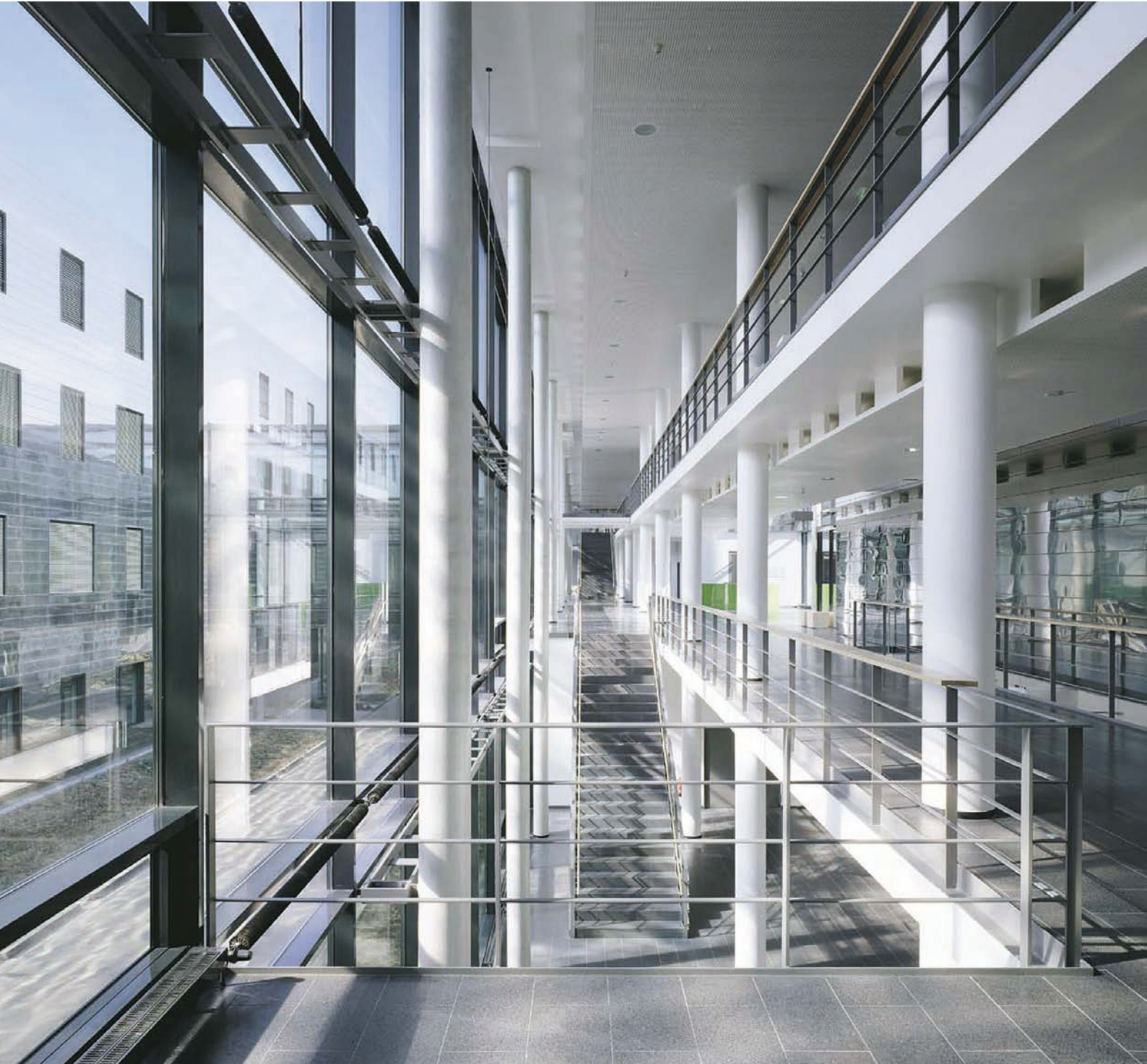
Fast opening in an emergency and controlled access are the strengths of self-locking panic locks. With the IQ lock AUT, GEZE is presenting a multifunctional system solution for full panic doors with automatic door leaves on both sides. This means that both active and fixed leaves can be unlocked by a motor drive. Thanks to the full panic function, both door leaves can be unlocked mechanically at the same time in an emergency by pressing the panic bar. After passage through the door, the mechanical self-locking feature becomes active, locking the door quickly and securely. As an RWA fresh air system, the IQ lock AUT guarantees the automatic unlocking and opening of both door leaves after automatic release e.g. by means of a smoke detector. This ensures both safe smoke removal and a comfortable exit from the building. The operating mode "permanently unlocked" allows both locks to be permanently unlocked so that the swing door drives can be activated very quickly by the respective actuation devices e.g. a radar detector or access control system, allowing fast and easy passage through both door leaves.

Additional product benefits:

- Locking of both door leaves every time they are closed in line with insurance requirements
- Additional burglar resistance through 20 mm deep rod locking
- Specific barrier-free access via access control or key switch
- In the case of double-leaf doors, an automatic fixed leaf makes the automatic unlocking and opening of both door leaves possible
- Connection to the GEZE SecuLogic building system allows relaying of door states (open/closed) to higher-order systems and remote locking of the door
- Convenient retrofitting to existing doors
- Simple configuration and fault detection through connection to the GEZE service terminal ST 220

Do you have any questions regarding the product?

Further information is available at vertrieb.services.de@geze.com



Universal interface and extended operating options for the GEZE building system





The demand for intelligent complex control systems in the area of building technology is steadily growing. Many users wish to have central control and monitoring of automatic door and window systems. Additionally, the systems should react to environmental influences, such as direct sunlight, rain and wind, and take safety aspects into account at the same time. Thus, automatic window and door systems are required, which provide additional comfort and contribute to saving energy.

The GEZE building system is a control and visualisation system used in door, window and safety technology. It indicates whether a door or window in a certain area is open or closed, and allows a corresponding control. The system can be used for controlling, maintenance and parameter setting. In combination with the respective sensors, the building system can be controlled, for example, subject to environmental influences.

A universal interface permits the communication of the GEZE building system with all conventional bus systems used in building system technology and thus the simple and fast networking of the GEZE building system with super-ordinate central building control systems.

GEZE Cockpit App – operating comfort and flexibility with the new GEZE App

The GEZE Cockpit App allows additional operating comfort, flexibility and safety. Suitable for conventional smart phones and tablets, users of the GEZE App can visualise and operate the state of the windows and doors connected to the building system also while en route. Furthermore, for building operators and maintenance personnel there is the possibility to parameterise the connected components via the GEZE Cockpit App and derive a diagnosis about the current state of the windows. The menu navigation used for the new GEZE App is clear and well designed and provides a fast overview of the various functions.

Product benefits:

- Universal interface option for the communication with all conventional bus systems used in building system technology (KNX, LON, Modbus etc.)
- Additional operating comfort thanks to the possibility to operate and visualise via the GEZE Cockpit App
- Can be used for controlling, maintenance and the setting of parameters

Do you have any questions regarding the product?

Further information is available at vertrieb.services.de@geze.com



GEZE Service means added value



Regular servicing is essential for long-lasting, flawless functionality, longevity and the retention of value for door, window and safety systems. Individual service is a key factor at GEZE. We want to make our customers' jobs as easy as possible, and to help them achieve savings, both in terms of time and cost, with intelligent service offers. From installation to servicing, to repairs and modernising your machinery, you are always on the safe side with us. The GEZE

Service GmbH operates as an independent company, which forms a comprehensive global service network together with the international subsidiaries.

We offer you flexible and individual maintenance and service packages. Our innovative and technology based services simplify building management in a unique way and save costs.

One of our services is to offer complete support regarding the building technology for your project. For this reason we have extended our Service-Portfolio to additionally cover products from other manufacturers.

The complete range:
service packages not just
for GEZE products



Maintenance and repair services ...

are available, and not just for

- **GEZE door, window and safety technology**, but also for
- **products, irrespective of their manufacturer.**

This also includes:

- **power-operated doors and gates**
- **barriers** and
- **sorting systems**

Top-rate maintenance

Maximum benefit with tailor-made service packages

With the service packages **COMPACT**, **COMFORT** and **EXCLUSIVE**, we provide you with flexible and individual service packages – for a tailor-made service.

COMPACT

- **24-month warranty**
- Regular service and safety checks in line with GEZE checklists and legal regulations
- GEZE Service Line for fault and repairs receipt: Mon - Sat, 7:30 am - 9 pm
- Reduced hourly rates in the case of faults and repairs
- Response times in the case of faults and repairs: Mon - Fri, within 24 hours

COMFORT

- **24-month warranty**
- Regular service and safety checks in line with GEZE checklists and legal regulations
- GEZE Service Line "24/365" for fault and repairs receipt
- Reduced hourly rates in the case of faults and repairs
- Response times in the case of faults and repairs: Mon - Sat, 7 am - 9 pm, within 24 hours
- Small and expendable parts up to 25 EUR included

EXCLUSIVE – the full-service package

- **60-month warranty**
- Regular service and safety checks in line with GEZE checklists and legal regulations
- GEZE Service Line "24/365" for fault and repairs receipt
- Reduced hourly rates in the case of faults and repairs
- Response times in the case of faults and repairs: Mon - Sat, from 7 am - 9 pm, Sundays and public holidays from 8 am - 6 pm, within 12 hours
- Replacement and expendable parts included, and general reconditioning of the drive systems when the contract ends
- Online access to system details in the GEZE ServicePortal

Longer warranties, more benefits with the GEZE COMFORT Plus service packages

Customers are approaching us more and more often with one wish: When installing new systems, building and plant operators, property management or facility management companies are asking for a long warranty period and cost security – even in cases where they don't require a full-service package. Service providers also have a desire for clarity when it comes to knowing whether or not a fault is covered by warranty. GEZE Service offers a solution that combines the interests of both parties.



The service packages **COMFORT Plus 4** and **COMFORT Plus 5** slot between the COMFORT and the premium package EXCLUSIVE.

COMFORT Plus 4 and COMFORT Plus 5

- **48- or 60-month warranty**
- Regular service and safety checks in line with GEZE checklists and legal regulations
- GEZE Service Line "24/365" for fault and repairs receipt
- Remedial action within 24 hours:
Mon - Sat, 7 am - 9 pm
- Reduced hourly rates in the case of faults and repairs
- Replacement and expendable parts included
- Continues as COMFORT service package after base period of contract

COMFORT Plus 4 and COMFORT Plus 5 offer double added value: there is no risk of liability for defects throughout the entire base period of the contracts. The operating costs for the systems are fixed for the entire contractual period, and as such can be planned.

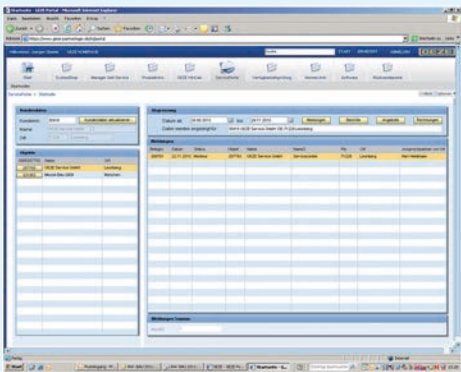


Innovative technology based services

We are making the jobs of metal processors, general construction companies, building operators and facility managers easier with technology based service products. They simplify building management in a unique way and save costs.

The GEZE ServicePortal – all service packages at a glance

For operators and facility managers looking after a number of buildings, efficiency is the key. Providing an overview of all door, window and safety systems for which there are service contracts is a core component of the GEZE ServicePortal. Building operators receive notifications about forthcoming maintenance works. Faults can be communicated directly online in the shortest amount of time. The status of current maintenance and service contracts is shown in full and updated on a daily basis. The documentation of all systems, e.g. maintenance logs, can be called up on the ServicePortal at any time.



The GEZE ServicePortal – Information with "added value"

GEZE QuickCare – Reducing the service visits to automatic door systems

Highly frequented building entrances with one or very few automatic sliding doors make considerable demands on availability. The building operator must always have the assurance that the functionality is guaranteed to the greatest degree possible.

This is precisely where the technology and web-based service tool GEZE QuickCare comes in. It enables automatic fault notification in the event of an emergency and provides remote access to the drive technology. This means short response times when it counts. At the same time, visits to the site to deal with faults can be reduced in many instances thanks to the remote access function. A double benefit to the customer as QuickCare saves both time and money. QuickCare is flexible: automatic sliding doors can also be retro-fitted with the intelligent service tool. QuickCare can also be used with door drives made by other companies.

GEZE MultiSourcing Service – the right mix of resources

We support the ideal use of our technical staff with our MultiSourcing Service. The "in-house" maintenance of power-operated door and window drives and gate systems is combined with GEZE maintenance works with little administration and coordination required. An intelligent solution to capture work peaks, minimise time spent coordinating and falling back on external support. Own and third-party maintenance services can be combined in a flexible maintenance contract in an optimum and cost-effective manner. For this purpose, a complete inventory overview of all drive systems in the administrative scope is made. With the central archiving of data on the GEZE data service, you can always retain an overview. All participants access the same data records and the same information status at all times. Data transfer files are available for further processing in the systems of the building operator or facility management. A specific training programme for the staff of the customer completes the service profile. The GEZE MultiSourcing Service is ideal when it comes to the wide range of door drive systems in properties used for healthcare or in public buildings. It provides support when it is needed!

Sustainable business

Certification of the environmental management system in accordance with ISO 14001



At GEZE, sustainability is an important factor in day-to-day activities. The company has set itself the task of continuously improving the ecology of products and manufacturing facilities, as well as using natural resources responsibly. Sustainability guidelines have already been set up at a very early stage and are implemented in the company's daily business.

From product development and production through to sales, GEZE works according to the latest environmental standards. This is controlled by the company's environmental management system which was certified in line with the ISO 14001 standard in November 2012. ISO 14001 is a global standard for environmental management systems which prescribes how such systems are to be set up. It focuses on a continual improvement process. Environment-related activities throughout all the company divisions are coordinated and pooled by the environmental management with the goal of achieving sustainable environmental compatibility.

With its own environmental management officer, GEZE continually strives to reduce energy consumption and guarantee the responsible use of limited resources. This is achieved, for example, with the aid of modern lighting control as well as with energy-efficient production and conveying systems and, last but not least, by the responsible actions of our employees.



Sustainable building

GEZE products meet LEED and DGNB criteria

Climate change and demographic changes have led to a new way of thinking which has had a significant effect on the construction industry. GEZE is taking on responsibility in this field and is actively committed to the cause of sustainable building.

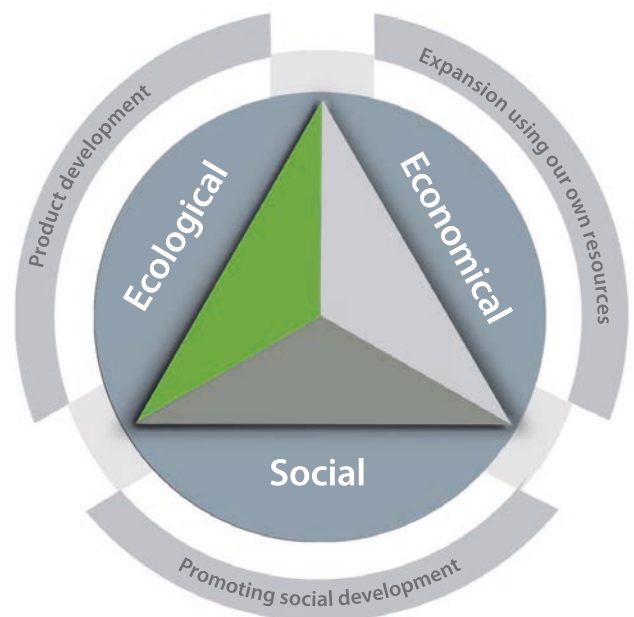
International certification systems such as LEED (Leadership in Energy and Environmental Design) or the DGNB certificate from the Deutsche Gesellschaft für Nachhaltiges Bauen e.V. (German Association for Sustainable Building), recognised in Germany, are becoming more and more important as proof of the energy efficiency or universal access of a building. GEZE products contribute to the achievement of credit points within the context of LEED or DGNB

certification and thus make a positive contribution to the successful certification of customers' buildings. The first GEZE products from various product categories are listed in the product database www.greenbuildingproducts.eu and stored there with the respective LEED and DGNB certificates. The certificates confirm how many credit points are expected to be achieved per product in the different categories when the overall building is certified. The database provides all certification-related product information free of charge and in a transparent manner, allowing users to gain an overview quickly and easily. In addition, all the documents can be downloaded.

www.greenbuildingproducts.eu

GEZE member of DGNB

GEZE has been a member of the DGNB since July 2010. With more than 1100 members from all areas of the construction and real estate industries, the DGNB strives to promote sustainable building. Alongside the protection of the environment and resources, the association also considers the aspects of economic efficiency and user-friendly building.





GEZE
IN MOTION SINCE 1863