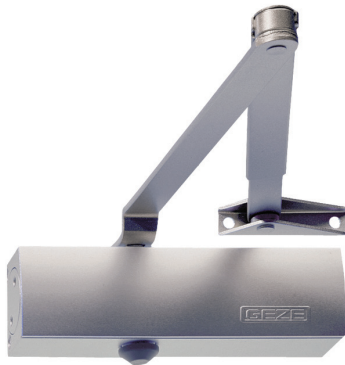


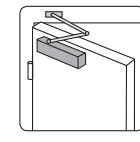
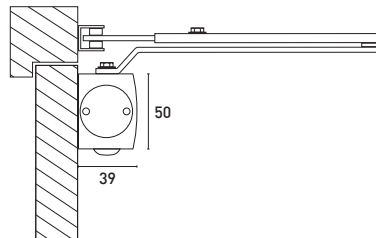
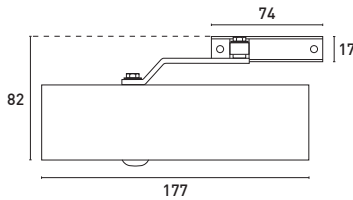


M.TS.1500

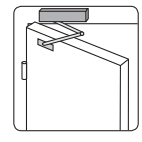


| FORCE EN 1154 | | | | M.TS.1500 |
|---------------|----------------------|--|-------------------|-----------|
| 3 | até / up to: 950mm | | até / up to: 60Kg | ■ |
| 4 | até / up to: 1.100mm | | até / up to: 80Kg | ■ |

■ Força conforme fixação do braço / Force as arm fixing



Instalada na porta
Installed on the door



Instalada no aro
Installed on the frame

| | | |
|-----------|--|--|
| M.TS.1500 | M.TS.1500C | Mola aérea de pinhão cremalheira com braço articulado <i>Overhead rack-and-pinion door closer with link arm</i> |
| | EN 1154 FORCE 3/4 | Força de fecho EN 1154: 3/4 - Regulável conforme fixação do braço <i>Closing force EN 1154: 3/4 - Adjustable as body fixing</i> |
| | | Indicada para portas com uso moderado Certificação CE / Apta para portas corta-fogo (placa de montagem, fornecida em separado) <i>Suitable for doors with medium use</i> <i>CE certification / Suitable for fireproof doors (mounting plate, supplied separately)</i> |
| | | Para portas de batente / Ambidextra / Largura da porta até 1100mm / Peso da porta até 80Kg <i>For single action doors / Ambidextrous / Door width up to 1100mm / Door weight up to 80Kg</i> |
| | | Ângulo de abertura até 180° / Velocidade de fecho regulável Golpe final com regulação hidráulica <i>Opening angle up to 180° / Adjustable closing speed</i> <i>Adjustable hydraulic latching action</i> |
| | Opção: Com aplicação do braço de retenção, possibilidade de retenção entre: 70° a 150° A retenção é ajustável / Possibilidade de desactivar a retenção <i>Option: With application of hold-open link arm, possibility of hold-open between: 70° up to 150°</i> <i>Adjustable hold-open / Possibility to disable the hold-open</i> | |
| | Acabamentos standard: Alumínio prata / Branco / Preto Opções: Bronze, dourado e cores RAL <i>Standard finish: Silver / White / Black</i> <i>Options: Bronzed, golden and RAL colors</i> | |