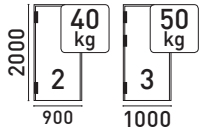
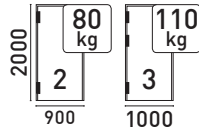


D.505.3D



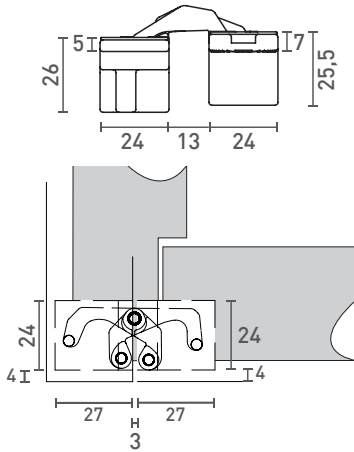
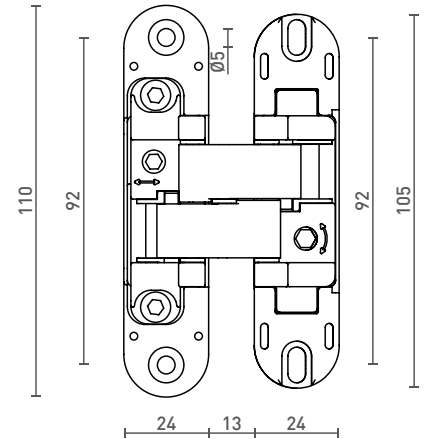
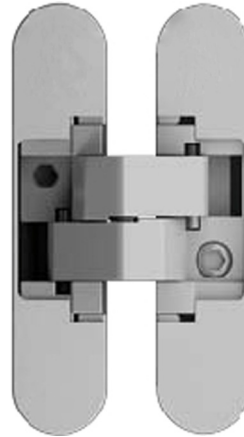
D.580.3D



Dobradiça oculta/ invisível com regulação em 3 dimensões:

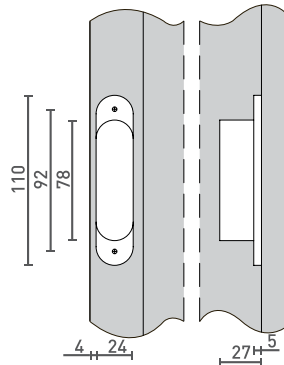
- Lateralmente $\pm 1.5\text{mm}$
- Altura $\pm 2.5\text{mm}$
- Profundidade $\pm 1\text{mm}$;
- Ângulo de abertura: 180° ;
- Diâmetro do fresado: Máx. 24mm;
- Espessura mínima da porta: 35mm;
- aplicável em portas direitas ou esquerdas;

D.505.3D / D.580.3D: Dimensões iguais / intercambiáveis

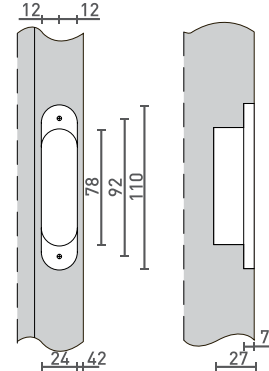


Fresado/ Milling/ Fresado

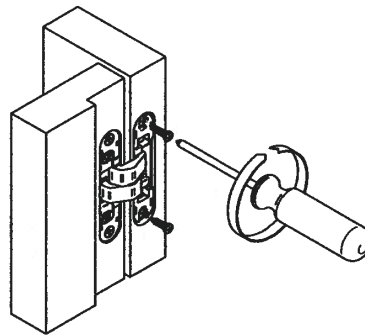
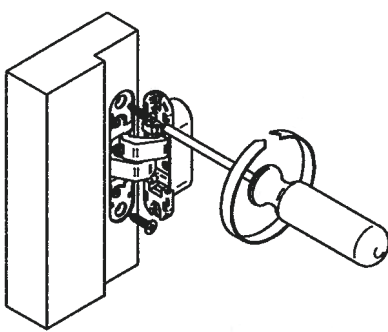
Marco porta/ Frame/ Jamba



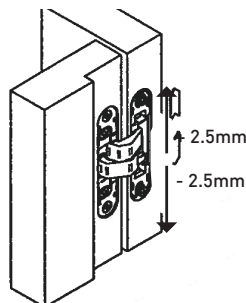
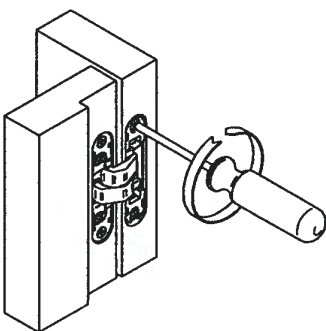
Porta/ Door/ Puerta



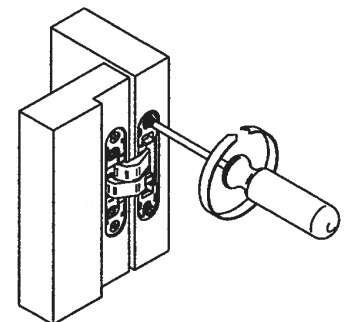
Instruções de montagem da dobradiça/ Hinge assembly instructions/ Montaje de la bisagra



Regulação da altura/ Height adjustment/ Regulación altura



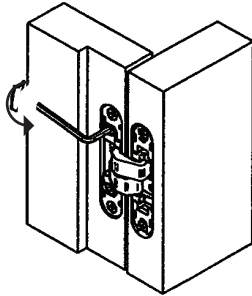
Levantar a porta com calço/
Lift the door with the wedge/
Levantar la puerta con la cuña



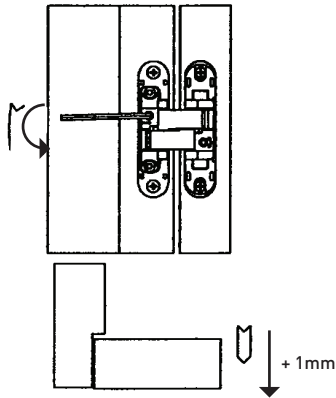
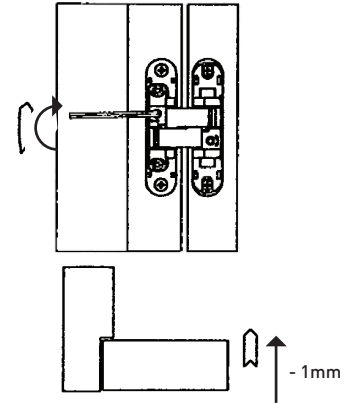
Fixar a dobradiça apertando os parafusos/
Fix the hinge turning both screws/
Apertar los tornillos

Regulação da profundidade/ Depth adjustment/ Regulación profundidad

1 rodado o parafuso
1 turn of the screw
1 giro de tornillo

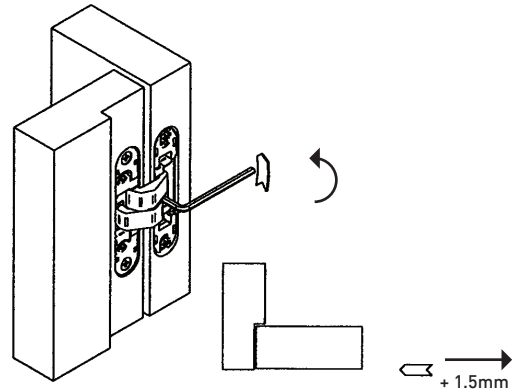
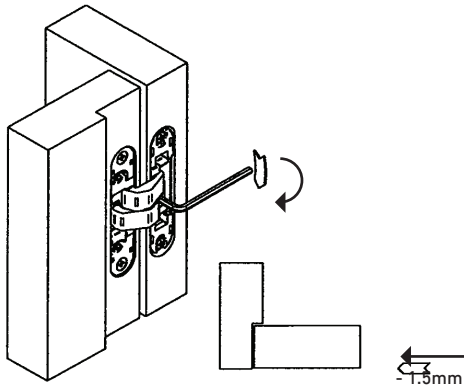


Afrouxar os parafusos
Release the hinge turning both screws
aflojar los tornillos

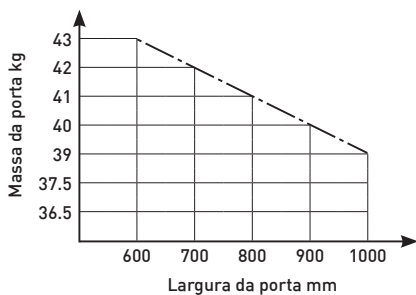


Fixar a dobradiça apertando os parafusos
Fix the hinge turning both screws
Apertar los tornillos

Regulação lateral/ Side adjustment/ Regulación lateral



D.505.3D
Gráfico de capacidade de carga para 2 dobradiças/ Load capacity
2 hinges/ Gráfico de carga con 2 bisagras



D.505.3D
Gráfico de capacidade de carga para 3 dobradiças/ Load capacity
3 hinges/ Gráfico de carga con 3 bisagras

