



Architectural Hardware

[handle.com](https://www.handle.com)

dormakaba 

Door Controls

Opening and Closing



8900 Door Closer, 9300 Rim Exit Device with Removable Mullion and PRT03 Pull Trim

Shown on Cover —
9400 Surface Vertical Rod Exit Device Less bottom Rod, TS93 EMF PT Closer/Holder/Release Device



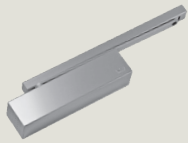
TS93 Door Closer



BTS80 Concealed Door Closer



GSR Surface Door Closer and Coordinator System



**TS93 Series
Cam Action
Surface Door Closer**



**8900 Series
Surface Door Closer**



**8600 Series
Surface Door Closer**



**7400 Series
Surface Door Closer**

DORMA offers a full range of technologically advanced premium products and services that provide safety and security as well as convenience and comfort. In our portfolio are traditional architectural and commercial products that are both beautiful and functional to meet the demands of any building design. All products comply with barrier-free requirements and can be used with aluminum, wood, or hollow metal doors and frames.

Surface Door Closers

DORMA Grade 1 surface closers shown are backed by a 25-year warranty and are certified to meet the requirements of ANSI A156.4.

Assorted specialty function arms, mounting plates, and brackets, as well as a wide range of painted or decorative architectural finishes are available to suit almost any application.

Concealed Door Closers

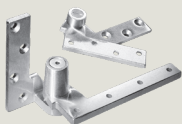
Architects are challenged to design buildings that are both beautiful and functional, down to the last detail. DORMA offers the perfect solution for those who prefer the aesthetic advantages of a concealed door closer without compromising safety and security. Our full range of products includes floor concealed, overhead concealed, and concealed-in-the-door closers.

LM Series Pivots

Designed for long life and trouble-free operation, DORMA's LM Series pivots support door weight effectively in many applications. They span a wide variety of styles that can interface with other DORMA products on wood, aluminum, or hollow metal doors and frames.



8900 Door Closer,
9300 Exit Device with Removable Mullion



LM Series Pivots



**BTS80 Series
Floor Concealed
Closer**



**BTS75V Series
Floor Concealed
Closer**



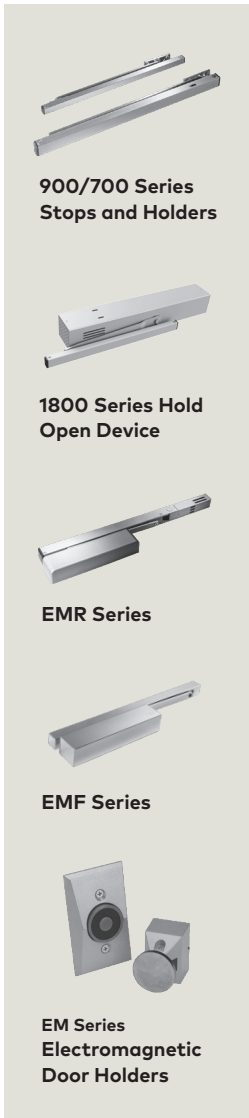
**RTS88 Series
Overhead Concealed
Closer**



**ITS96 Series
Overhead Concealed
Closer**



TS93 EMF PT Closer/Holder/Release Device



900/700 Series
Stops and Holders

1800 Series Hold
Open Device

EMR Series

EMF Series

EM Series
Electromagnetic
Door Holders

Holder/Release Devices

DORMA holder/release devices provide an economical solution for fire and life-safety applications. They allow unimpeded, easy access throughout a building while containing and cutting the spread of smoke and/or fire.

EMR Series Closer/Holder/Release Devices

The EMR Series and 1800 SD models have integral photo-electric smoke detectors that can either be wired into an existing fire/smoke control system or stand alone.

The 1800 models without detectors and EMF Series can function as companion units to the 1800 SD with detectors and EMR devices, or can be wired directly into a central alarm system.

Stops and Holders

DORMA 900/700 Series Stops and Holders complement our full range of door closers to provide a total door control system. Separate stops and holders are the preferred method of limiting door swing.



900 Stop/Holder

Low Energy Operators

Opening and Closing



ED900
Pair Full Width
Seamless Cover



With an innovative electromechanical drive and microprocessor motion control system, DORMA's ED900 is an advanced low-energy swing door power operator that is exceptionally quiet, safe, and easy to use. When operated manually, the ED900 demands little physical effort. Advanced power assist through the entire opening cycle makes even the heaviest-rated door feel light.



ED900 Low Energy Operator

Locks and Key Systems

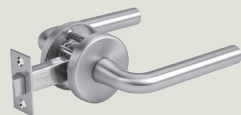
Securing



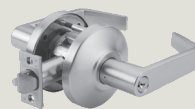
M9000
Mortise Lockset
with LA Lever



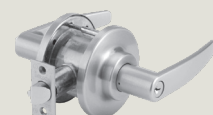
M9000 Series Grade 1
Mortise Lockset



T900 Series Grade 2
Tubular Lockset



C800 Series Grade 1
Cylindrical Lockset



CL700 Series Grade 2
Cylindrical Lockset



M9000 Mortise Lockset with L118 Lever



CL700 Lockset



C500 Lockset

DORMA's mortise, cylindrical, tubular, and dead bolt locks are a comprehensive selection of Grade 1 and Grade 2 locks that meet the functional and aesthetic requirements of commercial and institutional doors. Models throughout the line have UL listings and meet or exceed ANSI standards. In addition, DORMA offers a complete selection of cylinders and keying options, including master keying, construction master keying, and patented key control.

Cylinders and Keying

DORMA offers master key system design and keying services to meet the most difficult challenges. Let us build your ideal key system whether you have a small two door office or a 10,000 door facility. Our experienced keying department will make the process simple. We also offer our patented SKC keyways for those customers who require tighter key control.



**DORMA SKC
Mortise Housing
with SFIC**



**C500 Series Grade 2
Cylindrical Lockset**

**D800 Grade 1
Heavy-Duty Dead Bolt**

**C300 Series Grade 2
Cylindrical Lockset**

**J300 Series Grade 2
Interconnected Lockset**

Exit Devices

Securing

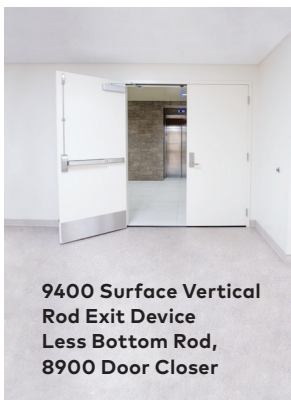
DORMA's wide and narrow stile exit devices for high-impact applications are available in rim, mortise (wide only), and surface or concealed rod configurations in both fire and panic-rated versions.

DORMA exit devices reliably secure egress doors in compliance with all applicable fire/life safety code requirements. A delayed egress exit device is available when security and safety are a concern. They offer the specifier a selection of true architectural finishes and a full complement of electrified options, including alarmed exit, delayed egress exit, motorized latch retraction, electric latch retraction, and device monitoring.

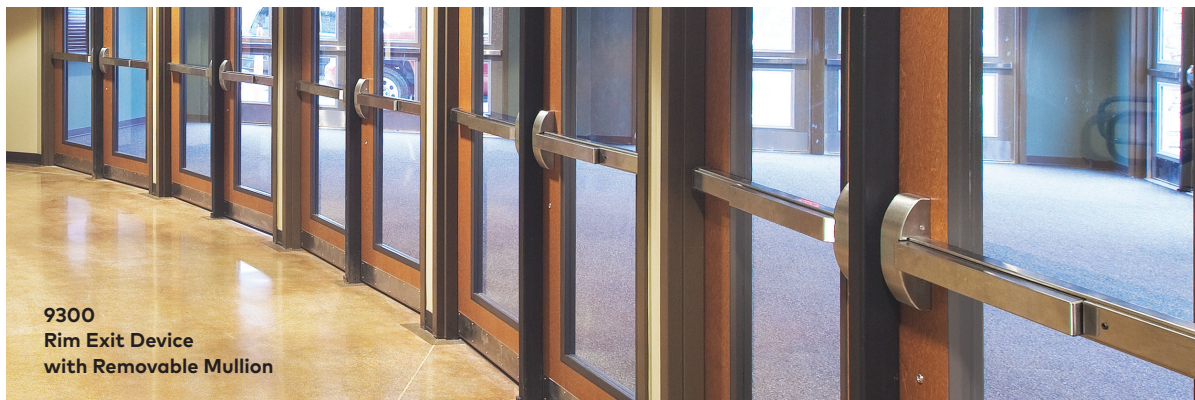
All DORMA exit devices are listed by UL and CUL under their continuing reinspection programs and conform to standard UL 10C positive pressure testing. Select devices are Hurricane-Code approved to Miami-Dade County Florida and Florida State Building Code Acceptance. They are certified to the requirements of ANSI/BHMA A156.3 for Grade 1 exit devices.



9300 Rim Exit Device



9400 Surface Vertical Rod Exit Device
Less Bottom Rod,
8900 Door Closer



9300 Rim Exit Device
with Removable Mullion

9000 Series with Motorized Latch Retraction (MLR)

This high impact exit device is now available with a quiet motor for electronic latch bolt retraction. Ordered as an option on most 9000 Series exits, the MLR feature provides retraction of the latch from the secure side of the door upon authorization of valid access control credential. When activated, the concealed motor in the device's rail draws in the touch bar, thus retracting the latch. Designed for use in quiet environments such as museums, childcare facilities, and hospitals, DORMA's MLR delivers quiet reliability with the security of access control.



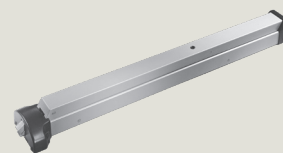
9700 CD Exit Device



9400 Surface Vertical Rod Exit Device



9000 Series Wide/Narrow Stile Heavy Duty Exit Devices



8000 Series Exit Device

Electronic Access Control Securing



EML371 Electromagnetic Lock, 9300 Rim Exit Device, 8900 Door Closer



EML372 Electromagnetic Lock

DORMA's line of access control hardware complements our full line of door controls and exit devices. Electromagnetic locks, including specialized locks, are designed for such applications as gates, cabinets, and sliding doors. Also available are shear locks, delayed egress locks, power supplies, electric strikes, and programmable digital keypads. Completing this line of equipment are desktop

consoles along with push-button and key switch combinations.

DORMA offers a wide range of accessories to complement its line of Electronic Access Control products including Desk Switches, Door Position Sensors, Power Transfer Devices, Timers/Relays, Motion Sensors, and Monitor Strikes.



EMSL/EML Series Electromagnetic Locks



Push Buttons and Key Switches



ES Series Electric Strikes



E-Plex/Powerplex Stand Alone Push Button Locksets



EML310 Electromagnetic Lock, 8900 Door Closer

DORMA Cycle Testing

| | DORMA Series | DORMA Cycles* | Warranty** |
|---------------------|---------------------|---|-------------------|
| Closers | 8900 | 10,000,000 5x grade 1 | 25 Years |
| Exit Devices | 9000 | 2,500,000–15,000,000 Up to 30x grade 1 | 10 Years |
| Locks | M9000 | 13,000,000 13x grade 1 | 10 Years |
| | C800 | 10,000,000 10x grade 1 | 10 Years |

*Witnessed by third-party laboratory.

**United States projects only. For more details visit go.dorma.com/terms.

Durability. Innovation. Integrity. Reliability.

Not only are DORMA products manufactured in some of the most modern factories in the industry, they are also subjected to the most rigorous testing imaginable. We're so confident in DORMA products that we back our products with some of the best warranties available in the industry.



www.dormakaba.com

9.16CT • 3M • USA • 07000453

dormakaba
DORMA USA, Inc.
T: 800 523 8483
F: 800 294 9724

handlie.com