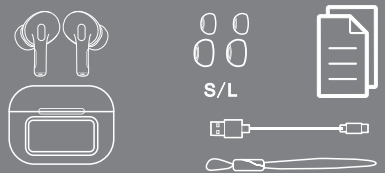


# User manual

## NOTES

1. Please reasonably control the volume and time of using the headset to avoid hearing damage
2. Do not use headphones in potentially dangerous environments to ensure safety.
3. Try to avoid using headphones to listen to music, make or receive phone calls while driving, so as not to distract attention and cause danger.
4. Please place earphones out of reach of children to avoid danger caused by improper use of children.
5. Avoid storing or using headphones at temperatures lower than -20 C or higher than 45c, which will shorten the life of the headphones and battery.
6. Do not disassemble, repair and transform this product by yourself.
7. The battery of this product is not replaceable. Please dispose of it according to local regulations or recycle it by a professional organization. Do not discard it at will. Do not throw it into the fire.
8. When the headset is not used for a long time, please charge the headset every 3 months to extend the battery life of the headset.
9. Do not expose the battery to high temperature environments such as sunshine and fire.
10. The output voltage and current of the charger max.5V/1A. If the output voltage and current of the charger exceed the limit value, it is possible to cause serious damage to the product and product warranty will be void at the same time.
11. Please dispose of waste electronic products correctly, and do not discard electronic and electrical equipment, components, batteries together with other household garbage.
12. Please charge in a safe environment. When charging the charging bin, please pull out the charging cable as soon as possible after the charge is full to avoid damage to the battery caused by long time charging.

## PRODUCT LIST



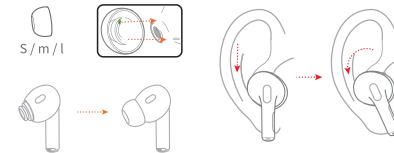
## PRODUCT PARAMETER

Bluetooth version: V5.4  
Talking time: 4 h  
Music time: 4 h  
Charging time: 1 hour  
Charging port: Type-C

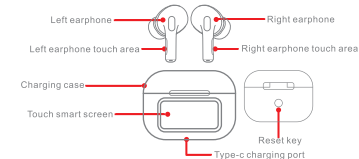
Rated input: 5V-300mA  
Transmission distance: 10m  
Headphone battery capacity: 30mAh  
Charging Case Battery capacity: 300mAh  
Bluetooth frequency: 2.402-2.480GHz

## WEARING MODE

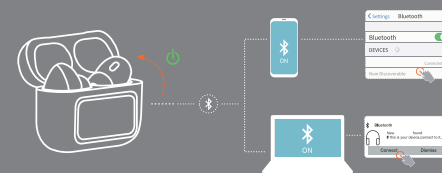
1. Try different sizes ear tips for a perfect fit and audio performance.
2. Adjust to a comfortable position



## PRODUCT DIAGRAM



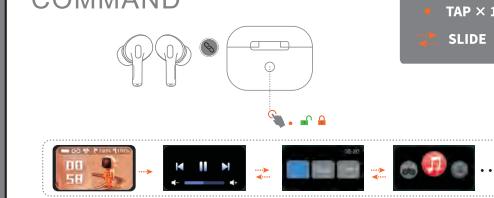
## OPENING AND CONNECTING



## EARPHONE TOUCH COMMAND



## SMART SCREEN TOUCH COMMAND



## FEATURE SHOW

