

Product Instructions

Product name: Electric cleaning brush

Model: ANS-8050



Thank you for your patronage !

Please read the instructions carefully before use and keep them for future reference

The manual contains information about the various ways to use this electric cleaning brush, as well as some tips to make it easier to use, refreshing and comfortable at home.

Switch panel function

Note: These are important, please read them carefully

- » Switch icon: press the "icon" button by hand, the machine will turn on and enter the rotating working mode, the working indicator light will be steady on, and the current remaining power will be displayed. When the machine is working, press the "icon" button by hand, the machine will enter the low speed state, and then press the "icon" button, the machine will stop working and the instructions will be put out
- » When the power is too low, the bottom light of the switch panel flashes, indicating that the machine is about to shut down, please charge it in time before use
- » In case of improper operation, heavy load or blocking, 5 lights will flash at the same time. If the wrong operation is not corrected in time, the machine will shut down automatically in 5 seconds
- » When charging, the 5 indicator lights on the panel turn on in a cycle. When the cycle lights on, when several lights do not circulate, it indicates the proportion of the charge has been completed

Function is introduced

This product is mainly used for family bathroom, kitchen, living room floor cleaning, furniture, automobile and other places, products using high-performance lithium batteries, 390 strong magneto, two speeds, equipped with eight brush head, according to different needs and convenient replacement, USB charging, using international standard TYPE - C charging line, 2 hour quick charge, circuit design has a charge and discharge protection function, Blocking protection function,

low power reminder, charging instructions, five-section LED power display, locking function, the product conforms to the safety certification and environmental certification standards of all countries in the world

Product structure



① Sponge brush

② cloth brush

③ Fiber brush

④ Big brushes

⑤ Brush head holder

⑥ Imitation wool brush

⑦ Tip brush

⑧ small brush

⑨ Charging line

⑩ Telescopic rod

⑪ Connect head

⑫ main body

⑬ Switch button

⑭ control panel

⑮ Indicator light

⑯ sealing plug

Warning

- Please check carefully the fittings before use.
- Do not place the charger in wet conditions.
- Be sure to check that the charging hole is sealed when cleaning.
- Dry the surface in time after cleaning to ensure the product is dry.
- This product must not be used by persons (including children) who are not sound, feel or mentally handicapped or lack relevant experience and knowledge, unless there are persons responsible for their safety who supervise or direct their use of the product. Children should be taken care of to ensure that they do not play with these products.
- Do not use hot water when cleaning products. When using warm water, check that the temperature is too high to prevent scalding.
- Please make sure to use the standard charger for this product.
- Do not touch the rotating parts with your hands or skirts when using.

How to charge

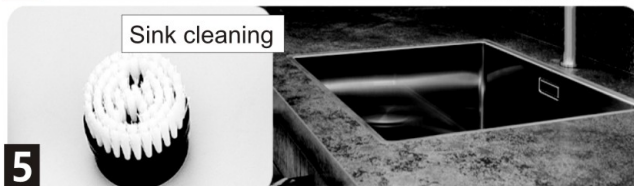
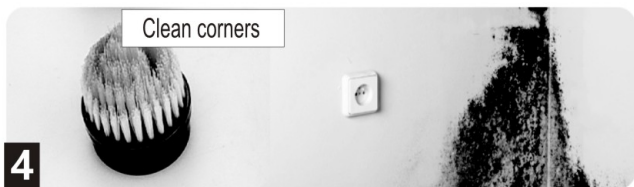
- When the power of the machine is low, the fifth light on the control panel starts flashing.
- Open the sealing plug of the charging port, insert the charging plug into the charging hole using the charging cable matched with the product, and the indicator light on the switch panel flashes alternately.
- The charging time of the product is about 2-3 hours.
- When all the indicator lights are on, it means that the power is sufficient. Pull out the charger and install the sealing plug

Warning: when charging, be sure to use the original charging cable with the USB charger of dv5v1a, and check whether the charger and charging cable are wet



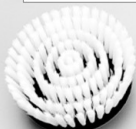
Purpose of accessorie

- Sharp brush: Suitable for the corners, seams, car wheels of a home kitchen, bathroom or fume machine, as well as for cleaning areas that are not easily accessible (Fig 4)
- Small flat brush head: suitable for cleaning small flat areas such as hand wash basin, kitchen sink, furniture etc .(Fig .5)
- Big flat brush head: Suitable for cleaning oil and dirt in bathroom, kitchen, living room, toilet, window, glass etc (Fig6)
- Towed cloth: mainly suitable for living room floor, glass, tea table, car surface cleaning, polishing and other purposes(Fig7)



Bathroom cleaning

6

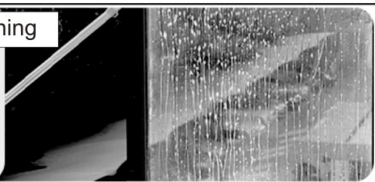
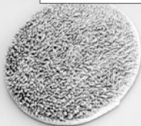


Note: when using 7-9 brush disc, it needs to be used together with brush disc base.

- Imitation wool brush plate is mainly used for polishing, waxing or decontamination of high-grade household, electrical appliances and automobile surfaces
- Fiber brush tray is mainly used in kitchen, stove, range hood and other places that are particularly difficult to clear

Window Cleaning

7



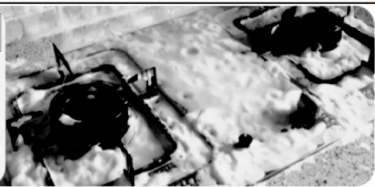
Polish & Wax

8



Especially dirty

9





How to use

- Ensure sufficient power before use.
- Install the appropriate brush head on the host according to the requirements of the place of use.
- Press the on key once for High speed and twice for Low speed.(Fig11)
- During operation, the number of indicator lights on represents the current proportion of remaining power.
- After cleaning, shut down the machine in time, continue to replace the brush head, or clean the product and place the brush head properly.

How to replace the brush head

- When replacing the brush head, the product should be closed and the fingers should be away from the switch key
- Hold the brush head and pull it out vertically. When pulling the brush head, you can gently swing the brush head while pulling, so it is easier to pull it out.(Fig12)
- installing the brush head, align the semicircular groove of the brush head with the convex groove of the brush head connector and mount it vertically.(Fig13)
- When using the mop, press the white side of the mop towards the bottom of the mop tray to start it



Cleaning and maintenance

- Please check if the charge is sealed when cleaning.
- Do not use metal such as steel wire or abrasive cleaner or corrosive liquid (e.g. gasoline or acetone) to clean brush heads and fuselage surfaces.
- You can wash the product under the tap or drive the product to high-end, and automatically clean the brush into the water.
- After the cleaning is finished, it is necessary to shake the moisture on the dry product and wipe it with dry cloth.

Environment protection

- Do not use more than 60° of hot water to clean the brush head and products.
- When disposing of products, please do not pile them up with general domestic waste; they should be handed over to the manufacturer's designated recycling centre. This is good for environmental protection.
- Built-in rechargeable batteries contain substances that may contaminate the environment. When products are discarded, make sure the battery is removed and properly handled