



## Behn WALL SCONCE

### INSTALLATION GUIDE



WEARING GLOVES  
IS RECOMMENDED

**DANGER:** ELECTRIC SHOCK RISK. FOR YOUR SAFETY,  
TURN OFF ELECTRICAL POWER BEFORE BEGINNING  
INSTALLATION AND USE CAUTION WHEN INSTALLING.

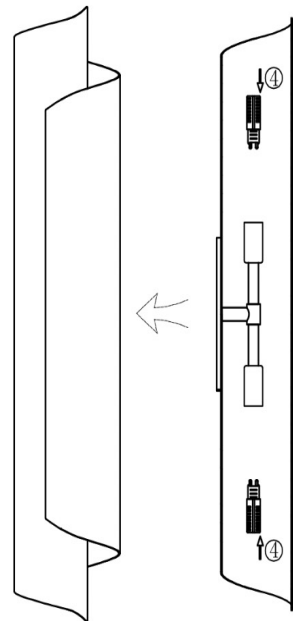
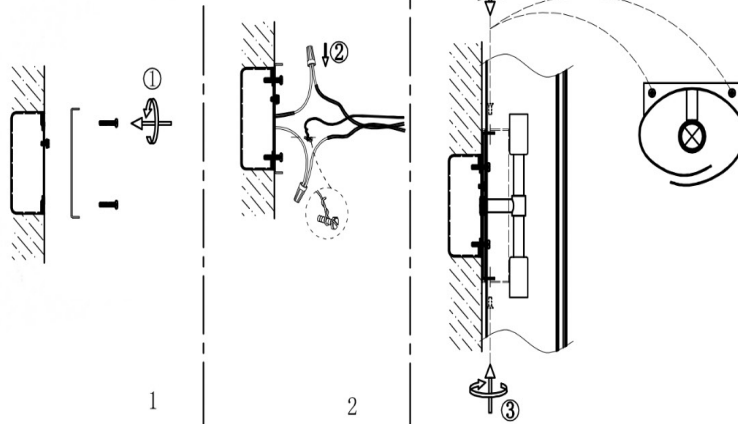
+1 888.399.9905

[www.vault-light.com](http://www.vault-light.com) | [sales@vault-light.com](mailto:sales@vault-light.com)



REF/SKU : BEHN WALL SCONCE

Lamp holder: 2\*G9 5W



### Installation program

1. Install the hanging plate
2. Connect the power cable
3. Fix the backplate with screws
4. Install the prepared light source then turn on the light to check if fixture works

### ATTENTIONS

#### ⓘ WARNINGS

1. Do not disassemble this product
2. Do not strike or shake strongly
3. Do not wipe with ethyl alcohol, gasoline or paint thinners etc.

#### Assembling Attention :

1. Components should be on desk, without any defect or deformation and so on.
2. The bearing of mounting plate should be enough for the lamp, expansion screw is needed for big chandeliers.
3. Once weight of chandelier is over 3kg, it should be fixed with Embedded chain hoist to make sure not pressure to wire
4. Incandescent light bulb can not be installed to combustible hook directly, can not cling to fabric shade, power can not higher than maximum marked on lamp.