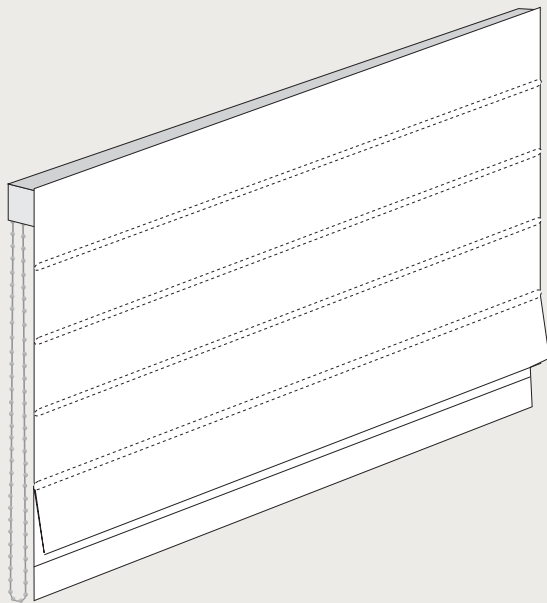


# how to Fit Deluxe Roman Blinds



Spring Bracket



## TOOLS REQUIRED

Pencil  
Screw Driver  
Drill  
Tape Measure

### PREPARATION:

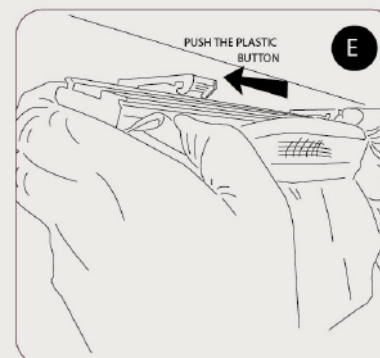
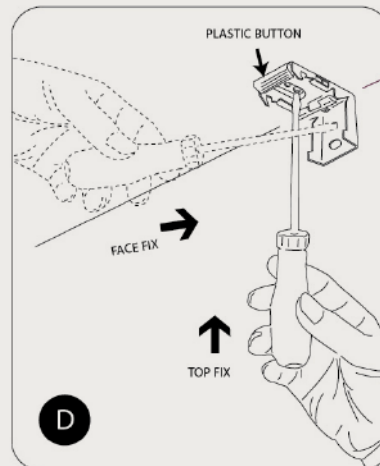
1. Confirm the location of the brackets on the window, options are: Top or face fix as shown in figure [D]
2. Mark with a pencil where the brackets are to be fixed.

### FITTING THE BLIND

1. The first two brackets should be placed as close to the ends of the blind as possible, ensuring that the brackets avoid the control mechanism. Larger blinds will require the remainder of the brackets supplied to be spaced evenly throughout the width of the head rail to ensure sufficient support.
2. After screwing brackets firmly into place, insert the head rail whilst pushing the plastic button as shown in fig [E]. Ensure that the head rail groove is properly placed in the bracket lock, and then release the button.

### OPERATION

Pull gently on the control chain to raise and lower blind to desired level.



## WARNING

Young children can strangle in the loop of pull cords, chains and tapes that operate window coverings. They can also wrap the cords around their necks. To avoid the risk of strangulation and entanglement, keep cords out of the reach of young children. Move beds, cots and furniture away from window covering cords.