

In this pack

Domaines Schlumberger
Pinot Gris Grand Cru Kessler 2014

J Moreau & Fils
Chablis 1er Cru Mont de Milieu 2016

Yangarra
Roux Beauté Roussanne 2016

Soul Growers
The Defiant Mataro 2016

Le Petit Caillou
de Ducru Beaucaillou St Julien 2014

Willow Bridge
Black Dog Shiraz 2014

Your pack is valued over \$789!
You only pay \$680

All wines offered are covered by The Wine Collective's Guarantee of Quality. If after tasting a bottle or two you are dissatisfied for any reason, call your friendly Wine Advisor on 1300 723 723 to discuss options for refund or replacement. The Wine Collective supports the responsible service of alcohol. Liquor Act 2007 – it is an offence to sell or supply to or obtain liquor on behalf of a person under the age of 18 years. Savings based on normal sell price. Freight cost not included. Please visit www.thewinecollective.com.au for freight prices or ask your Wine Advisor when you order. Lic No. LIQP880014817.

Prices valid while stocks last. Cellaring potential is a guide only and may change depending on storage conditions. Suggested cellaring potential applies from the time of publication.

Free wine!

Refer a friend to a wine plan and
we'll give you a FREE case of wine



Get your free case in three easy steps!

Step 1: Call 1300 723 723

Step 2: Refer your friends to join a wine plan

Step 3: Once your friend joins we'll send you a FREE case of wine

Terms and conditions apply. Not available in conjunction with any other offer.

Enjoyed the wine in this pack?



Re-order today!

Did you love these wines so much that you've found
there's none left? Never fear!

You can re-order any of the wines in your wine plan from
www.thewinecollective.com.au or by calling 1300 723 723.

Terms and conditions apply. Wines are only available while stock lasts.

August 2019 Mixed

Exclusive & unique wines | Food & wine advice
Wine education | Value for money

Valued over
\$789!

You only pay
\$680!

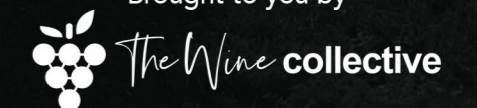
Decanter Collection

Excite your tastebuds with this wonderful selection of wines,
carefully selected for their food-matching compatibilities,
so you can take your dining experience to the next level.

Code ITM27312 | \$680 per dozen

thewinesociety

Brought to you by





Domaines Schlumberger Pinot Gris Grand Cru Kessler 2014



Domaines Schlumberger is a family estate established in 1810. At present it is run by two generations working side by side: Alain Beydon-Schlumberger, 6th generation, Séverine and Thomas Schlumberger, 7th generation. All of their wines are estate-grown and produced on site. With an exceptional location, situated on the steep hillsides of the Vosges, the estate benefits from the best exposures where the incline of the slopes can reach 50°. The vineyard's topography and soil composition means yields are much lower than average for the region - only 45 hl/ha for the entire domaine. Even today, all vineyard work is carried out with teams of horses, who can navigate the steep slopes. 30 hectares are farmed biodynamically, to ensure great quality wines for the future generations.

Region : Alsace, France

Notes : A ripe and candied nose with aromas of bright, yellow fruits: quince, mirabelle plum, honey and a light smokiness. Time in the glass brings a heady mix of white blossom and golden apples. The palate is ample and plush with a luscious sweetness and creamy mouthfeel. Botrytised grapes bring an apricot marmalade character which underpins the yellow fruit and honeyed tones, all balanced by a linear acidity. The liveliness is pure and precise. A masterpiece.

Cellar : Cellar up to 2022

Food match : Foie gras with caramelised apple

Alc/Vol : 12.2%



Yangarra Roux Beauté Roussanne 2016



The Yangarra philosophy centres around producing wines using Rhône varieties grown solely on their single-vineyard estate. Yangarra's combination of rare geologies, moderate altitude, abundant sunshine and cool evening breezes make it perfect for growing varieties, such as this Roussanne, that thrive in these moderate maritime environments. Roux Beauté began as a winemaking trial in 2013, with the intention of growing and making an extraordinary Roussanne. The grapes are fermented and matured on their skins in big 675L ceramic eggs. The resulting wine is luxuriously textured, and showcases the varietal flavours of Roussanne and the distinctive characters of the site. It will age wonderfully given time in the cellar. "Roux", the French word for 'russet', is the likely part origin of the name Roussanne, and refers to the reddish tinge that forms on the skin of the yellow-green fruit. The name "Beauté" captures Yangarra's intention to beautifully express the Roussanne varietal and its site.

Region : McLaren Vale, SA

Notes : "Beautiful white wine. It crackles, it floats and it charms. Spice, florals, stone fruit and mineral. There's grip to the finish but it doesn't gather; it's exquisitely well pitched and balanced. A class. Headly with florals but taut and controlled."

Campbell Mattinson.

Cellar : Cellar up to 2025

Food match : Lobster bisque

Alc/Vol : 13.5%



Le Petit Caillou de Ducru Beaucaillou St Julien 2014



Château Ducru-Beaucaillou was classified as a Second Growth in the 1855 classification of the Medoc and is widely considered to be one of the so-called 'Super Seconds' that can challenge the great First Growths of Bordeaux - Latour, Mouton-Rothschild, Lafite-Rothschild, Haut-Brion and Margaux - in outstanding years. The Château is currently owned by the Borie family, who have held it for three generations spanning more than 60 years. The property sits on a gravel mound overlooking the Gironde estuary, and garners its name from the 'beautiful large stones' that are found on the property. The vineyard is planted predominantly with Cabernet Sauvignon with a small percentage of Merlot and Cabernet Franc. Le Petit Caillou is Château Ducru Beaucaillou's third wine and shows that classic Bordeaux doesn't need to be ridiculously expensive, even when it comes from a famous address in Saint Julien.

Region : St Julien, France

Notes : "A charming rendition; the lifted bouquet shows blackcurrant, spiced cherry, thyme, game and nutmeg characters, leading to a beautifully weighted palate that is finely textured and rounded. It is elegant and wonderfully composed with fine, chalky tannins, finishing long and delightfully dry." Sam Kim.

Cellar : Cellar up to 2025

Food match : Roast beef

Alc/Vol : 14.0%



Hello Decanter wine club member,

It's hard to believe that six months have passed since your last case!

It feels like only yesterday I was introducing myself whilst extolling the virtues of Sancerre and Hunter Valley Shiraz. I hope the intervening months have provided you with plenty of opportunities to enjoy some amazing wines, especially now that winter is well and truly upon us.

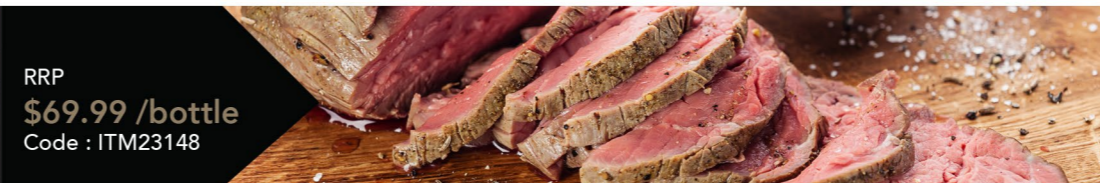
Once again I've tried to include a mix of interesting finds and classic regions for you to enjoy through these colder months. Which is why I snapped up the allocation of **Domaines Schlumberger Pinot Gris Grand Cru Kessler 2014** for Decanter subscribers. We tasted the entire Schlumberger range during an in-house Alsatian tasting, and all of the wines were incredible, outshining two other internationally renowned Alsace producers. For this wine, savour the notes of of honey and marmalade overlaid by mouthwatering acidity, which keeps the palate refreshing and off-dry, rather than sweet. There are so many layers to this wine, it's definitely one to be sipped slowly.

Another wine I know you'll love is the **Willow Bridge Black Dog Shiraz 2014**. Jeff Dewar, the owner of Willow Bridge is still awaiting his score for this vintage from James Halliday's Wine Companion but four of the previous five vintages have all scored 96 points, with only the 2009 vintage scoring 95, which is a magnificent achievement. The Black Dog Shiraz is Willow Bridge's flagship wine. Made from estate grown fruit, handled fastidiously and matured painstakingly in new (25%) and older french hogsheads, it's powerful with enough depth and concentration to age for years to come. Or, if like me, you can't resist opening such a beautifully bold and complex wine on a particularly chilly evening, then do be sure to decant it, so as to allow the wine to fully open up.

I hope you enjoy your August pack. If you have any feedback, as always, please don't hesitate to send me an email: wineplans@thewinecollective.com.au

Best regards

Sarah Linhart
Wine Buyer



RRP
\$59.99 /bottle
Code : ITM26462

RRP
\$69.99 /bottle
Code : ITM27307

RRP
\$69.99 /bottle
Code : ITM23148



J Moreau & Fils Chablis 1er Cru Mont de Milieu 2016



In 1814 Jean-Joseph Moreau, a young cooper, married a local winemaker's daughter and inherited the oldest producer of Chablis. Driven by a passion for the vine and traditional values, he ran the business incredibly well and quickly became one of the most important producers of wine in Chablis. He was a pioneer in the region and, building on his local success, established the house's presence on the international market, thanks to its signature white wines that are complex, elegant and precisely balanced. The most recent of Chablis premier crus, Mont de Milieu, was established in 1986. Like the rest of the wider Chablis appellation, the main bedrock comes from the Kimmeridgean age (150 million years ago). The 34 hectares of the Mont de Milieu vineyards are located on the right bank of the River Serein in the communes of Fleys and Fyé, which means their geographical situation is comparable to those of the grand crus and its south/south-east aspect guarantees extremely good sunshine.

Region : Chablis 1er Cru Mont de Milieu, France

Notes : Lovely nose of white stonefruits and citrus with blossom top notes, honey characters, a touch of nuttiness and a distinct, stony minerality underlying it all. The palate is elegant and wonderfully linear with a clean, citrus line running from front to back. It's fleshed out towards the end with more stonefruits and honeyed nut tones, but it's the mineral-laden acidity bursting through the finish that keeps you coming back. Great line and length.

Cellar : Cellar up to 2025

Food match : Scallops with black pudding

Alc/Vol : 13.0%



Soul Growers The Defiant Mataro 2016



Soul Growers was born out of a friendship between four friends. Paul, Tom, Leigh and Stu had worked together in the corporate world but dreamed of a future making uncomplicated, handmade wines. From this idea Soul Growers was born. Their goal is to let the vineyards they work with show in their wines, emphasising the regional and varietal flavours of their beloved Barossa Valley. All of the grapes for this Mataro come from vines that are 40 - 70 years old, ensuring the resulting wines are extremely concentrated.

Region : Barossa Valley, SA

Notes : "From old vines in Marananga and Vine Vale, whole berries open-fermented, 7-10 days on skins, basket-pressed, matured for 19 months in used French hogsheads. Very good colour, full and bright; spicy forest berries on the bouquet lead into a medium-bodied palate that has remarkable drive, precision and freshness to its dark berry/cherry fruits and ripe tannins." James Halliday.

Cellar : Cellar up to 2030

Food match : Cassoulet

Alc/Vol : 14.0%



Willow Bridge Black Dog Shiraz 2014



Two hours south of Perth in the Ferguson Valley sub-region of Geographe is where you'll find Willow Bridge Estate. Jeff and Vicki Dewar bought the vineyard in 1996 and enlisted the expertise of Kim Horton and Dougal Herd to create premium wines that are exceptional value for money. In 1997 they planted 100 acres of wine grapes - and held their breath. Then another 50 acres were planted in 1998, making Willow Bridge the biggest planting in what was then a largely unknown region. The vineyard is situated high on the western watershed of the Darling Ranges, with the vines enjoying spectacular views over the coastal plain, and across the waters of Geographe Bay to Cape Naturaliste. The vineyard is 25km from the coast and receives the cooling afternoon sea breeze during summer. At an elevation between 230 - 280m, the estate is generally two degrees or more cooler than the coastal plain, with ripening times similar to the cool southern parts of the neighbouring Margaret River wine region. The fruit is sourced from a gravel clay block, north east facing, backing on to the Wellington Forest, with painfully low yields, but producing a wine of intense varietal character.

Region : Geographe, WA

Notes : Deep bouquet, dried plums, earthy beetroot and scented spice. Powerful and complex, black plum fruit intermingled with complex tertiary characters of dried nuts, spice and chocolate derived from ageing.

Cellar : Cellar up to 2024

Food match : Braised lentils with vegetables

Alc/Vol : 14.0%



RRP
\$69.99 /bottle
Code : ITM27773

RRP
\$59.99 /bottle
Code : ITM25369

RRP
\$64.99 /bottle
Code : ITM23148