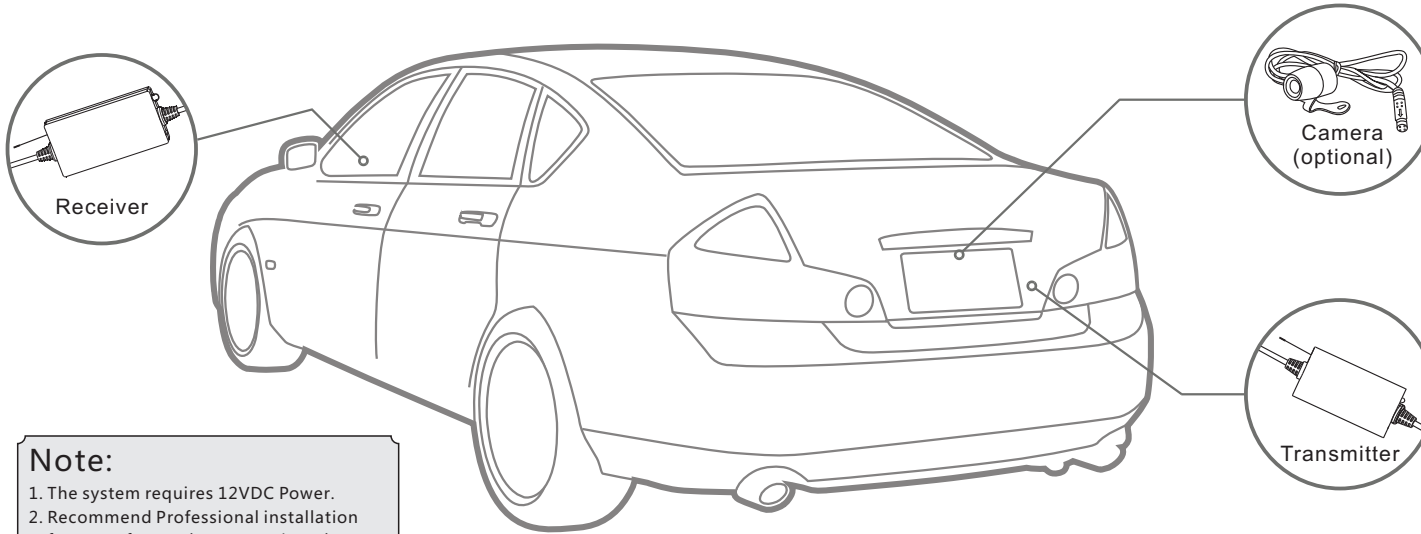


Model: VTX300D



Note:

1. The system requires 12VDC Power.
2. Recommend Professional installation from an aftermarket customizer shop.
3. Avoid high temperature and high pressure location when wiring.

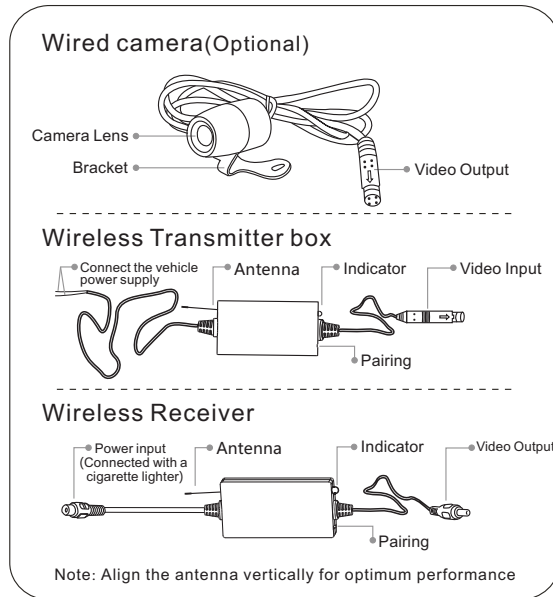
① Packing List:

- Wireless transmitter box: X1
- Wireless receiver: X1
- Waterproof case: X1(pre-assembled on the TX box)
- Cigarette Lighter Adapter: X1
- Power Supply Cable: X1
- Warranty Card x1
- Registration Card x1
- User's Manual x1

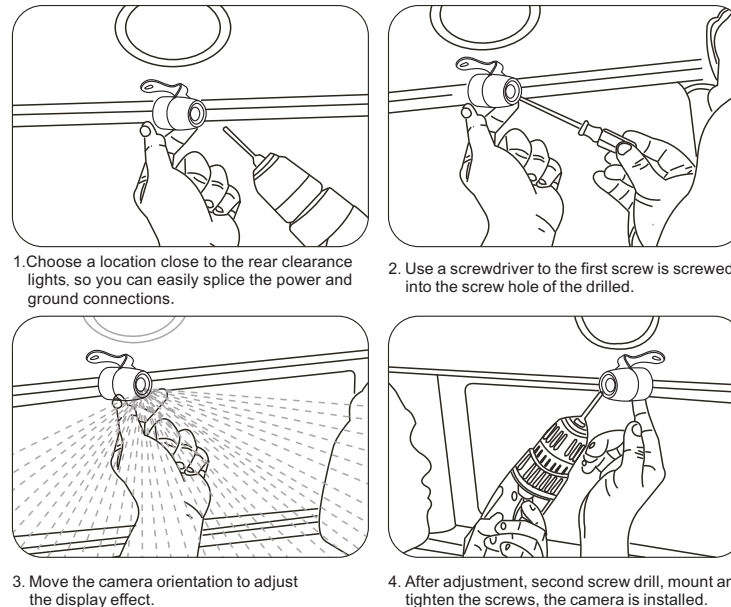
② Specifications:

Transmitter	
Transmission Frequency	2400~2483.5MHz
Data Bandwidth	4.4 (20dB BW)
Modulation/Demodulation Mode	16QAM, QPSK, BPSK
Transmission Power	+14dBm@16QAM EVM 5%, +18dBm@QPSK EVM 8%
Receiving Sensitivity	-72dBm@QAM, -85dBm@QPSK
Unobstructed Effective Range	50M (MAX.)
Power Supply	DC 12~24V
Consumption Current	DC 12V@250mA; DC24V@150mA
Dimensions (W X D X H)	66 X 35 X 12mm
Weight	60克
Receiver	
Transmission Frequency	2400~2483.5MHz
Data Bandwidth	4.4 (20dB BW)
Modulation/Demodulation Mode	16QAM, QPSK, BPSK
Transmission Power	+14dBm@16QAM EVM 5%, +18dBm@QPSK EVM 8%
Receiving Sensitivity	-72dBm@QAM, -85dBm@QPSK
Unobstructed Effective Range	50M (MAX.)
Power Supply	DC 12~24V
Video output	1Vp-p±0.2
Dimensions (W X D X H)	66 X 35 X 12mm
Weight	60g
Operation Temperature	-10°C~+50°C/14°F~122°F
Operation Humidity	15%~85%RH

③ Product Structure:



④ Installation Wired Camera:



⑤ Wiring diagram and the pairing setting:

