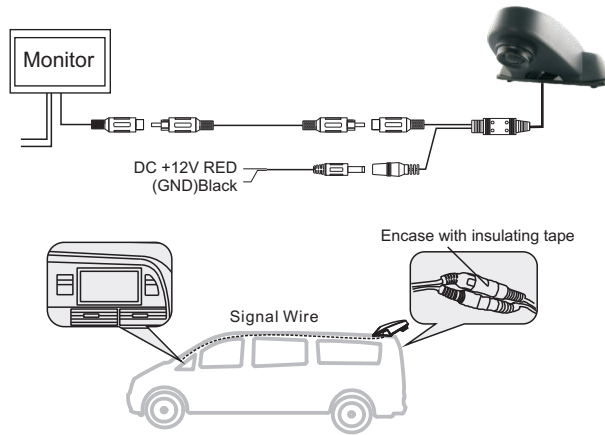


size:105x148mm

3.Installation

The installation and position of the camera



The effect of camera's installation



3

BOYO[®]

VISION

VTS30

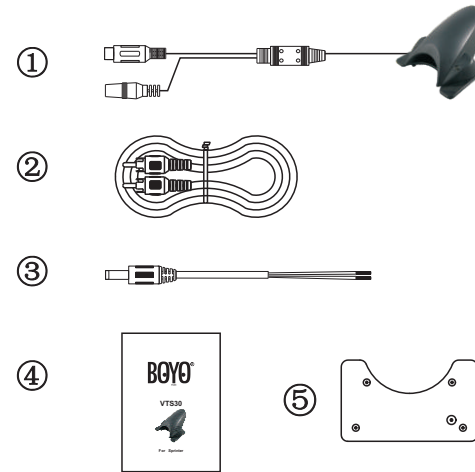


For Sprinter

1.Specification

Technical term	Technical Parameters
Images sensors	SONY CCD
Power Supply(DCV)	DC 9V-16V
Current Consumption	57 mA
Power	0.7 W
Effective pixels	768(H)X494(V)NTSC, 752(H)X582(V)PAL
Electronic shutter	1/60 (NTSC)1/50(PAL)-100000s
Minimum illumination	0.1 Lux
S/N Ratio	48 dB
Resolution(TV Lines)	600 TV
TV System	NTSC / PAL
Lens Angle(Deg.)	D=130°± 10° H=90°±5° V=68°±5°
Video output	1.0Vp-p 75ohm
IP rating	IP 67
White Balance AUTO	AUTO
AGC	AUTO
BLC	AUTO
Operating Temperature(° F)	-31° F~167° F

2.Accessories



Sequence Number	Name
1	Camera
2	Signal Wire (8M)
3	Power Line (3M)
4	User's manual
5	Positioning Sheet