

1. BILL OF MATERIAL



Camera



Manual



Harness



24' Male to male RCA cable

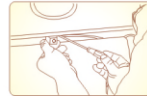
2. SPECIFICATION

- 13mm Micro Camera
- 1/4inch CMOS color image Sensor
- 500 VTL Horizontal Resolution
- 648(H)X488(V)Effective Pixel Resolution
- 170°Wide Viewing Angle(D)
- IP68 Waterproof Rating
- Selectable Reverse/Non-Reverse Image
- Selectable On/Off Parking Guide Lines
- Dual Mounting - Bracket/Flush Mount

3. Installation Tip



1. Align the camera to the desired location. Make sure it is a safe area to drill into.



2. Tighten the first screw into the body with screw driver



3. Adjust the camera's position according to the actual display on the monitor

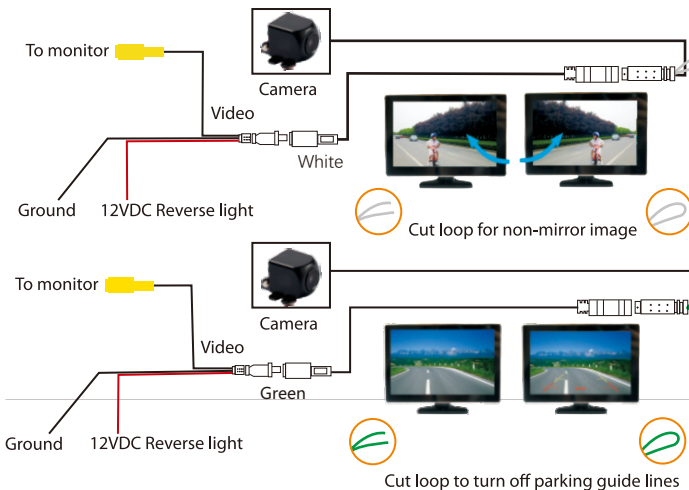


4. Align and drill the second screw to the body.



5. Make detailed adjustments and the installation is finished.

4. WIRING



If using the camera for front view, cut the white loop to get a non-mirror image.

If using the camera for rear view, do not cut the white loop.

Cut the green loop to turn off the parking lines.