

# BOYO<sup>®</sup>

VISION

## USER MANUAL

### 2.4GHz Digital Wireless Rearview Camera with 7" Color LCD Monitor



#### Foreword

CONGRATULATIONS. The Rearview Camera, when used as described, will give you years of dependable service in your car, truck, RV, or mini-van. We have taken numerous measures in quality control to ensure that your product arrives in top condition, and will perform to your satisfaction.

Model: VTC700R

Version 1.0

Please read this user manual carefully before using this product.

Failure to understand operation procedures may result in injury.

\* The pictures are for reference only, please refer to real subjects.

#### Packing List



\* The pictures are for reference only, please refer to real subjects.

#### Structure

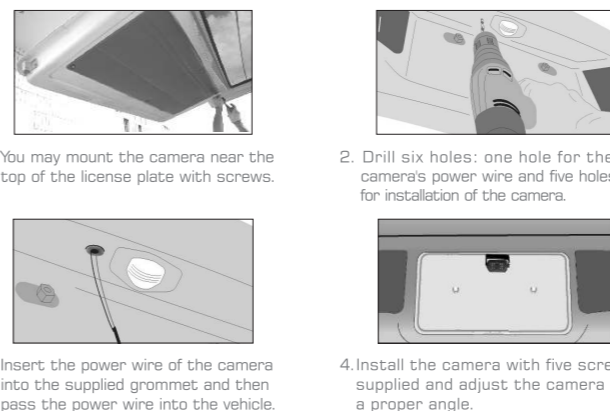


- 1 -

#### Installation

These installation instructions do not apply to all vehicles. They are meant as only as a general guide to big vehicle makes & models. For specific questions, contact your vehicle manufacturer. Consult your local motor vehicle laws on the use of this product. Do not attempt this if you are not knowledgeable with electrical installation practices.

#### camera Installation:

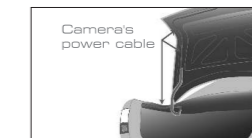


#### Notice

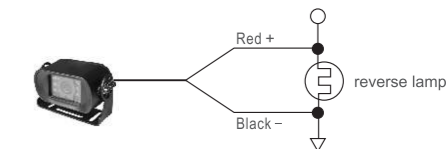
- \* The product is not suitable for mini vehicles. For specific vehicle such as container car or container truck, please consult your local vehicle garage for installation.
- \* Some vehicle may have a hole available to pass the wire through, you do not need to drill a hole.
- \* Before drilling those holes, you must check out and make sure no other components too close to your augille. Before drilling, we strongly recommend you to remove electrical parts or fuel system behind the vehicle door and clear the surroundings to avoid unexpected damages.

- 2 -

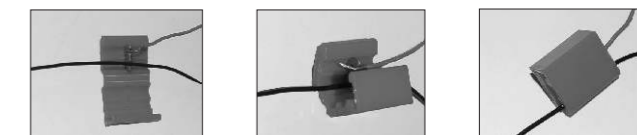
#### camera power wire connection:



- Once you have located the reverse light circuit, you need to route the power wire to that location. You must securely fasten the power wire to prevent it from being caught on by vehicle component such as the trunk hinge. Never route the cable outside the vehicle.



- The camera is equipped with Reverse Voltage Protection, please make sure that the Red wire is connected to positive (+) and the Black wire is connected to negative (-).



- Wrap In-Line wire connectors over the camera power wire.

- 3 -

#### monitor installation:



- Fastening the suction holder to the interface of the monitor back.



- Peel off the backing paper of the suction holder and suck it on to the front window of vehicle.



- Connect power of the monitor. There are two methods as below:  
A: Reference to the connection way of the camera power wire, and connect the power supply cable correctly.  
B: Use the cigarette lighter adapter to connect the power socket of the monitor, then insert it into the socket of vehicle.



- Power on and the power indicator lights blue, adjust brightness, contrast and orientation for image of the monitor.

#### the whole diagram of installation position:



- 4 -

#### Operations

- Press the POWER button on the monitor for 3 seconds, the power indicator will illuminate.
- This equipment has paired successfully out of factory. If not display image you need to pair again.  
Method: screw the metal button of camera back into the upside hole, Then press the PAIRING button for 3s to pair the frequency signal in 30 seconds. If the pairing is successful, you take away the metal button and place it into the underside hole.



- If the image on the LCD is unclear, please adjust contrast brightness and mirror by toggling the buttons on the monitor.
  - \* Contrast Control: the 5 levels of LCD contrast can be adjusted by pressing the CONTRAST button.
  - \* Brightness Control: the 5 levels of LCD brightness can be adjusted by pressing the BRIGHTNESS button.
  - \* There are four different views for the monitor. If the image does not match your rear view mirror, press the MIRROR button on the monitor to change the image until it matches your rear view mirror.



These different views allow you to mount the camera and/or monitor with either right side up or upside down and still display the image correctly on the monitor. The image displayed should match your rear view mirror. After testing the unit, fully tighten the license plate bolts.

#### Notice

- \* User could press the CONTRAST button for 4 seconds to renew the default factory display.

- 5 -

- Video are able to be output from the monitor to bigger display device, such as TV or other screen with a RCA video input, when the connection is successful, the message will display on the monitor.



Switching to NTSC TV system...

- \* If the image does not display on TV, Please check the video cable is fully inserted into the monitor.

#### Specifications

Items	Value
Imaging Sensor	CMOS
Total Pixels	640 × 480
Horizontal View Angle	85°
Transmission Frequency	ISM 2,400-2,483MHz
Minimum Illumination	0 Lux (IR ON)
IR Night Range	3m
Modulating/Demodulating	16QAM, QPSK, BPSK
Power Supply	+12/+24VDC
Consumption Current (Max.)	150mA (IR OFF) & 230mA (IR ON)
Dimensions (W × D × H)	96 × 52 × 61 (mm) (Excluding Bracket)
Approx. Weight	440g
LCD Screen Type	7" TFT-LCD
Transmission Frequency	ISM 2,400-2,483MHz
Screen Resolution	800 × 480
Video System	NTSC/PAL
Received Sensitivity	-72dBm@GAM, -85dBm@GAM
Consumption Current (Max.)	600mA
Dimensions (W × D × H)	214 × 26 × 157 (mm)
Approx. Weight	518g (Excluding Bracket)
Power Supply Voltage	DC 10-32V
Unobstructed Effective Range (Matching)	<130m
Operating Temperature	0°C~+40°C
Storage Temperature	-20°C~+60°C
Operating Humidity (Max.)	15%~85%RH

- \* The actual transmission range may vary according to the weather, location, interference and building construction.
- \* All the specifications are subject to minor change without prior notice.

- 6 -

#### FCC Information

This device complies with part 15 of the FCC Rules. Operation is subject to the following two conditions:

- (1) This device may not cause harmful interference.
- (2) This device must accept any interference received, including interference that may cause undesired operation. Changes or modifications not expressly approved by the party responsible for compliance could void the user's authority to operate the equipment.

#### Cautions

- The apparatus shall not be exposed to dripping or splashing and no objects filled with liquids, such as vases, shall be placed on the apparatus.
- Turn off the camera/receiver if the system is not in use.
- The camera/receiver can only be completely disconnected from the mains by unplugging the adapter.
- Do not cut the DC power cable of the apparatus to fit with another power source.
- Attention should be drawn to the environment aspects of battery disposal.

#### EU Environmental Protection

Waste electrical products should not be disposed of with household waste. Please recycle where facilities exist. Check with your local authority or retailer for recycling advice.



- 7 -