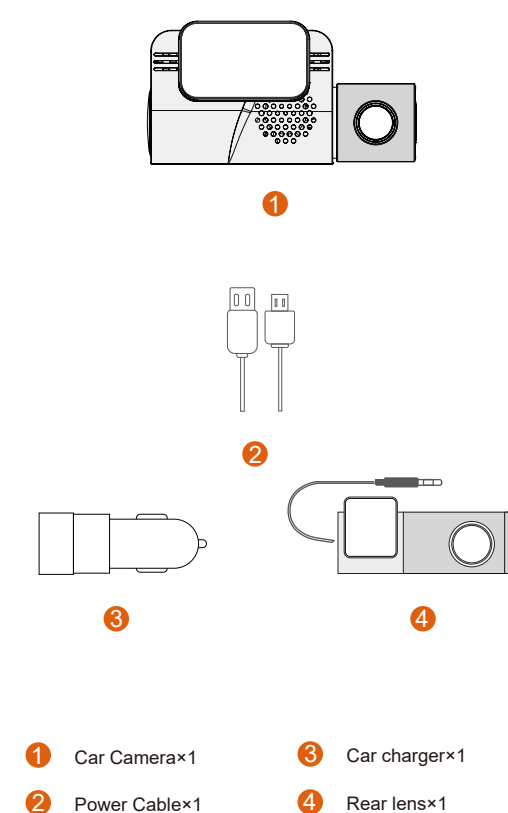


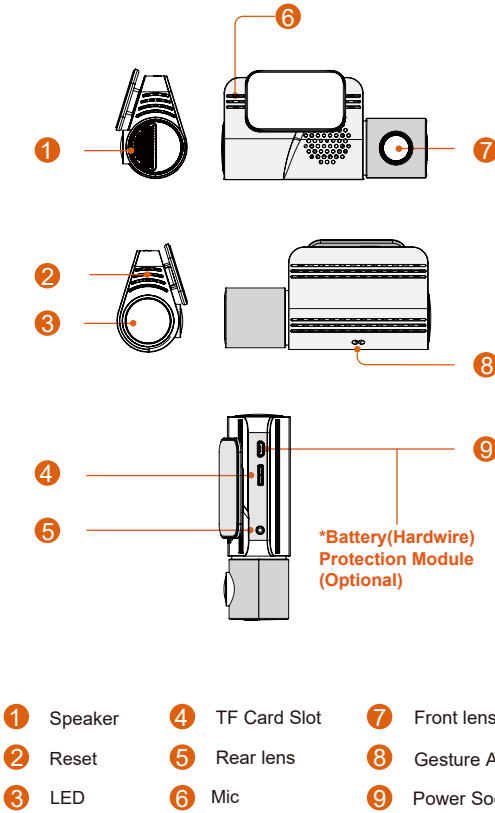
BOYO[®] VISION VTR 219GW User Manual

List



- 2 -

Structure



- 3 -

Install

01 Insert a memory card

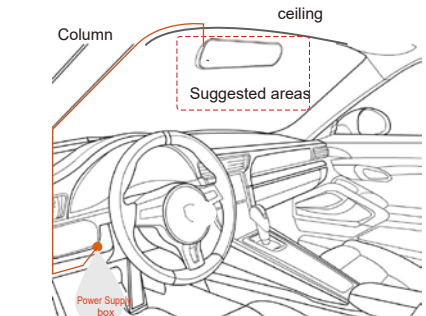
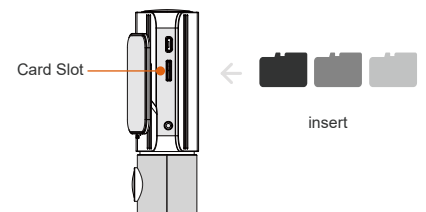
- Select the appropriate memory card. The TF card should be Class10. For better recording, please choose the high quality TF card.
- The memory card is a consumer product. Cause the TF card will be used for a long time, please check it regularly. It needs to be replaced if necessary.
- Do not remove the TF card while saving or getting data. Otherwise, data will be damaged or lead to the malfunction.
- Please ensure that install memory card correctly. Please insert the memory card before starting device. Make sure the memory card is formatted and installed correctly.

02 Fixed device

Please stuck 3M tape shaft bracket into the device. Then fix in the front windshield. It's better to place in front of the rear view mirror to avoid affecting your sight.

- 4 -

	16G	32G	64G	128G
Duration	1.5h	3h	6h	12h



- 5 -

03 Install the power cord

Place the power cord along the ceiling, A-pillar, it can be hid and fixed.

04 Connect the device

Please connect hardwire to power supply box, the device will be worked with alert voice when you start your car. The device will turn off when you park your car.

Do not try to open the shell or repair by yourself. If something wrong, please contact local shop to repair or replace

Use

01 Connect the device to mobile phone

IOS Phone Connection
Download the MK SmartCar cam in the Apple store.
*Noted: The camera must be powered up in order to connect to WIFI in IOS settings.
WIFI Name: M-XXXXX Password: 12345678

- Open the phone settings
- Choose WIFI, Connect to "M-XXXXX"
- Open the App
- Enter to the main interface

- 6 -

Android Phone Connection

Download the MK SmartCar cam in the Google play.
*Noted: The camera must be powered up in order to connect to WIFI in IOS settings. WIFI Name: M-XXXXX Password: 12345678

- Open the phone settings
- Choose WIFI, Connect to "M-XXXXX"
- Open the App
- Enter to the main interface

02 Video download and recording

Playback: Go to the app and click on connect, it will ask you for a code punch 12345678. It should put you on live mode select any videos you would like to view or change any features you want.

Video download: Please click "choose" button via "carcam video" and choose videos which you want to download. Or you can click "download" while playing the video.(ps. Video replay can't happened with video recording at the same time)

03 Angle adjustment

When the device is working normally, you can view the real-time picture via App. Device's angle can be adjusted appropriately for better pictures and videos.

- 7 -

04 Take Photo

Gesture to take pictures: You can just wipe your hands under our gesture area to take pictures when the device is working normally.

APP camera: When the mobile phone connects to the device successfully, you can snap-shot when you are watching your real-time video. What's more, you can also take screen-shot via video reply. Then you can share your pictures or videos to social media.

05 Parking monitor

The parking monitor setting button is on the opening page of App. When you open it, the dash cam begin to detect the car, if the car is static more than 5 minutes and the App is not connected to recorder, the dash cam will start the parking monitor. When the following three situations occur, the dash cam will start normal recording.

- Mobile phone is connected to the App
- Trigger gesture capture
- Continuous vibration > 2 minutes

06 Rear camera

The rear camera should be mounted on the rear windshield driver side with the mini USB also facing the driver side.

- 8 -



07 Reset

Press the reset button for a few seconds to reset camera, the default Wi-Fi password is 12345678.

Parameters

01 Hardware

CPU: AIT 8328Q.
Image sensor: OmniVision 2718.
Lens: 6-glasses, 156° Wide Angle, F1.8.
Wi-Fi: 3G, WIFI 2.4G, GPS.
G-sensor: three-axis accelerometer.

02 Technical Parameters

Front lens video information: 1920*1080P(16:9), @30fps, *.MOV.
Rear lens video information: 1080*720P(16:9), @25fps, *.MOV.
Audio information: 32KHz PCM.
Photo information: JPG.
Storage: Class 10 TF card, up to 128GB.
Working temperature: -20 C ---- 70 C.
Working voltage & current: DC 5V/1A.
Video-processing: image enhancement, LDC correction.

- 9 -



BOYO[®] Vision Tech America, Inc.
1452 E. Valencia Drive
Fullerton, CA 92831
Tel: 888-941-3060

For technical support contact 888-941-3060 or email
info@visiontechamerica.com WWW.VISIONTECHAMERICA.COM