

1 Introduction



- adjust the LCD brightness
- Quick switch to the video image
- quick switch to rear view
- turn off the screen



2 Package

The packing box contains the following accessories. Please confirm:

- 4.3 inch frameless rear view mirror monitor
- Wire harness
- User's manual
- Wire cover
- Remote control

Please check your package box for the items listed above. Please contact the distributor or the agent as soon as possible if there is any damage.

3 Features

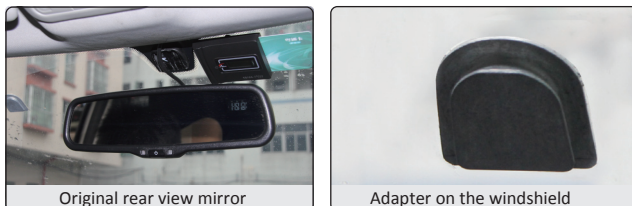
- 4.3 inch LCD display screen
- 2-way video inputs
- Back-up camera display
- Automatic brightness adjustment
- 4.0 mm glass and ϕ 21 mm car factory OEM bracket
- Adjustable guide line

4 Specifications

- Screen size: 4.3 inch
- Display screen: TFT-LCD
- Aspect resolution: 480(H)*272(V)
- Working voltage: 12V
- Working temperature: $-20^{\circ}\text{C}\sim+65^{\circ}\text{C}$
- Signal system: PAL/Auto/NTSC
- Brightness: about 1300cd/m²

5 How to install mirror

5.1 Remove the original mirror



Different cars have different brackets. It depends on your vehicle maker and manufacturer.

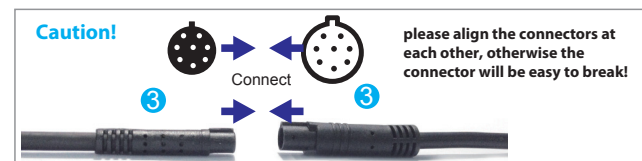
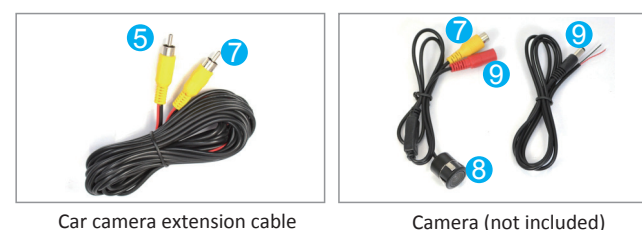
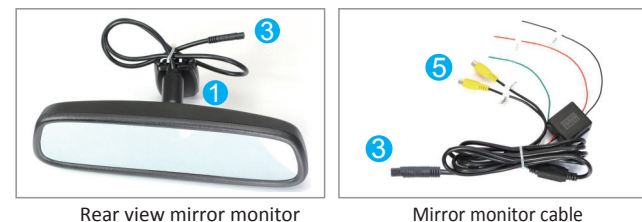
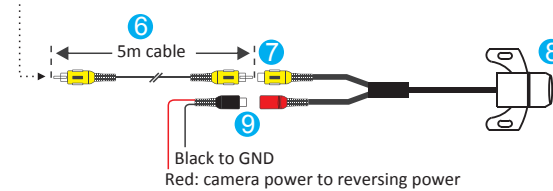
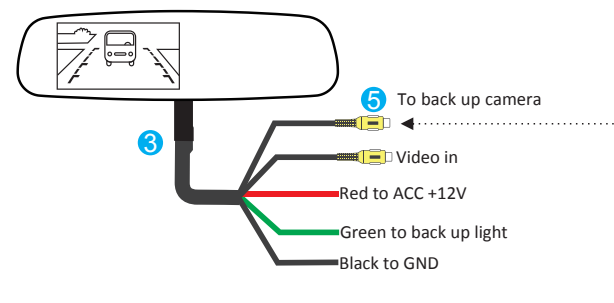
There are many methods to remove the original rear view mirror. However, please don't force the mirror off the bracket. The manufacturer will not be responsible for any damage caused to your car by inappropriate installation of the mirror.

5.2 Install mirror monitor on the base



6 How to wire

After the mirror is mounted, you need to run the cable along the roof lining and down the pillar so you can connect to power and the rear view camera.



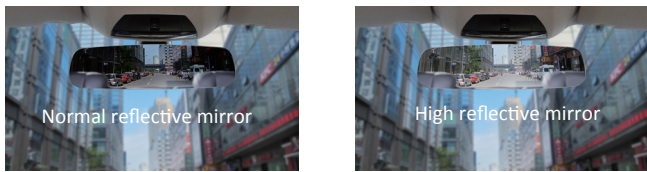
7 Back up camera display

When the car is in reverse, the monitor will automatically display back up camera.

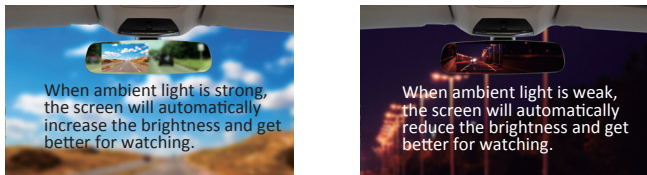


8 High reflective mirror

Clear back up view displayed on high reflective mirror.



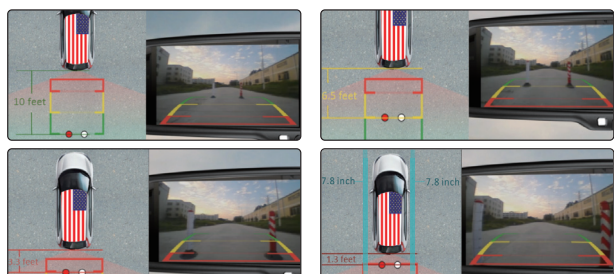
9 Automatic brightness adjustment



10 Adjustable Guide Line

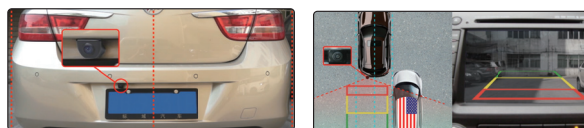
10.1 About guide line

There are three lines (red, yellow, and green) to help drivers estimate the distance from obstacles. Those three lines are displayed on the monitor when the car is reversing. The yellow line is 10 feet away from the car, and the yellow line is 6.5 feet away. The red line is 3.3 feet away from the back of the car, while the closed red line is 1.3 feet away. Please note that there is 0.65 feet distance from the car for reference lines shown below.



10.2 What the regular guide line is

Regular guide lines are fixed although installation sites of camera and car size are different. The fixed guide line is not accurate enough for drivers. There is huge difference between the regular, fixed guide lines, and real guide lines of the car. It may cause accidents when camera is mounted on the left or right side on the back side of the car.



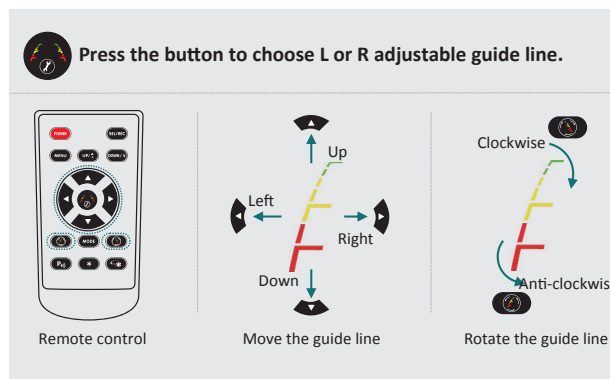
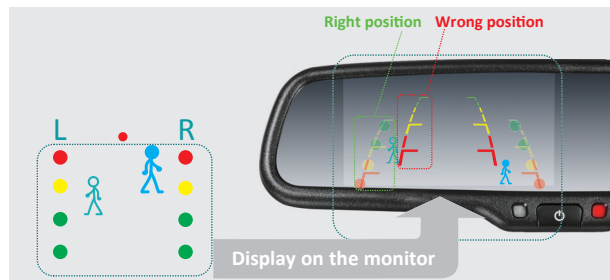
10.3 How to adjust the guide line

According to the site of standard reference line, we can put reference objects such as desks in the back side of the car. Compared with the marked reference objects, we can adjust the sites and angles of two guide lines are displayed on the monitor. You will get the accurate and safety guide lines once it coincides with the reference objects.

Press setting button to enter "guide line adjustment" mode. The system is defaulted to adjust left guide line first. Press the button again to switch to adjust the right guide line.

The up , down , left and right buttons are to adjust the corresponding location of guide lines. The clockwise rotation and contra rotating buttons are to adjust the angles of guide lines. It is easy to operate and calibrate. After finishing calibration, switch the reverse gear to save the information.

Note: keep the remote control 0.5m-1.0m away from rear view mirror when you use the remote to adjust the parking lines.



4.3 Inch Frameless Rear View Mirror Monitor



BOYO
VISION
VTM43FL