

BOYO®

VISION

VTC700AI-4

7" AI AHD Monitor & Cameras System (4 Channel)



Please read all instructions carefully before using, and keep the manual for future reference.

Contents

1. System Accessories	1
2. Installations	2
3. Wiring	4
4. Monitor Buttons	5
5. Remote Control Buttons	5
6. Setting, Configuration and Calibration	6
7. Menu	7
7.1 Time	7
7.2 Display	7
7.3 BSD Smart Drive.....	8
7.3-1 Blind Zone Warning Calibration	8
7.3-2 BSD Setting	10
7.4 Video Playback	10
7.5 System Setting	11
8. Specification	12

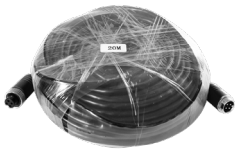
1 System Accessories

Product Features:

- 7" AI monitor to detect vehicles and pedestrians
- 4 Cameras included for front view, rear view, left-side and right-side views
- Warning Beeps when an object is detected in an alarm zone
- Built-in DVR
- 1 x 65ft video extension and 3 x 33ft video extension included



Monitor X 1



65ft extension cord X 1



Adapter cable X 1



33ft extension cord X 3



Camera X 2



Remote control X 1



Camera X 2

Before Installation:

- Please check contents.
 - Perform bench test. Ensure the product is working before installation by connecting the monitor and the camera to 12-24VDC.
 - Perform pre-install test, before mounting the monitor and the cameras. Position the camera and verify the view on the monitor before mounting.
 - For recording, please use the high speed C10 class memory card.
- No repairable components inside. If not working, please request a part replacement.

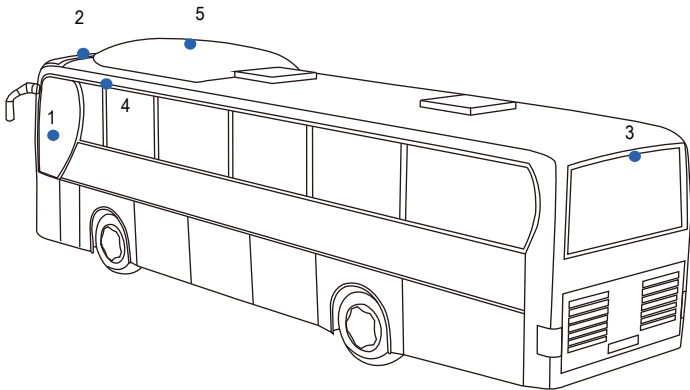
2 Installations

Positioning the monitor and cameras.

The cameras should point toward the blind spots or not easily viewable positions.

The monitor should be placed where it is clearly visible from the driver without any objects obstructing the view. At the same time, the monitor must not block driver's view of the road or surroundings.

An example camera positions:



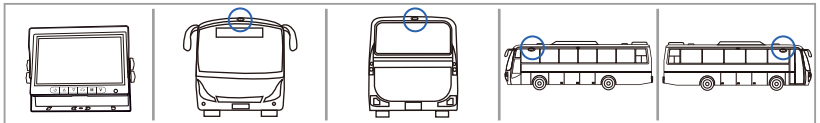
1. LCD Monitor

2. Front Camera

3. Backup Camera

4. Left Camera

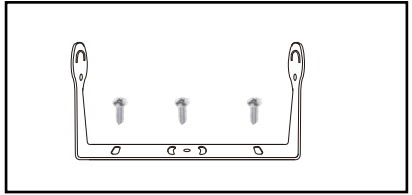
5. Right Camera



Monitor Installation

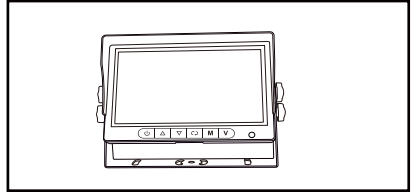
a. Install the monitor bracket using the 3 self-tapping screws.

- Screw in the center.
- Adjust the angle.
- Tighten all screws.



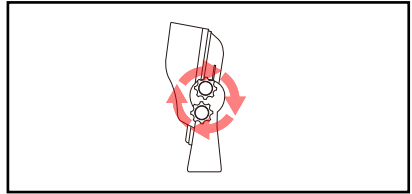
b. Install the monitor using 2 bolts on each sided.

- Do not tighten bolts.



c. Adjust the monitor angle.

- Tighten all bolts.



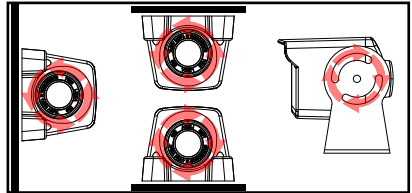
Camera Installation

a. The camera is mounted on the left and right sides

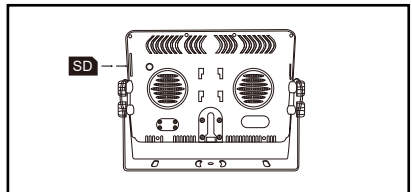
- Rotate camera body for the best position.
- Tighten screws to fix camera.

b. The camera is mounted for front and rear

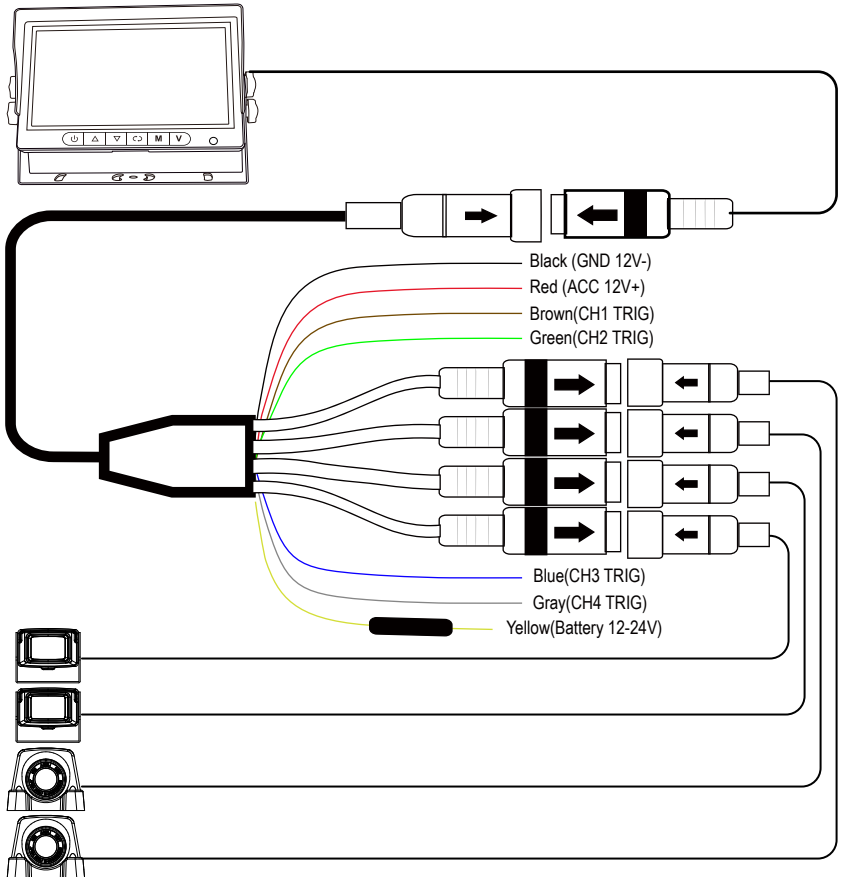
- Adjust the best position up and down.
- Tighten screws to fix camera.



Memory Card Installation



3 Wiring

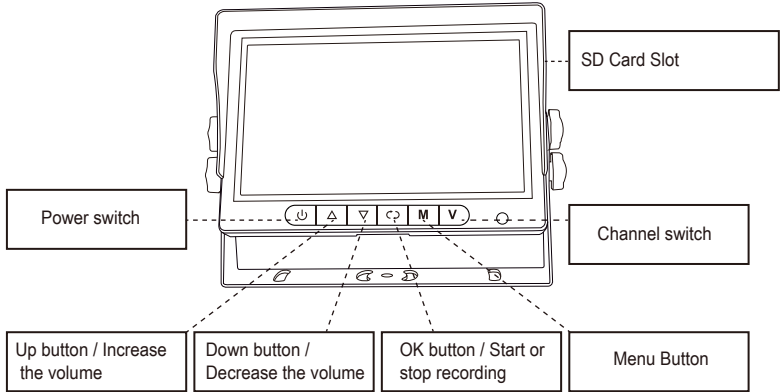


- Connect to reverse trigger (e.g. backup light)
- Connect to left trigger (e.g. the left turn signal)
- Connect to right trigger (e.g. right turn signal)

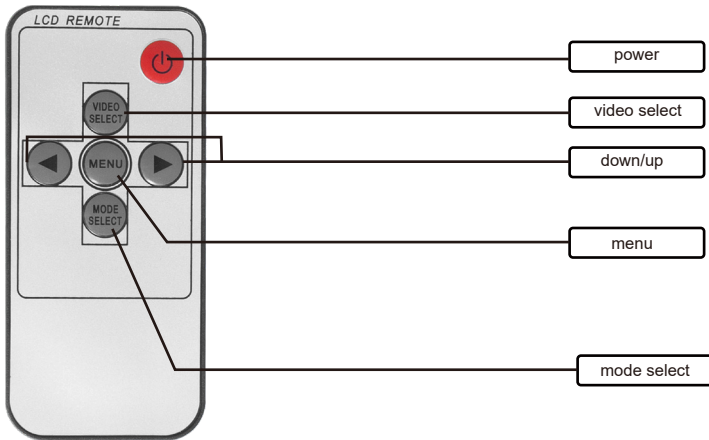
The role of the trigger is to display specific camera. Let us suppose that the monitor is set to display the rear-view camera while driving. If the right is triggered by turning on the right turn signal, the monitor will display the right-side camera in full screen. When the right turn signal is turned off, the right-side camera display is turned off and the rear-view camera is displayed.

4 Monitor Buttons

Operation: The system is operated using the buttons on the monitor or using a remote control

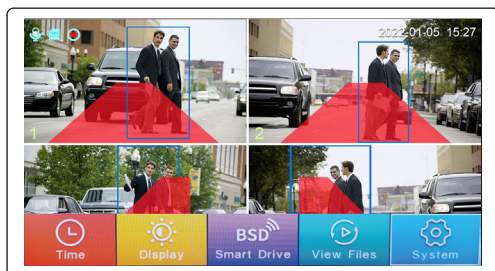


5 Remote Control Buttons



6 Setting, Configuration and Calibration

When a menu button is pressed, the menu bar appears at the bottom of the screen.



2022-01-05 15:27

Time icon



Recording icon: red dot flashing in recording status



Recording icon: Recording status is on



SD card icon: SD memory card working status



Red Trapezoidal area: Blind zone alarm area



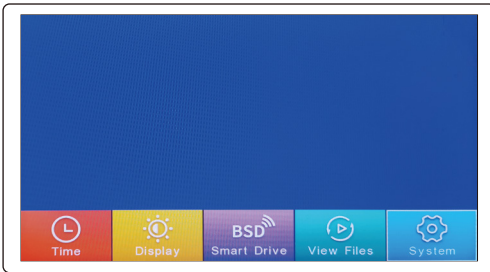
Green rectangular area: Traffic detected



Blue rectangle area: Pedestrian detected

7 Menu

Press Menu button to enter and you will see five menu icons on screen: Time, Display, BSD Smart Drive, View Files and System setting.



7.1 Time

To get to the Time setting, using up, down and OK button to choose your settings, and press Menu button to back to main interface.



7.2 Display

The default value of Brightness, contrast and saturation is 50, The Brightness, contrast and saturation value is between 0-100,



7.3 BSD Smart Drive



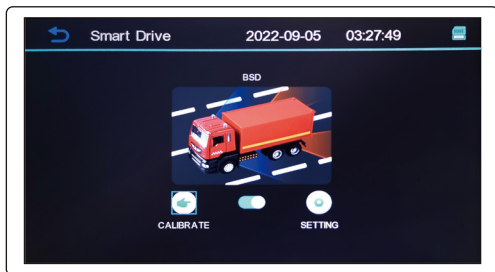
Calibrate: Blind zone alarm range setting



Turn on/off the blind spot alarm




Setting: Alarm tone on/off, sensitivity setting(high, mid, low)



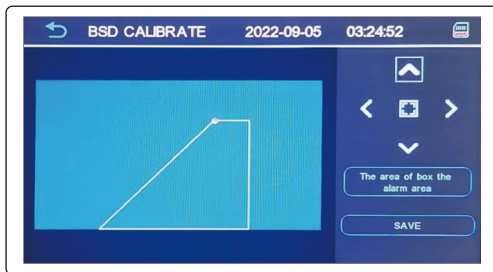
7.3-1 Blind Zone Warning Calibration(left, right, front, back)



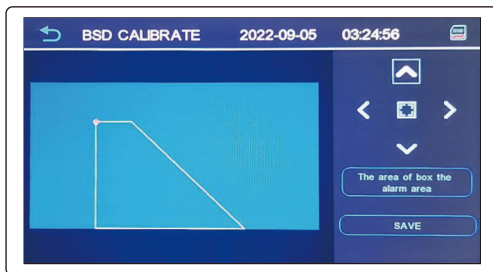
The red point is the current adjustment angle,choosing  to

remove the position of red spot, choosing  to toggle next setting corner,
after setting, click save and exit.

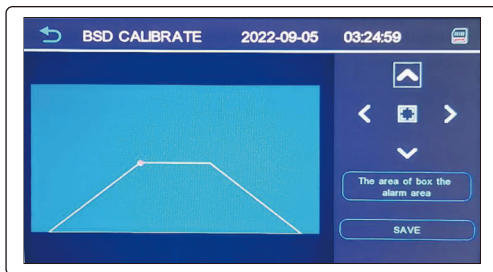
Left blind spot alarm calibration



Right blind spot alarm calibration



Front & back blind spot alarm calibration

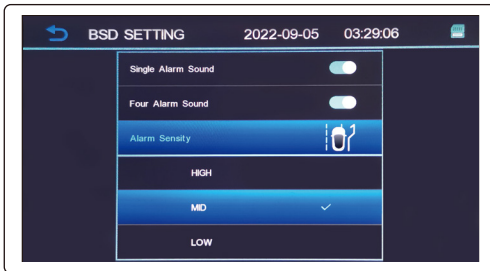


7.3-2 BSD Setting

Single Alarm Sound on / off

Four Alarm Sound on / off

Alarm Sensity: Low/Medium/High selection

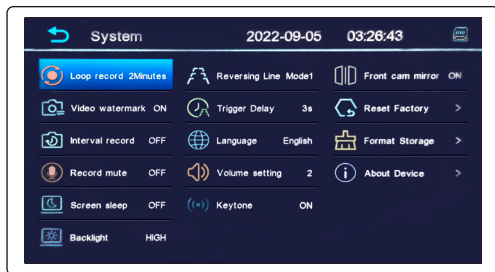


7.4 Video Playback

Click the main menu video playback button to enter the playback menu, choose and view the video file, and swipe up and down in the video file to browse all the single-screen video files.



7.5 System Setting



Keytone	ON/ OFF	Button touch sound
Record mute	ON/ OFF	Audio recording
Loop record	1/2 minutes	1 or 2 min. video clips
Backlight	High/ Mid/ Low	Screen brightness
Video watermark	ON/ OFF	Watermarks can be used for authentication
Volume setting	0/1/2/3/4	Voice prompt volume
Front camera mirror	ON / OFF	
Trigger delay	off / 3s / 6s / 9s	Without a delay the display will coincide with trigger on and off. Note: if the left-side camera trigger is connected to the left turn signal, the left camera display will blink synchronously with the left turn signal light. User should set the turn signal time delay to 3 seconds or more.
Screen sleep	OFF/ 10s / 30s/ 60s	Screen saver mode
Interval record	OFF/ 1H / 12H/ 24H	Even if ignition power is off, the monitor will continue to record by compressed video format, 1fps for 1 second recording
About Device	Software version number	
Reversing line	OFF/ Mode 1 / Model 2/Model 3	Show or hide parking guidelines
Language	English/Japanese/ Korean/Spanish/French	Select display language
Reset Factory	YES / ON	Reset all setting to factory default
Format storage	YES / ON	Erase the memory card

Monitor Specification		Camera Specification	
Screen type	7" IPS TFT LCD	Video Signal	AHD
Aspect Ratio	16:9	Resolution	1288(H)*728(V)
Active Pixels	1280(V) x RGB x 720(H)	Pixel Size	2.8um*2.8um
Resolution (RGB)	1024 x 600	Optical format	1/2.9 inch
Brightness	500cd/m ²	Waterproof	IP69K
Viewing angle	85/85/85/85(L/R/U/D)	Minimum illumination	0.1 lux (Infrared lamps on)
Operating Voltage	DC12V - 24V	Connector	Aerial 4 pin
Power	6W	Night Vision Distance	26 ft
Video Format	H.264	Operation Temperature	-4°F ~ 158°F
Video System	AHD 720 PAL/ NTSC	Power supply	DC12-24V
Response Time(ms)	25ms (typ.) (Tr+Tf)	TV system	PAL/ NTSC
Recording Storage	128G	Max. Frame Rate	30fps
Operation Temperature	-4°F ~ 158°F	AGC	Auto
Spanish French	English/Korean/Japanese Spanish/French	Sync System	Internal
Video input	4 Channel, AV1/AV2 /AV3/AV4	Diagonal viewing angle	170 degrees
Blind Zone Alarm Max Distance	20 feet	Scanning System	2:1 interface

WARRANTY INFORMATION

This one year limited warranty is given to the end-user or the retail purchaser (referred to this warranty as "Original Purchaser") that it will be free from defects in material and workmanship for a period of one year from the date of the purchase of the new product (excluding accessory items such as power cords, cradle, memory card, adaptor, and cables).

This limited warranty does not cover any physical damage to, or misuse of, this product, damage caused by improper installation; improper use; misuse; neglect; repair of cracked scratched, broken or modified cosmetics; or parts that have been altered or removed: damages done by another device used with this product resulting from use of non BOYO brand parts. This warranty is VOID if you purchased this product as used, floor model sample, or refurbished; if the product has been altered or modified in any way (including but not limited to attempted repair without authorization from BOYO-Vision Tech America, Inc. and/or alteration/removal of the serial number).

For warranty information, visit: <https://visiontechamerica.com/pages/get-support>

For technical support:

Call: (888)941-3060

Email: info@visiontechamerica.com

Visit: www.VisionTechAmerica.com