

FAQ

1. Is the signal between the camera and the receiver encrypted?

Yes.

2. How many cameras does the system support?

4 cameras.

3. Why does the frame rate sometimes drop when I am driving?

When driving the signal reception might drop sometimes. This occurs as the signal to the receiver is constantly transmitted from different angles. This is considered normal when transmitting wirelessly.

4. Is the camera water resistant?

The camera is Ip69k classed. This means that the camera is well protected from both dust and humidity. It can be placed outside and can be cleaned using a pressure washer.

5. Can I hear sound from the camera?

No, the camera does not have a microphone.

6. I am using the camera for reversing, how do I mirror the image?

Please see the instructions in the "Operation" section.

7. What do I do if I have bad reception on the LCD-monitor?

Start by reading through the troubleshooting.

8. Will the camera be damaged at very low temperatures?

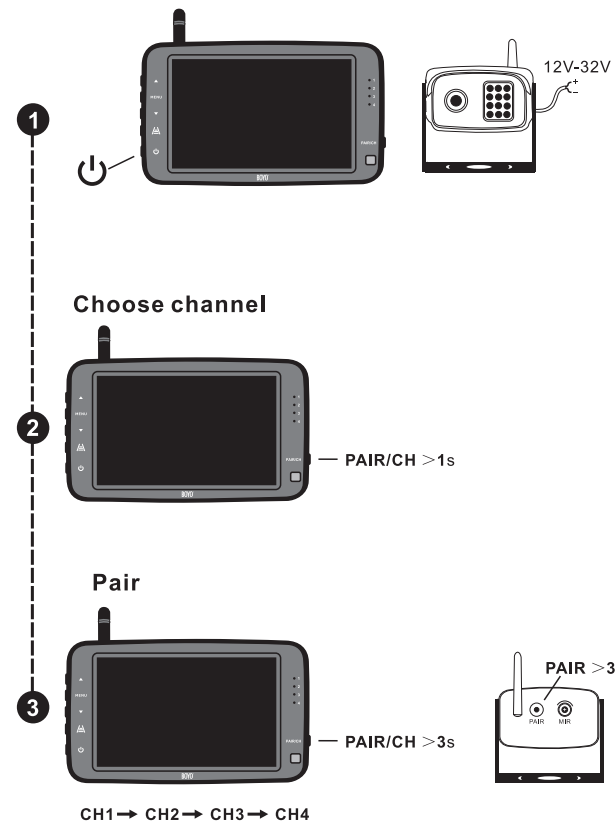
No, at very low temperatures the color of the picture can be affected. At extremely low temperatures, the camera can be turned off. But, when it gets warmer, the camera can regain its functionality.



Vision Tech America, Inc.
1452 E. Valencia Dr.,
Fullerton, CA 92831
Tel: 888-941-3060

For technical support contact 888-941-3060 or email
info@visiontechamerica.com WWW.VISIONTECHAMERICA.COM

EXTRA CAMERA



How to pair or replace a camera?

Press monitor's PAIR/CH button(>3s), when "PAIRING START 50" appears, press the PAIR button of the camera (>3s) until it shows"SAVE DATA".

TECHNICAL SPECIFICATION

MONITOR

MONITOR Panel Size	5" LED Digital Panel
Video System	PAL/NTSC auto
Resolution	800 x 600
Brightness	500cd/m
Contrast Ratio	500:1
Screen Mode	16:9
Field of View	Top: 50°, Bottom 70°, L/R 70°
Audio	NO
Dot Pitch	0.077(W) x 0.231(H)mm
Active Area	110.000(W) x 62.832(H)mm
Power Input	DC5-32V
Operating Temperature	-68F to approx. 158F
Operating Temperature	-22F to approx. 176F
Frequency	2400-2483.5 MHz
Transmission Type	Digital Wireless
Video Input	4 Channel
Video Source	1vp-p75Ω
Pairing	CH1 Camera Paired
Power Consumption	About 4W
Transmission Distance	328 ft

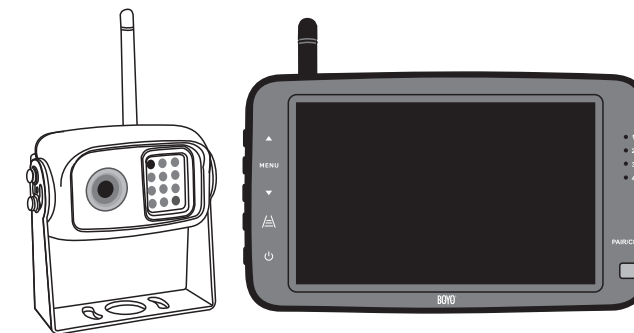
CAMERA

Sensor	1/3" SHARP CCD
Effective Pixel Array	512x492
Sync. System	700 TV LINES
Minumination	0.1 LUX
Working Current	260mA
Optical Format	1/3 inch
Camera Correction	R=0.45-1.0
Lens	F=3.6 mm
Viewing Angle	110°
Waterproof Rating	IP69K
Power Consumption	About 3.5W (IR on)
Power Input	DC12 -32V
Operating Temperature	-68F to approx. 158F
Operating Temperature	-22F to approx. 176F
Frequency	2400-2483.5 MHz
Transmission Type	Digital Wireless
Transmission Distance	328 ft
S/N Ratio	More than 48dB
White Balance	Auto
IR Control	Auto



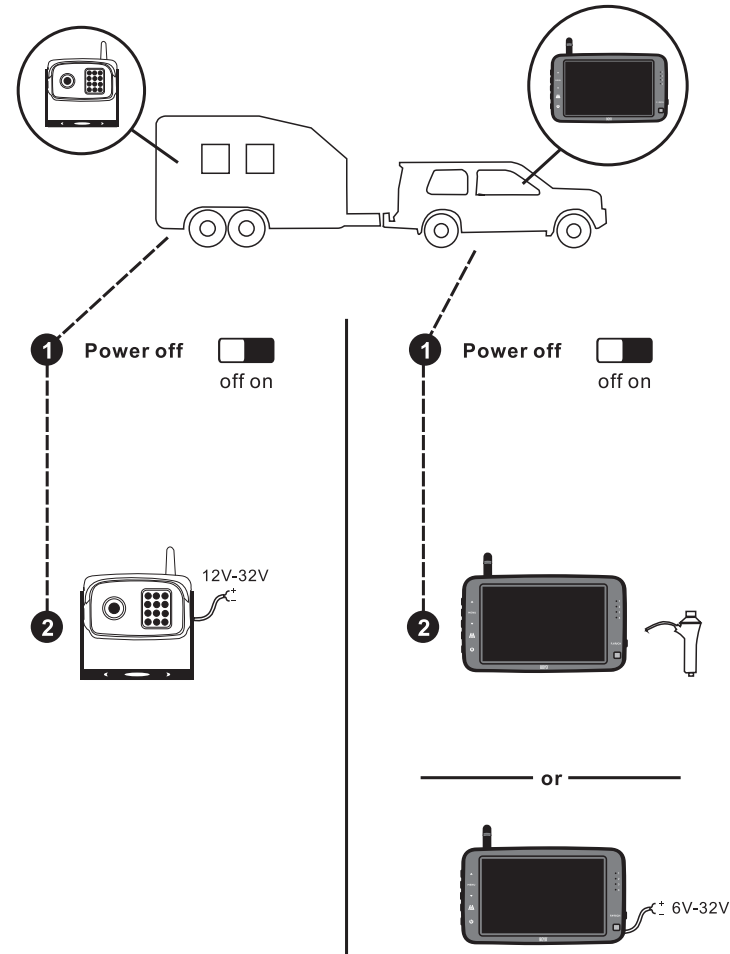
USER MANUAL

DC 12V - 32V Digital Wireless Monitor / Camera System

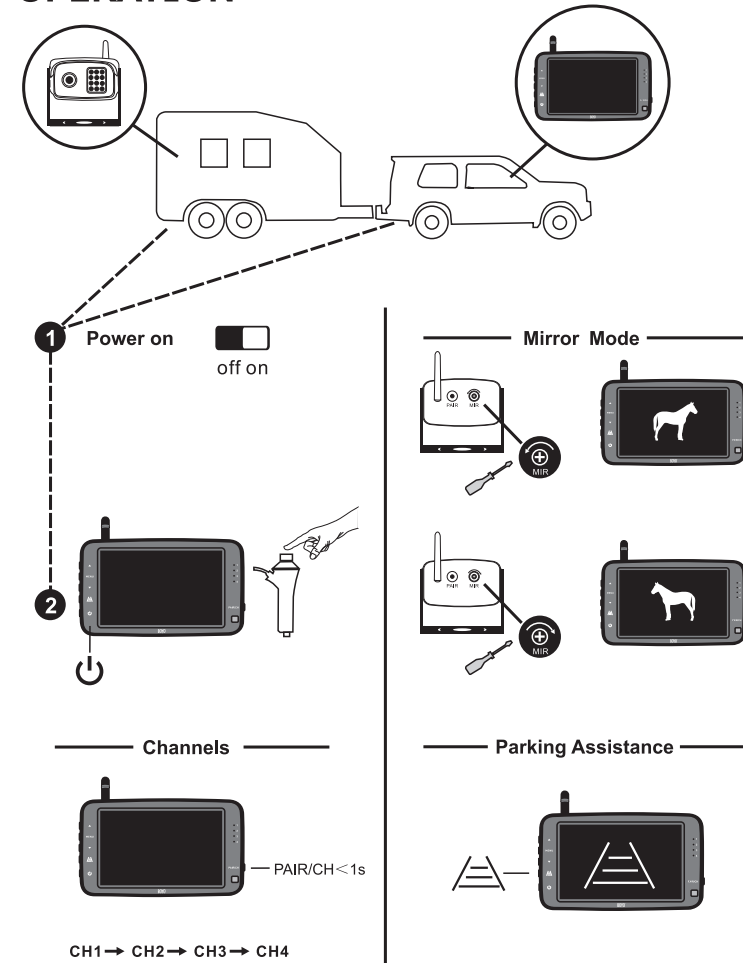


VTC500R

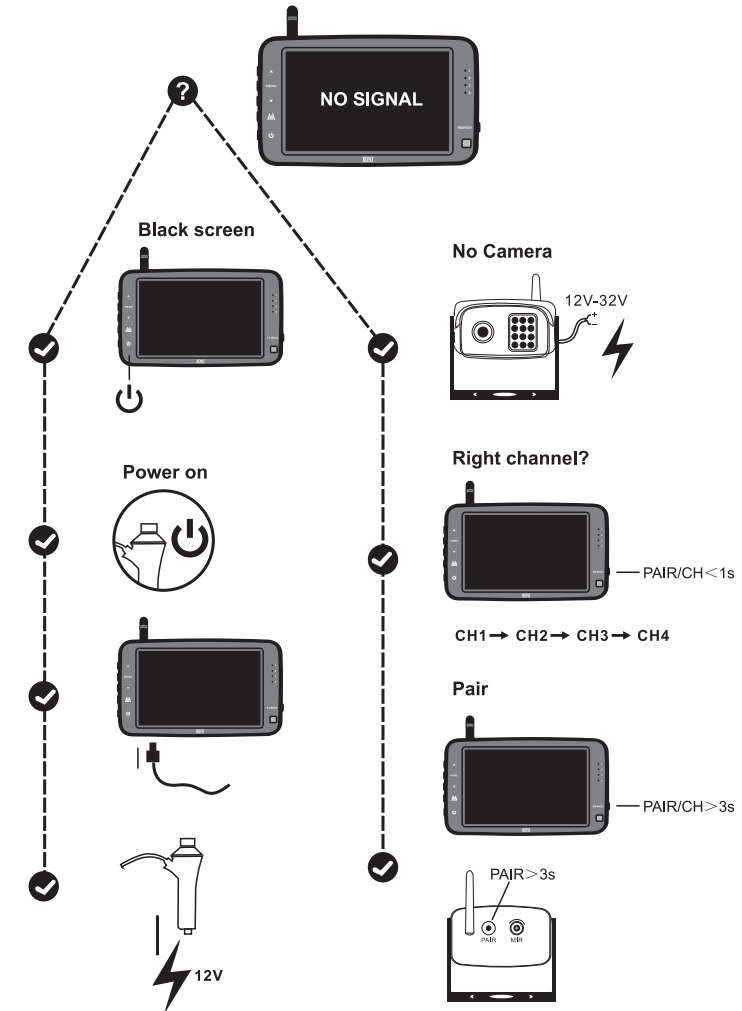
INSTALLATION



OPERATION



TROUBLESHOOTING



MANY APPLICATIONS

