

### 1. BILL OF MATERIAL



Camera



Manual



Harness



24' Male to male RCA cable

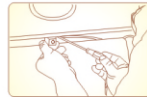
### 2. SPECIFICATION

- 1/4 inch CMOS color image sensor
- 648(H) x 488(V) Effective Pixels Resolution
- 500 TVL Horizontal Resolution
- Waterproof (IP68)
- Minimum Illumination: 0.1Lux, 0.0 with IR on
- Reverse/ Non-Reverse image selectable
- Excellent night vision picture quality

### 3. Installation Tip



1. Align the camera to the desired location. Make sure it is a safe area to drill into.



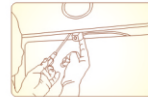
2. Tighten the first screw into the body with screw driver



3. Adjust the camera's position according to the actual display on the monitor



4. Align and drill the second screw to the body.



5. Make detailed adjustments and the installation is finished.

### 4. WIRING

