

Quick Installation Guide



1. System Overview

- One VTB301CA high resolution CVBS / AHD color camera with the following features:
 - IP69K Waterproof Rating
 - Mirror/Non-Mirror image, switched by loop wire
 - Distance line on/off, switched by loop wire
 - CVBS/AHD signal, switched by loop wire
 - 720P/1080P resolution, switched by loop wire
 - 170° (D) Wide view angle
 - 360-degree adjustable mounting angle
 - Auto-iris lens that automatically adjusts to light conditions
 - Infrared light for improved image quality in low-light situations
 - Night vision distance of approx. 26 ft
- 65 ft Extension Cable Included
- Supplied installation accessories

2. Content List



3. Installation

Install the VTB301CA as follows:

- a. Install the VTB301CA camera in the desired location, as follows:
 - 1) Fasten the camera mounting bracket, using the 2 self-tapping Philips screws, to the desired mounting surface, as shown in the Step 1 arrows of Figure 1.
 - 2) Position the camera in the camera mounting bracket. Adjust the camera to the proper angle, and then attach the camera and sun visor to the camera mounting bracket using the 2 supplied self-tapping Philips screws, as shown in the Step 2 and Step 3 arrows of Figure 1.

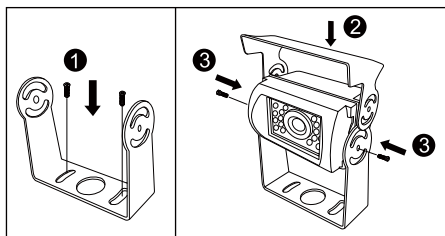


Figure 1 . Installing the Camera

- b. Route the extension cable from the camera location to the location of the output device (not supplied), such as a monitor or switcher.
- c. Insert the male connector of the extension cable into the appropriate female audio/video port of the output device (not supplied), such as a monitor or switcher.

CAUTION: To reduce the risk of electrical shock, disconnect the battery from the electrical system of the vehicle before starting the installation.

4. Reverse / Normal Image (Selectable)

The camera default setting is in reverse viewing. To change to non-mirror viewing, cut the ORANGE wire and re-power the camera for the changes to take effect.

5. Parking lines On / Off (Selectable)

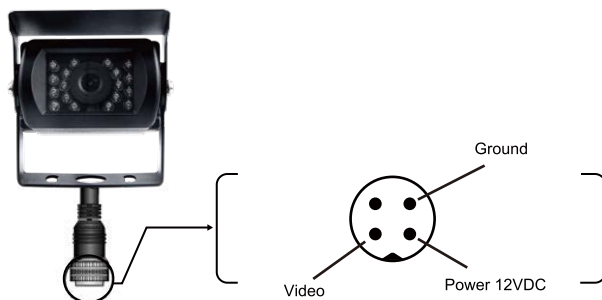
The camera default setting is grid line OFF. To turn on the grid lines, cut the GREEN wire and re-power the camera for the changes to take effect.

6. AHD / CVBS (Selectable)

The camera default setting is in CVBS signal. To connect and change to AHD signal, cut the PURPLE wire and re-power the camera for the changes to take effect.

7. 1080P / 720P (Selectable)

The camera default setting is 720P resolution when AHD signal is activated. To change to 1080P resolution, cut the BROWN wire and re-power the camera for the changes to take effect.



8. Specifications

Item	Specification
Image Sensor	<ul style="list-style-type: none"> ■ AHD - 1/2.9 inch ■ CVBS - 1/4 inch
TV System	NTSC
Effective Pixels	<ul style="list-style-type: none"> ■ AHD - 1920 (H) x 1080 (V) ■ CVBS - 640 (H) *480 (V)
Minimum Illumination	0.0 Lux
Power Supply Range	8~35VDC
Operating Temperature	-20°C to 70°C
Dimensions (Width x Height x Depth)	3 inches x 3 inches x 2.25 inches
Horizontal Angle	<ul style="list-style-type: none"> ■ 1080P: 125 degrees ■ 720P: 125 degrees ■ CVBS: 80 degrees
Diagonal Angle	<ul style="list-style-type: none"> ■ 1080P: 170 degrees ■ 720P: 170 degrees ■ CVBS: 100 degrees
Supplied Accessories	<ul style="list-style-type: none"> ■ Manual ■ Screws ■ 20M Extension cable ■ DC Power cable ■ Warranty card ■ Registration card

CAUTION: Before inserting screws into the mounting surface, ensure that the underside of the mounting surface is clear of equipment that might be damaged by the screws.