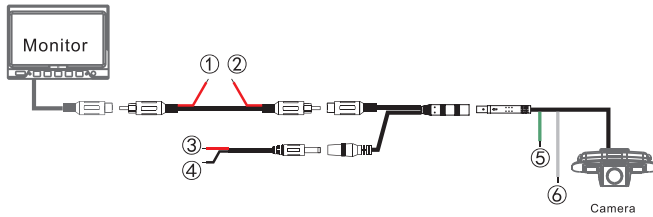
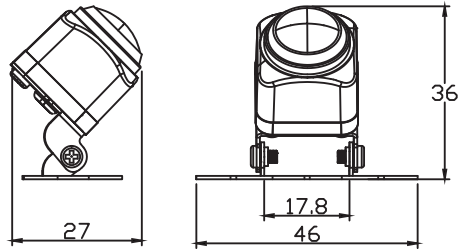


size:105x148mm

3.Wiring Guide



- ① The red wire is the monitor reversing trigger cable
- ② Connecting the red wire with the reversing lamp 12V power
- ③ The Red (+) Wire reverse backup lights
- ④ The Black Wire chassis ground
- ⑤ Parking Line Loop (Green)
- ⑥ Reverse Image Loop (White)



For technical support, contact 888-941-3060 or email info@visiontechamerica.com
WWW.VISIONTECHAMERICA.COM

BOYO[®]

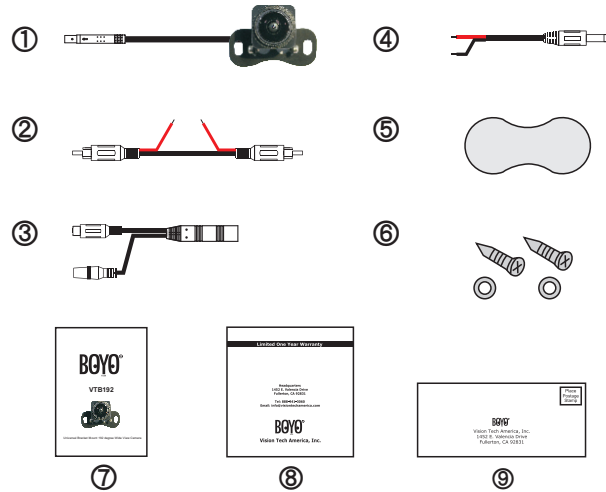
VISION

VTB192



Universal Bracket Mount 192 degree Wide View Camera

1. Bill of Material



Item	Description
①	Camera
②	Video Single Cable
③	Conversion Connector
④	Power Cable
⑤	3M Tape
⑥	Screw
⑦	User's manual
⑧	Warranty Card
⑨	Registration Card

2. Specifications

Technical term	Technical Parameters
Images sensors	ASX 340
Power Supply(DCV)	DC 12V(DC/DC)
Current Consumption	34 mA
Power	0.4 W
Effective pixel Array	728(H)X560(V) 400K PIXELS
Electionic shutter	Auto
Minimum illumination	1.5 Lux
S/N Ratio	46 dB
Resolution(TV Lines)	330 TV Line
TV System	NTSC ,Color
Lens Angle(Deg.)	192°
Video output	1Vp-p 75 Ω
IP rating	IP 68
AWB	AUTO
AGC	AUTO
BLC	AUTO
Operating Tem	-40° ~85° C
Storage Temperature	-40° ~85° C