

Mini Bracket Type Mount Rear View Camera with Trajectory Parking Lines

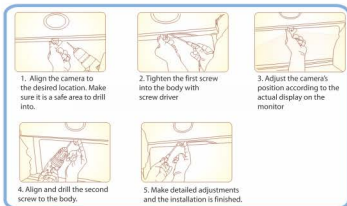
1. BILL OF MATERIAL

- Camera x1
- 20ft camera video extension cable (RCA Male to Male) x1
- 4ft power cable x1
- Screws x2
- Heavy duty double sided tape for bracket mount x1

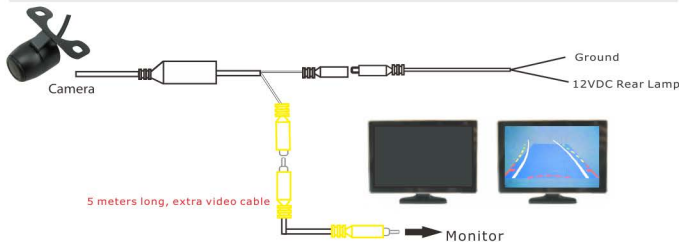
2. SPECIFICATION

- Waterproof Rating: IP68
- Intelligent reverse trajectory parking lines that move with the vehicle
- 18.5mm HD Mini Rear View Camera
- Image Sensors: 3089 Color CMD
- Video Output: 1.0 Vpp-75 Ohm
- PAL/NTSC Compatible
- Resolution: 600 TV Lines
- Min. Illumination: 0.5 LUX
- Lens Angle: 170°
- Auto Image Adjustment
- Power Supply: DC 12V

3. Installation Tip



4. WIRING



1. Find a suitable location to mount the camera so its view is unobstructed.
2. Run the RCA extension cable between the camera output and the monitor input.
3. Connect the red power socket and black power Plug together and connect the red wire to the 12V DC side of the reverse light or Ignition 12V DC (if you want to view the camera when not in reverse). Connect the black wire to Chassis Ground.
4. Once all connections have been made and before mounting the camera, make sure the camera comes on and you have a good viewing angle of the area.
5. Mount the camera with the supplied mounting tape and screws.

Important: The trajectory rear view camera must be mounted at a 30-40 degree angle. Do not mount it straight 90 degrees. Otherwise the sensitivity and accuracy of the trajectory parking lines will be affected.