

1. BILL OF MATERIAL



Camera



Manual



Harness



24' Male to male RCA cable

2. SPECIFICATION Cmos Image Sensor

- Zinc Metal Full Frame License Plate Mount
- CMOS Image Sensor
- 628 x 586 Resolution
- 480 TVL
- 170° Wide Viewing Angle
- Built-in true 3W white LED lights for illumination
- Reverse/Normal Image (Selectable)
- Parking Lines On/Off (Selectable)
- IP68 Waterproof Rating
- 24ft RCA Video Extension Cable
- Power Supply Range: 12VDC-16VDC
- NTSC

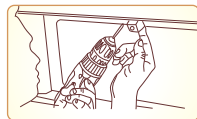
3. Installation Tip



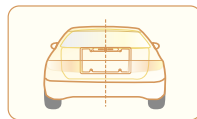
1. Remove the license plate screws and align the frame



2. Insert screws so the frame and plate are aligned

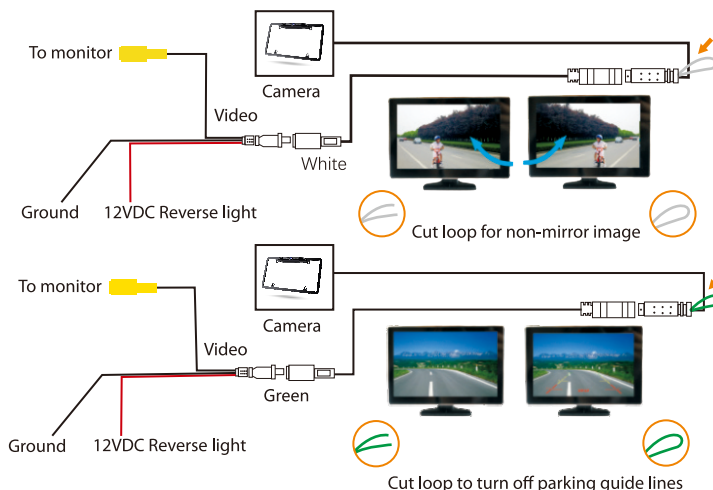


3. Loosely tighten the screws and adjust the camera angle.



4. Tighten the screws around the license plate frame.

4. WIRING



If using the camera for front view, cut the white loop to get a non-mirror image.

If using the camera for rear view, do not cut the white loop.

Cut the green loop to turn off the parking lines.