

USER MANUAL & INSTALLATION GUIDE



Rear view camera image



Side view camera image

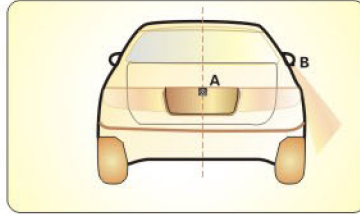
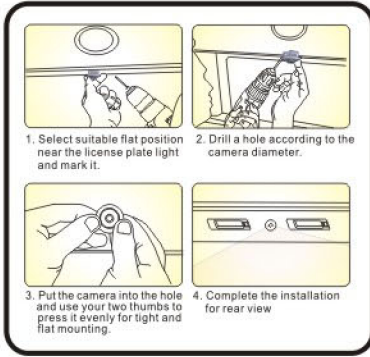
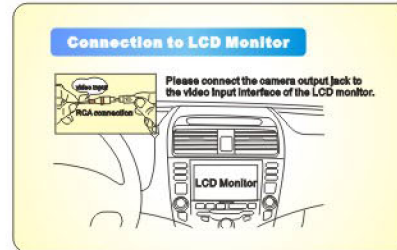
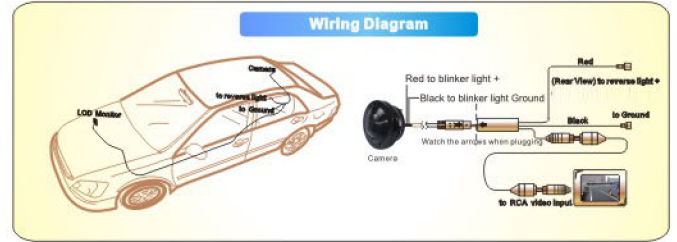
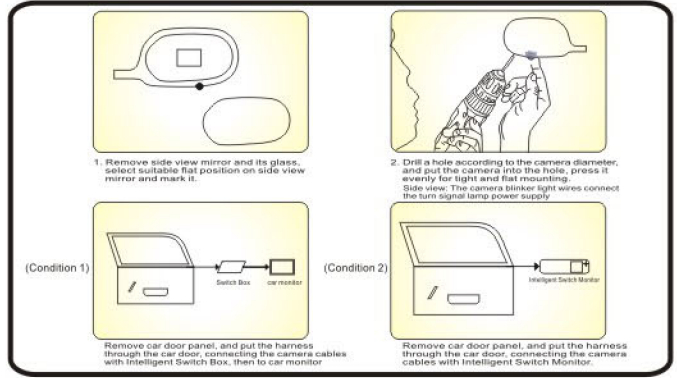


Image sensor	1/4" High Definition Color CMOS
Signal System	NTSC/PAL
Effective Pixels	N: 720X480; P: 720X576
Sensing Area	3.58mmx2.69mm
Sync System	Internal
Horizontal Resolution	480TVL
Min Illumination	0.2Lux
Diagonal Angle	120°/170°
Video Output	RCA, 1.0Vp-p, 75ohm
SNR	Better than 48db
Waterproof Grade	IP67
Current Consumption	max450mA
Nominal Voltage	DC12V
Working Environment	-22° F ~ 142° F, RH95%MAX
Night Vision	Optional
Image Switch	Optional
Guard Line	Optional
Other	Auto White Balance, AGC, Backlight Compensation

User Manual for Rear (Side) View Camera

- **Rear view:**  
Rear view: The camera blinker light wires connect the backup lamp power supply  
No-DVD-Player or DVD-Off Condition:  
When reversing, the monitor is automatically switched to display real-time backup images. After reversing, it goes off automatically.
- DVD-On Condition:  
When reversing, the monitor is automatically switched to display real-time backup image. After reversing, it automatically switches back to display DVD video.
- **Side view**  
Side view: The camera blinker light wires connect the turn signal lamp power supply  
Left/Right side view camera is activated by Left/Right steering lamp, when the steering lamp is turning on, will activate the side camera automatically, and shut off the side view camera when the steering lamp turning is finished.
- Condition 2:  
Left/Right side view camera is activated by Intelligent Switch Monitor, when the driver wants to see side view condition, he just touches car monitor switch button, car monitor will display side view camera vision automatically, no need to switching cameras frequently.



**Special function**  
Distance Grid Line ON/OFF:  
Default with Distance Grid line OFF: This option can be realized by cutting off the thin blue wire near cable harness from camera body.  
ON: Re-connecting the thin blue wire, camera will be with distance grid line again.

"List of Contents" (camera x 1, manual x 1, wire harness x 1, video cable x 1, hole saw x 1, warranty/registration card x 1)

IMPORTANT NOTES

1. The rear (Side) view camera functions technically as a driver assistance device, which can not be taken as a substitute for the driver's responsibility when operating the vehicle.
2. To keep the camera working properly, please clean the camera regularly to free it from dirt, waterdrops, snowdrops, and etc.
3. Although the camera is designed to be waterproof, please do NOT use high-pressure water jet to wash the camera as this may break the glass lens.
4. Keep the cables of the camera away from high temperature objects such as engine or exhaust.
5. If the camera model you have comes without in-built LED lights, please turn on your license plate light for better vision at night or in dark areas.
6. The cameras are applicable to vehicles with DC 12V power output (10% higher or lower allowed), please do NOT use it on vehicles with DC 24V or other power output out of this range, otherwise it is very likely to get burned. (Except some commercial vehicle cameras that can support DC 12V-24V)
7. The specifications of the camera are subject to change without prior notice.

Environmental Reference

- Old electronic devices don't belong into the bin.
- If you want to dispose this equipment later, remove all cables and send it back to supplier or bring it to a collection point for old electronic devices.
- You can dispose this device together with your old car, too. You don't have to remove it in this case.
- The packing can be recycled. Dispose the packing in a collecting system planned for it.



# USER MANUAL

**BOYO®**  
VISION

Car Rear/Side View Camera

VTK370DL



Distance Grid for Rear View Camera  
Can be used as Side View Camera  
LED blinker lights Built-In