



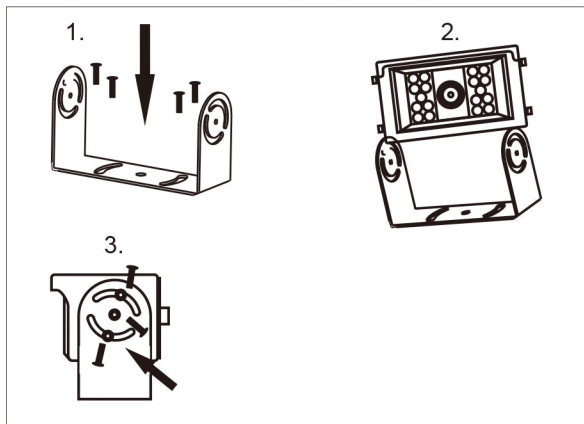
VTB301FHD

1. System Overview

- Waterproof Rating: IP69K
- Image Sensor: 1/3" SONY CMOS, 1080P
- Mirror/Non-Mirror Image (Selectable)
- 360 degree adjustable mounting angle
- Built-in microphone
- Minimum illuminator: 0 Lux (Infrared lamps on)
- Night vision distance: approx. 49.2ft (4 infrared lights)
- Viewing Angle up to 130 degree
- Day / Night sensor for automatic adjustment

2. Installation

- A. Install the VTB301FHD camera in the desired location, as follows:
1. Fasten the camera mounting bracket, using 4 self-tapping Philips screws, to the desired mounting surface, as shown in Picture 1.
 2. Position the camera in the camera mounting bracket, as shown in Picture 2.
 3. Adjust the camera to the proper angle, and then attach the camera to the camera mounting bracket using the supplied hex-head machine screws (with washers) as shown in Picture 3.

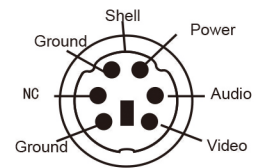


- B. Route the extension cable from the camera location to the location of the output device (not supplied), such as a monitor or switcher.

- C. Insert the male connector of the extension cable into the appropriate female audio / video port of the output device (not supplied), such as a monitor or switcher.

3. Normal / Mirror Selector

- A. Put a screw-driver into the hole on the back of the camera
- B. Rotate the screw-driver to shift between normal and mirror.



4. Specifications

Image Device	1/3" SONY SENSOR CMOS
TV System	NTSC
Effective Pixels	1920(H) X 1080(V)
Pixel Pitch	2.9µm X 2.9µm
Sync. System	Internal
Resolution	1080P
Minimum Illumination	0.1 Lux(day), 0 Lux(with IR)
Microphone	Yes
Video Output	1.3vp-p, 750hm
AGC	Auto
S/N Ratio	Better than 52dB
White Balance	Auto
Electronic Shutter	1/60~ 1/100,000 Seconds
Current Consumption	Max. 260±20mA
BLC	Auto
Power Supply	DC12V
Operating Temperature	-22°F ~ 158 °F, RH95%MAX
Storage Temperature	-40 °F ~ 176 °F, RH95%MAX
Lens	f= 2.8mm / F = 2.0
Lens Angle	130°

5. Accessories

Manual, screwdriver, 65.6ft cable (6pin mini din to RCA), warranty card and registration card