

# USER'S MANUAL

## Keyfree Touch®

The system can be locked or unlocked by "Touching" with the PIN of 4-10 digits



\* Backlight functions: If you touch Random number LED light lasts 5 seconds.

### 1. Lock the door

- 1) Touch the #9/0 until LED #9/0 lights up
- 2) Touch the ENTER button and then all LEDs blink 3 times and door will be locked.

### 2. Unlock the door

- 1) Enter 4~10 digits PIN code. (initial PIN "1/2, 3/4, 5/6, 7/8")
- 3) Touch the ENTER button and then all LEDs blink 3 times and the door will be unlocked.

\* **Random Security Code is assigned to be entered before entering the PIN code**

### 3. PIN Change (default PIN CODE "1/2 3/4 5/6 7/8")

- 1) Press and release the reset button on the back of the main unit.
- 2) Hold down the buttons #1/2 and #3/4 at the same time on the keypad (from outside the windshield) until all LEDs light up.
- 3) Enter the New 4 ~ 10 digits PIN code and touch the Enter button.
- 4) It will indicate the assigned PIN numbers in order, and all LEDs blink 3 times.

### 4. LED Scan On/Off (only works at the door lock status)

- 1) Hold down the button #5/6 until LED #5/6 lights up
- 2) Touch the Enter button until all LEDs blink 3 times.

### ⚠ Cautions

- If you make the input mistake 5 times, the system will be blocked for 10 minutes. Then you can use the system again after 10 minutes.
- Please keep your PIN code safe when you use the Keyfree Touch
- Warranty : One year
  - If it has some faults in manufacturing process, we will exchange it or fix it for FREE and if customers make a mistake on the product and it has some faults, we will try to fix it at the lowest price.
- This product is only an auxiliary device with convenient features, So, vehicle owner is responsible for all kinds of the theft and damage in your car.

# INSTALLATION MANUAL

## Keyfree Touch®

### 1. Components



Keypad

Main unit

wire

Manual

### 2. Mounting Procedure

#### 1. Before you beginning

- Manufacturer and Seller do not provide vehicle wiring information for each car, since there are many different makes and models of vehicles.
- The principle of Keyfree touch sends the pulse signal to lock or unlock the door. So don't connect the signal line (Brown or Orange) to the lock or unlock power line of vehicle.
- Recommend to inquire of and install at local car service centers. (remote engine start, car security, car alarms)
- For DIY, please find vehicle wiring diagram at web. (Site may vary due to web owner) ex) <http://www.bulldogsecurity.com/bdnew/vehiclewiringdiagrams.aspx>  
<http://www.the12volt.com/installbay/vehicles.html>

#### 2. Product Wires Mapping

Pin	Color	Description
1	Black	(-) System Ground Input
2	Red	(+12V) System Power Input (at Key box)
3	Brown	(-) Unlock Signal Output
4	Orange	(-) Lock Signal Output
5	*Blue	(-) Aux 1 output for Engine lock (as option)
6	*White	(-) Aux 2 output for Engine lock (as option)

#### 3. Find the three lines and ground in your car and connect to the wires from the harness.

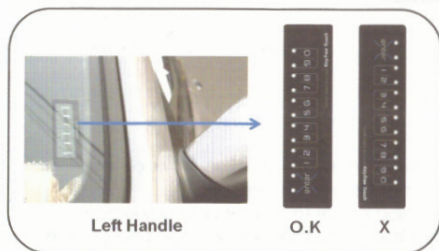
- Lines: +12V constant Power, Power lock signal, Power unlock signal
- Ground: Connect the Black wire from the harness to the clean chassis ground

#### 4. Plug the connector from harness to the main unit and check the operation status.

- Align the white wire of the connector to the arrow mark on main unit (all LEDs light up)
- In case of no response, unplug the connector, re-connect it or check the connection. **(initial one time to adjust the sensitivity)**
- If proper operation, Unplug the connector

### 5. Keypad placement

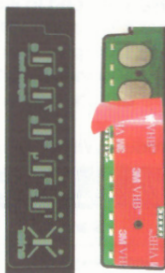
- Clean and wipe the location for the keypad on the windshield
- If the glass is tinted, it is recommended that you cut off the keypad size and attach the main unit on it.
- Peel off the red protective vinyl on the keypad.
- Attach the keypad at the centre of the A-pillar of the front windshield near driver's seat.
  - The direction of #1/2 is downside, and #9/0 are upside (Left side handle)
  - The direction of #9/0 is downside, and #1/2 are upside (Right side handle)
- Please make sure to affix the keypad completely to avoid air bubble forming



- \*Tip!!! for easy and neat affixing the sheet onto the windshield,
- 1) Dip it fully into water in a cup.
  - 2) Place it onto windshield.
  - 3) Then, you can move it flexibly and position it properly
  - 4) Sweep it gently with plastic card from up to down to let water drip
  - 5) Leave it for 3-5 minutes and let it get dry so as to be firmly affixed.

### 6. Main unit Attachment

- Peel off the red protection vinyl on the main unit.
- Align the main unit with the white line on the keypad precisely. To match LEDs and numbers, make sure to align the LEDs to the LED holes on the keypad.



### 7. Plug the connector from harness to the main unit and check the operation status.

- Align the white wire of the connector to the arrow mark on main unit.
- Test Lock/unlock the door (see the User's Manual 2,3)
- In case of no response, unplug the connector, re-connect it or check the connection.

### 8. Arrange the wire and bracket of your vehicle

- Fix well wires not to move in the car ignition area and kick panel.
- Fix the brackets of ignition switch and kick panel

### 9. Touch area

- Touch the white rectangular area with a finger between two numbers softly.



### 3. Programming \*\* Most of the vehicles are at default state.

1. Change the number of Pulses (default :1)

No	Lock Pulses	Unlock Pulses
1	Press and release the reset button on the back of the main unit	
2	Hold down buttons #3/4 and #5/6 at the same time on the keypad until all LEDs light up.	Hold down buttons #5/6 and #7/8 at the same time on the keypad until all LEDs light up.
3	Select #1/2, 3/4, 5/6, 7/8, 9/0 for the desired number of lock pulses 1, 2, 3, 4, 5	
4	Touch ENTER button until all LEDs blink 3 times.	

2. Change the duration of pulse (default : 0.8 sec)

- Press and release the reset button on the back of the main unit.
- Hold down buttons #7/8 and #9/0 at the same time on the keypad until LED #1/2, 3/4, 5/6 light up.
  - 1) For 0.8 seconds, press and release button #1/2.
  - 2) For 3.5 seconds, press and release button #3/4.
  - 3) For 0.3 seconds, press and release button #5/6.
- Hold down the ENTER button until all LEDs blink 3 times.

### 4. Programming of Factory Reset

1. Press and release the reset button on the main unit.
2. Hold down buttons #1/2 and #7/8 at the same time until all LEDs blink 3 times.

### 5. Specifications

1. Supply Voltage DC 12V (Negative signal output only)
2. Main unit dimensions: 112 (W) × 29 (H) × 9 (D) mm
3. Keypad panel Dimensions: 125 (W) × 32 (H) mm
4. Operating Environment -30 °C ~ +80° (-22°F ~ 176°F)

### ⚠ Cautions

1. This system is designed for vehicles with power door locks only.
2. The contents of this manual and the specifications of this product are subject to change without notice.

### FCC INFORMATION TO THE USER

This equipment has been tested and found to comply with the limits for a Class A digital device, pursuant to part 15 of the FCC Rules. These limits are designed to provide reasonable protection against harmful interference when the equipment is operated in a commercial environment. This equipment generates, uses, and can radiate radio frequency energy and, if not installed and used in accordance with the instruction manual, may cause harmful interference to radio communications. Operation of this equipment in a residential area is likely to cause harmful interference in which case the user will be required to correct the interference at his own expense.

### WARNING

Any change or modifications not expressly approved by the manufacturer could void the user's authority to operate the equipment.