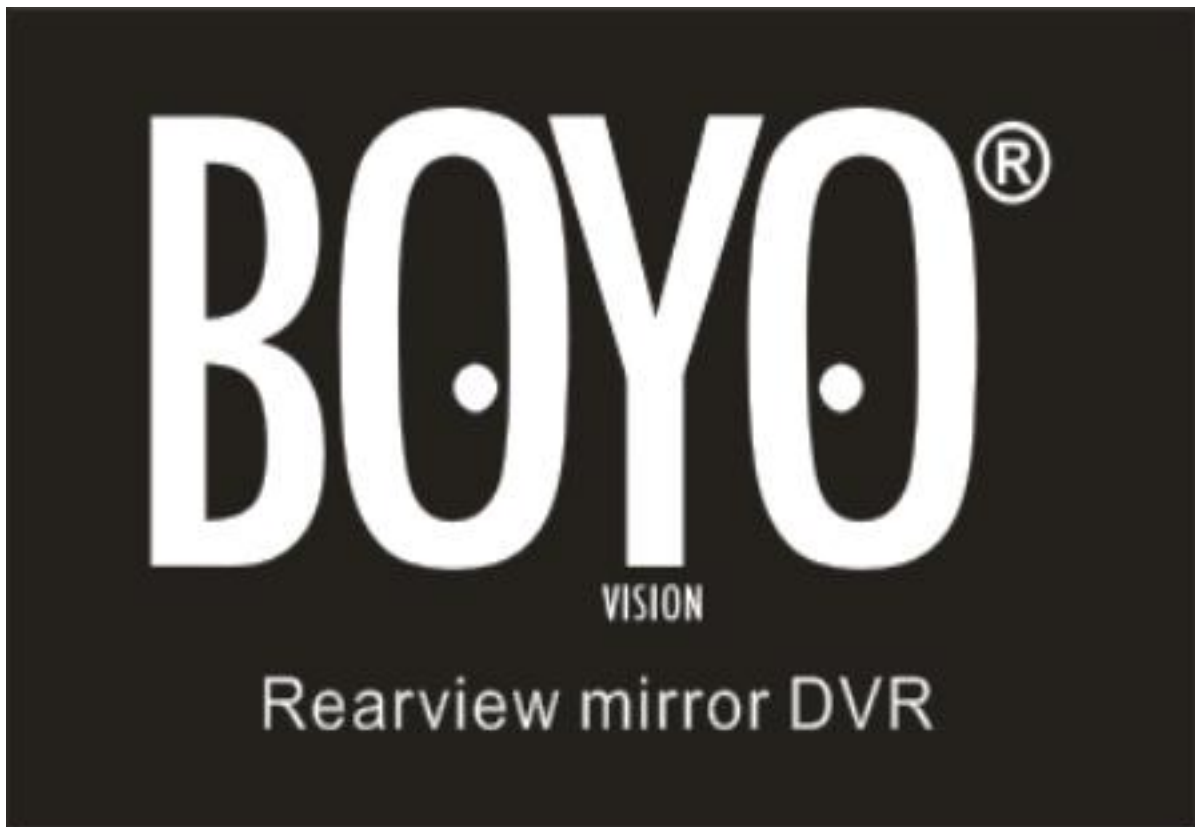


Rear View Mirror Monitor DVR with 360°camera

(VTR50M)

User Manual





Owner's Manual

VTR50M

- 1. Contents**
- 2. Before Use**
- 3. Product Introduction**
- 4. Installation Steps**
- 5. Function Introduction**
- 6. Device Specifications**
- 7. Trouble Shooting**



Before Use

1.1 Attention



Please read the complete Owner's Manual before operating the device in order to avoid bodily harm or improper operations caused by this device.



For safety, please do not operate this device while driving.

1.2 Operating Environment

Please do not expose this device to rain or an excessively damp environment, this device does not have water resistant protection.

Please do not expose this device to an excessively dusty environment, to avoid the dust contamination on the camera lens and other components.

Please dispose of this device properly. This device contains batteries, avoid disposing into a fire to avoid any possible explosion.

1.3 Power Harness

Please use the provided POWER harness, do not use any other POWER harness otherwise it may damage the unit.

1.4 TF Card

This device supports TF cards 8 GB to 32 GB, High Speed Class 6 to Class 10.

Product Introduction

- ① Display Screen / Touch Panel; display video and operating interface via touch control
- ② Power Button: Short press to turn on/off screen; Long press for 2 sec for power on or power off.
- ③ Camera: Captures videos and still images
- ④ TF card slot: for TF card to store videos and still images
- ⑤ AV Input: To add an optional camera for 2 channel recording, connect reverse trigger wire for back up camera
- ⑥ USB connector: To power device and charge internal battery
- ⑦ RESET Switch: Reset if the device is locked up

Installation Steps

1. Vehicle ignition in the off position.
2. Attach device to existing vehicle rear view mirror with provided rubber straps.
3. Plug in USB power harness into device. Route and conceal the power harness along the vehicle headliner, A pillar and dash.
4. USB to Hardwire Option 1 - connect the red wire (ACC) of the power harness to the fuse box +12vdc ignition switch on, the black wire connect to chassis ground.
5. USB to Cig Plug Option 2 – Plug in USB power harness into device. Route and conceal the power harness along the vehicle headliner, A pillar and dash to vehicle Cig Lighter socket and plug in.
6. Installation complete. TEST all functions

1 Installation image1



2 Installation image 2



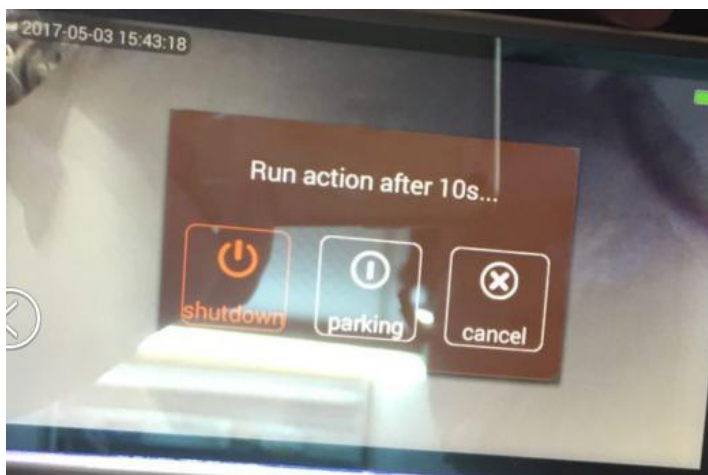
Functions

4.1 Operation and Sleep Mode

4.1.1 Startup & Shutdown

When the vehicle ignition switch (ACC) is on, the device will be automatically turned on. When the vehicle ignition switch (ACC) is switched off, the device will automatically display “shutdown”, “parking” and “cancel” menu option as shown in the picture 4.1.2 below. To manually turn off the device with ignition switch on long press the device power button for 2 sec to power off, long press power button for 2 sec to power back on.

4.1.2 Parking Monitor Mode



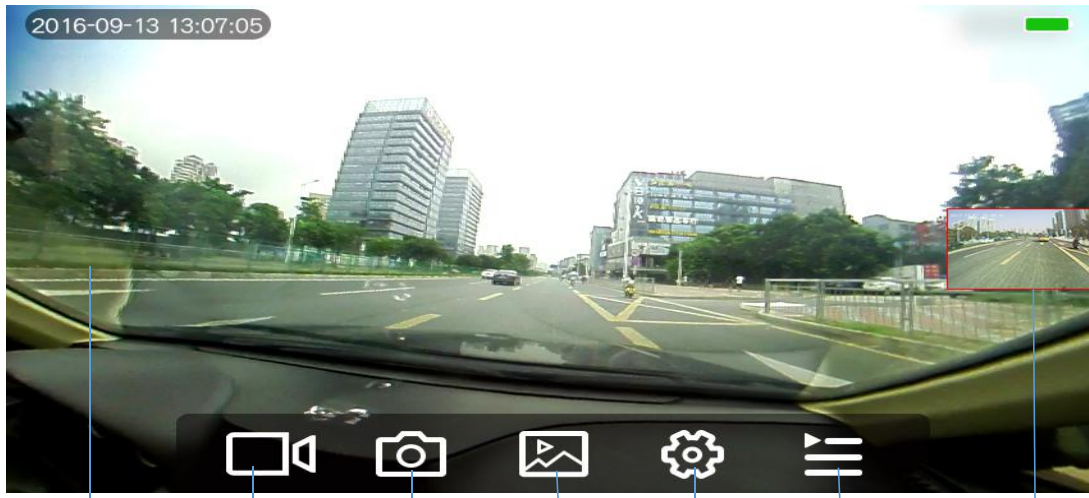
When the vehicle ignition switch (ACC) is turned off or a car charger is unplugged, the device will automatically display “shutdown”, “parking” and “cancel” menu option as shown in the picture above. When you select “parking” option, it will be entered into parking monitor mode.

When the device detects an impact or a collision, the device will wake up and start recording.

NOTES: Parking Monitor Mode works properly if the dash cam is hardwired to a constant power source.

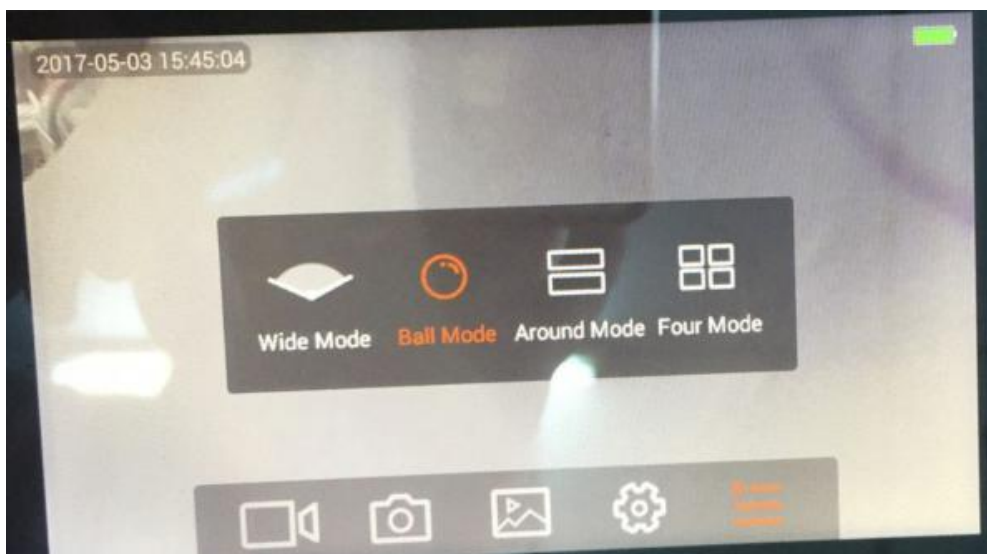
4.2 Interface operation

4.2.1 Interface operation preview



4.2.2 The video interface preview and operation

4.2.2.1 The video switch mode



4.2.2.2 Wide-angle mode (Wide Mode)



4.2.2.3 Spherical mode (Ball Mode)



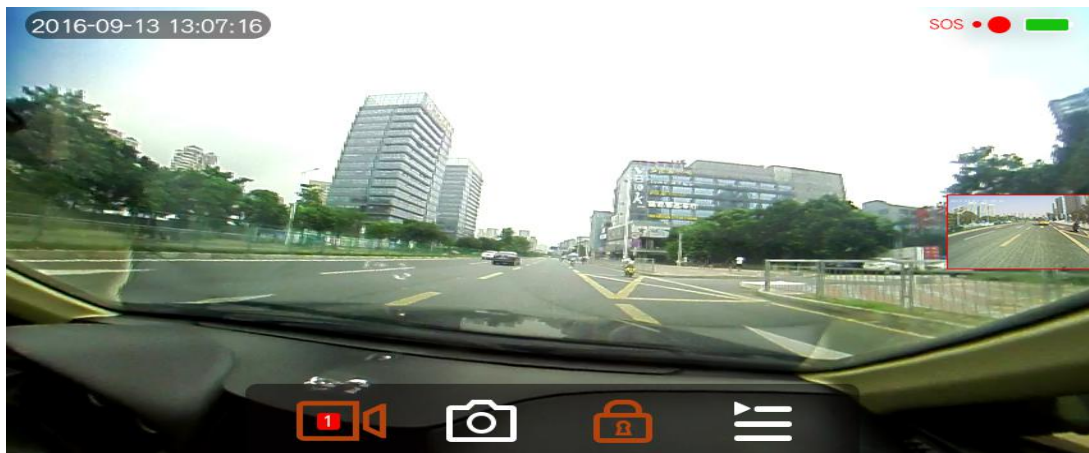
4.2.2.4 Front and rear mode (Around Mode)



4.2.2.5 Multi-window mode (Four Mode)



4.2.2.6 Video recording in case of any impact or collision in lock mode



4.2.2.7 The display of rear view camera video images in Picture in Picture mode



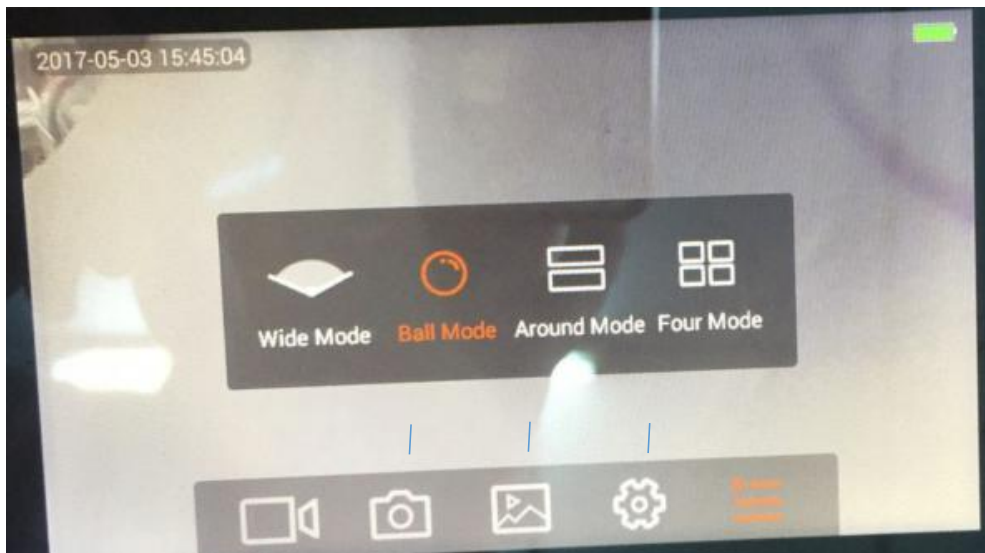
4.2.3 Video and Photo Playback Mode

The unit stores video and photos on its micro SD Card. They can be reviewed and played back through Playback Mode.

4.2.3.1 Video and Photo Playback File Menu



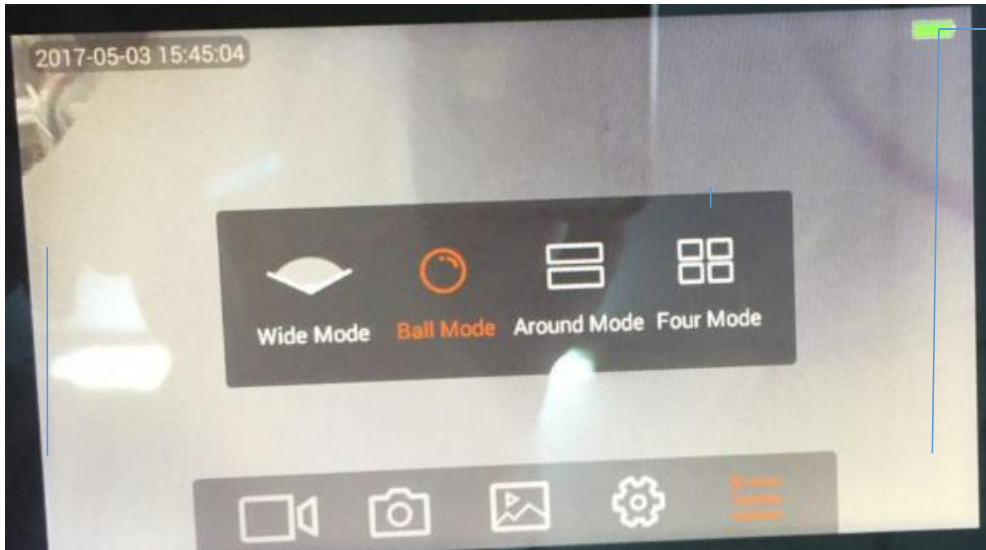
4.2.3.2 Front camera video recording playback and mode switching



4.2.3.3 Rear camera video playback



4.2.3.4 Picture play-back and playback mode switching



4.2.4 Settings

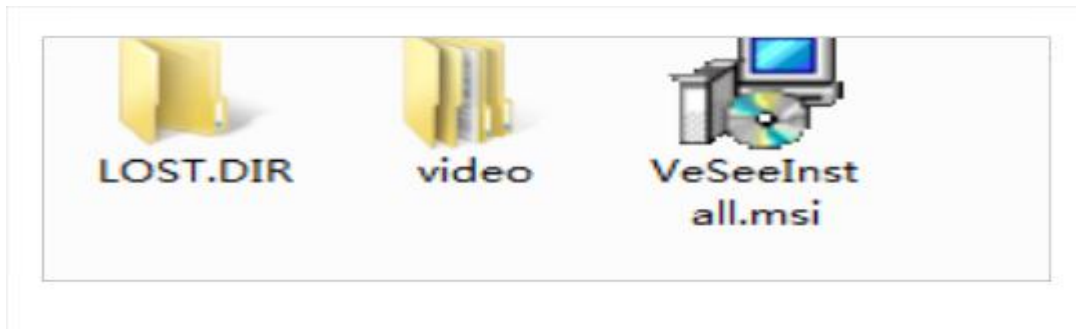
4.2.4.1 Video Settings



4.2.4.2 System Settings



4.3 Download VeSee Player and Installation



Take out TF memory card and insert it into PC SD Card slot. Locate a file called “VeSeeInstall.msi” and install its application by double clicking it.

4.4 Device Specifications

Specifications	
Parking Monitoring	Supported
Loop Video	Supported
Video Format	MP4
Photo Format	JPEG
Camera Pixel	3 Million Pixels
Camera Angle	Horizontal 360 Degree
Display Screen	4 inch 480x800
Touch Screen	5 Points Touch Control
Storage	Supports 8GB-32GB, Class 6 & Above
Loudspeaker	4Ω2W
Microphone	-38dB
Collision lock	Supported
Low-voltage protection	Supported
High-voltage protection	Supported
Supply reverse connect protection	Supported
Short-circuit protection	Supported
USB	Mini USB 2.0
Operating voltage range	DC 10.5V-16V/4.4V-5.8V
Operating environment temperature	-4° F - 149° F / -20° C - 65° C
Storage environment temperature	-40° F - 185° F / -40° C - 85° C

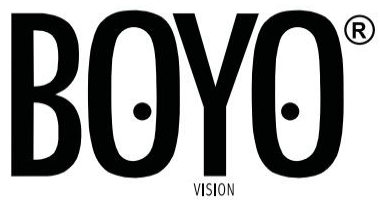
4.5 Trouble shooting

If the device doesn't work under the normal operating conditions, please review the following for your reference; if the problem cannot be resolved, please contact customer service.

Problem	Cause	Solution
Device will not power up	Cig Lighter plug charger is damaged or the fuse is blown. No power from vehicle Cig lighter socket	1. Inspect Lighter Plug Charger for damage, if no damage check if fuse is blown, replace fuse if needed. 2. If no power from vehicle cigarette lighter socket. Inspect the fuse and replace if needed
	The power harness is disconnect or not connected properly	1. Check the power harness IGN ACC (red) and Ground (black) connections. 2. Confirm proper connection with a volt meter. Confirm connection of cable to the device.
	System failure	Press the power button for about 10 seconds to reset and restart the device
Screen not responding or frozen	System failure	1. With a paper clip or pin, momentarily press the reset button of the back of device to reboot the operating system. 2. Press the power button for about 10 seconds to reset and restart the device.
With ignition on the device will not turn on automatically	car charger is damaged or insufficient power(cell selection)	1. First check-out car charger, if no damage using the car charger to supply power to battery of device 2. The battery has been damaged, need to replace the battery
	The power line BATT+/ACC connect error	Check whether power line BATT+/ACC wiring connection accurately and successfully connect
Video freeze on HD	TF card read-write speed too slow	Please use a TF card Class 6 or above
No voice when playback	"Vid Voice" is set to "off"	Open "Settings" Set "Vid Voice" to "on"
	The system volume is too low	Increasing the system volume
Cannot record video	No TF card	Insert the TF card
Unable to loop video	Too many video files locked	Delete the video files you don't need
Screen is too dark	Brightness is set low	Adjust brightness in settings

Packing List

360° Camera/Rear View Mirror Monitor DVR x 1
12 FT USB to Cigarette Lighter Plug Power Harness (Cig Plug has USB socket) x 1
10 FT USB to Hardwire Power Harness x 1
Mirror Mounting Straps x 2
Rear View Camera with 20ft AV input Cable×1
16GB Micro SD Card
User Manual
Warranty Card
Registration Card



Vision Tech America, Inc.
1452 E. Valencia Dr.,
Fullerton, CA 92831
Tel: 888-941-3060

For technical support contact 888-941-3060 or email
info@visiontechamerica.com WWW.VISIONTECHAMERICA.COM
