

1. BILL OF MATERIAL



Monitor



Manual



Power Wire



Cable



Screw & 3M glue



Front housing
& snap spring



Camera



Windshield Mount



Bracket



Sunshade



Hole saw

2. SPECIFICATION

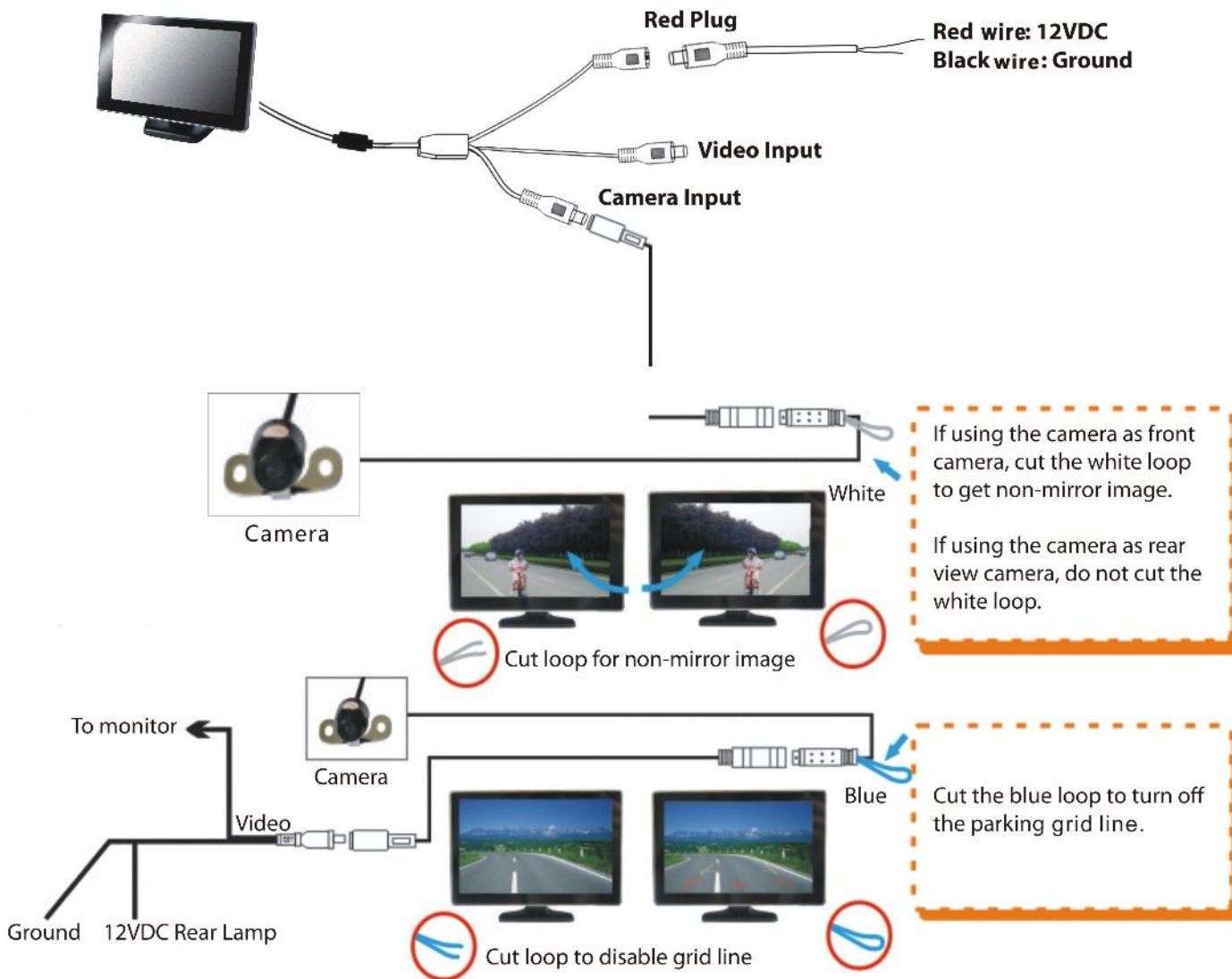
Monitor

- Screen Type: 4.3" Digital TFT LCD
- 2 Video Input
- Display Format: 16:9
- Power: 3W+
- Power supply: 12VDC
- Auto video detection, camera priority
- PAL/ NTSC auto switch
- Pixel: 1200x680
- Slim and Sleek Design
- Contrast: 350:1
- Dimension: 4.75" (W) x 3" (H) x 0.25" (D)

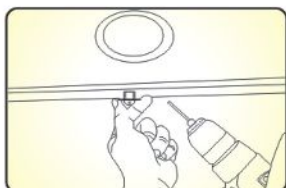
Camera

- CMOS 7070 Sensor
- 420 TVL Horizontal Resolution
- 640(H)x480(V)Pixels
- Waterproof(IP68)
- Minimum Illumination:0.1Lux,0.0 with IR on
- Reverse/Non-Reverse image selectable
- Built-in parking grid line selectable
- Includes bracket mount and keyhole mount accessories for dual mount solution.

3. WIRING



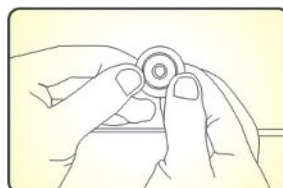
4. Installation Tip



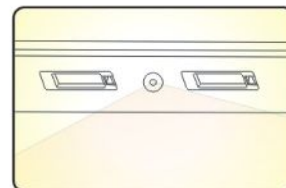
1. Select suitable flat position near the license plate light and mark it.



2. Drill a hole according to the camera diameter



3. Mount the camera into the hole using your two thumbs to press it evenly for tight and flat mounting



4. Read section #3 for wiring help.

For technical support contact 888-941-3060 or email info@visiontechamerica.com
WWW.VISIONTECHAMERICA.COM