

Multiplicative Comparison

Set B (Harder facts)

Standard: 4OA2

Materials:

- Story Problem Cards
- Math notebook, pencil

I Can:

- Choose a story problem card
- Read and understand the word problem
- Understand, solve and check by showing my thinking with drawings eg. a bar model and equations
- Share my strategy with a partner.

Note:

- Harder facts (9, square, 3, 6, 7)

Set B

Miguel is 2 feet tall. His dad is 3 times as tall as Miguel. How tall is Miguel? Show how you know.



Rob's corn plants are 4 feet high. Matt's garden has corn plants that are 9 times higher. How high are Matt's corn plants? Show how you know.



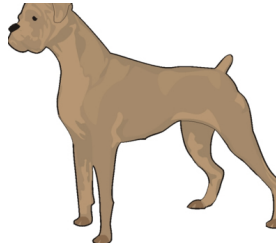
Aunty Betty is six times Rosa's age. Rosa is 6 years old. How old is Aunty Betty? Show how you know.



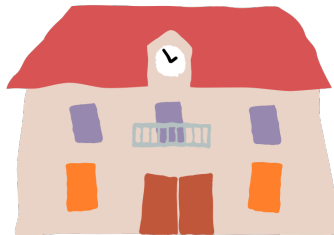
Set B

(continued)

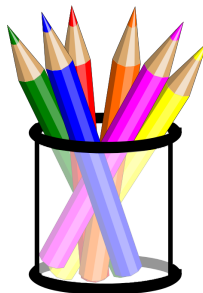
Our dog is 28 inches high. Our rat is only 7 inches high. How many times higher is our dog than our pet rat? Show how you know.



The school is 49 meters high. K Mart is only 7 meters high. How much higher is the school than K Mart? Show how you know.



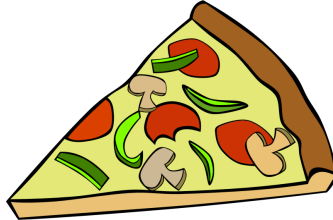
Shae's pencil is 6 cm long. Mario's pencil is 7 times longer. How long is Mario's pencil? Show how you know.



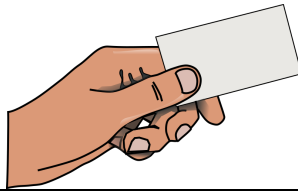
Set B

(continued)

A family size chicken dinner costs \$36. Having pizza costs 9 times less. How much does pizza cost? Show how you know.



Marina and her brother collect Pokemon cards. Marina has 3 times less cards than her brother. Her brother has 27 cards. How many Pokemon cards does Marina have? Show how you know.



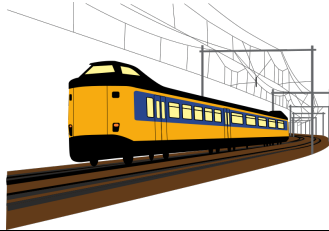
Robert scored 9 points at the soccer grand final on the weekend. This score was 7 times less than he scored in last year's grand final. How many points did Robert score in last year's final? Show how you know.



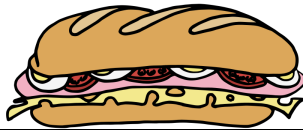
Set B

(continued)

The bus fare to school costs \$27. The train fare is three times less than the bus fare. How much is the train fare to school? Show how you know.



The local store sells hero sandwiches. They cost six times less than the diner down the road. The diner charges \$36 for a hero. How much do the hero sandwiches cost at the local store? Show how you know.



Teresa is seven times younger than her mum. Her mum is 56 years old. How old is Teresa? Show how you know.

