



# Gallagher Animal Performance

-  
Quick Start Guide

## 2 Quick Start Guide

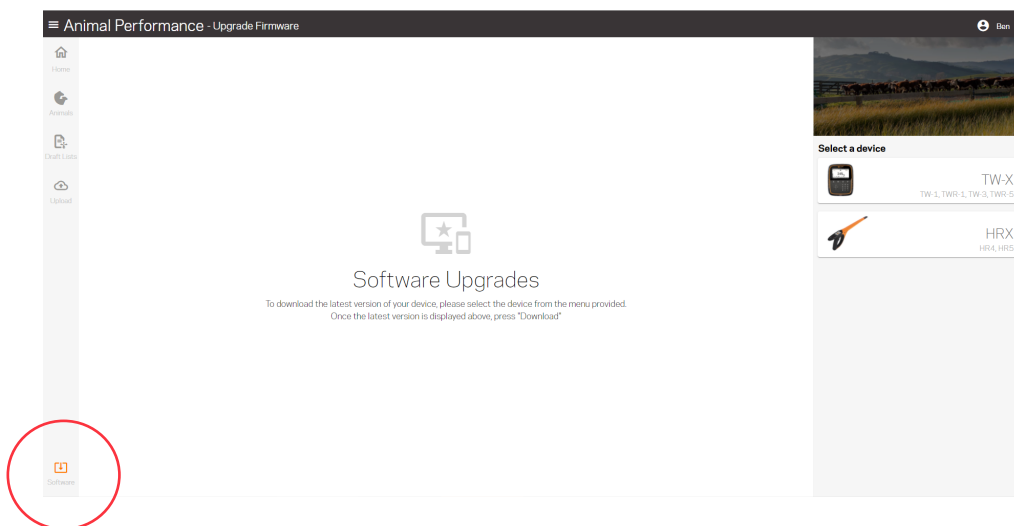
### Register for an account and download the Animal Performance App

- 1 Visit <https://am.app.gallagher.com/amc/dashboard> to login or create an account
- 2 Download the **Gallagher Animal Performance App** from the Apple App Store or Google Play.



### Update your hardware - TW Weigh Scales

- 1 **Login to your account here** and select the icon at the bottom left of the page (see below)



- 2 You will then be able to **select the update file** for your TW or TWR Weigh Scale

Ensure you have all the sessions you want to send to the Gallagher Animal Performance software on the TW before updating

## 3 Quick Start Guide

3

To update your TW Weigh Scale, download the file, put it onto a USB memory stick, insert into the TW and switch on.

Follow the prompts on your TW or TWR Weigh Scale to install the update.



**IMPORTANT NOTE: The database structure is changed when updating so you will no longer be able use the older APS software.**

While you are able to import data into the cloud afterwards, it is quicker to 'tidy-up' your sessions, transfer to the TW and then commence the software update.

## Update your hardware - HR Hand Held EID Tag Reader

1

Find the update file using step 1 & 2 under 'Update your hardware - on the previous page. The new software is only compatible with HR Hand Held Readers that feature built in Wi-Fi.

For the HR Hand Held EID Tag Reader update, download the file, plug in your HR to the PC via the USB cable and run the file on the PC.

**Note:** the updater will only run on a Windows PC.

Follow the prompts to update the HR Hand Held EID Tag Reader.

## Sync your TW Weigh Scale data to your web account

1

### Connect your TW Weigh Scale to Wi-Fi

From the home screen, tap on the Settings Cog > Device Settings > Wi-Fi > Enable Wi-Fi > Search > Find and connect to your Wi-Fi router

2

Go back to the home screen and select the cloud sync icon



## 4 Quick Start Guide

3

Log in with your **Animal Performance** username and password

4

Your database will now sync to your web account

To view data on your smartphone App, open the App then go to Menu > Sync

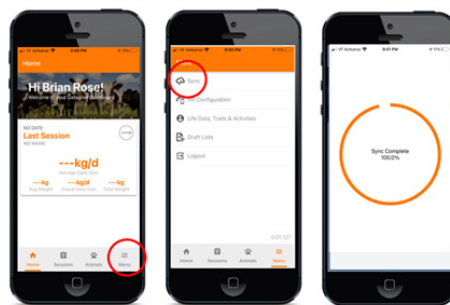
The TW will sync directly to your web account and then sync to your smartphone

The HR4 and HR5 readers connect directly to your smartphone and then sync to your web account

## Connecting your HR Hand Held EID Tag Reader to your Animal Performance App

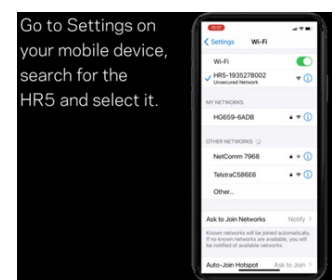
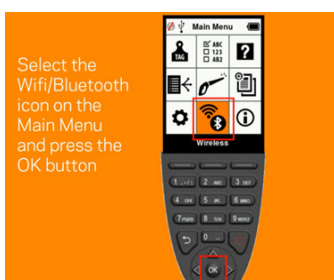
1

To move sessions onto the HR, sync your smartphone App to the web account first to make sure it is up to date



2

To connect the HR Hand Held EID Tag Reader to your phone via Wi-Fi follow the steps below



## 5 Quick Start Guide

3

In the Gallagher Animal Performance App, select the Menu icon then 'Device Configuration'.

Tap on the image of the HR device to connect.

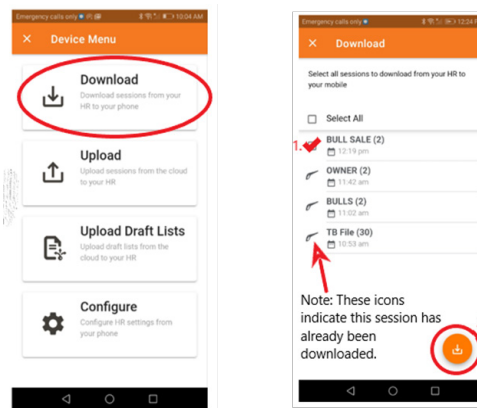
It will synchronise to allow you to download sessions from the HR or upload sessions and draft lists to the HR.

### Download sessions from HR Hand Held EID Tag Reader to Animal Performance App

1

When you select **download** you will see a list of sessions appear that are present on your HR reader. Select the sessions that you want and click the icon in the bottom corner to copy across to your Animal Performance App.

**Note:** Do not let your phone go to sleep during the transfer – it will drop the connection to the HR and the transfer will not be completed



2

Sync to the web App to view the data on your web account and TW Weigh Scale (once the TW has also been synched).

## 6 Quick Start Guide

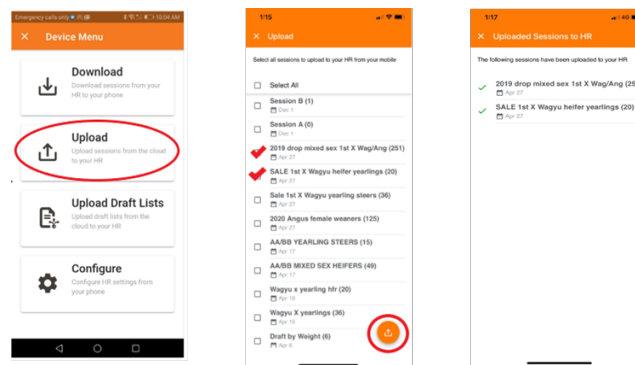
# Upload sessions from web account to HR Hand Held EID Tag Reader

1

When you select **upload** you will see a list of sessions on your smartphone that you can move onto the HR Hand Held Reader

Select the sessions you wish to move across and tap on the upload icon in the bottom right corner to transfer to the HRx

**Note:** Do not let your smartphone go to sleep during the transfer – it will lose the connection to the HRx and the transfer will not work



## Additional resources

For more information on how to use your TW Weigh Scale or HR Hand Held EID Tag Reader with our Gallagher Animal Performance Software, **[check out the videos at here.](#)**

For more help, contact the **Gallagher Customer Support Team** on weekdays from 8.30am - 5.00pm on 1800 425 525.