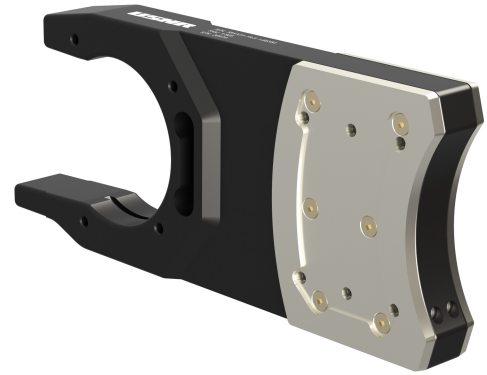


Automatic Guide Dresser



Programmable for all the guide arms used in the mill



User-friendly interface

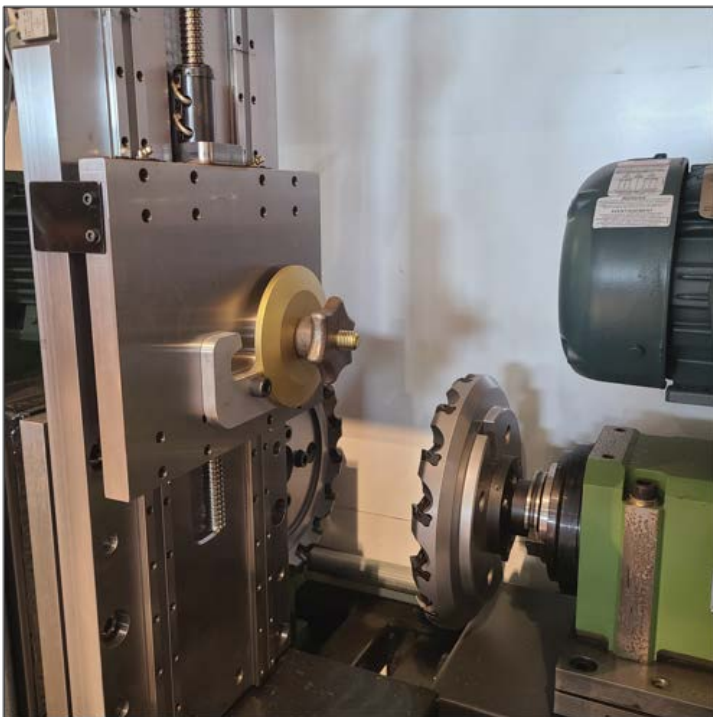
The Burton Mill Solutions Auto Dresser for Circle Saw Guide Arms represents the next evolution in saw guide dressing. This fully enclosed CNC dresser is engineered to be successfully operated by non-technical users:

- Load the babbited guide arm onto the machine
- Simply select the guide from the list of preset guides for your mill
- Close the door and start the cycle
- Press "Next" and "Previous" on the touch screen controls to select another guide

The Auto Dresser automatically adjusts to the target size.

The Auto Dresser can self-recalibrate after each cut. The machine can quickly and seamlessly be switched from one style of guide arm to another. Each mill guide is programmed into the machine with the easy-to-use interface. Once the cycle is completed, the operator inputs the actual machined size and the Auto Dresser will self-adjust for the next cut.

Burton Mill Solutions Auto Dress Specifications	
Size	84" W (213 cm) x 36" D (91.5 cm) x 74" T (188 cm)
Electrical	480 V 3 ph 15 amp
Weight	Aprox. 1,962 lbs (890 kg)
Cutters	Four edge indexable carbided



Burton manufactures high-quality aluminum and steel saw guides to machine OEM specifications. We use superior Type 3 (MIL-A-8625, Class 1) hard anodizing on all aluminum guides. Each Guide is engraved with our logo, part number, serial number, and thickness.

The Auto Dresser's Robust Safety and Lock Out system uses 300 ft lb of electromagnetic force to secure the door. The machine utilizes easy-to-replace four-sided carbide milling cutters. The control panel has built-in preventative maintenance reminders.

