



MODEL T-280 TOWER SPECIFICATIONS





TOWER SPECIFICATIONS: MODEL T-280

Cooling Tower Systems, Inc.

| Design and Operating Conditions | | Water Distribution System Construction Materials | |
|---|---------------------------------|--|---------------------|
| Tower Type: | Counter Flow Induced Draft | Stand Pipe: | PVC |
| Water Flow Rate (GPM): | 236 GPM | Sprinkler Head: | AC |
| Entering Water Temperature | 95°F | Sprinkler Pipes: | PVC |
| Leaving Water Temperature | 85°F | Mechanical Equipment | |
| Wet Bulb Temperature: | 75°F | Fan Unit: | One Unit per Tower |
| Total Fan BHP: | 2 HP | Type: | Axial Flow |
| Total Pump Head: | 6.6' | Manufacturer: | CTS |
| Drift Loss of Water Flow: | 0.1% | Diameter: | 46 1/16" |
| Evaporation Loss of Water Flow: | 0.93% | Blade Material: | AC |
| Design Wind Load: | 41 lbs/sq. ft. | Hub Material: | AC |
| Structural Details | | Nominal Air Volume: | 18,900 CFM |
| Overall Diameter: | 85 5/8" | Fan Motor | |
| Overall Height: | 79 3/8" | Number of motors: | One Unit per Tower |
| Dry Weight: | 642 lbs. | Type: | Induction |
| Operating Weight: | 1,588 lbs. | Manufacturer: | CTS |
| Basic Tower Construction Materials | | Insulation: | F Class |
| Tower Support Frame Assembly | - | Rated HP: | 2 HP |
| Casing: | FRP | Voltage and phase: | 220/440V/3 |
| Casing Supporters | HDGS | Piping Connections | |
| Cold Water Basin | FRP | Primary Water Inlet Diameter | 4" |
| Filling: | PVC | Primary Water Outlet Diameter: | 4" |
| Filling Supports: | HDGS | Auto fill inlet diameter: | 3/4" |
| Fan Guard | HDGS | Quick fill inlet diameter: | - |
| Mechanical Equipment Supports: | HDGS | Overflow outlet diameter: | 1" |
| Inlet Louvers: | PVC | Drain diameter: | 1" |
| Bolts, Nuts & Washers: | STS | Water Flow (GPM): | 236 GPM |
| Materials Key | | | |
| FRP | Fiberglass Reinforced Polyester | STS | Stainless Steel |
| HDGS | Hot Dipped Galvanized Steel | AC | Aluminum Alloy Cast |

Cooling Tower Systems, Inc.

3170 Mercer University Dr., Macon, GA 31204

TF: 800.752.1905

F: 478.755.8304

www.coolingtowersystems.com

info@coolingtowersystems.com



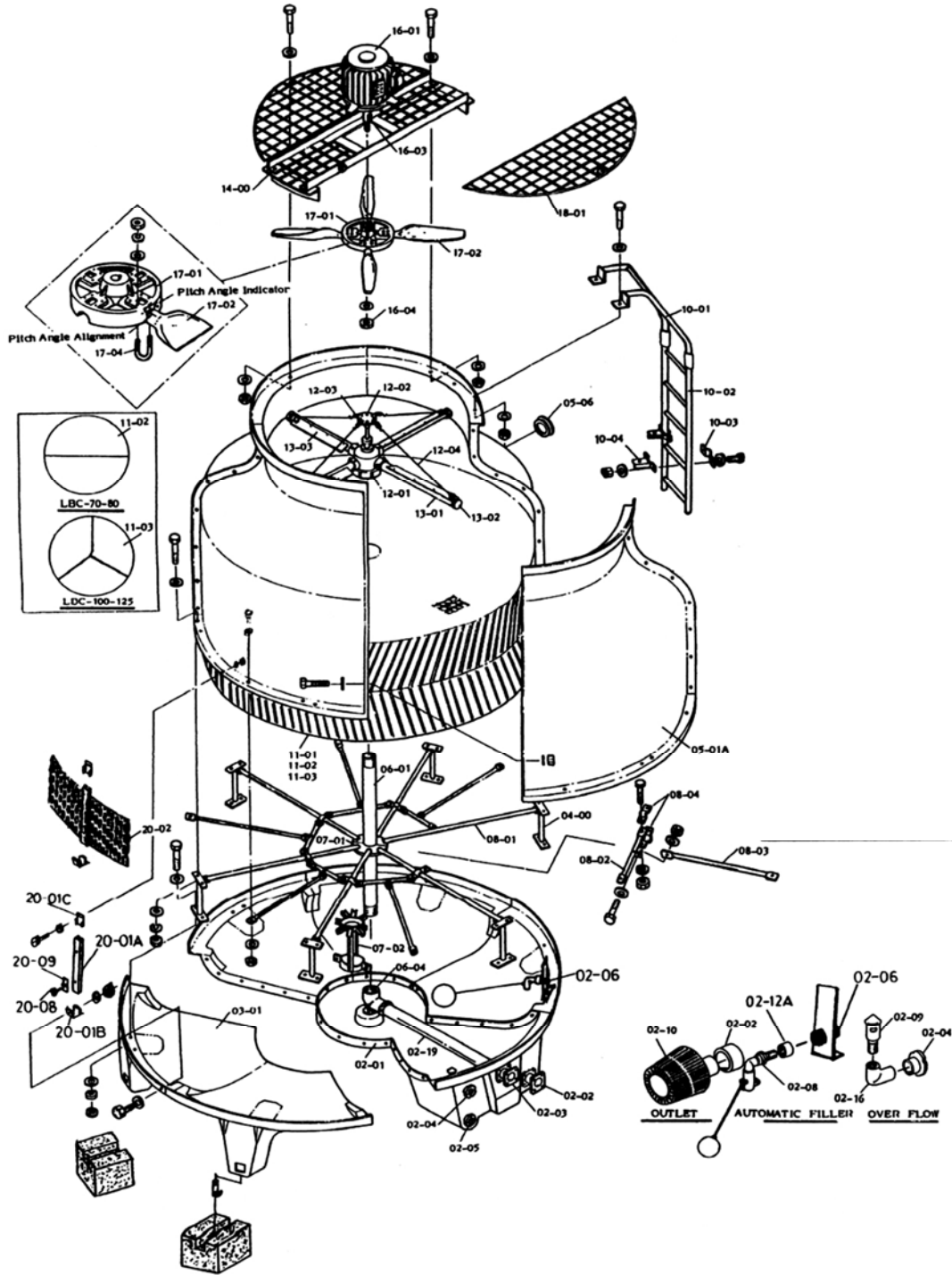
PARTS LIST: MODEL T-280

| FOR ASSEMBLY DIAGRAM | | | | FOR ASSEMBLY DIAGRAM | | | |
|----------------------|--------------------------|-----|--|----------------------|----------------------|-------|--|
| Ref. No. | Description | QTY | | Ref. No. | Description | QTY | |
| 02-01 | Water Sump | 1 | | 10-01 | Ladder (A Section) | 1 | |
| 02-02 | Outlet Nozzle | 1 | | 10-02 | Ladder (B Section) | 1 | |
| 02-03 | Inlet Nozzle | 1 | | 10-03 | Ladder Bracket - A | 2 | |
| 02-04 | Over Flow Nozzle | 1 | | 10-04 | Ladder Bracket - B | 2 | |
| 02-05 | Drain Nozzle | 1 | | 11-02 | Filling 1/2 Section | 4 | |
| 02-06 | Automatic Filler Nozzle | 1 | | 11-03 | Filling 1/3 Section | - | |
| 02-07 | Quick Filler Nozzle | 1 | | 12-01 | Sprinkler Head | 1 | |
| 02-08 | Float Valve Assembly | 1 | | 12-02 | Center Post | 1 | |
| 02-09 | Over Flow | 1 | | 12-03 | Turnbuckle | 4 | |
| 02-10 | Suction Strainer | 1 | | 12-04 | Tension Wire | 4 | |
| 02-12A | Z Type Connector | 1 | | 13-01 | Sprinkler Pipe | 4 | |
| 02-16 | Elbow | 1 | | 13-02 | End Cap | 4 | |
| 02-19 | Inlet Pipe | 1 | | 13-03 | Eliminator | 4 | |
| 03-01 | Water Basin | 5 | | 14-00 | Motor Frame Assembly | 4 | |
| 04-00 | Casing Supporter | 6 | | 16-01 | Fan Motor | 1 | |
| 05-01A | Casing | 4 | | 16-03 | Fan Key | 1 | |
| 05-06 | Hand Hole Cover | 1 | | 16-04 | Fasten Nut | 1 | |
| 06-01 | Stand Pipe | 1 | | 17-01 | Fan Hub | 1 | |
| 06-04 | Stand Pipe Base | 1 | | 17-02 | Fan Blade | 3 | |
| 07-01 | Stopper | 1 | | 17-04 | U-Bolt | 6 | |
| 07-02 | Column | - | | 18-01 | Fan Guard | 2 | |
| 08-01 | Filling Supporter - A | 6 | | 20-02 | Inlet Louver | 8 | |
| 08-02 | Filling Supporter - B | 6 | | 20-01-A | Louver Supporter | 8 | |
| 08-03 | Filling Supporter - C | 6 | | 20-01-B | Down Plug | 8 | |
| 08-04 | Fill Supt. Clamping Band | 12 | | 20-01-C | Up Plug | 8 | |
| | | | | 20-08 | Wing Bolt | 16 | |
| | | | | 20-09 | Plastic Washer | 16 | |
| | | | | OTHERS | Bolts & Nuts | 1 SET | |



Cooling Tower Systems, Inc.

ASSEMBLY DIAGRAM: MODEL T-280



Cooling Tower Systems, Inc.

3170 Mercer University Dr., Macon, GA 31204

TF: 800.752.1905

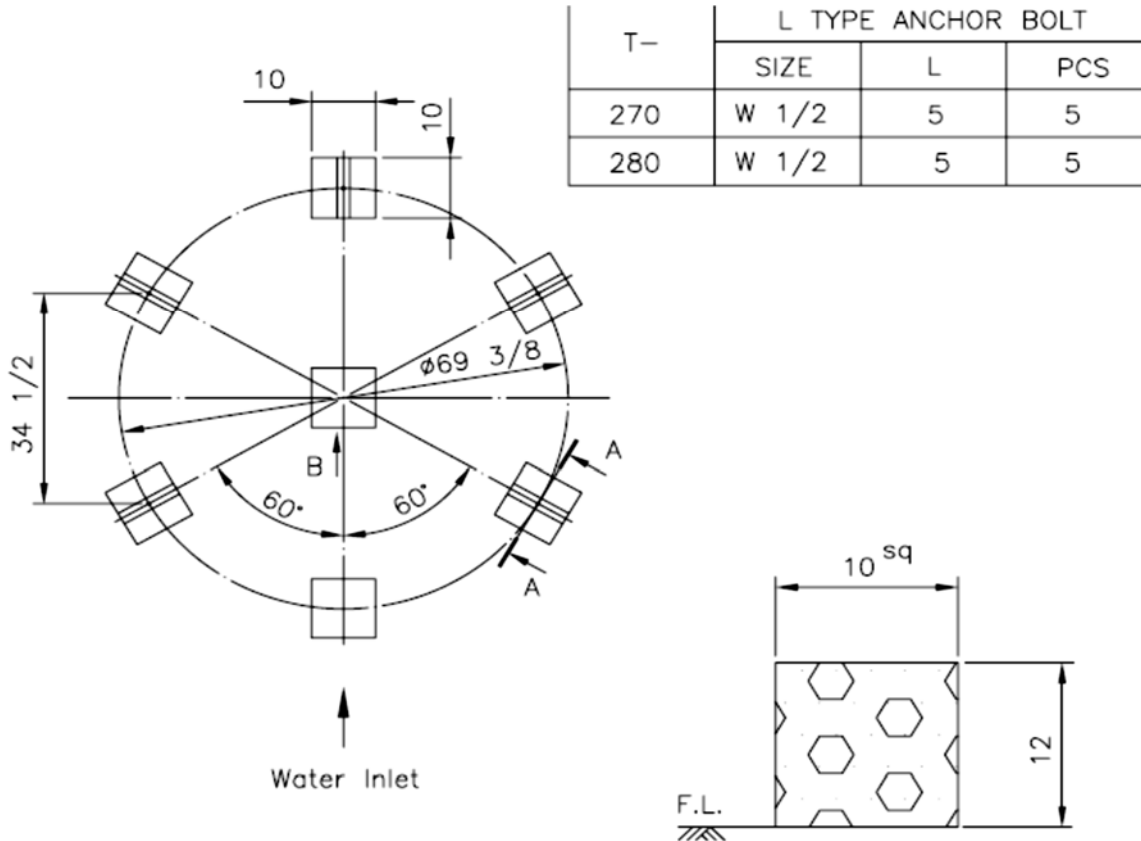
F: 478.755.8304

www.coolingtowersystems.com

info@coolingtowersystems.com

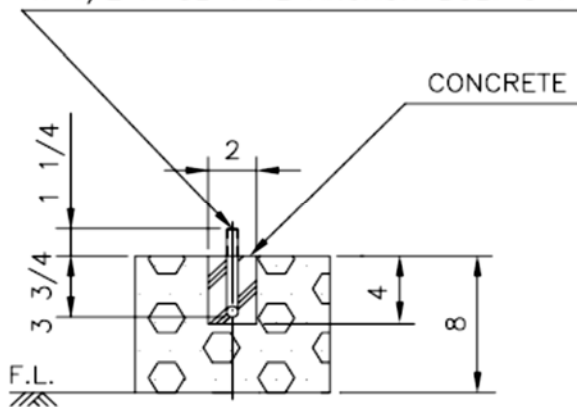


FOUNDATION DRAWING: MODEL T-280 Cooling Tower Systems, Inc.



B VIEW

1 1/4L ALL THREAD PROJECTION
W 1/2 X 5L TYPE ANCHOR BOLT 5 PCS



A-A SECTION

Cooling Tower Systems, Inc.

3170 Mercer University Dr., Macon, GA 31204

TF: 800.752.1905

F: 478.755.8304

www.coolingtowersystems.com

info@coolingtowersystems.com