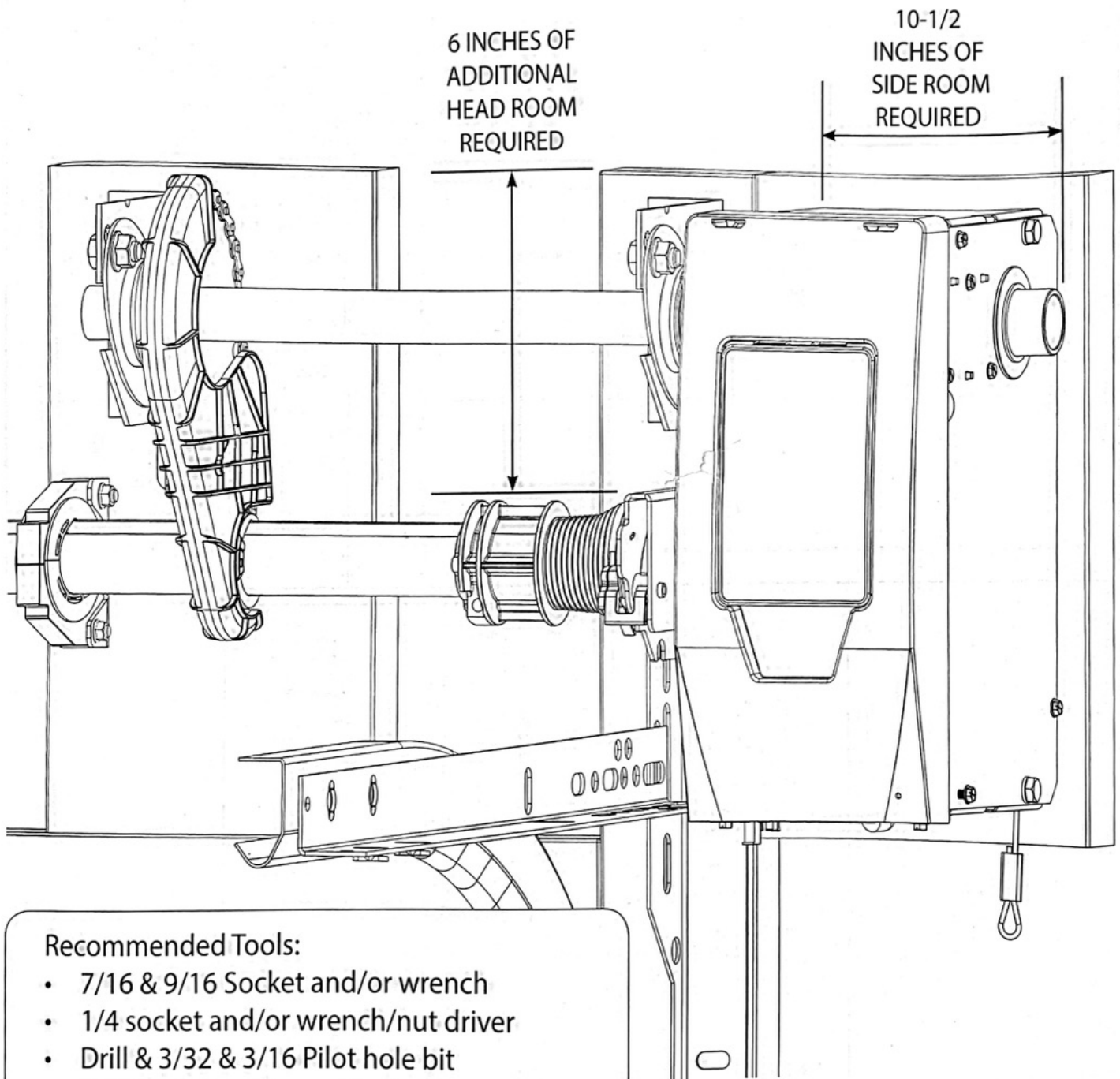


# TORQUEMASTER® INSTALLATION KIT INSTRUCTIONS FOR RESIDENTIAL WALLMOUNT OPENERS

RIGHT HAND MOUNTING.....PAGE ..... 1 - 5

LEFT HAND MOUNTING.....PAGE.....6 - 10

LEFT HAND SINGLE SPRING MOUNTING....PAGE..... 11 - 15



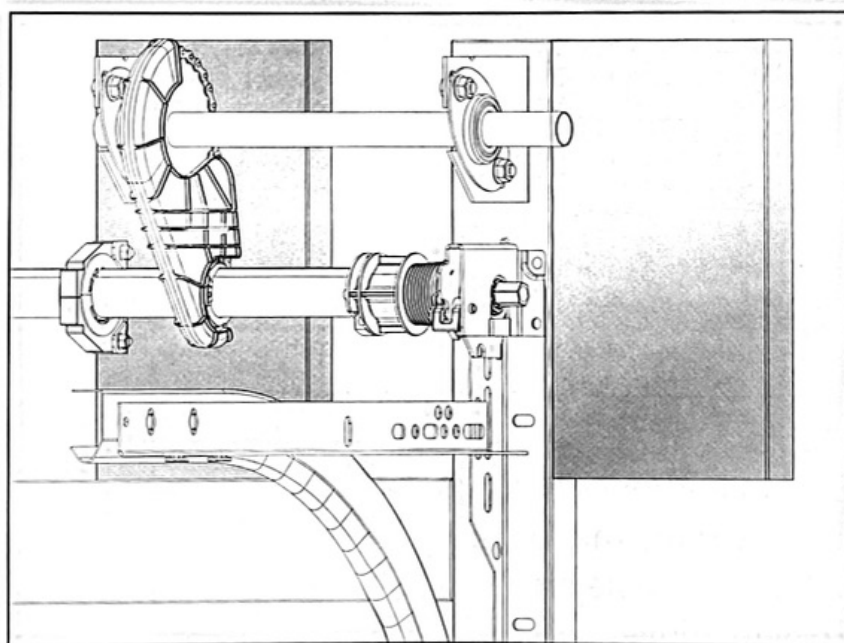
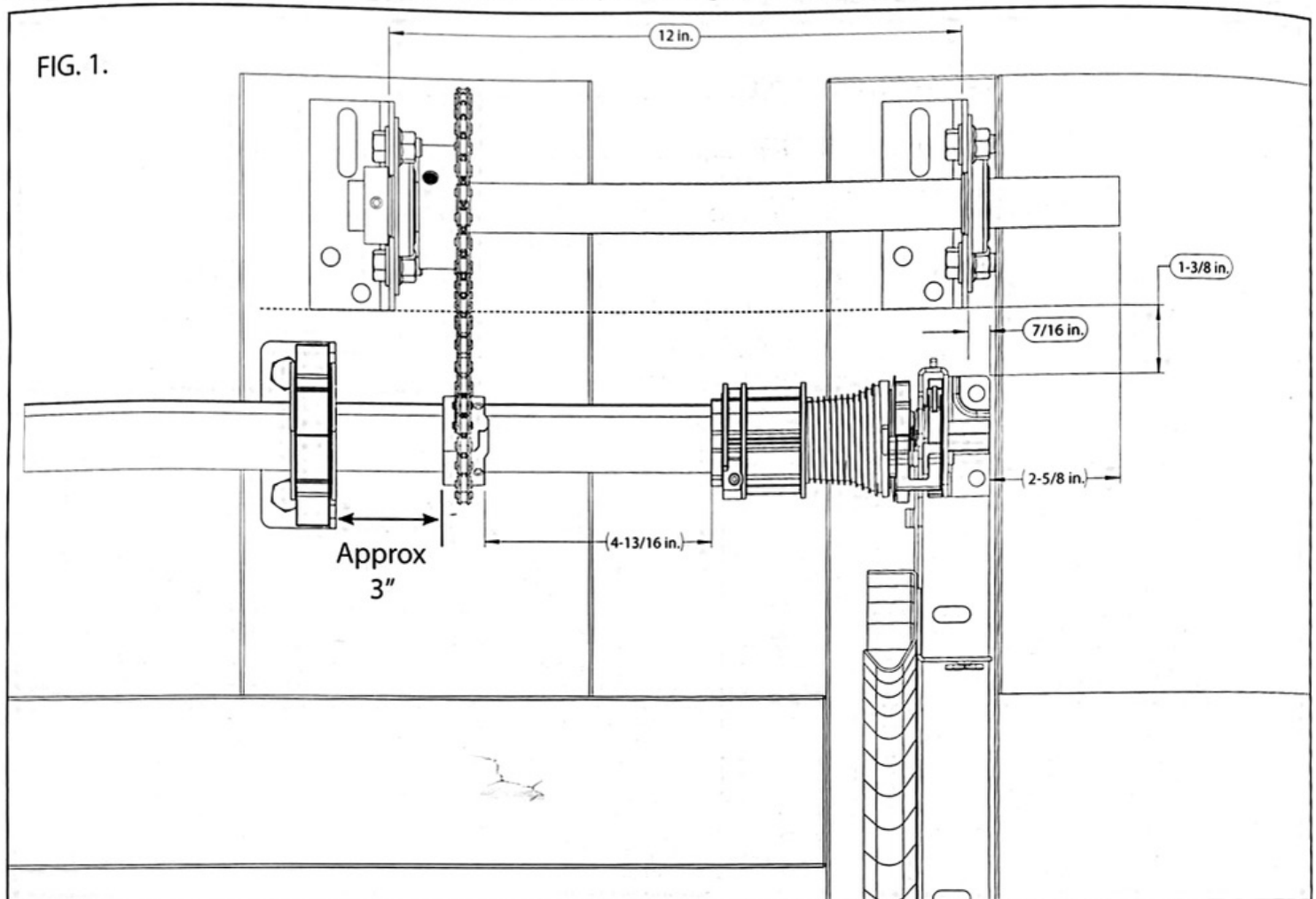
### Recommended Tools:

- 7/16 & 9/16 Socket and/or wrench
- 1/4 socket and/or wrench/nut driver
- Drill & 3/32 & 3/16 Pilot hole bit
- 3/32 Common Screwdriver
- 7/64 & 5/32 allen wrench

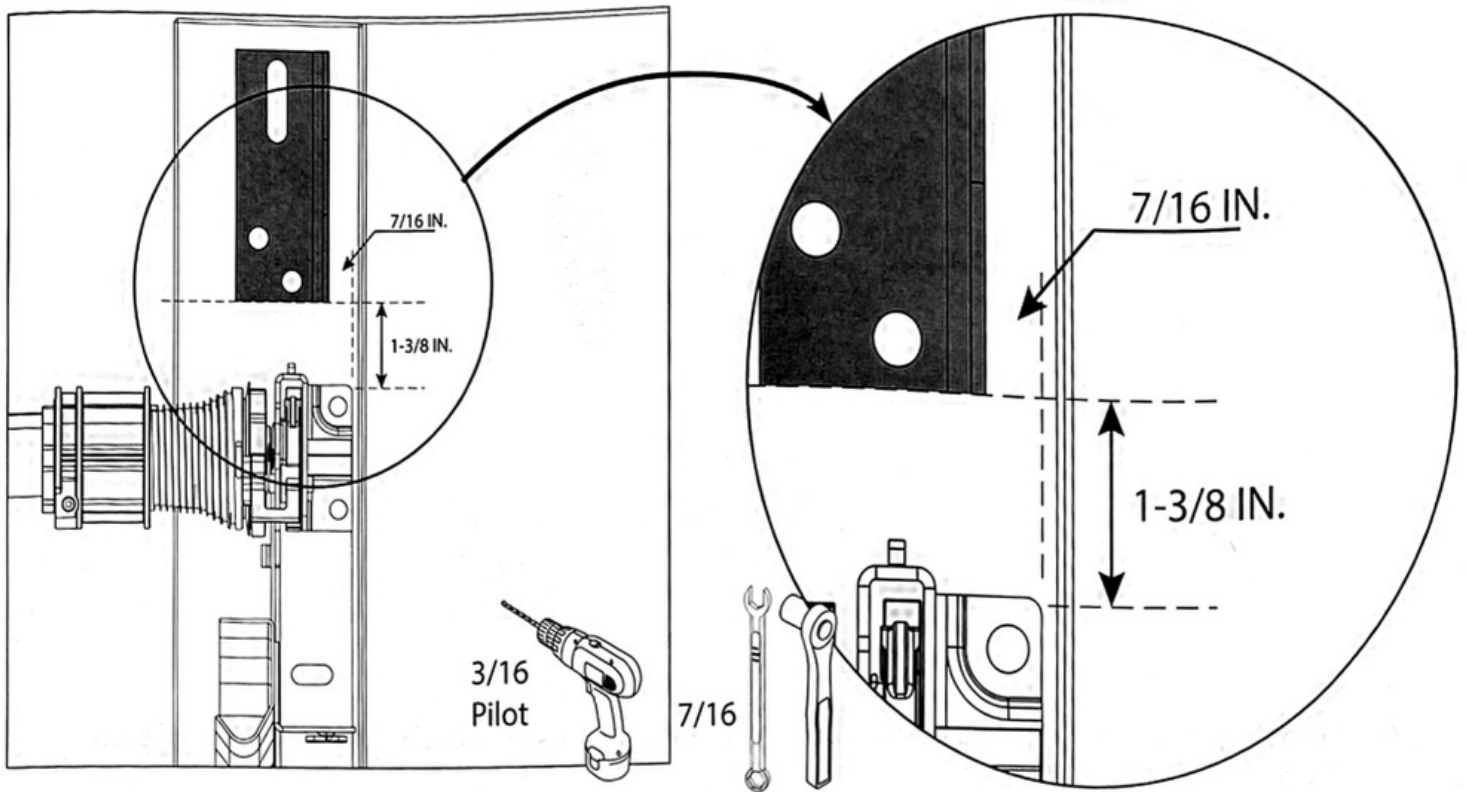
# TORQUEMASTER® INSTALLATION KIT INSTRUCTIONS.

## RIGHT HAND MOUNT

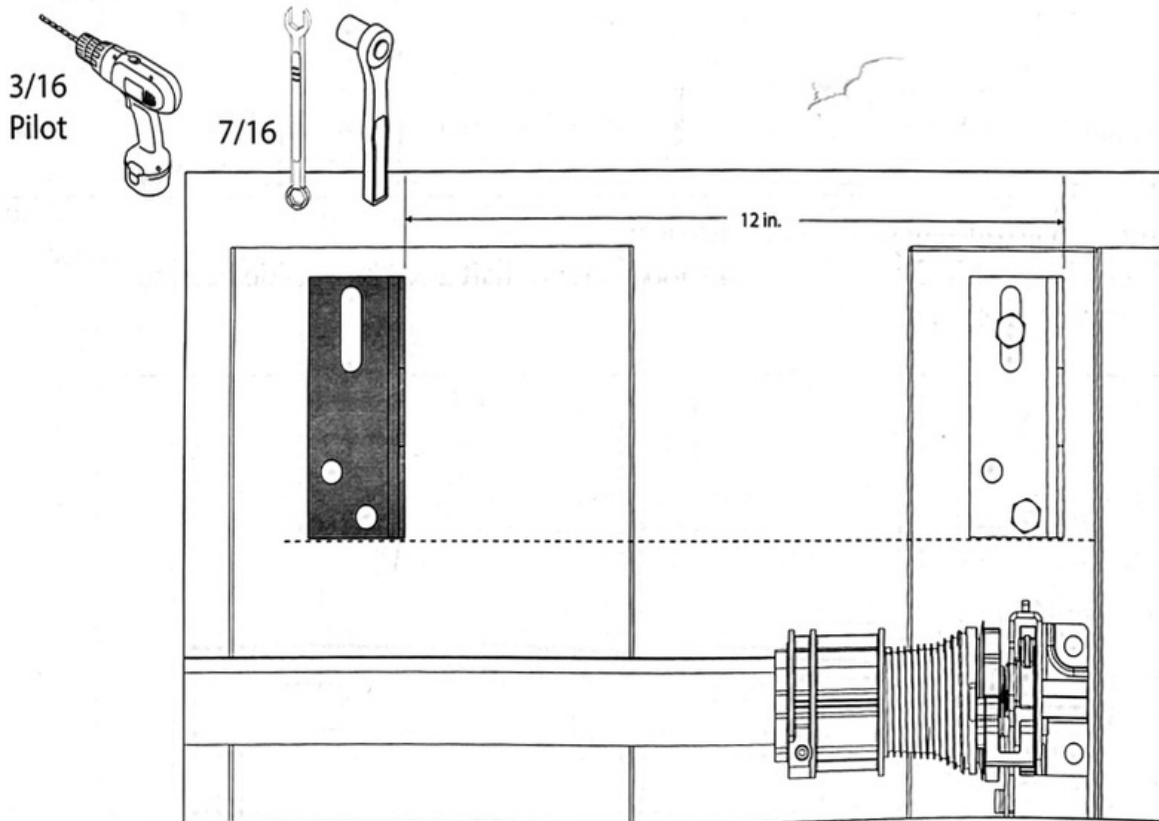
Figure 1 shows all major and critical dimensions pertaining to this installation.



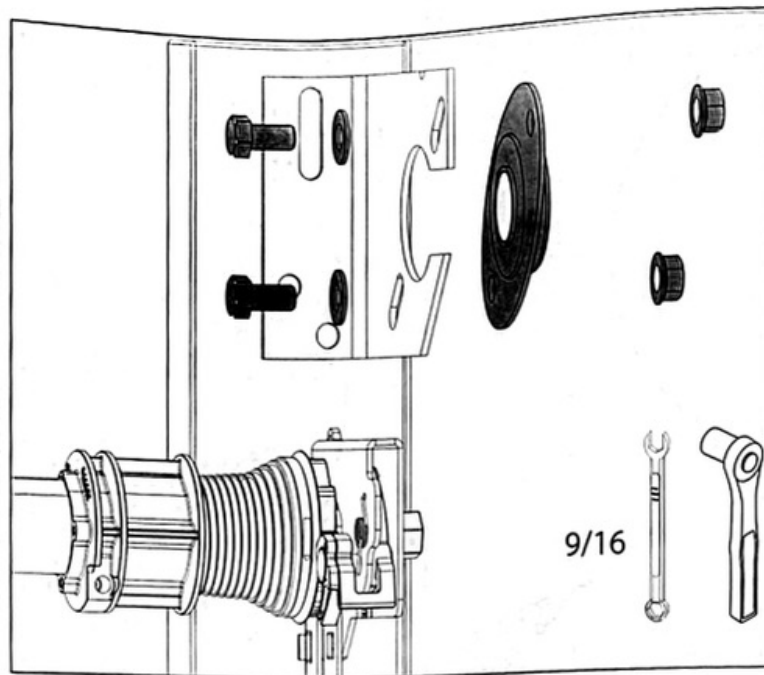
1. Prepare the mounting surfaces for mounting this kit and the opener. Solid mounting material or garage framing that is flush with the door track mounting surface should be used.



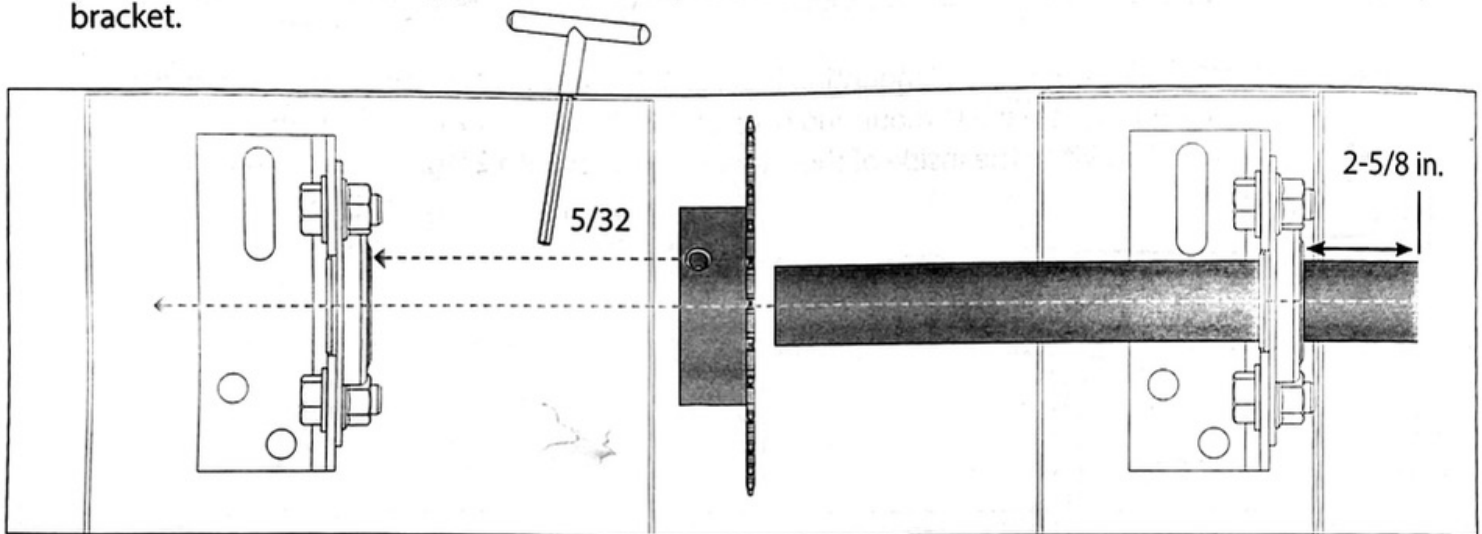
2. Measure up from the TorqueMaster® mounting bracket 1-3/8 in. and mark a level horizontal line.
3. Measure in from the TorqueMaster® mounting bracket 7/16 in. and mark a vertical line.
4. Install bracket from this kit to the inside of the intersecting lines with 2 lag screws provided.



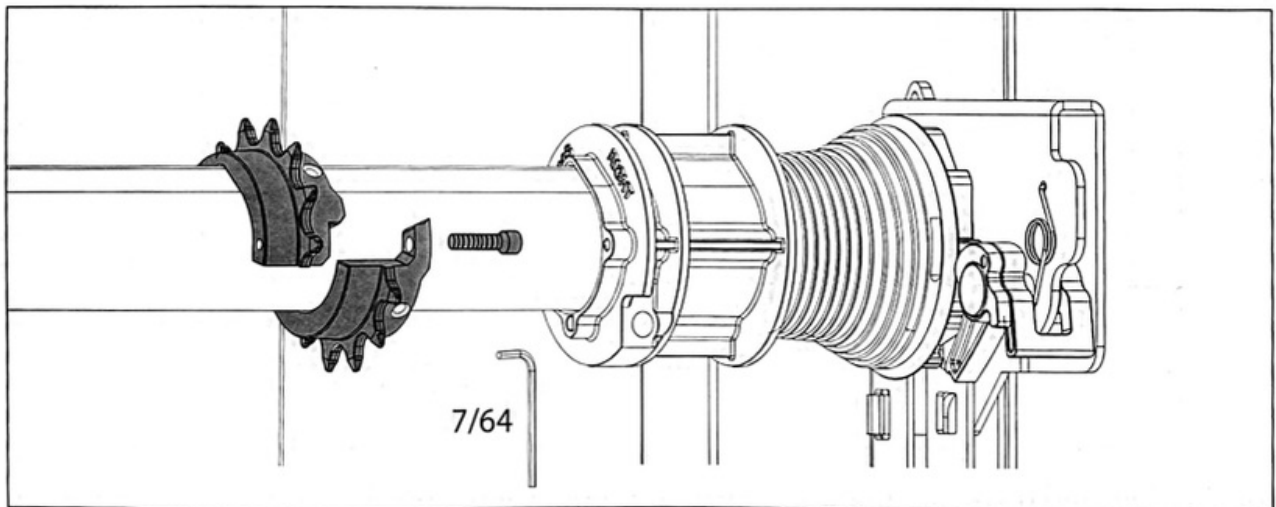
5. Measure in 12 in. and mark mounting surface for position of inner bracket.
6. Level second bracket to first and install bracket with 2 lag screws provided.



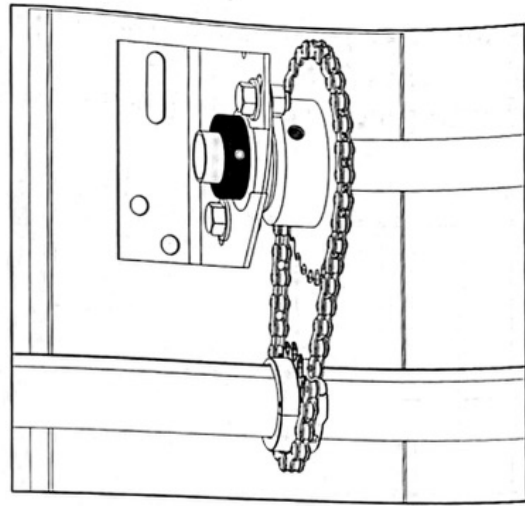
7. Loosely install oval bearing plates with bolts, washers and nuts provided on the right side of each bracket.



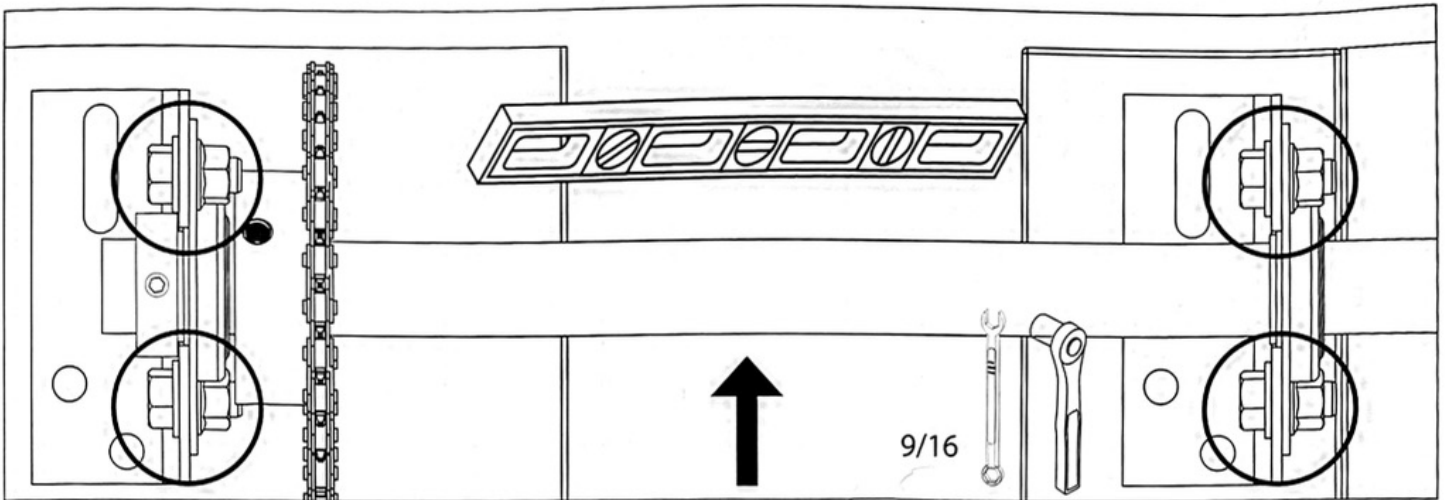
8. Slide 28T sprocket onto drive shaft and slide into bearings.  
 9. Position 28T sprocket against the inside bearing and position shaft 2-5/8 in. outside bearing.  
 10. Tighten 28T sprocket set screws.



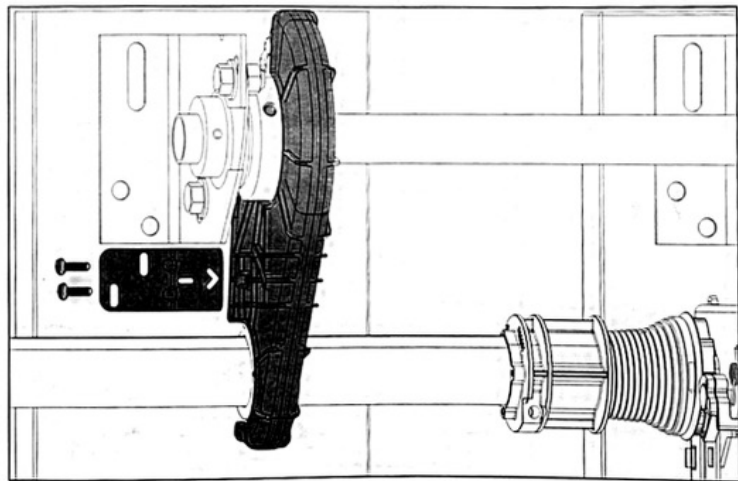
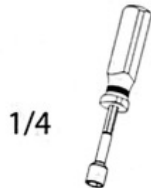
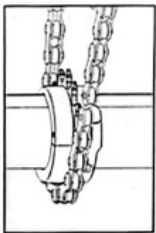
11. Install 2-piece sprocket onto TorqueMaster® shaft and assemble using a 7/64 in. allen wrench.



12. Ensure 28T sprocket is seated against inside bearing.
13. Install Set Collar against outside of bearing
14. Install chain onto sprockets using included master link.



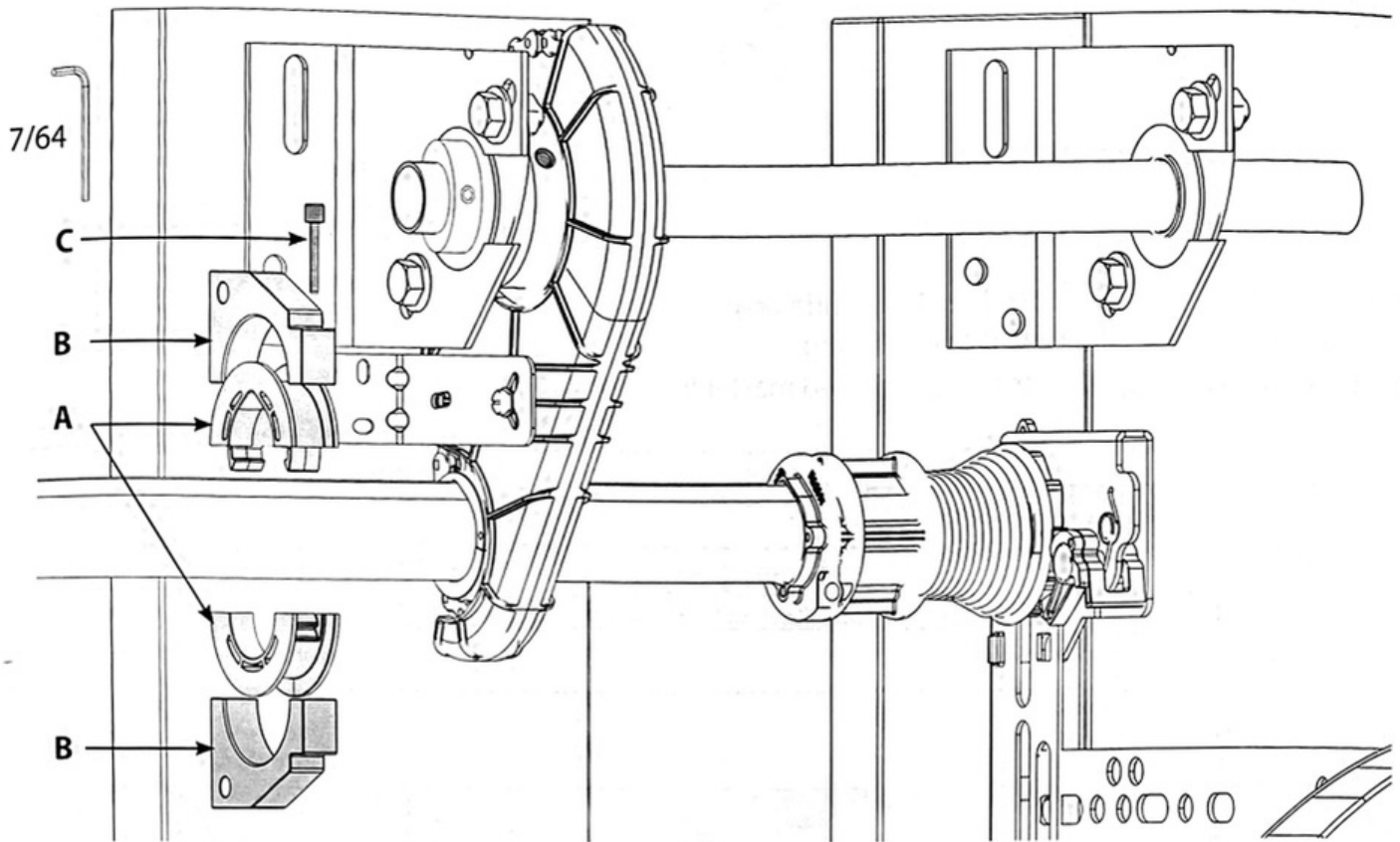
15. Align sprockets and push up on drive shaft to tighten chain, ensure shaft is level and tighten bearing bolts and nuts.
16. Check alignment of chain and sprockets and tighten 2-piece sprocket set screws (3/32 common screwdriver).



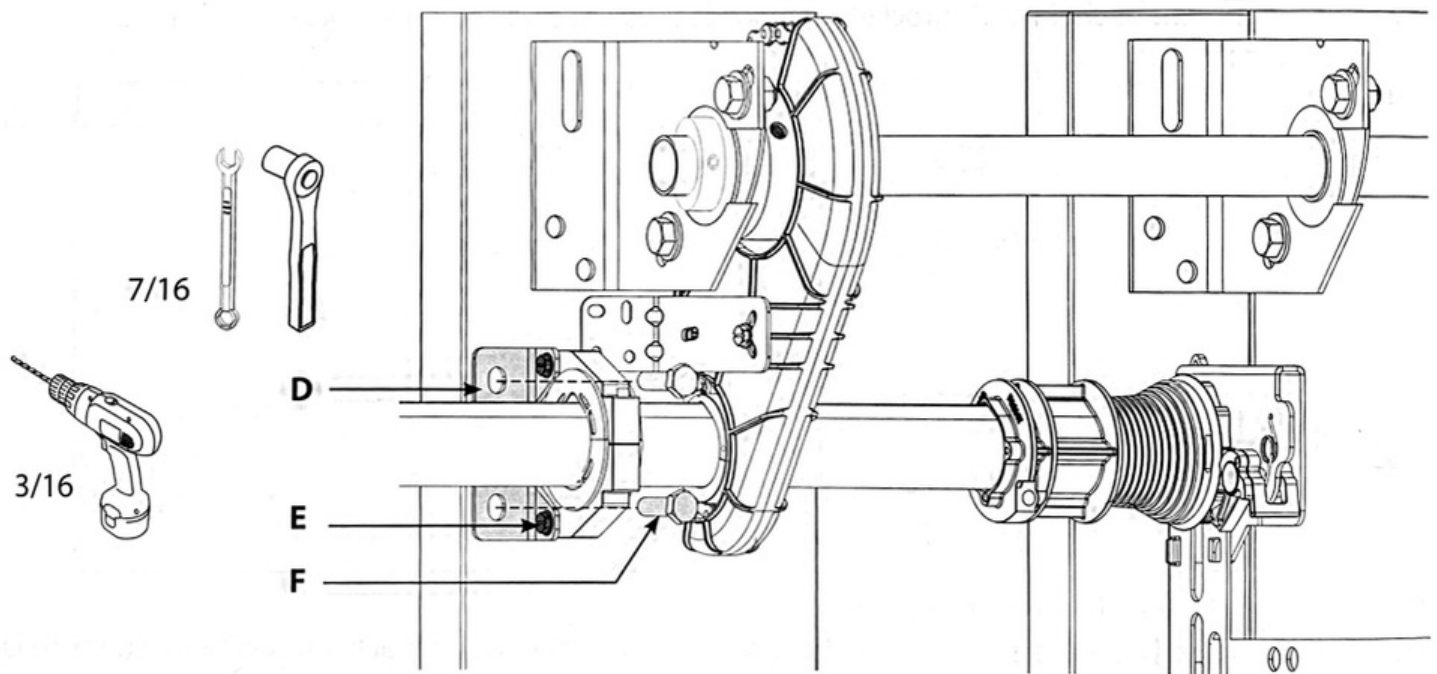
17. Install supplied bracket screws into cover.
18. Align cover and bracket assembly over chain. Mark, pre drill and install bracket to wall with supplied lag screws. Adjust cover for clearance and tighten mounting screws.

**Install bushing assembly onto door shaft;**

19. Install bushings (A) over door shaft and snap the two halves together.
20. Install upper and lower bushing housings (B) with supplied cap head screw (C).



21. Install mounting bracket (D) to bushing housings with supplied bolts and flange nuts (E).
22. Install mounting bracket to wall using 2 lag screws (F) provided.

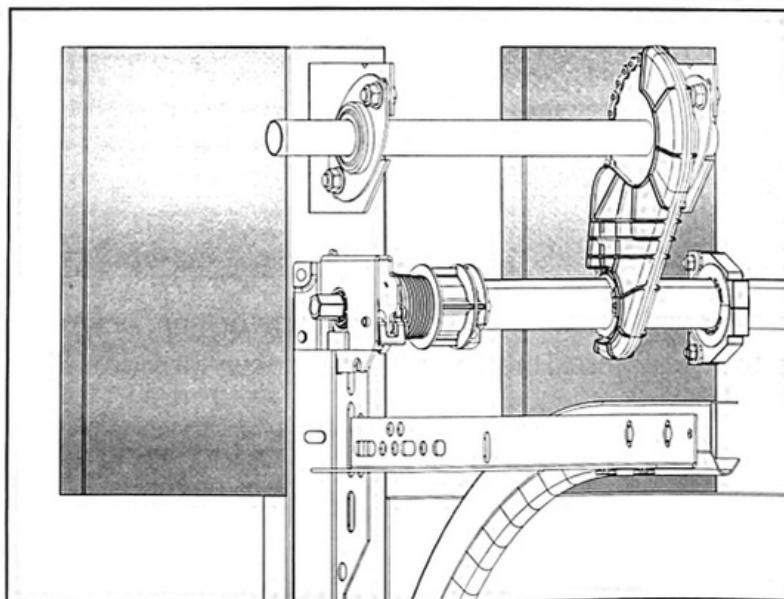
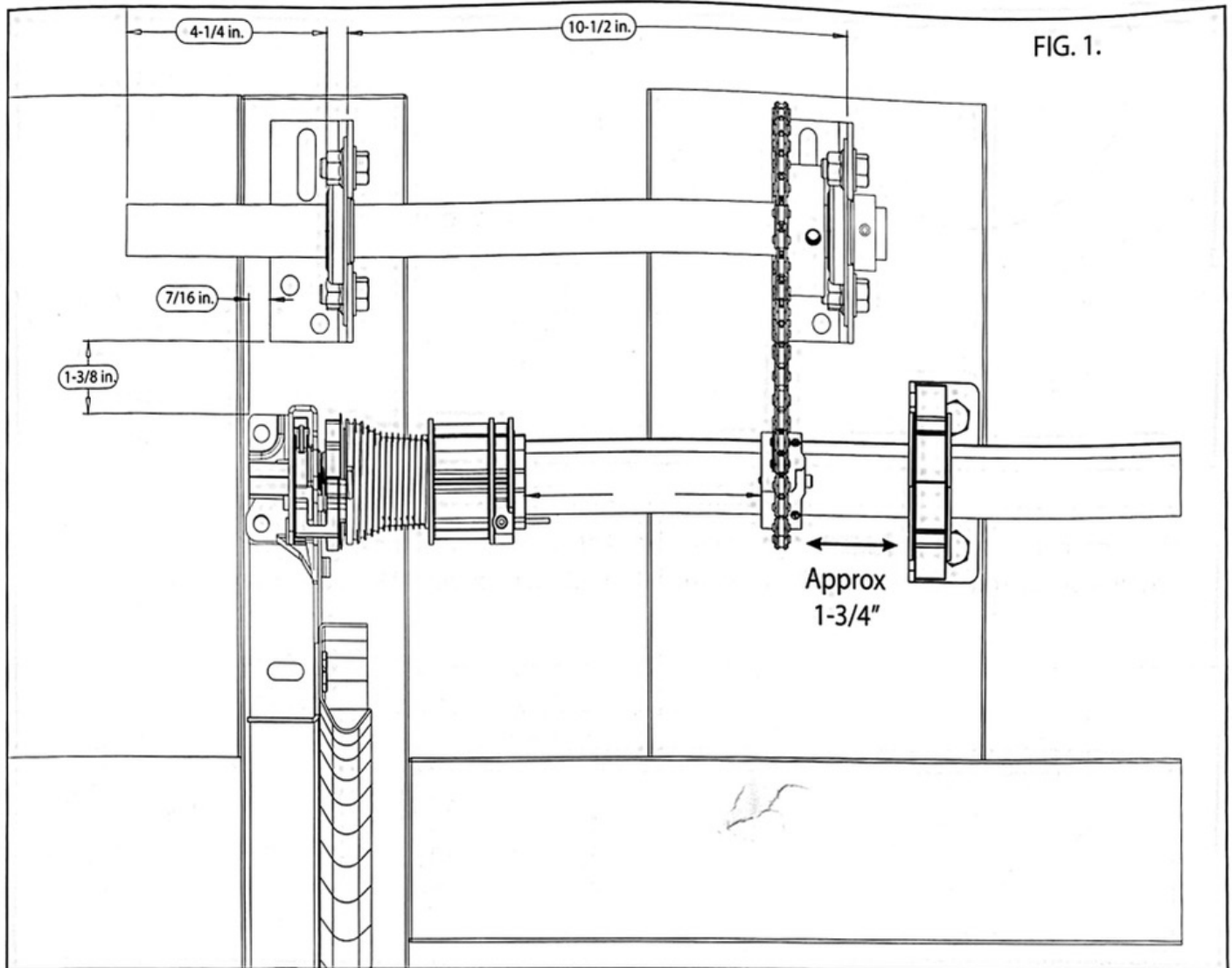


23. Install opener onto drive shaft per openers installation manual instructions.

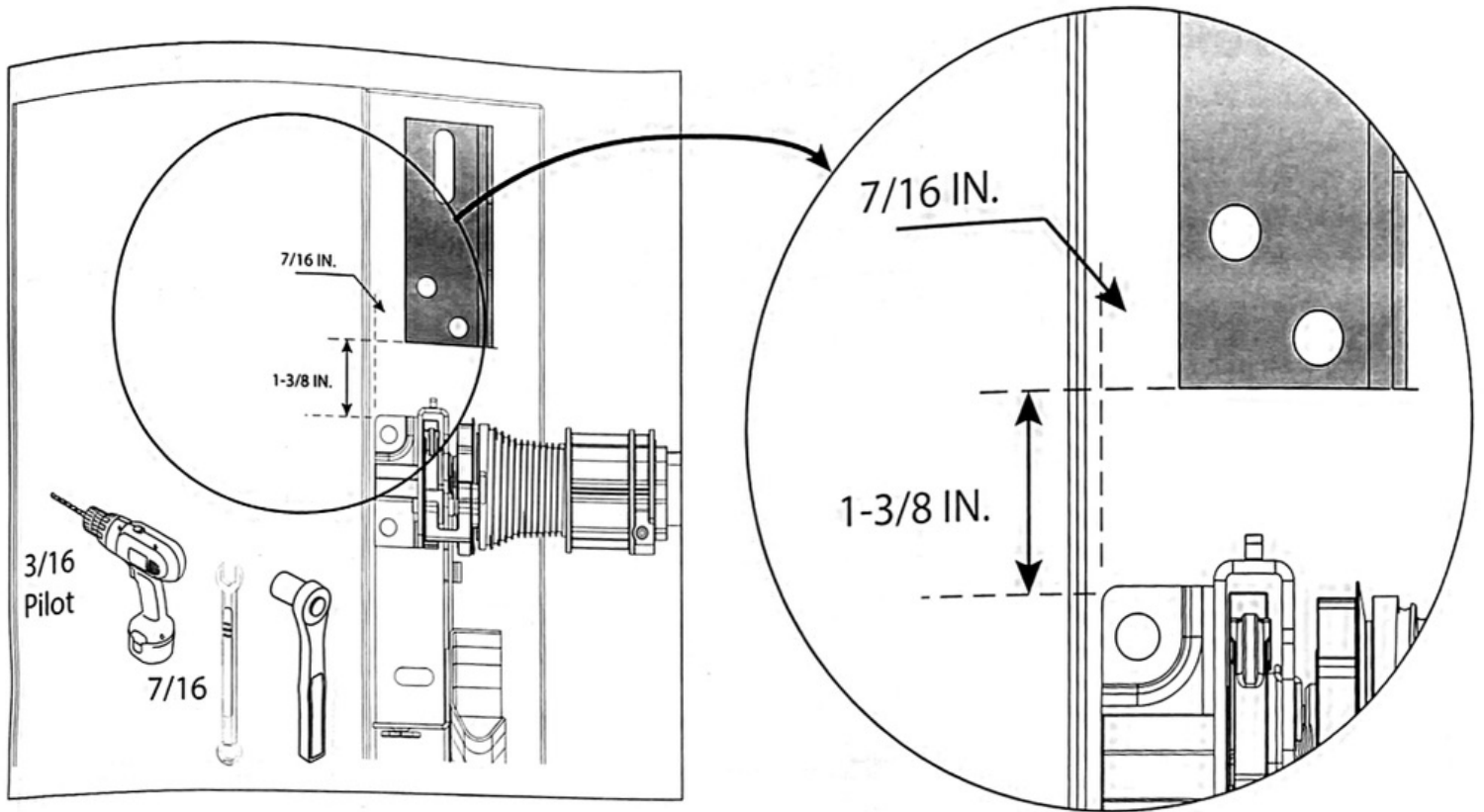
# TORQUEMASTER® INSTALLATION KIT INSTRUCTIONS.

## LEFT HAND MOUNT

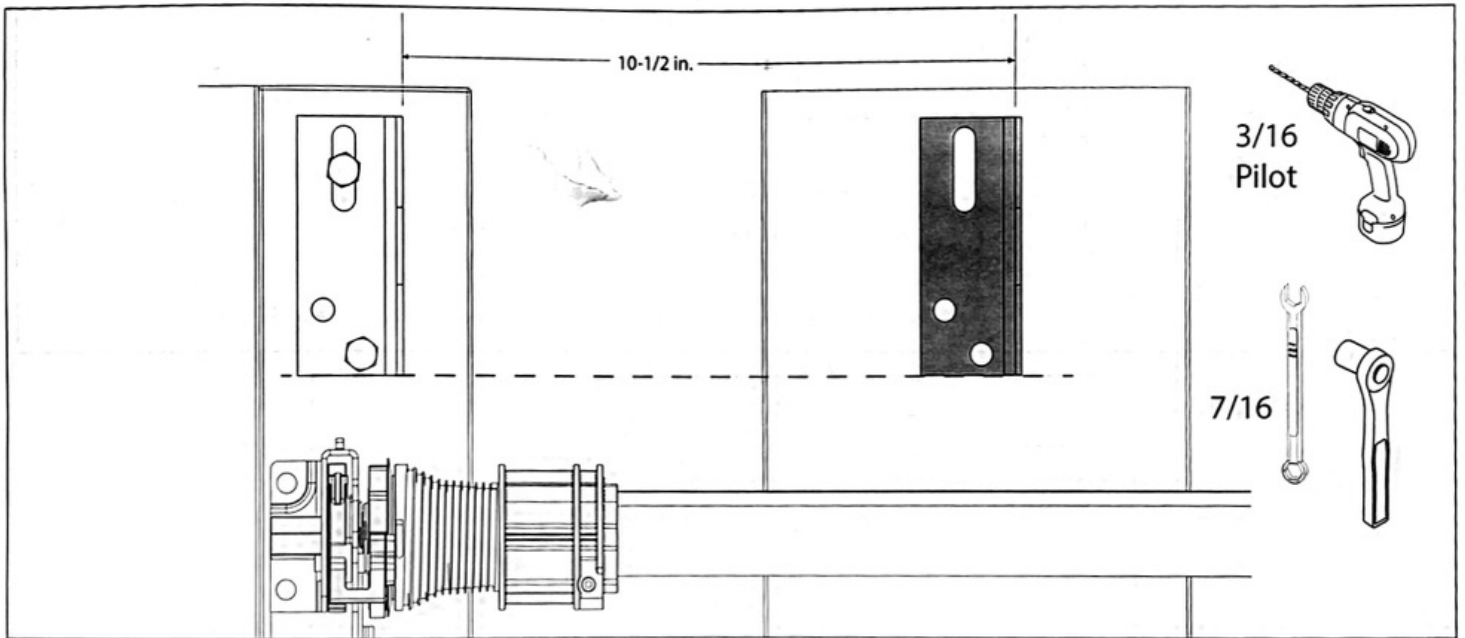
Figure 1 shows all major and critical dimensions pertaining to this installation.



1. Prepare the mounting surfaces for mounting this kit and the opener. Solid mounting material or garage framing that is flush with the door track mounting surface should be used.

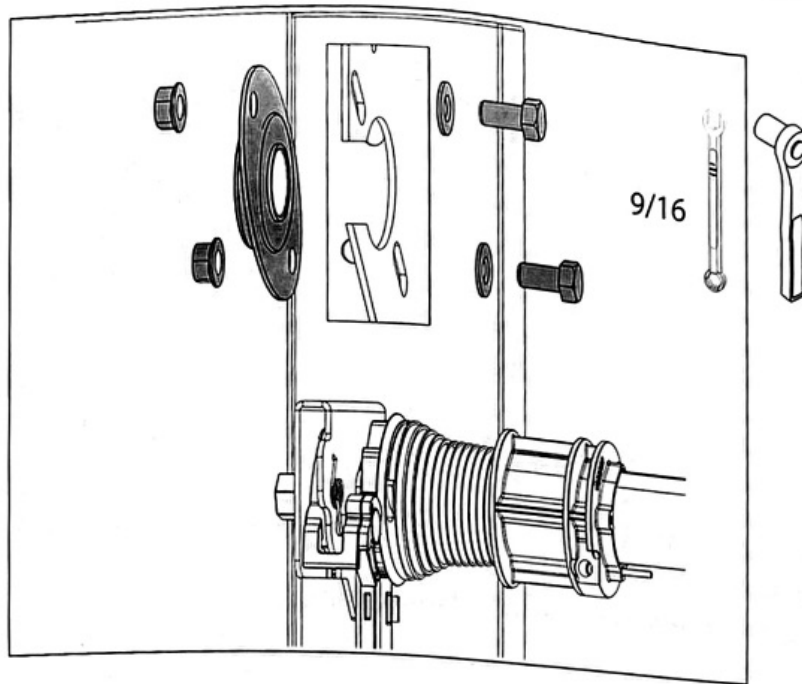


2. Measure up from the TorqueMaster® mounting bracket 1-3/8 in. and mark a horizontal line.
3. Measure in from the TorqueMaster® mounting bracket 7/16 in. and mark a vertical line.
4. Install bracket from this kit to the inside of the intersecting lines with 2 lag screws provided.

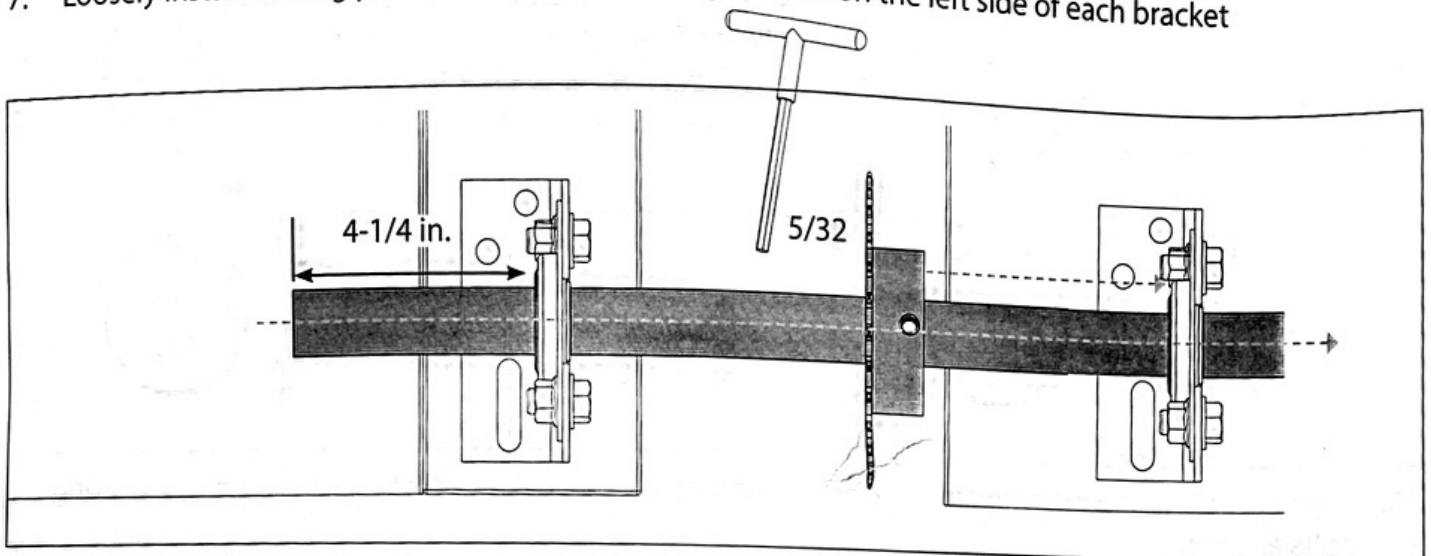


5. Measure in 10-1/2 in. and mark mounting surface for position of inner bracket.
6. Level second bracket to first and install bracket with 2 lag screws provided.

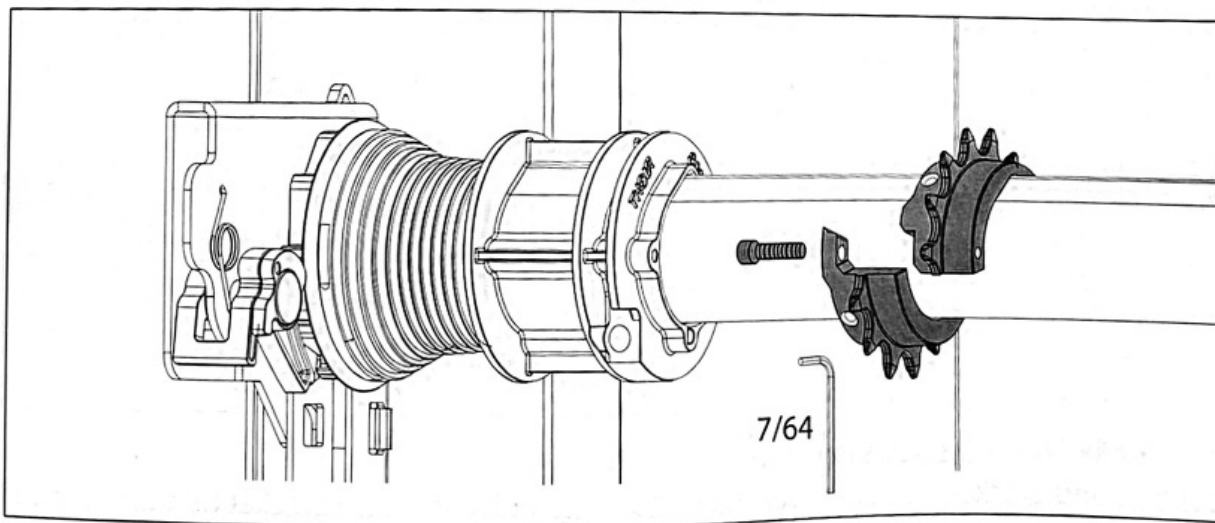




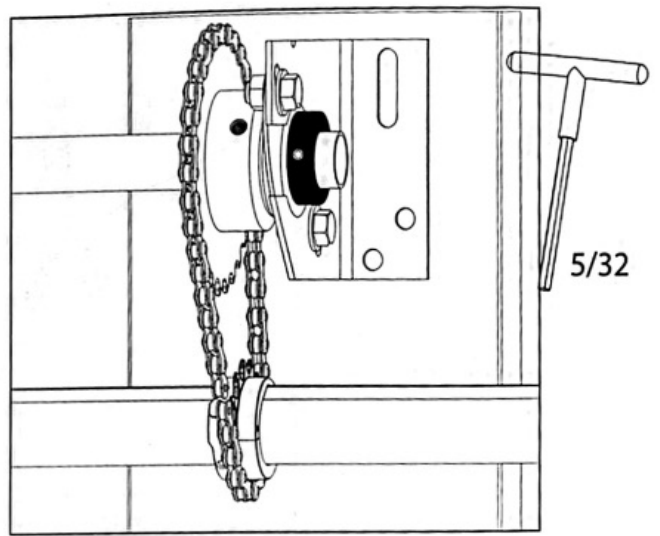
7. Loosely install bearing plates with bolts and nuts provided on the left side of each bracket



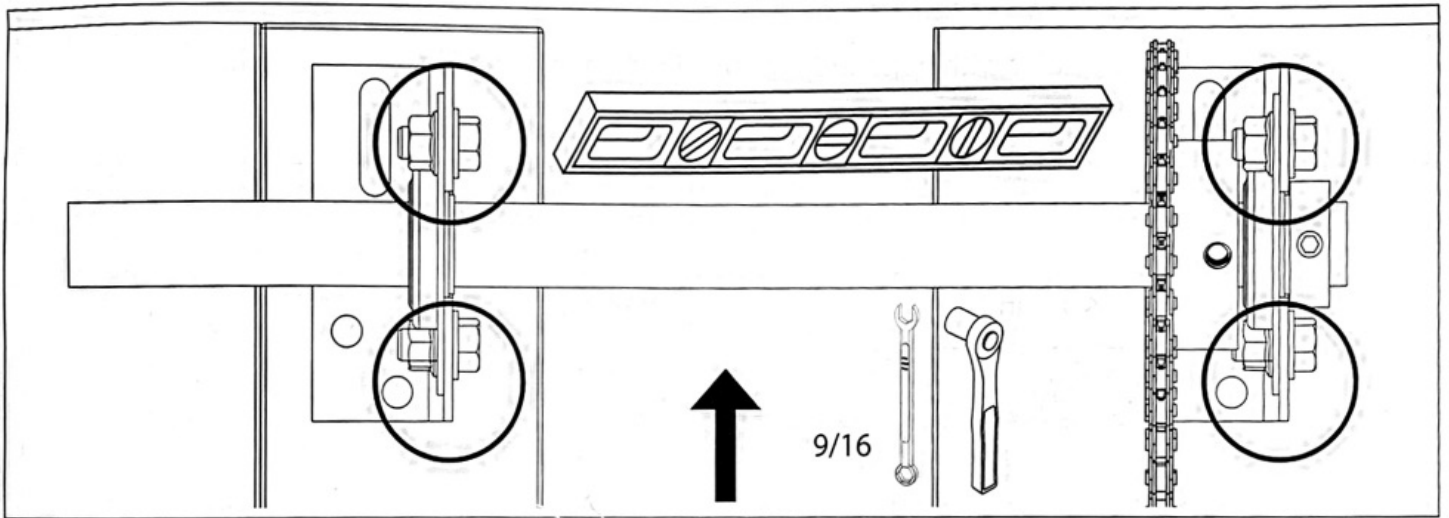
8. Slide 28T sprocket onto drive shaft and slide into bearings.
9. Position 28T sprocket against the inside bearing and position shaft 4-1/4 in. outside of outside bearing.
10. Tighten 28T sprocket set screws.



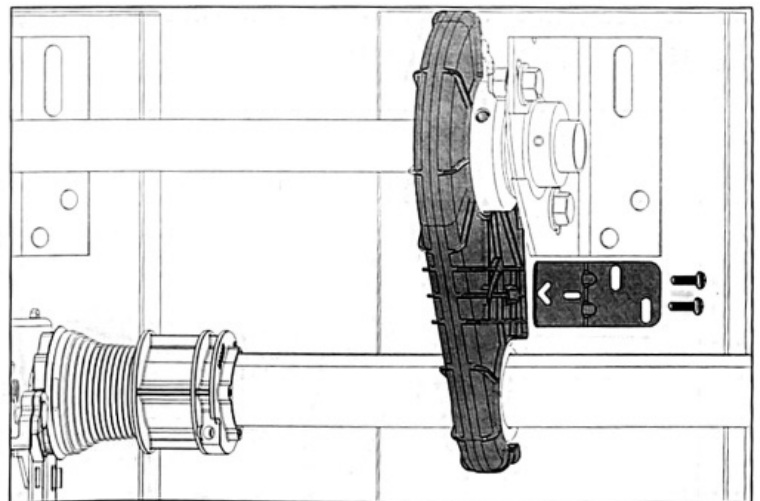
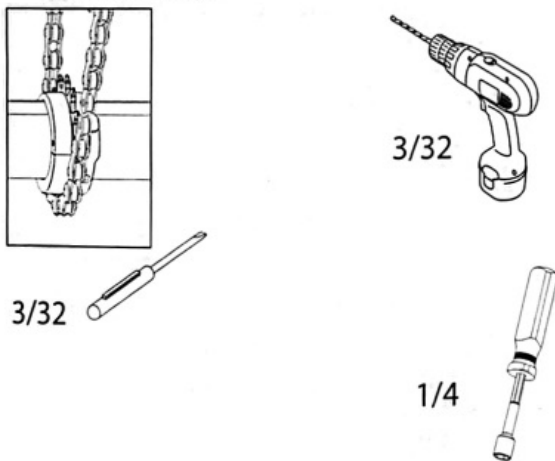
11. Install 2-piece drive sprocket onto TorqueMaster® shaft and assemble using a 7/64 in. allen wrench.



12. Ensure 28T sprocket is seated against inside bearing.
13. Install Set Collar against bearing.
14. Install chain onto sprockets using included master link.



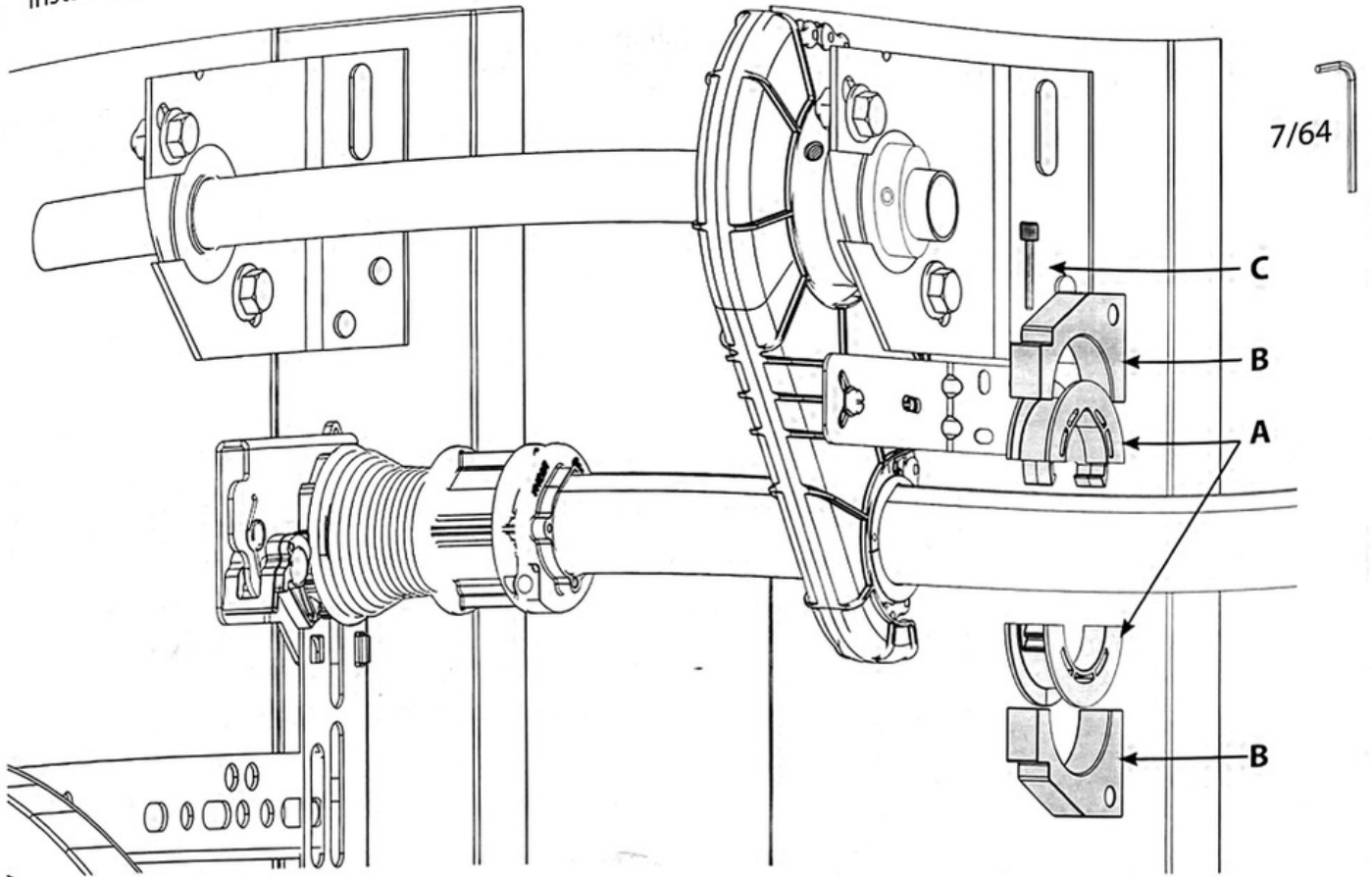
15. Align sprockets and push up on drive shaft to tighten chain, ensure shaft is level and tighten bearing bolts and nuts.
16. Check alignment of chain and sprockets and tighten 2-piece sprocket set screws (3/32 Common Screwdriver).



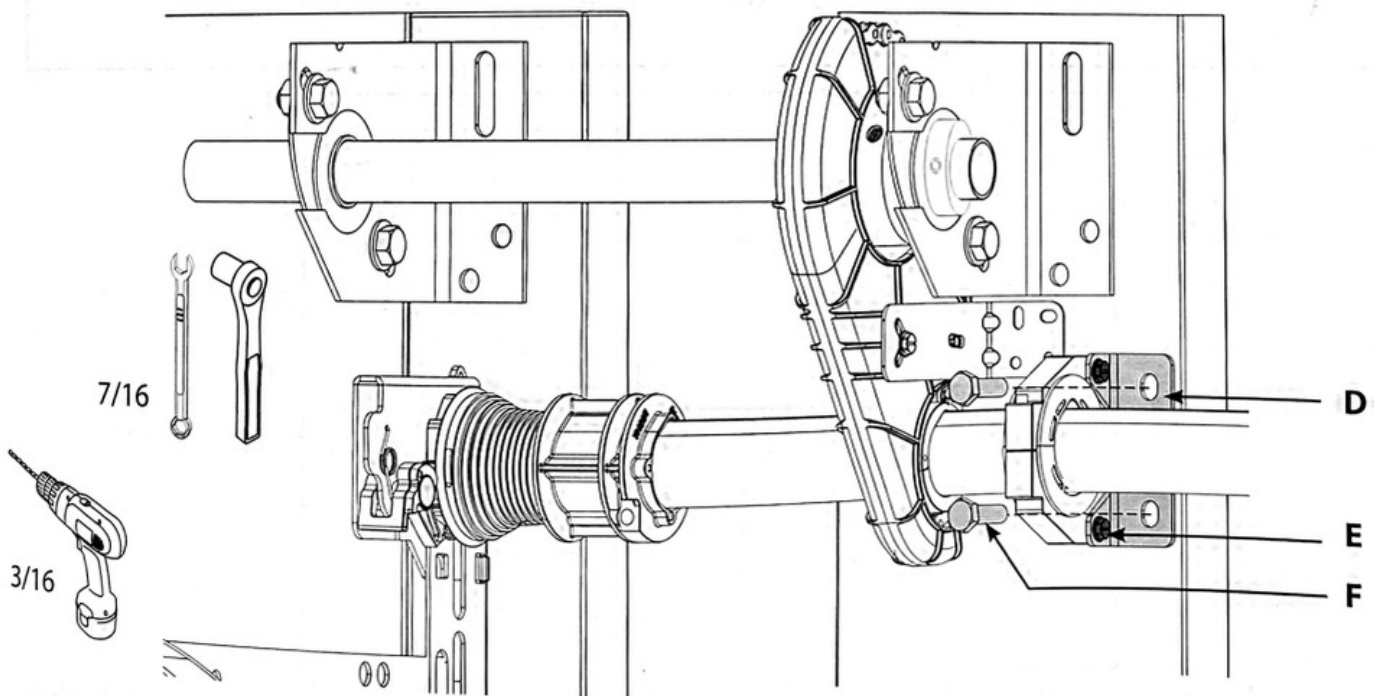
17. Install supplied bracket screws into cover.
18. Align cover and bracket assembly over chain. Mark, pre drill and install bracket to wall with supplied lag screws. Adjust cover for clearance and tighten mounting screws.

**Install bushing assembly onto door shaft;**

1. Install bushings (A) over door shaft and snap the two halves together.
2. Install upper and lower bushing housings (B) with supplied cap head screw (C).



3. Install mounting bracket (D) to bushing housings with supplied bolts and flange nuts (E).
4. Install mounting bracket to wall using lag screws (F) provided.

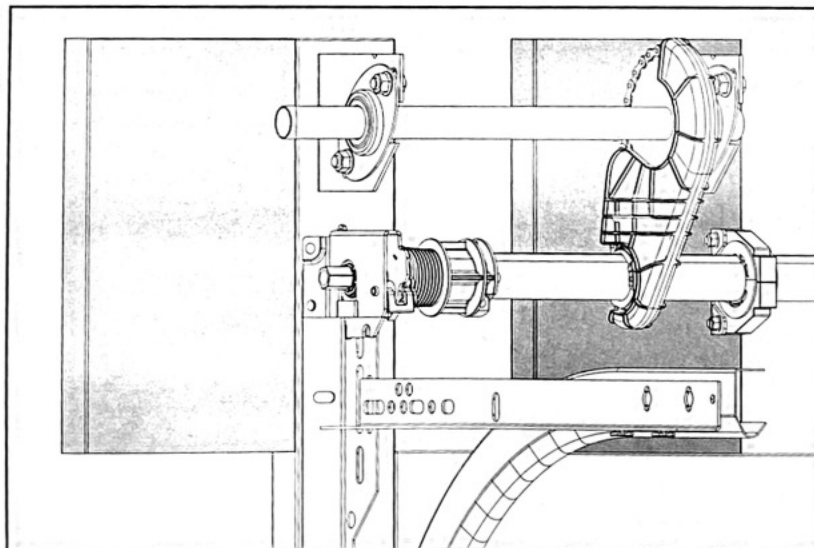
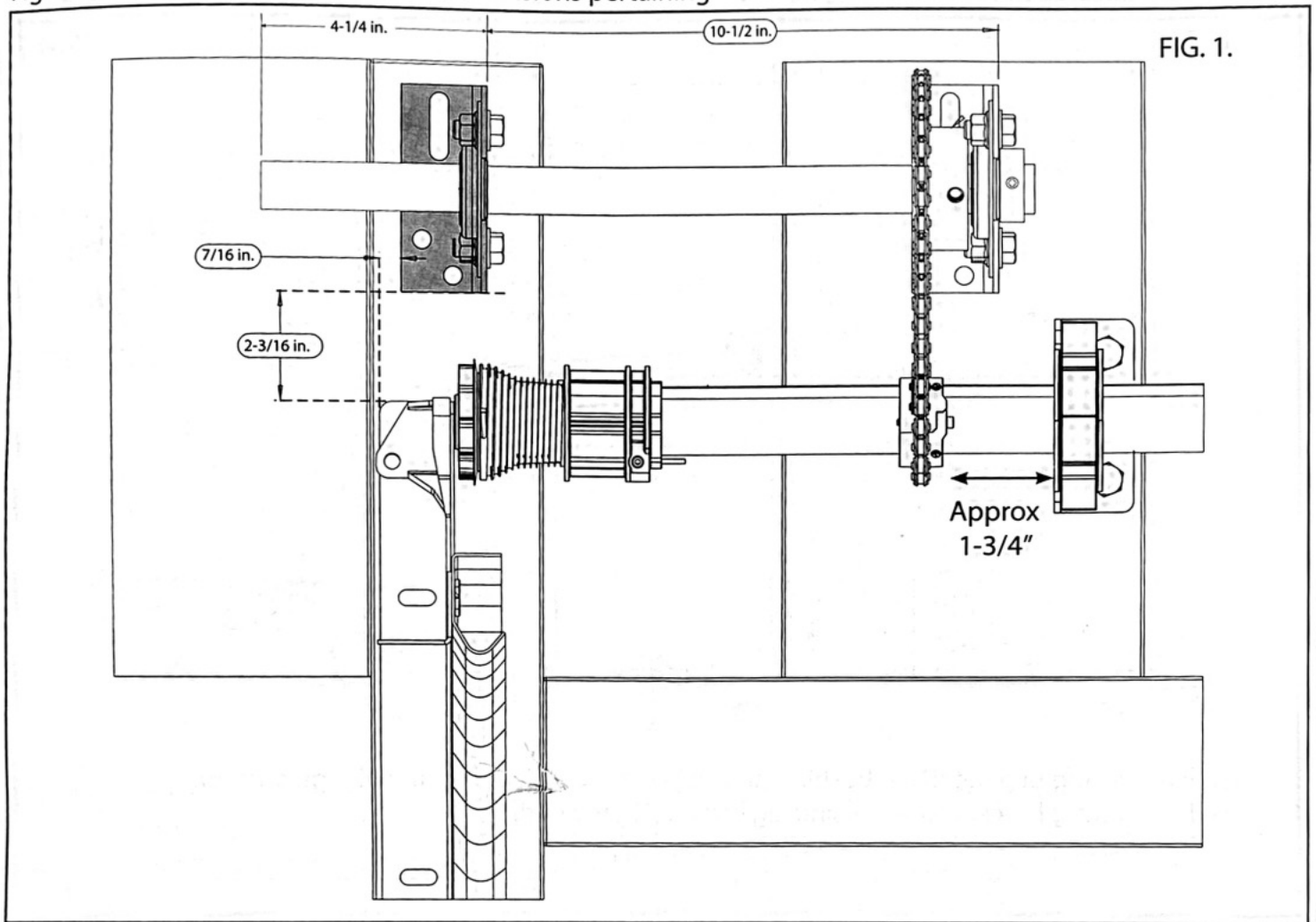


5. Install opener onto drive shaft per openers installation manual instructions.

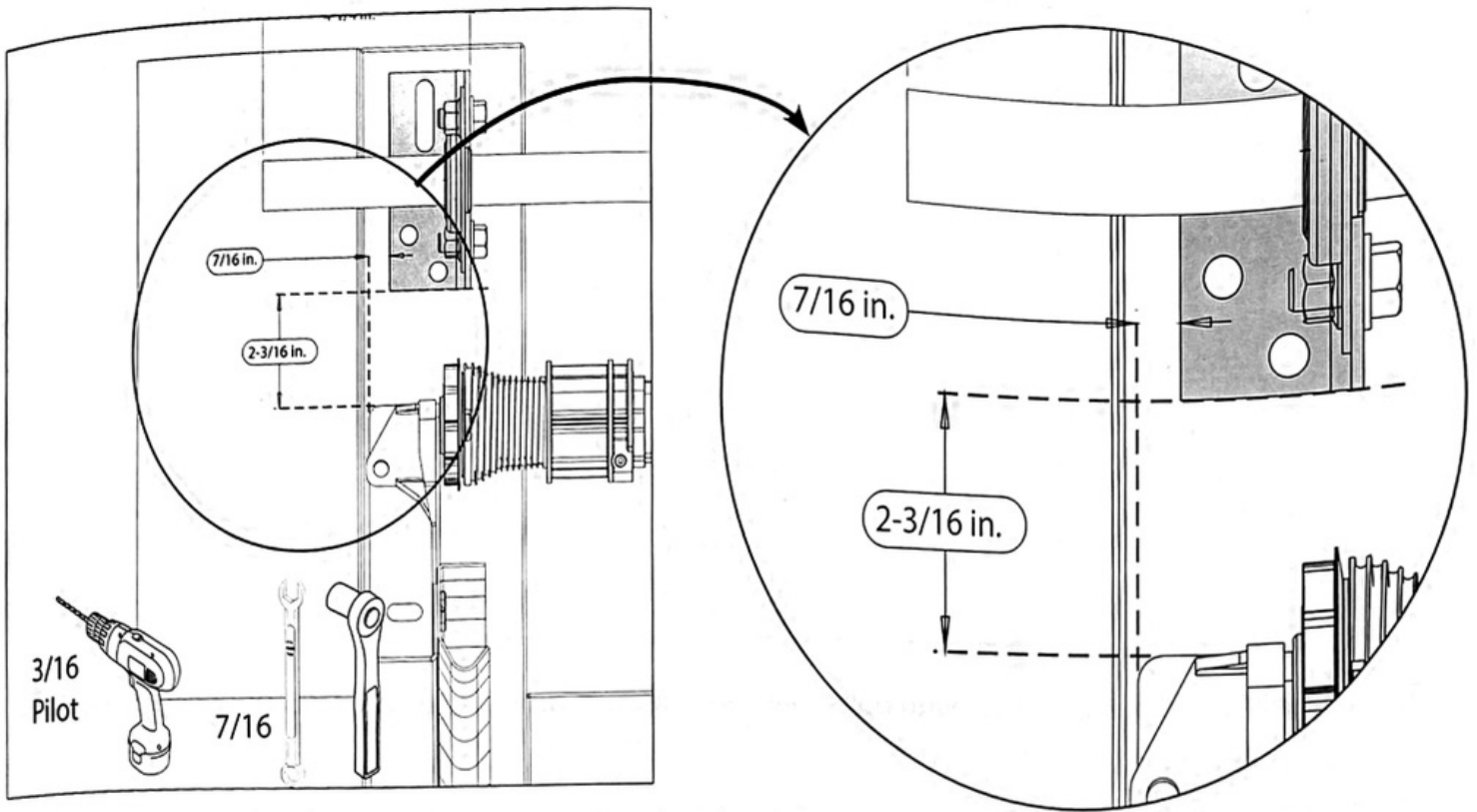
# TORQUEMASTER® INSTALLATION KIT INSTRUCTIONS.

## LEFT HAND SINGLE SPRING MOUNT

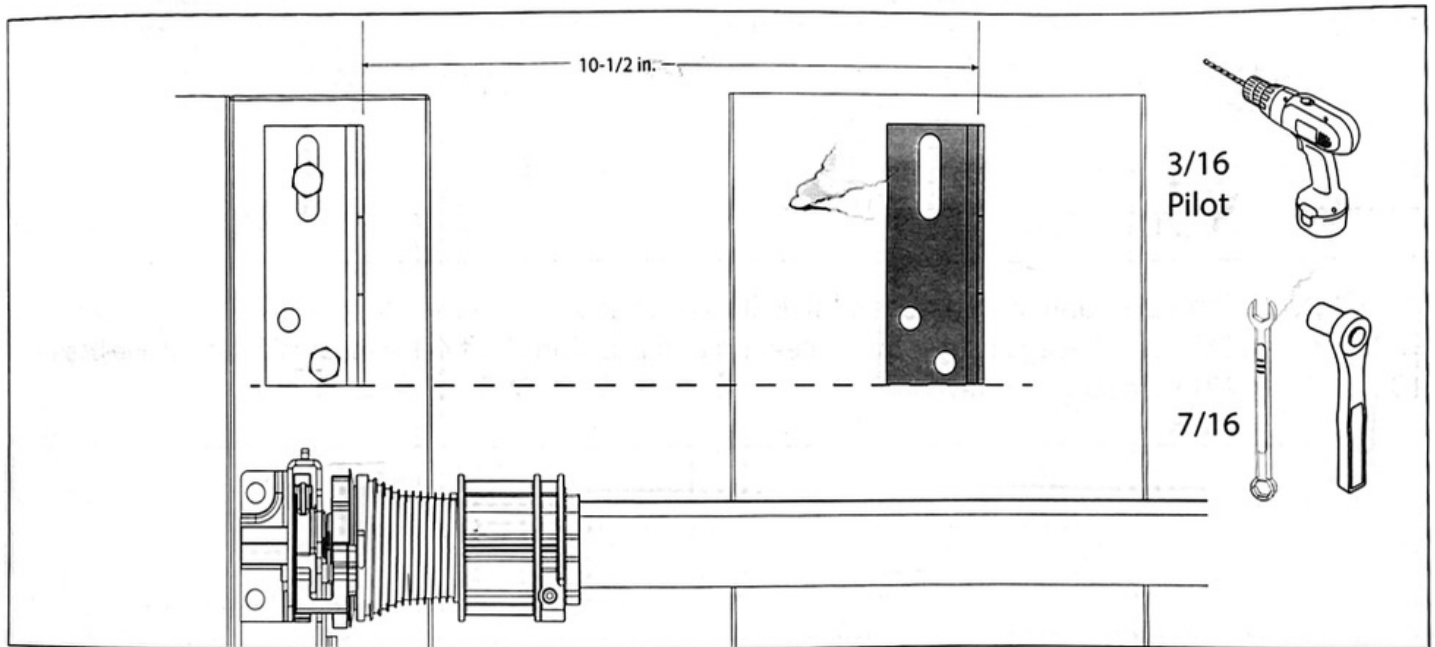
Figure 1 shows all major and critical dimensions pertaining to this installation.



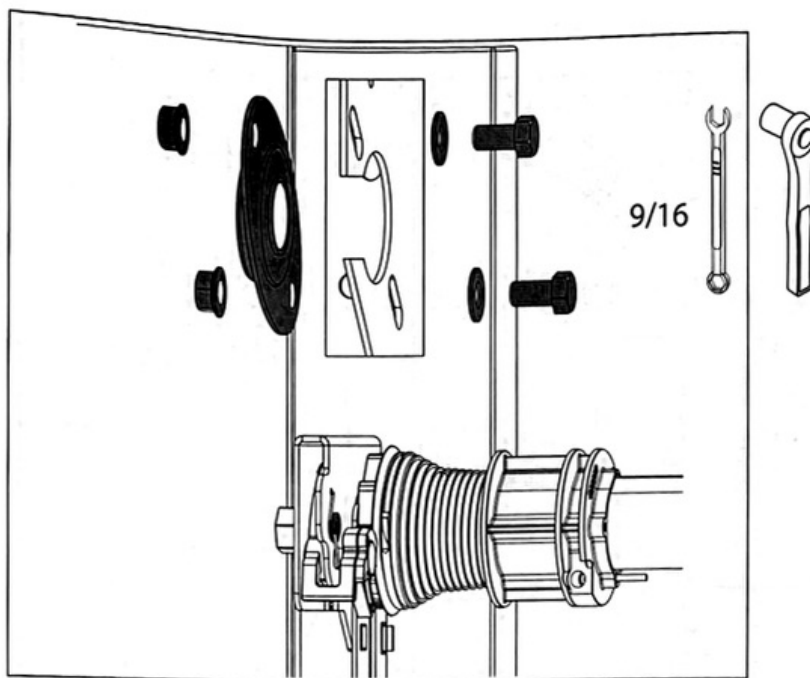
1. Prepare the mounting surfaces for mounting this kit and the opener. Solid mounting material or garage framing that is flush with the door track mounting surface should be used.



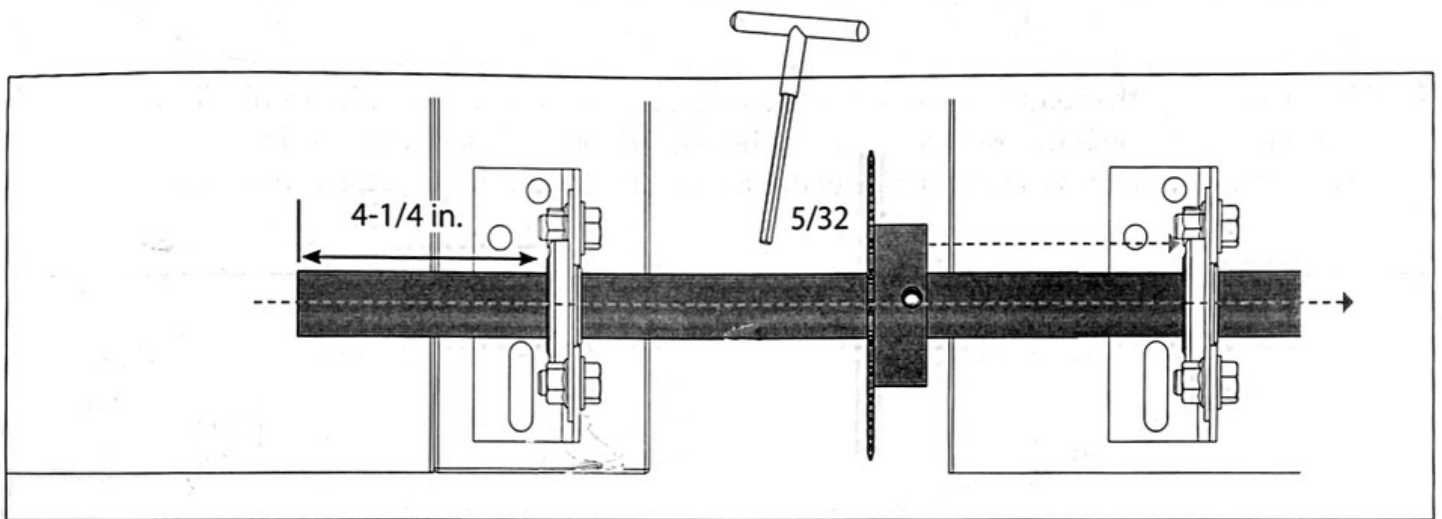
2. Measure up from the TorqueMaster® mounting bracket 2-3/16 in. and mark a horizontal line.
3. Measure in from the TorqueMaster® mounting bracket 7/16 in. and mark a vertical line.
4. Install bracket from this kit to the inside of the intersecting lines with 2 lag screws provided.



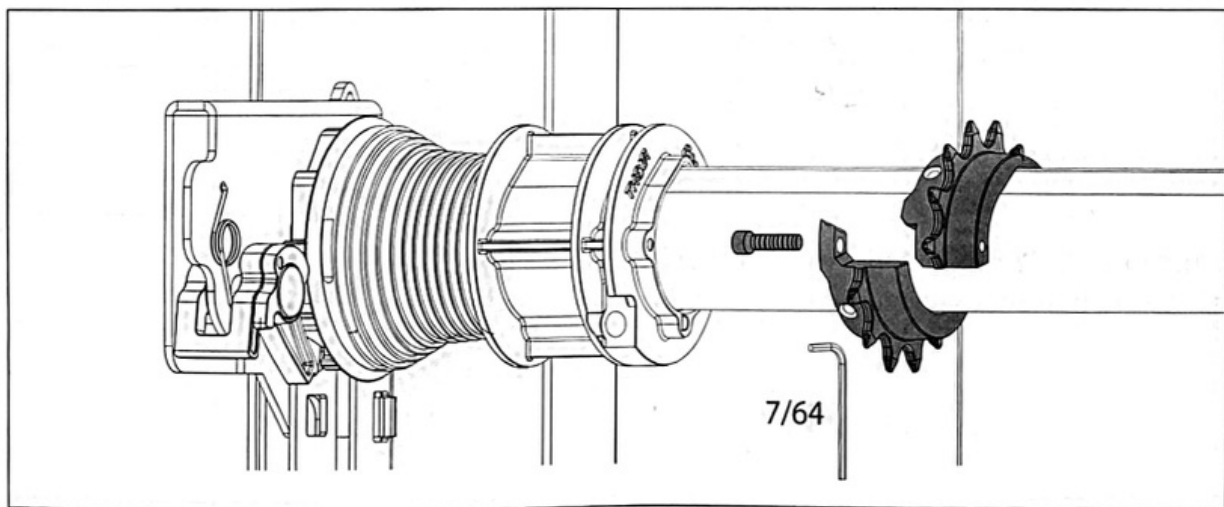
5. Measure in 10-1/2 in. and mark mounting surface for position of inner bracket.
6. Level second bracket to first and install bracket with 2 lag screws provided.



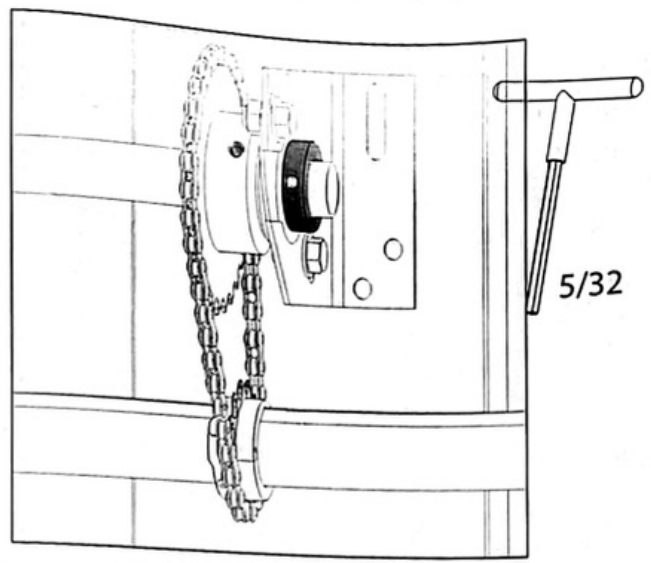
7. Loosely install bearing plates with bolts, washers and nuts provided on the left side of each bracket



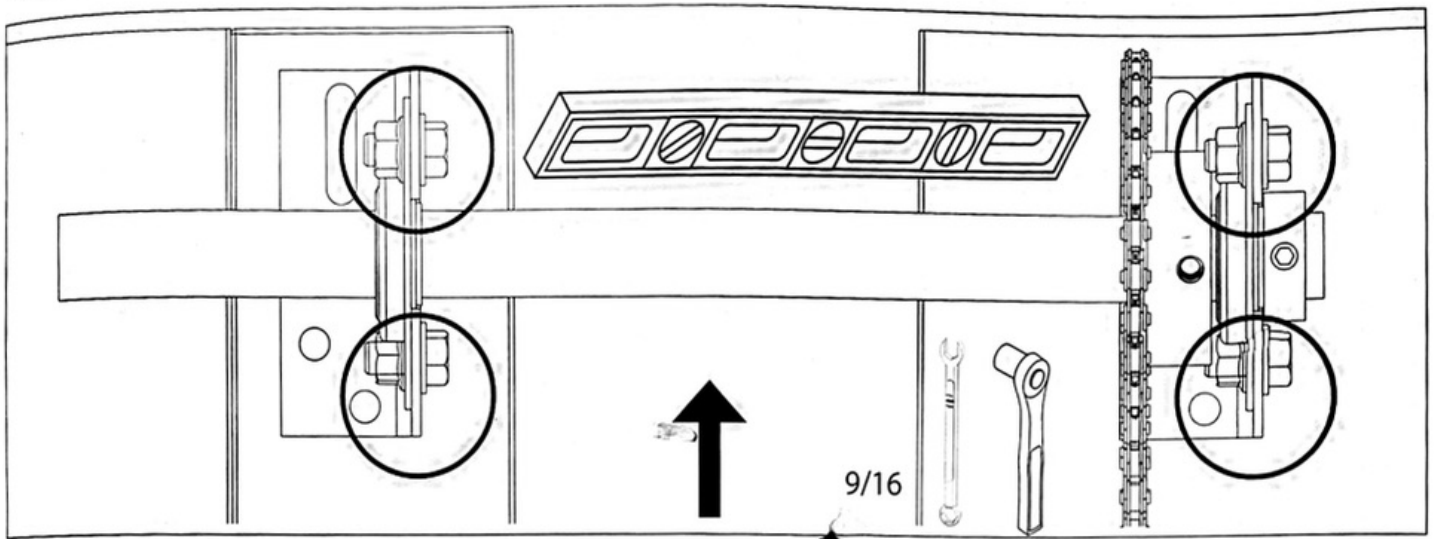
8. Slide 28T sprocket onto drive shaft and slide into bearings.
9. Position 28T sprocket against the inside bearing and position shaft 4-1/4 in. outside of outside bearing.
10. Tighten 28T sprocket set screws.



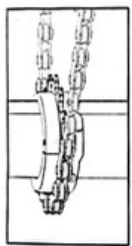
11. Install 2-piece drive sprocket onto TorqueMaster® shaft and assemble using a 7/64 in. allen wrench.



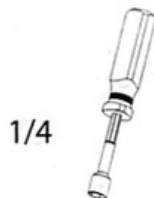
12. Ensure 28T sprocket is seated against inside bearing.
13. Install Set Collar against bearing.
14. Install chain onto sprockets using included master link.



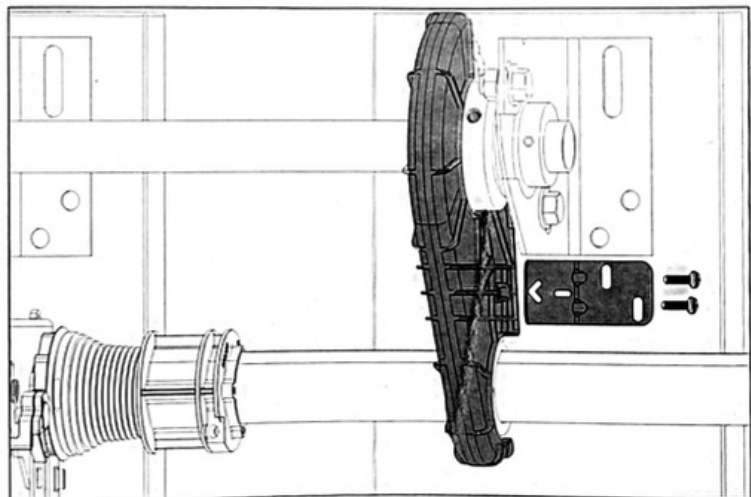
15. Align sprockets and push up on drive shaft to tighten chain, ensure shaft is level and tighten bearing bolts and nuts.
16. Check alignment of chain and sprockets and tighten 2-piece sprocket set screws (3/32 common screwdriver).



3/32



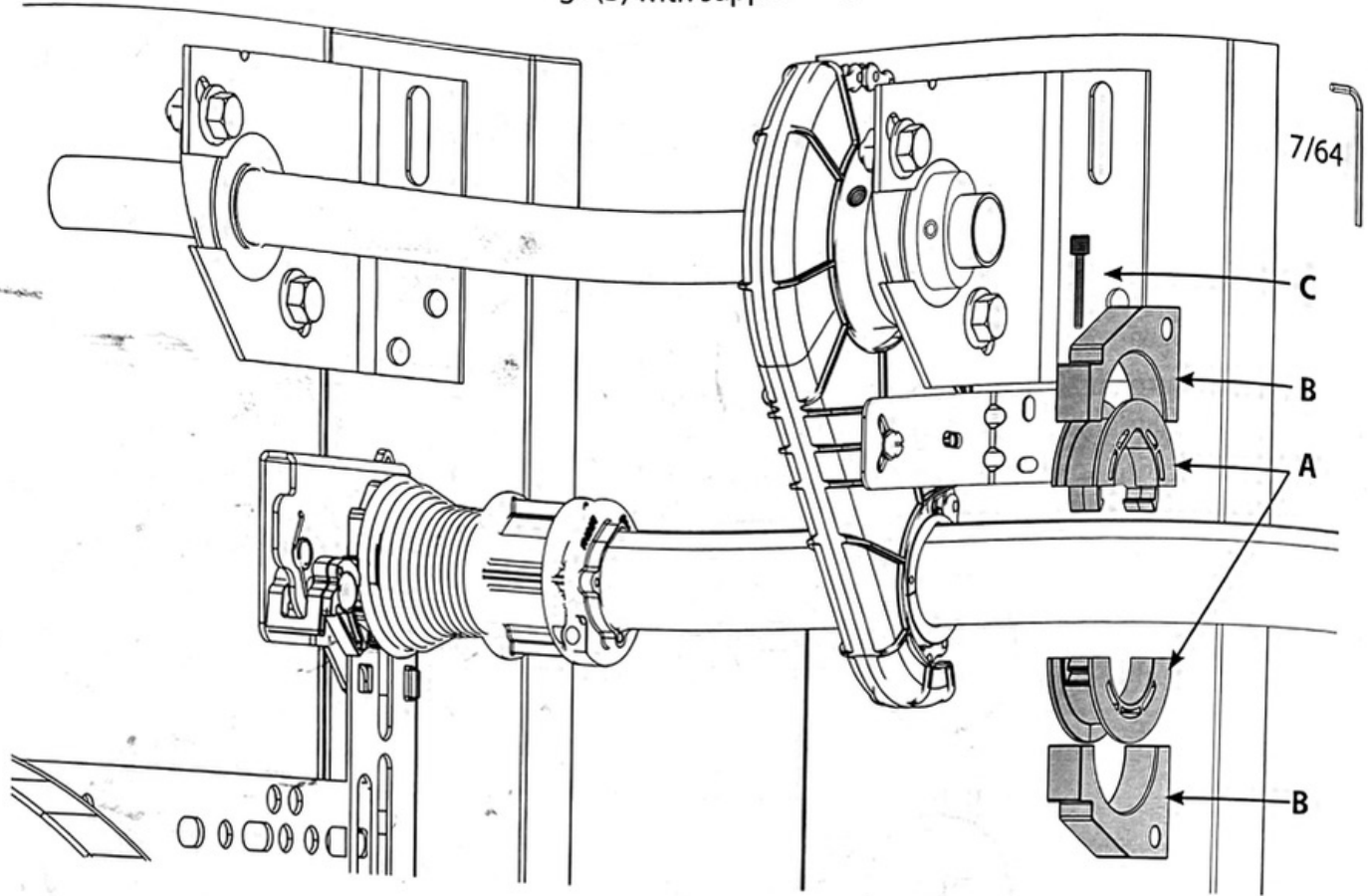
1/4



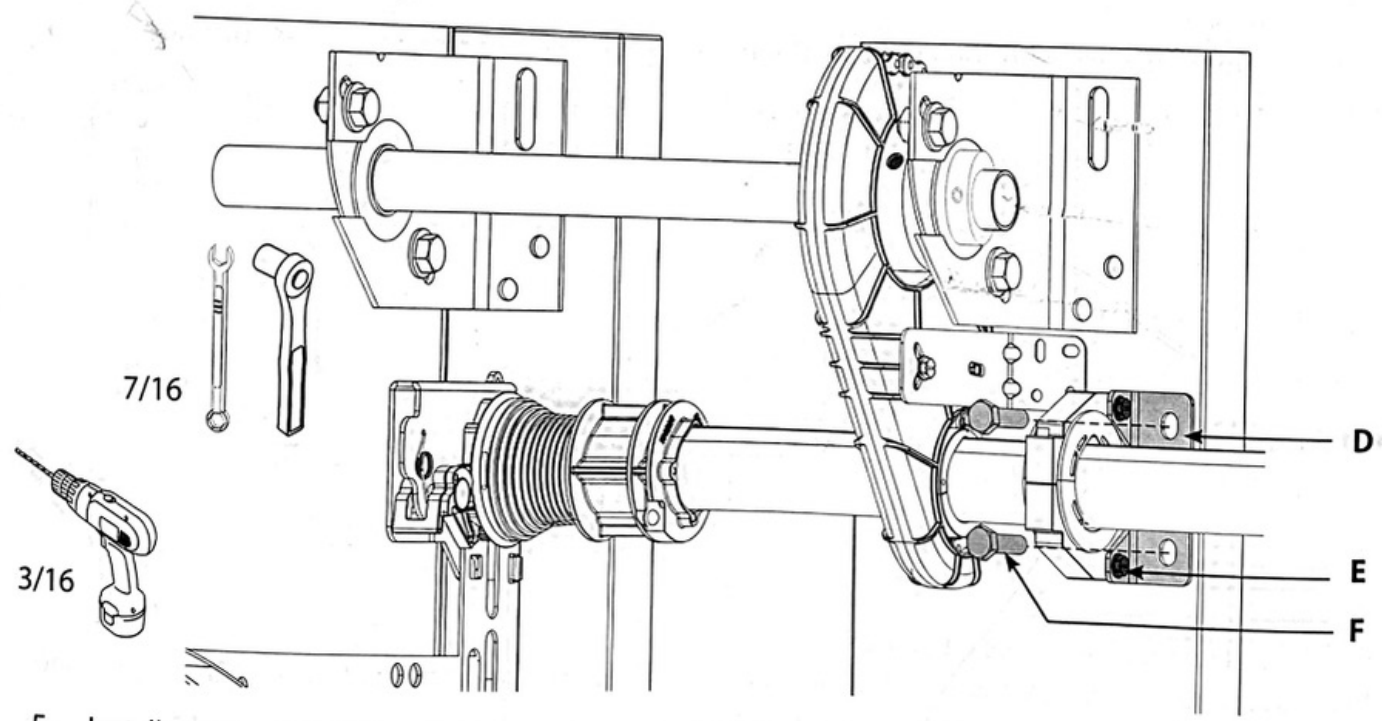
17. Install supplied bracket screws into cover.
18. Align cover and bracket assembly over chain. Mark, pre drill and install bracket to wall with supplied lag screws. Adjust cover for clearance and tighten mounting screws.

**Install bushing assembly onto door shaft;**

1. Install bushings (A) over door shaft and snap the two halves together.
2. Install upper and lower bushing housings (B) with supplied cap head screw (C).



3. Install mounting bracket (D) to bushing housings with supplied bolts and flange nuts (E).
4. Install mounting bracket to wall using lag screws (F) provided.



5. Install opener onto drive shaft per openers installation manual instructions.