



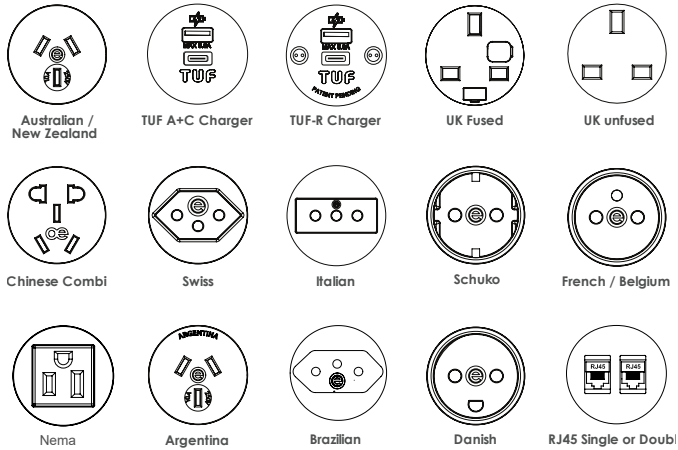
PLUTO satisfies a demand for power and data connectivity, in informal spaces, in a way that no other module has done before. Perfectly suited to breakout areas, smaller meeting rooms, public spaces and anywhere power is needed.

With 3 outlet positions, PLUTO is perfect for a small team to power/charge their devices using conventional mains plugs. PLUTO is available in white, black and 8 vibrant gloss colours. PLUTO is also customisable with prints or logos to order.

PLUTO can be securely clamped to a standard 80mm desk grommet hole, screwed to any suitable surface, or supplied with side entry power cord and rubber feet for free standing use. PLUTO makes sharing power a pleasure.



## Modular components for Pluto



### Soft Wiring (power)

Power wired to Wieland GST connector allows starter cables to be changed to suit requirements, especially useful during moves and changes (CHURN).

PLUTO with Wieland GST entry are rated to 20Amp

### Testing:

100% testing - continuity, polarity, insulation & earth

### Insulation:

Reinforced insulation

## Features



### Configuration:

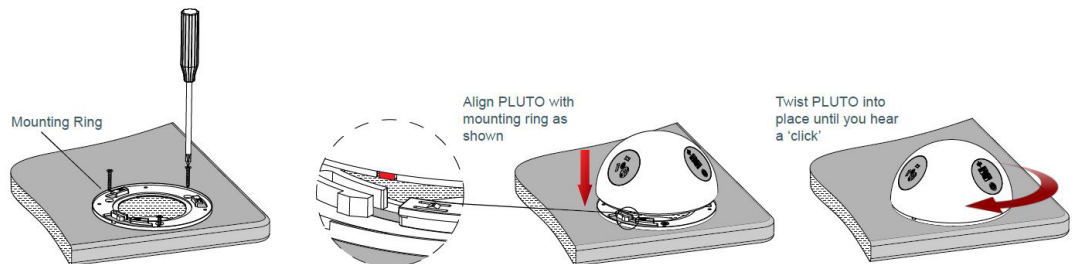
Power only / Data only / Combined (Power & Data/AV) including TUF A+C fast charging. Pluto also fits the TUF-R replaceable charging socket for upgrading or replacing if damaged. Internal segregation between Power and Data/AV in combined PLUTOs

### Colours:

Pluto is available in black, white or a wide range of gloss colours. Pluto is also customisable with matt finishes or coloured patterns on request.

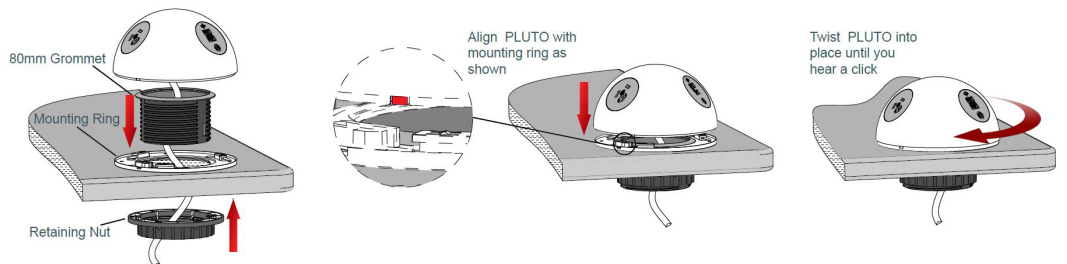
### Pluto mounting adaptor ring with screw fixing

Place mounting ring over 50 to 80mm hole. Screw mounting ring in place.



### Pluto mounting adaptor ring with grommet fixing

Place mounting ring over 80mm hole. Place 80mm grommet into mounting ring and screw up retaining nut until firmly in place.



### Pluto Clamp 60 Kit

PLUTO Clamp 60 comes pre fitted with bolts to ensure a more secure fixing. Place PLUTO over 60mm hole feeding the bolts through. Use the retaining plate and nuts to securely fix the PLUTO in place.

