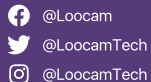




Find us on Social Media



Copyright 2020 © Loocam Technology LLC, California. All rights reserved.
Apple and App Store are trademarks of Apple Inc., registered in the U.S. and other countries.
Google and Google Play are trademarks of Google Inc.



Quick Start Guide

PoE Security Camera System



ATTENTION: Please read carefully and keep this guide in a safe place.

www.loocam.com

V1.0

Contents

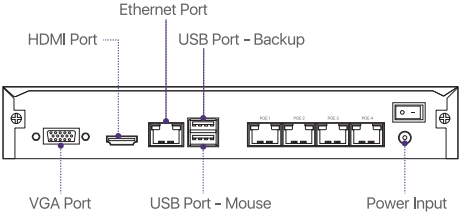
1. What's in the box	01
2. Product Overview	01
3. Installation and Setup	03
Hard Drive Installation	
Security System Connection	
Camera Installation	
Installation Tips	
Add-on Camera	
4. Operating NVR system	07
NVR System Setup	
Video Recording	
Motion Detection	
Human Figure Detection	
Backup via USB flash drive	
System Upgrade via USB flash drive	
5. Setup for Remote Viewing (Smartphone)	11
APP Download	
Add Device	
6. Setup for Remote Viewing (PC)	12
Client Installation	
Add/Manage Device	
Live view and Control	
7. Warranty and Support	13

1.What's in the box

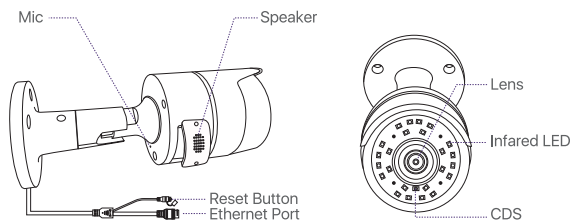


2. Product Overview

NVR Back Panel



IP Camera



Safety Precautions

- Use the camera only with compatible LOOCAM NVRs.
- Read this guide carefully and keep it for future reference.
- Follow all instructions for safe use of the product and handle with care.
- Use the camera within given temperature, humidity and voltage levels noted in the camera's specifications.
- Do not disassemble the camera.
- Do not point the camera directly towards the sun or a source of intense light.
- Use only a regulated power supply with the product (optional). Use of a non-regulated, non-conforming power supply can damage the product and void the warranty.
- Periodic cleaning may be required. Use a damp cloth only. Do not use any harsh, chemical-based cleaners.
- The supplied cable is rated for surface mounting only. Cables for in-wall and floor-to-floor installations are sold separately. These and other cables are available at www.loocam.com

 Do not open the case while power is on.

3. Installation and Setup

Hard Drive Installation

The NVR may not include HDD (Hard Disk Drive) depending on the kit you selected. This NVR works with most 3.5" SATA HDD (supports up to 8TB).

Note: Please skip this step if HDD is pre-installed in your NVR.



(1) Unplug your NVR from power, unscrew and remove the top cover.

(2) Connect the SATA power and data cables from the NVR to the corresponding ports on your HDD (as shown).

(3) Place the Hard Disk into the DVR. Arrange the wires neatly.

(4) Hold the HDD and the NVR steadily, gently turn it over and line up the holes on the HDD with the holes on bottom of the NVR. Using a suitable screwdriver, screw the provided screws into the holes. Assemble back the cover.

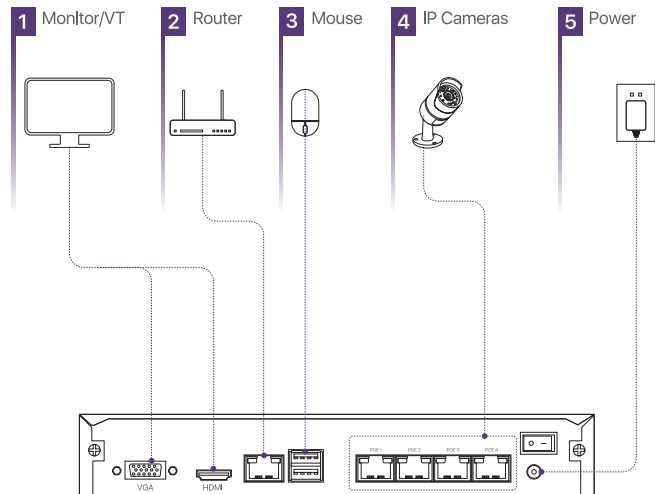
Note: After installing a Hard Disk, you need to first format the Hard Disk before recording. Right click the mouse > go to Main Menu > Disk Management > Select the Hard Disk > Click Format > Apply.

 Surveillance-certificated hard drive is recommended.

Security System Connection

To ensure that the product works properly and not damaged while in transit, we recommend you to test the whole system before installation.

- (1) Connect the monitor to the NVR using HDMI or VGA.
- (2) Use a network cable to connect the NVR to the router.
- (3) Insert the USB mouse into the USB port on the rear panel of the NVR
- (4) Connect the cameras using Ethernet cables provided.
- (5) Connect the power adapter (DC 48V/2A) to the NVR power input.



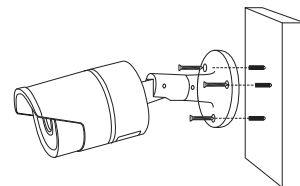
Camera Installation

- (1) Use the included Mounting Hole Sticker to mark holes for the screws.

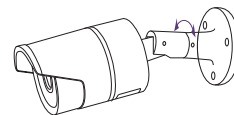
Drill holes for the mounting screws.

Note: Insert the included drywall anchors if you are installing the camera on the wall.

- (2) Connect cables as shown in the section "Security System Connection"
- (3) Feed the cable through the mounting surface or cable notch and mount the camera stand to the surface using the provided screws.
- (4) Use a spanner (included) to loosen the adjustment screw.



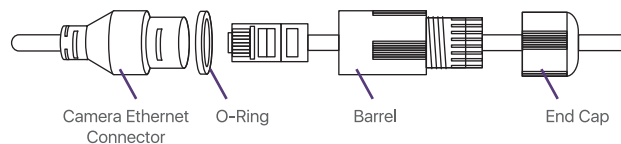
- (5) Adjust the camera position accordingly.
- (6) Tighten the adjustment screw to secure the position.



ATTENTION:

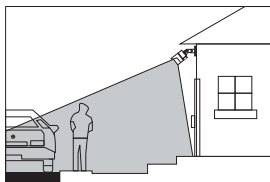
This camera includes an Auto Mechanical IR Cut Filter. When the camera changes between Day/Night viewing modes, an audible clicking noise may be heard from the camera. This clicking is normal, and indicates that the camera filter is working.

Using the Weather Resistant Cap



Installation Tips

- Refer to the image below for the ideal position. It is recommended to place the camera at least 7 ft. above the ground and tilting it towards the area of surveillance for best visual coverage.
- Ensure that the camera has clear line of sight.
- Place the camera at no more than 20 ft. away from the area you want to monitor.
- Install outdoor without worry. Cameras have strong weather resistance casing (IP66 full protection grade).



Add-on Camera

POE NVR will automatically add IPC to NVR by default. Simply plug and play. It is recommended to test the system with the cameras before installation. If it does not work, please contact Loocam customer service.

In the event of adding new add-on cameras after resetting, please follow the steps below:

- (1) Right-click the mouse connected to the NVR, and the operation menu will pop up.
- (2) Click on the <IPC channel config> to enter the IPC channel configuration interface.



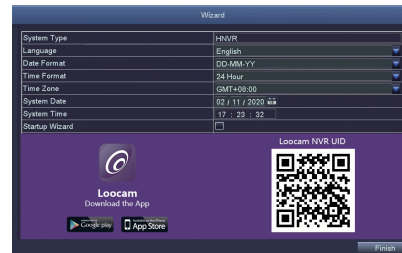
- (3) Click on the search button on the IPC channel configuration page to search for the corresponding IPC;
 - (4) Next, select the IPC you wanted to add from the search result and add.
- Upon successful connection, the connected IPC will appear at the bottom of the page. Now you can see live feed from the newly added channel of the camera.

4. Operating NVR system

NVR System Setup

After connecting the system, power on the NVR and a Wizard page setting will appear.

On the Wizard page setting, you can edit device name, select Language, Date Format, Time Format, Time Zone, System Date and System Time.



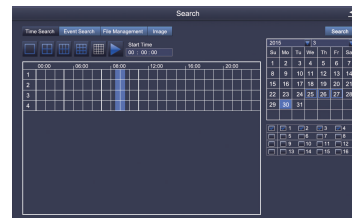
Password Setting:

From the NVR live viewing screen, right-click and tap Main Menu > Setup > Users. Select the account you want to set password and click <Change Password>. Default password (Empty). When setting the password, please enter at least 6 characters or more. Note: You can write down the password in case you forget.



Password: _____

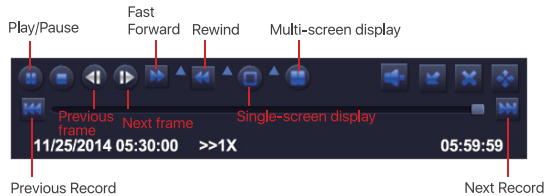
Video Recording

From the NVR live viewing screen, right-click and tap Main Menu > Search, system will display as shown:



Search the video you want via Time or Event, then click on play button.

-  Select the channel
-  Start playing



Previous Record:

Move to last recorded event

Next Record:

Move to next recorded event

Fast Forward:

Video can be played at different speed, from 1/4x to 16x speed.

Rewind:

Video play can be rewind at 1x, 8x, 16x and 32x speed.

Screen Display Mode:

Both single-screen and multi-screen are available. You can choose how many channels you want to playback one time. Channel without records displays blank screen.


Motion Detection

After setting motion detection, the NVR will only record when it detects movement or activity.

Right-click > Main Menu> Setup > Alarm > Motion.

Select the camera you want to setup motion detection by ticking the box under 'Enable'



Note: An icon  will be shown when motion is detected by the camera and the system will start recording.

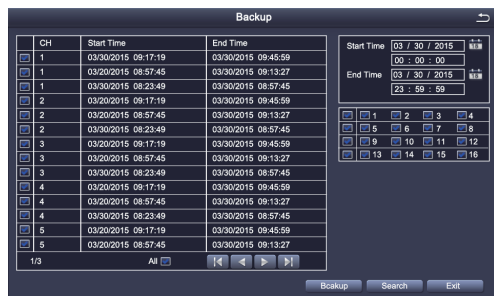
Human Figure Detection

This NVR supports human figure detection. When human figure is detected, it will trigger alarm/recording. Combining motion detection and human figure detection, the false alarm rate will decrease.



Backup via USB flash drive

Insert the USB flash drive. Right click > Main Menu> Backup > select channel and time > Search >select the video clips > Backup > select storage media > Start.



System Upgrade via USB flash drive

You can contact our official customer service or download the latest program directly from the official website. Copy the firmware file to the root of USB flash drive. Then proceed as follows:

First plug in the USB flash drive, and then unplug the NVR power supply. Plug in the power plug, you will see an "upgrading" upgrade interface on the monitor. Please wait for a while. After the upgrade is completed, unplug the USB flash drive and the upgrade has completed.

Note: After the upgrade is completed, please do not restart the power supply when the U disk is still plug in, otherwise the system will perform the upgrade again.

5. Setup for Remote Viewing (Smartphone)

APP Download

Scan the QR Code or search Loocam in AppStore or Google Play to download the free app.



Loocam



iOS

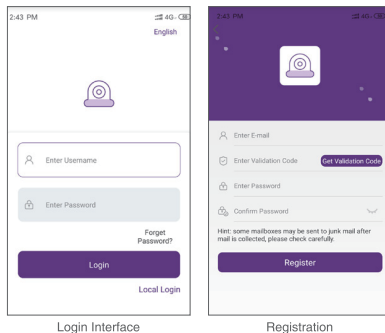


android



This camera system can also work without internet connectivity, but it is more suitable for realizing remote-control via internet

After downloading,
register and create account.



Note: You can write down your account information below,
in case you forgot.(Registered email or phone number,user account name,
password or a security question) _____

Add Device

- (1) Go to LooCam App in your phone, tap the icon [+] in the top right corner to add device.
- (2) Select your device type of NVR.
- (3) Scan the UID QR code on the NVR cover. This UID QR code also can be found on the NVR startup screen or in the NVR main menu (Information-System-Device ID).
- (4) Follow the instructions to add your device and watch the live streaming video.

Note: Two-way voice via LooCam App for cameras with built-in mic and speaker.

6. Setup for Remote Viewing (PC)

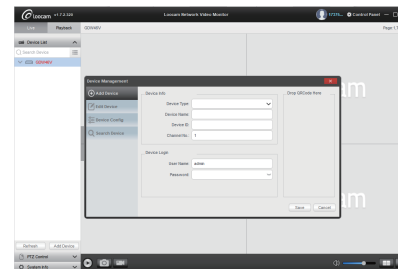
Client Installation

Download Mac or Windows client (AVSS) from LooCam official website www.loocam.com.

Note: If you have registered an account through LooCam APP, simply login using the same account for AVSS.

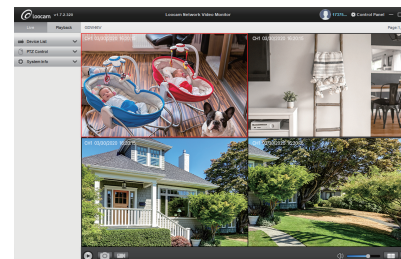
Add/Manage Device

Click under Device List to add device, edit device or configure device.



Live View and Control

Once you have successfully added device, click on the device name of the device you want to view under Device List, select the channels to start viewing.



- Play
- Screenshot
- Record
- Channel View
- Full Screen

7. Warranty and Support

LooCam Technology LLC provides a one-year limited warranty from the date of purchase. Please keep your dated purchase receipt which is required for limited warranty requests. For more details on warranty, please visit www.loocam.com.

If you have any questions in regards to your new LooCam security product, please email us loocare@loocam.com.