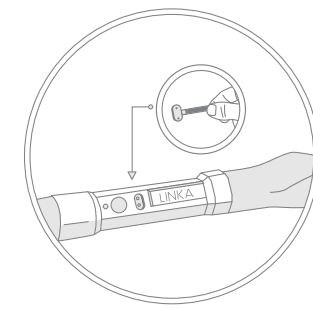


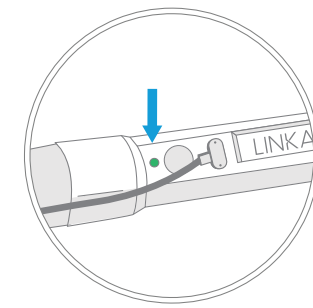


WELCOME TO  
YOUR SMART LOCK

### FOR THE BEST EXPERIENCE, FULLY CHARGE YOUR LASSO BEFORE FIRST USE.



1. Connect the supplied cable to the pogo port on the top face of your smart chain lock to charge



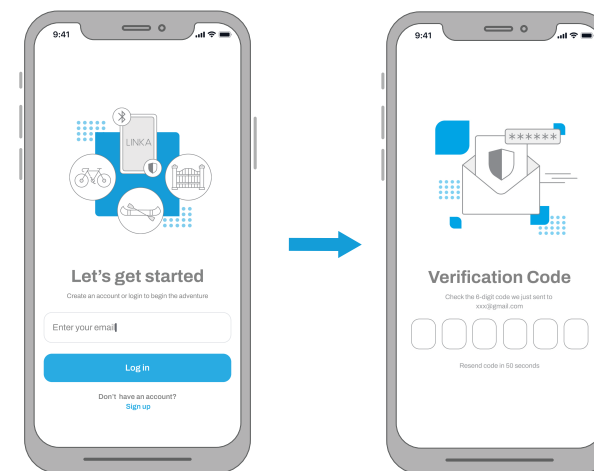
2. When the LED indicator turns solid green, your LASSO is fully charged.

#### NOTE:

The device will not charge beyond temperature range of 32°F to 112°F (0° to 45°C)

### SETTING UP YOUR LINKA APP

1. Download the LINKA App from the App Store® or Google Play.
2. Create your LINKA account using your email. Be sure to use one-time password that will be emailed to you.



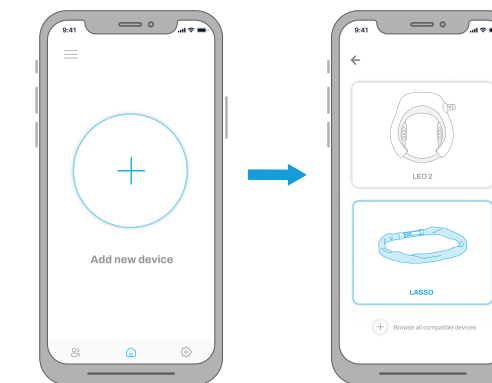
### CONNECTING LASSO

1. Switch on Bluetooth on your smartphone.

**Apple iOS**  
Settings > Bluetooth. Slide to "On"

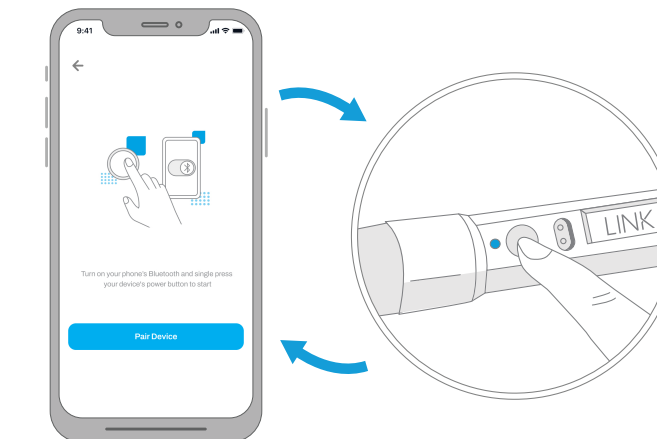
**Android**  
Settings > Wireless & Networks > Bluetooth settings. Check the box next to Bluetooth

2. Tap on "+" symbol in the app and select the Lasso Device.

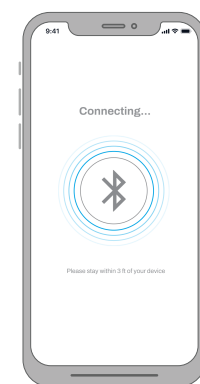


3. With the LINKA App open, place your smart phone next to your LASSO smart chain lock.

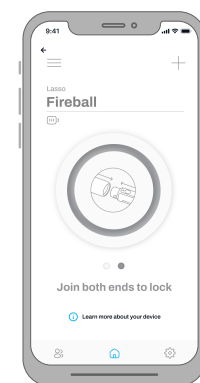
4. Press the power button to switch on your lock. When you hear a startup tone and your LINKA LED indicator is blinking blue, the lock is now in discoverable mode



5. Please allow up to 60 seconds for the pairing process to complete.



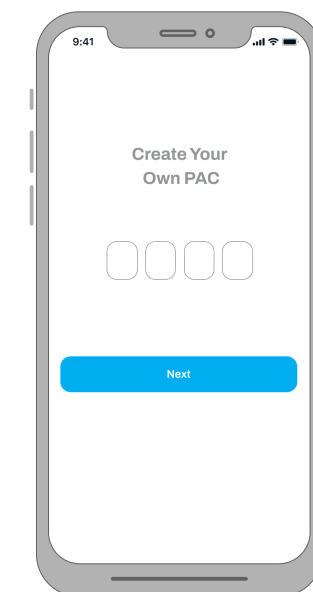
6. CONGRATULATIONS! Your LASSO Smart Lock is ready to use



### IMPORTANT

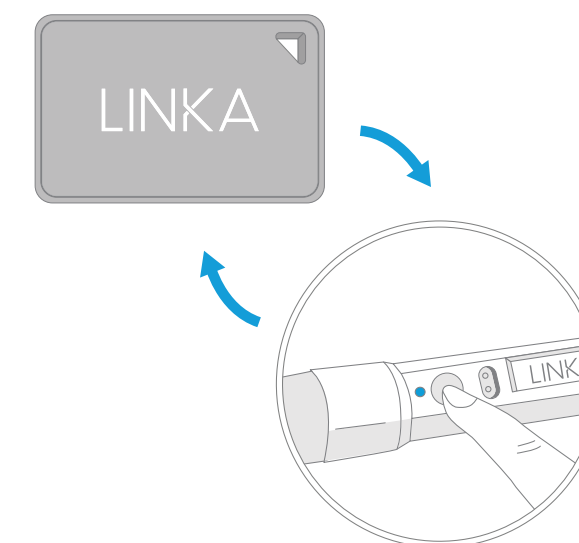
Setting up your Phone-less Access Code (PAC)

Now that your LINKA is connected with your device, we require that you to create an access code that will enable you to unlock LINKA manually when your phone is unavailable.



### USING LASSO

1. To unlock, have your smartphone or smart-key 1- 3 meters from your LASSO lock and hold down on the LASSO power button. You will hear a quick unlock confirmation tone and you can then manually separate each end of the lock.



2. To lock, just place both ends of the lock together and you will hear a lock confirmation tone.

