



**COMPOSTING  
TOILET MANUAL**

# TABLE OF CONTENTS

Intro .....	1
What's in the Box? .....	2
Safety .....	2
Installation .....	3
<i>Fan Power</i> .....	3
<i>Motor Power</i> .....	3
Power.....	4
Venting.....	5
How to Use.....	6
Urination .....	7
Urine Disposal .....	8
Solids Use.....	9
Solids Disposal .....	10
Tech Specs .....	11



**OGO™ Toilet** – SKU: ogov1

## **WHO WE ARE**

The OGO™ Toilet is a waterless composting toilet designed to be the most aesthetic product that fits in the smallest of spaces.

## **WHY WE EXIST**

As the world of RVs, Vans, Schoolies, Tiny Homes, Bunkers and other “off grid” locations grow, so does the need for an efficient and affective waterless toilet. Thus, OGO™ was born!

## **HOW WE'RE BETTER**

While other composting toilets are limited in their capabilities, OGO™ has it all! We're smaller, sleeker, modern, and leave a smaller footprint than the leading composting toilets. We make everyday life easier.



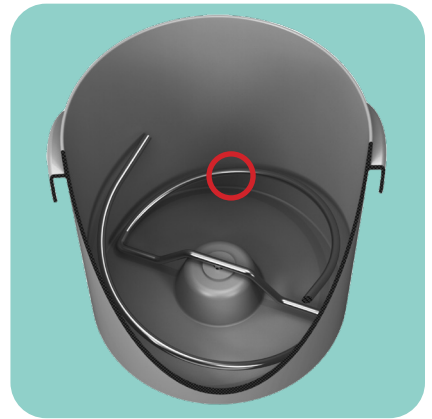
## WHAT'S IN THE BOX?

- The OGO™ Toilet
- Mounting Screws
- Vent Hose - 5' Length
- 12V Power Cable
- Spray Bottle

## SAFETY WARNINGS



This is a **pinch point!**  
Be careful when closing the bowl, fingers could become caught.

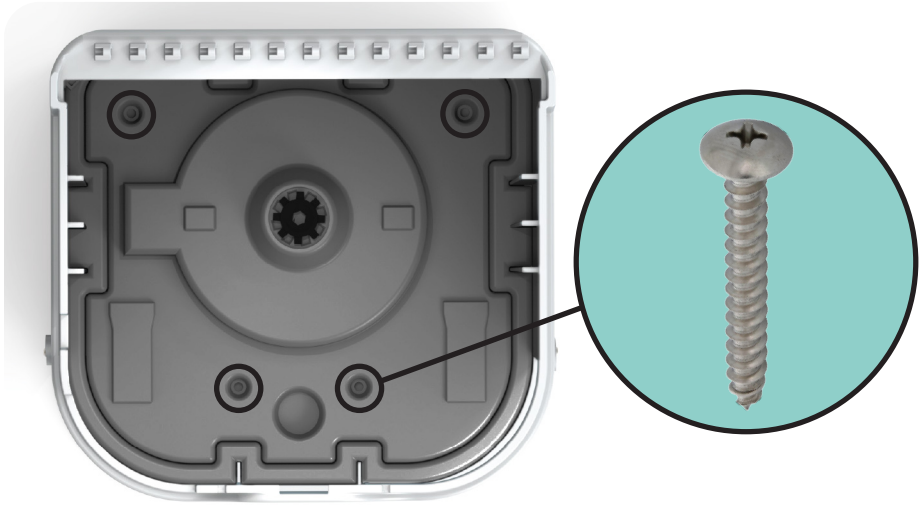


The **agitator bar** spins for 2 minutes while mixing after a solids use.

Avoid reaching into the bin while the bar is spinning.

# INSTALLATION

Place screws into mounting holes and use a screwdriver or drill to tighten the four screws (sheet metal screws) to attach the base of the toilet to the floor.



## Fan Power

- Always on
- 20 mA rating

## Motor Power

- On when mixing
- 5 Amp rating

## Average daily draw

---

*Fan:* **0.48 Ah/day**

*Motor:* **0.6 Ah/day**

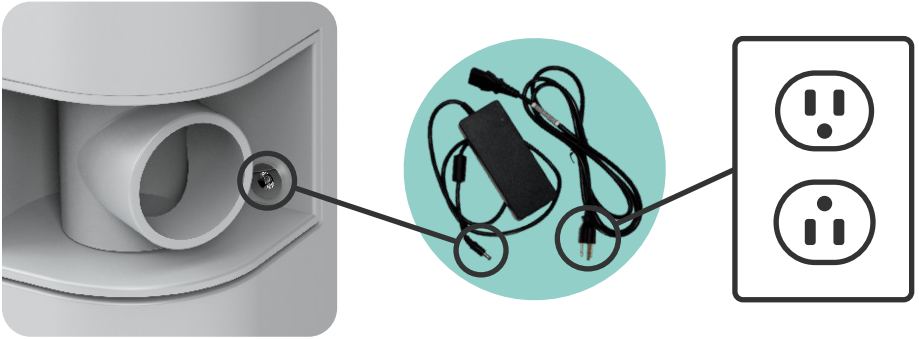
*Assuming: 4-5 uses per day  
1.5-5.5 Amp draw  
2 min. cycle time*

Don't worry about overload! If the moss/coir mixture is too thick, the fuse may pop. Wait about 10 minutes and the fuse will reset.

## POWER

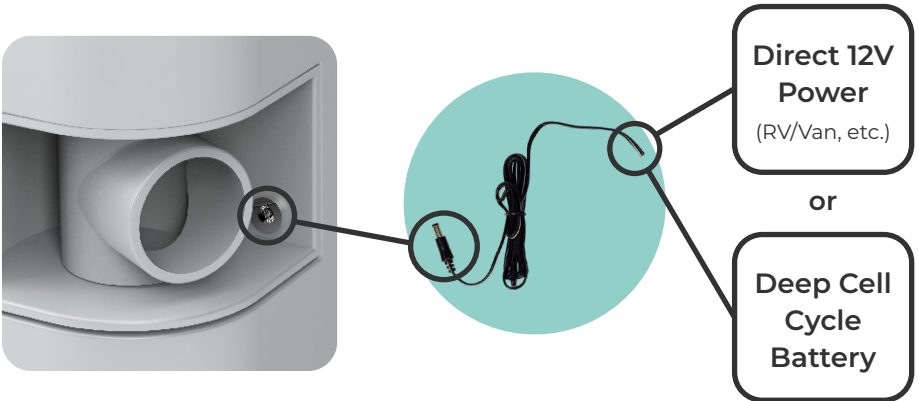
### If you have access to 110V (optional - sold separately)

Plug one end of the adapter into a wall outlet, and the other end into the small power jack (5.5 x 2.5 mm jack) on the back of the toilet.



### If you only have access to 12V (provided in box)

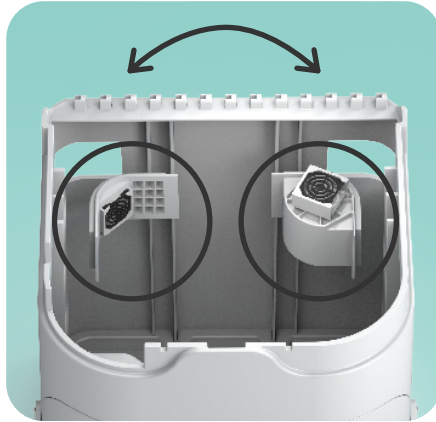
Plug the power end of the cord into the power jack on the back of the toilet and use the open leads to wire directly to your power source. The **red** wire is the positive wire and the **black** wire is the negative.



# VENTING

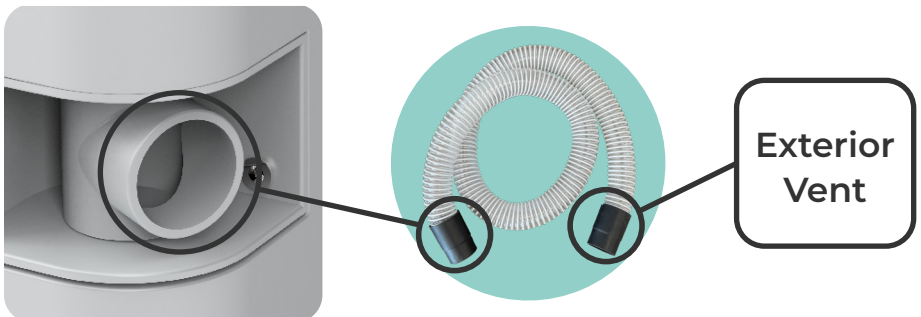
## INSERT SWAPS

The inserts for the venting/power and inlet filter can be swapped depending on which direction your power source/venting capabilities are coming from. Pop out the insert from the inside of the toilet, and pop them back in on the desired side.



## VENT HOSE

Your OGO comes with a **5 foot vent hose** that has black adapters on each end. These hose ends fit a **1-1/4" PVC pipe**. Place one end of the hose on the T-bar that's on the back of the toilet. The other end will attach to your exterior venting capabilities.



# HOW TO USE

## Setting up the Compost Medium

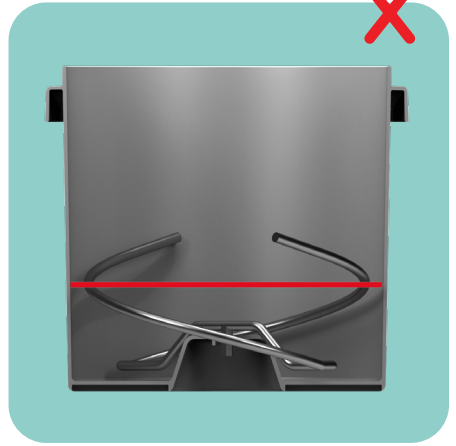
- Coco Coir
- Sphagnum Peat Moss

Fill bin to slightly below the proper fill line with your medium of choice. Add water until it is wet to touch and allow the agitator to fluff the medium until it meets the proper fill line.

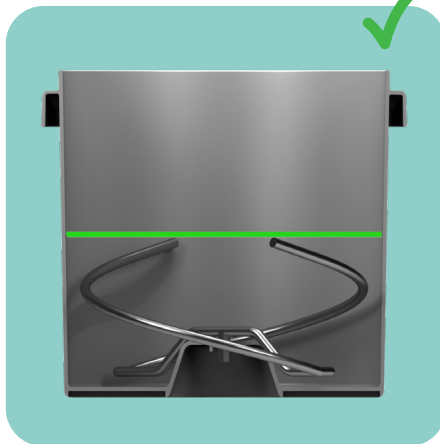
**TOO FULL**



**TOO LOW**



**PROPERLY FILLED**





# URINATION

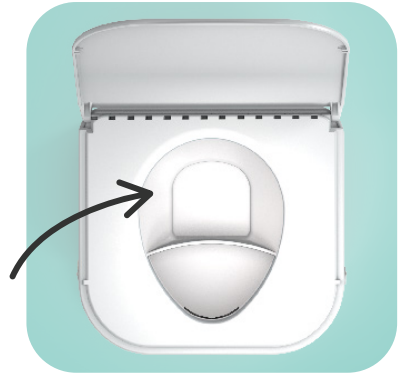
- Urine bottle holds just over **2.4 gallons** of liquid

## AIM URINE HERE



The urine funnels to the bottle below. Men should sit while using the toilet.

## KEEP TRAP DOOR CLOSED



Even if some urine gets into the trap door area, it will still properly funnel into the bottle below.

## SPRAY TO CLEAN BOWL



Spray bowl with a mixture of water and white vinegar.

## SEE LIGHT ON BUTTON



The button that starts the agitator also lights up when the urine level is ready to change.

# URINE DISPOSAL

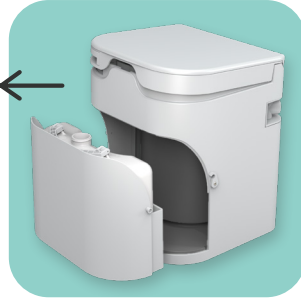
LIFT BOWL SLIGHTLY



ROTATE DRAWER LATCHES



PULL DRAWER OUT

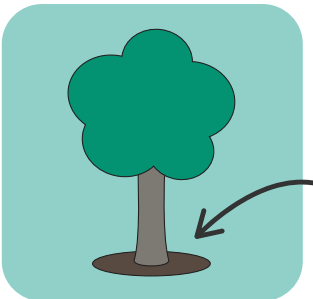


LIFT URINE BOTTLE OUT



The bowl must be lifted slightly  
to pull the drawer out

EMPTY BOTTLE



Empty either down the drain  
or on a mature tree outside

# SOLIDS USE

- Motor runs for **2 minutes**
- Solids bin has a capacity of **25-30 uses** before needing changed

## OPEN THE TRAP DOOR



Handle must be pulled **straight** forward.

## CLOSE WHEN DONE



Handle must be closed in the same way: **straight** back.

## PUSH BUTTON TO MIX



Button activates the motor and spins the agitator bar for 2 minutes to mix the bin contents.

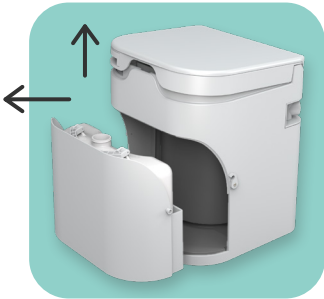
## SPRAY TO CLEAN BOWL



Spray bowl with a mixture of water and white vinegar.

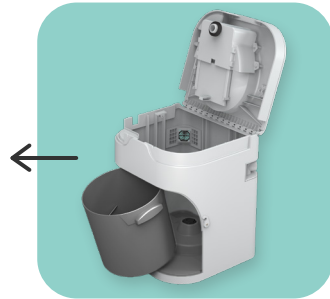
# SOLIDS DISPOSAL

## LIFT BOWL & PULL DRAWER



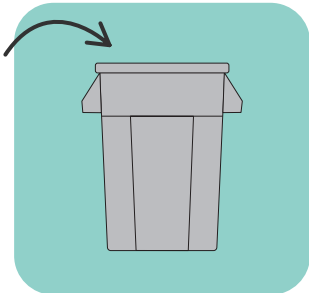
Lift bowl all the way up

## PULL SOLIDS BIN



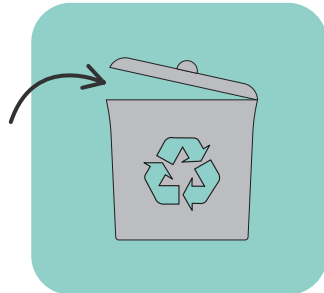
Pull bin from either the top or the front

## EMPTY IN TRASH



First, put bin contents into a trash bag

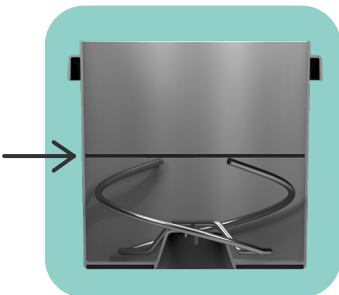
## EMPTY IN COMPOST BIN



or

6-12 months of compost

## REFILL SOLIDS BIN



Fill bin to fill line with peat moss or coco coir

## REPLACE SOLIDS BIN



Place bin so stir rod mounting bolts are facing the front

## TECH SPECS

The toilet is **15" deep** by **16" wide** by **18.5" tall**.

It weighs about **28 pounds**.





[ogotoilet.com](http://ogotoilet.com)  
[sales@ogotoilet.com](mailto:sales@ogotoilet.com)

