

# Maria E<sup>®</sup>

• F A J A S •

La piel de tu belleza



**FAJAS COLOMBIANAS**

# MariaE®

• F A J A S •  
La piel de tu belleza

We have taken every challenge that comes in our way as an opportunity to evolve, innovate, and remain committed to the high quality of our products; that is why we have designed functional and specific garments to have a lifestyle full of control and comfort.

Hemos aprovechado todos los desafíos que se nos presentan como una oportunidad para evolucionar, innovar y seguir comprometidos con la alta calidad de nuestros productos; es por eso que hemos diseñado prendas funcionales y específicas para que tengas un estilo de vida lleno de control y comodidad.

**100% Colombian products**



Productos 100% colombianos

**Recommended by specialists** as a complement to post-surgical processes.

Recomendada por los especialistas complemento de procesos postquirúrgicos

**Colombian brand** with presence in more than **20 countries.**

Marca colombiana con presencia en más de 20 países




# About us

Conoce nuestra experiencia




More than **17 years** of experience in the manufacture



**of control garments**

Más de 17 años de experiencia en manufactura en prendas de control.

**High standards of quality and safety**



**Our selection of fabrics and supplies and our review processes are of the highest quality**


Altos estándares de calidad y seguridad. Nuestra selección de telas e insumos y nuestros procesos de revisión son de la más alta calidad

We provide direct and indirect **employment** to more than **800 people** including more than **400** **mothers** who are heads of household.




Aportamos empleos directos e indirectos a más de 800 personas, entre ellos, más de 400 mujeres cabezas de familia.

**Thanks to good practices in quality processes and sanitary conditions, our girdles are certified by Invima.**

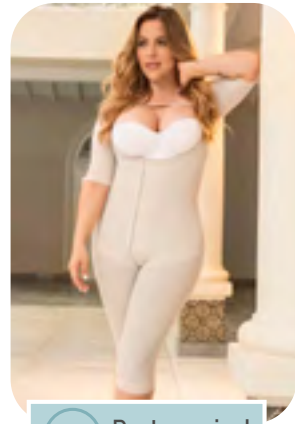


Gracias a las buenas prácticas en los procesos de calidad y condiciones sanitarias, nuestras fajas postquirúrgicas están certificadas por Invima.



# Our product lines

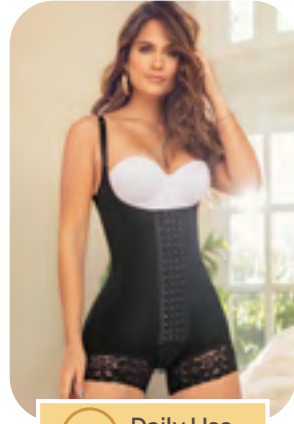
Nuestra línea de productos



**PQ** Post-surgical  
Postquirúrgica

Comfortable garments with designs that fit your routine. Made with materials such as Powernet, Triconet, and Latex.

Prendas elaboradas en telas hipoalergénicas que permiten acelerar el proceso de recuperación, después de un procedimiento quirúrgico o estético.



**UD** Daily Use  
Uso Diario

Garments made of hypoallergenic fabrics that accelerate the recovery process after a surgical or aesthetic procedure.

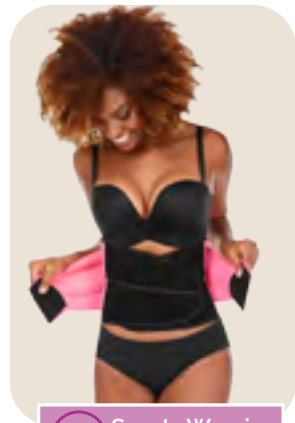
Prendas cómodas con diseños que se ajustan a tu rutina. Elaboradas con materiales como Powernet, Triconet y látex.



**PP** Postpartum  
Postparto

The Postpartum line helps you to shape your body in waist, legs, and hips. Recover your figure after childbirth.

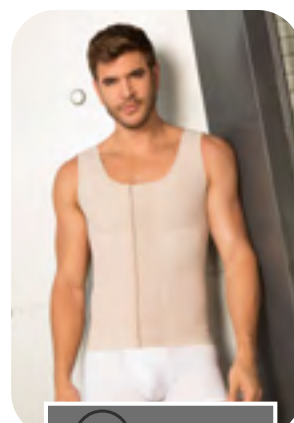
La línea Postparto te ayuda a moldear tu cuerpo en cintura, piernas y cadera. Recupera tu figura después del parto.



**DP** Sports Wearing  
Uso Deportivo

Waistbands and belts made of Latex and/or Neoprene, which provides better back support for weight-bearing exercises in the gym.

Cinturillas y cinturones elaborados en látex y/o neopreno, que brindan mejor soporte de espalda para ejercicios con peso en el gimnasio.



**MC** Male  
Masculina

Products for daily use, posture correction, abdominal control or to recover from surgery.

Productos para uso diario, corrección de postura, control de abdomen o para recuperarse de una intervención quirúrgica.

# Control LEVELS

Tipos de control

Meet our different levels of control, so you can identify which one would be your ideal girdle. Conoce nuestros diferentes niveles de control, para que identifiques cuál sería la faja ideal para ti.



LOW Básico	MEDIUM Medio	HIGH Fuerte	VERY HIGH Máximo
------------	--------------	-------------	------------------

This level of compression is the highest you can find in our products; It exerts the greatest type of pressure on areas such as back, waist, abdomen, and legs.

Este nivel de compresión, es el más alto que podrás encontrar en nuestros productos, ejerce el mayor tipo de presión en zonas como espalda, cintura, abdomen y piernas.

LOW Básico	MEDIUM Medio	HIGH Fuerte	VERY HIGH Máximo
------------	--------------	-------------	------------------

Ideal compression for those who have experience with the use of girdles and want more shaping daily or after a surgery, aesthetic or childbirth procedure.

Compresión ideal para quienes tienen experiencia con el uso de las fajas y desean mayor moldeamiento diario o después de un procedimiento quirúrgico, estético o del parto.

LOW Básico	MEDIUM Medio	HIGH Fuerte	VERY HIGH Máximo
------------	--------------	-------------	------------------

Ideal compression for those who just start wearing girdle, don't want to be too tight and prefer a softer girdles. Also, it's perfect for the first stage of surgery.

Compresión ideal para quienes apenas comienzan a usar faja, no quieren estar muy ajustadas y prefieren un moldeamiento más suave. Además, es perfecta para la primera etapa de una cirugía.

LOW Básico	MEDIUM Medio	HIGH Fuerte	VERY HIGH Máximo
------------	--------------	-------------	------------------

Ideal for women looking to have a smooth control at every moment of the day. You'll find comfortable and subtle garments, which help to shape the figure.

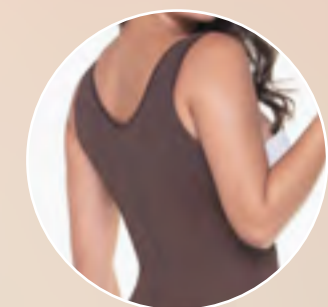
Compresión básica, ideal para mujeres que buscan tener un control suave en cada momento del día. Encontrarás prendas cómodas y sutiles, que ayudan a moldear la figura.



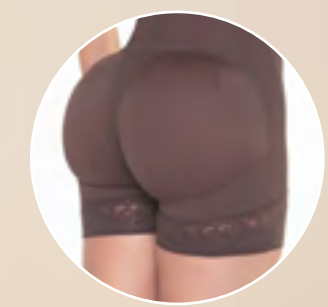
# Ash and Chocolate

The ash and chocolate colors are neutral, warm and natural tones that connect us with the earth. Los colores cenizo y chocolate son tonos neutros, cálidos y naturales que nos conectan con la tierra.

More defined waist  
cintura más definida



High coverage  
Alto cubrimiento



More enhancement  
Más realce

- PQ** Post-surgical Second stage Postquirúrgica 2da etapa
  - UD** Daily use Uso Diario
  - PP** Postpartum Postparto
- Colors:**  
Cocoa ●  
Black ●  
Ash ●  
Chocolate ●
- Size:**  
XS to 3XL

**REF. FQ110**  
**SHORT GIRDLE IN POWERNET**  
Perineal opening with reinforcement, covered in cold touch Nylon and 4 levels of adjustment. Siliconized lace. Abertura perineal con refuerzo, recubierta en Nylon de tacto frío con 4 niveles de ajuste y cargaderas graduables. Blonda siliconda.

Control level | Tipo de control

LOW Básico	MEDIUM Medio	<b>HIGH Fuerte</b>	VERY HIGH Máximo
------------	--------------	--------------------	------------------

# Empower

YOURSELF WITH YOUR CURVES

Empodérate con tus curvas



- PQ** Post-surgical  
Second stage  
Postquirúrgica  
2da etapa
- UD** Daily use  
Uso Diario
- PP** Postpartum  
Postparto

**REF. FQ113  
SHORT GIRDLE IN  
POWERNET**

Perineal opening with reinforcement. Covered in cold touch Nylon. Recubierta en Nylon de tacto frío y blonda siliconada en pierna. Abertura perineal con refuerzo.

Double abdomen reinforcement  
Doble refuerzo en abdomen

High coverage  
Alto cubrimiento

More enhancement  
Más realce

Control level | Tipo de control

LOW Básico	MEDIUM Medio	<b>HIGH Fuerte</b>	VERY HIGH Máximo
---------------	-----------------	------------------------	---------------------

Colors: Cocoa ●  
Ash ● Chocolate ●  
Size: XS to 3XL

**REF. FQ113**



Lateral zipper with internal snaps  
Cierre lateral con broches internos



Adjustable straps  
Tiras ajustables



Siliconized lace  
Blonda siliconada



*Colors that inspire!*

**¡Colores que inspiran!**

**REF. FQ112  
MID-THIGH GIRDLE IN  
POWERNET**

Perineal opening with reinforcement, covered in cold touch Nylon and 4 levels of adjustment.

Recubierta en Nylon de tacto frío y 4 niveles de ajuste frontal. Abertura perineal con refuerzo.

*Removable shoulder straps*  
Tiras removibles

*2 levels of adjustment in shoulders*  
2 niveles de ajuste en hombros

*Better design in waist and hips*  
Mejor diseño en cintura y cadera

*More defined waist*  
Cintura más definida

*High coverage*  
Alto cubrimiento

*More enhancement*  
Más realce

*Leg control*  
Control de pierna

*More enhancement*  
Más realce

**PQ** Post-surgical  
Second stage  
Postquirúrgica  
2da etapa

**UD** Daily use  
Uso Diario

**PP** Postpartum  
Postparto

**Colors:** Cocoa ●  
Ash ● Chocolate ●

**Size:** XS to 3XL

Control level | Tipo de control

LOW Básico   MEDIUM Medio   **HIGH Fuerte**   VERY HIGH Máximo

**PQ** Post-surgical  
Second stage  
Postquirúrgica  
2da etapa

**UD** Daily use  
Uso Diario

**PP** Postpartum  
Postparto

**Colors:**  
Chocolate ●  
Ash ● Cocoa ●

**Size:** XS to 3XL

**REF. FQ115  
MID-THIGH GIRDLE  
IN POWERNET**

With bra and front snaps, perineal opening with reinforcement. Covered in cold touch Nylon.

Con brasier y broches frontales, abertura perineal con refuerzo. Recubierta en Nylon de tacto frío.

Control level | Tipo de control

LOW Básico   MEDIUM Medio   **HIGH Fuerte**   VERY HIGH Máximo





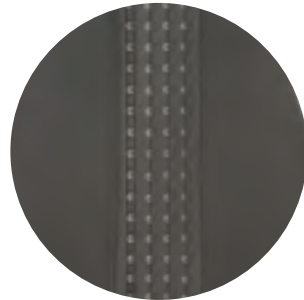
2 levels of adjustment in shoulders  
2 niveles de ajuste en hombros

Better design in waist and hips  
Mejor diseño en cintura y cadera

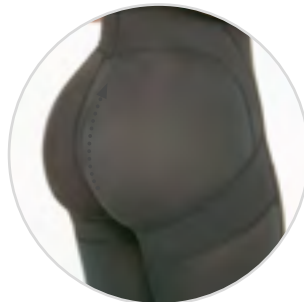
Leg control  
Control de pierna



High coverage  
Alto cubrimiento



4 levels of adjustment  
4 niveles de ajuste



More enhancement  
Más realce

**PQ** Post-surgical Second stage  
Postquirúrgica 2da etapa

**UD** Daily use  
Uso Diario

**PP** Postpartum  
Postparto

**Colors:**  
Cocoa ●  
Ash ●  
Chocolate ●

**Size:**  
XS to 3XL

**REF. FQ111  
LONG GIRDLE IN POWERNET**  
With front snaps, perineal opening with reinforcement. Covered in cold touch Nylon.  
Abertura perineal con refuerzo y recubierta en Nylon de tacto frío.

Control level | Tipo de control

LOW Básico	MEDIUM Medio	<b>HIGH Fuerte</b>	VERY HIGH Máximo
------------	--------------	--------------------	------------------



More defined waist  
Cintura más definida

**PQ** Post-surgical Second stage  
Postquirúrgica 2da etapa

**UD** Daily use  
Uso Diario

**PP** Postpartum  
Postparto

**Colors:** Cocoa ●  
Ash ●  
Chocolate ●

**Size:** XS to 3XL

**REF. FQ114  
LONG GIRDLE IN POWERNET**

With sleeves, hip enhancement and bust flap. Covered in cold touch Nylon.  
Con mangas, 4 niveles de ajuste y cargadera removible en busto. Recubierta en Nylon tacto frío. Abertura perineal con refuerzo.

Control level | Tipo de control

LOW Básico	MEDIUM Medio	<b>HIGH Fuerte</b>	VERY HIGH Máximo
------------	--------------	--------------------	------------------



Arm control  
Control de brazo

Leg control  
Control de pierna

Buttocks enhancement  
Realce de glúteos

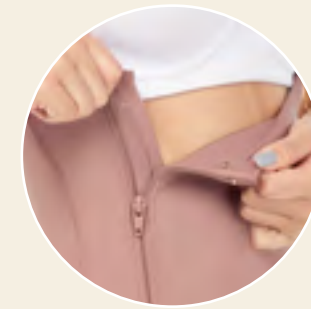
# Cocoa Color

Our new cocoa color adapts very well to all skin tones, generates an optical effect that helps the girdle not to be noticed with outer clothing. Nuestro nuevo color cocoa se adapta muy bien a todos los tonos de piel, genera un efecto óptico, para que la faja no se note con la ropa exterior.



# Recovery with total comfort

¡Recupérate con total comodidad!



Lateral zipper with internal snaps  
Cierre lateral con broches internos



Double abdomen reinforcement  
Doble refuerzo en abdomen

High rise  
Mayor realce

- PQ** Post-surgical Second stage Postquirúrgica 2da etapa
- UD** Daily use Uso Diario
- PP** Postpartum Postparto

Colors: Cocoa ● Ash ● Chocolate ●  
Size: XS to 3XL

**REF. FQ113 SHORT GIRDLE IN POWERNET**  
With high coverage in the back, covered in cold touch Nylon and siliconized lace in the leg. Perineal opening with reinforcement.  
Con alto cubrimiento en espalda, recubierta en Nylon de tacto frío y blanda siliconada en pierna. Abertura perineal con refuerzo.

Control level | Tipo de control

LOW Básico	MEDIUM Medio	<b>HIGH Fuerte</b>	VERY HIGH Máximo
------------	--------------	--------------------	------------------





- PQ** Post-surgical  
Second stage  
Postquirúrgica  
2da etapa
- UD** Daily use  
Uso Diario
- PP** Postpartum  
Postparto

**Colors:**  
 Cocoa ●  
 Black ●  
 Ash ●  
 Chocolate ●  
**Size:**  
 XS to 3XL

**REF. FQ110**  
**SHORT GIRDLE IN POWERNET**

With front snaps, perineal opening with reinforcement, covered in cold touch Nylon and siliconized lace on the leg.

Con broches frontales, abertura perineal con refuerzo, recubierta en Nylon de tacto frío y blonda siliconada en pierna.

Control level | Tipo de control

- |               |                 |                              |                     |
|---------------|-----------------|------------------------------|---------------------|
| LOW<br>Básico | MEDIUM<br>Medio | <b>HIGH</b><br><b>Fuerte</b> | VERY HIGH<br>Máximo |
|---------------|-----------------|------------------------------|---------------------|

*More defined waist*  
 Cintura más definida

REF. FQ110



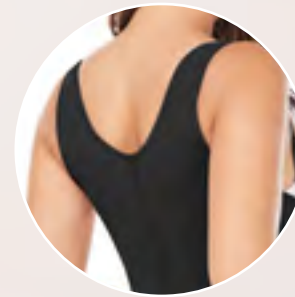
*Adjustable straps*  
 Tiras ajustables



*Siliconized lace in the leg*  
 Blonda siliconada



*4 levels of adjustment*  
 4 niveles de ajuste



*High coverage*  
 Alto cubrimiento

**PERFECT**  
*Curves*  
 Curvas perfectas



*Buttocks enhancement.*  
 Realce de glúteos

**PQ** Post-surgical  
Second stage  
Postquirúrgica  
2da etapa

**UD** Daily use  
Uso Diario

**PP** Postpartum  
Postparto

Colors: Cocoa ●  
Ash ● Chocolate ●

Size: XS to 3XL

**REF. FQ115  
MID-THIGH GIRDLE IN  
POWERNET**

With bra and front snaps, perineal opening with reinforcement.  
Covered in cold touch Nylon.  
Con brasier y broches frontales,  
abertura perineal con refuerzo.  
Recubierta en Nylon de tacto frío.

Control Level | Tipo de control

LOW Básico   MEDIUM Medio   **HIGH Fuerte**   VERY HIGH Máximo

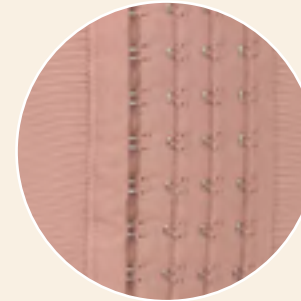


*2-position shoulder brooch*  
Alto cubrimiento  
2 niveles de ajuste en hombros

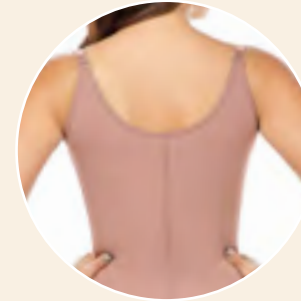


*High coverage*  
Alto cubrimiento

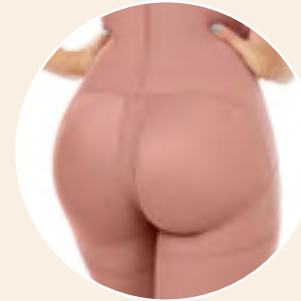
*More enhancement and more defined waist.*  
Mejor realce y cintura más definida



*4 levels of adjustment*  
4 niveles de ajuste



*High coverage*  
Alto cubrimiento



*More enhancement*  
Más realce

*Removable shoulder straps*  
Cargaderas removibles

*Better design in waist and hips*  
Mejor diseño en cintura y cadera

**PQ** Post-surgical  
Second stage  
Postquirúrgica  
2da etapa

**UD** Daily use  
Uso Diario

**PP** Postpartum  
Postparto

Colors: Cocoa ●  
Ash ● Chocolate ●

Size: XS to 3XL

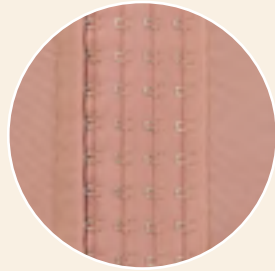
**REF. FQ112  
MID-THIGH GIRDLE IN  
POWERNET**

Covered in cold touch Nylon.  
Removable shoulder straps.  
Recubierta en Nylon de tacto frío y  
abertura perineal con refuerzo.

Control Level | Tipo de control

LOW Básico   MEDIUM Medio   **HIGH Fuerte**   VERY HIGH Máximo





4 levels of adjustment  
4 niveles de ajuste

2 positions clasp on shoulder  
2 niveles de ajuste en hombros

More defined waist  
Cintura más definida

Natural buttocks enhancement  
Realce natural de glúteos

- PQ** Post-surgical Second stage Postquirúrgica 2da etapa
- UD** Daily use Uso Diario
- PP** Postpartum Postparto

Colors: Cocoa ● Ash ● Chocolate ●  
Size: XS to 3XL

**REF. FQ111 LONG GIRDLE IN POWERNET**

With front snaps, perineal opening with reinforcement. Covered in cold touch Nylon. Con 4 niveles de ajuste, abertura perineral con refuerzo, recubierta en nylon de tacto frío.

Control level | Tipo de control

LOW Básico	MEDIUM Medio	<b>HIGH Fuerte</b>	VERY HIGH Máximo
------------	--------------	--------------------	------------------



- PQ** Post-surgical Second stage Postquirúrgica 2da etapa
- UD** Daily use Uso Diario
- PP** Postpartum Postparto

Colors: Cocoa ● Ash ● Chocolate ●  
Size: XS to 3XL

**REF. FQ114 CAPRI GIRDLE IN POWERNET**

With sleeves, buttocks enhancement and bust flap. Covered in cold touch Nylon. Con mangas, realce de glúteos y cargadera removible en busto. Recubierta en Nylon tacto frío.

Control level | Tipo de control

LOW Básico	MEDIUM Medio	<b>HIGH Fuerte</b>	VERY HIGH Máximo
------------	--------------	--------------------	------------------

Arm control  
Control de brazo

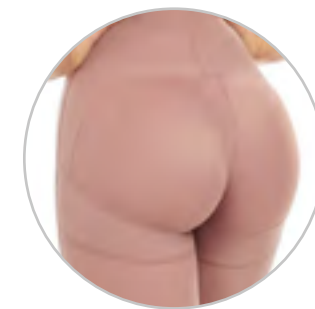


4 levels of adjustment  
4 niveles de ajuste



Bust flap  
Cargadera en busto

Leg control  
Control de pierna



More enhancement  
Más realce



High coverage  
Alto cubrimiento

Your favorite girdle in all colors

Tu faja favorita en todos los colores



**PQ** Post-surgical  
Second stage  
Postquirúrgica  
2da etapa

**UD** Daily use  
Uso Diario

**PP** Postpartum  
Postparto



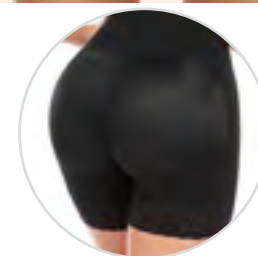
**Colors:**  
Beige ● Cocoa ● Moca ●  
Ash ● Black ● Chocolate ●

**Size:** XS to 3XL

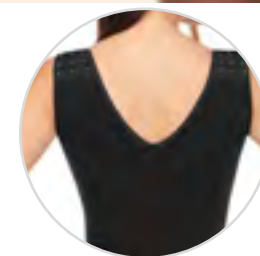
**Control level | Tipo de control**

LOW Básico	MEDIUM Medio	HIGH Fuerte	VERY HIGH Máximo
---------------	-----------------	----------------	---------------------

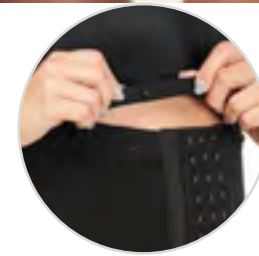
**REF. FQ102  
SHORT GIRDLE IN POWERNET**  
With front snaps, perineal opening with reinforcement and siliconized lace on leg. Covered in cold touch Nylon. Natural buttocks enhancement and siliconized lace. Con broches frontales, abertura perineal con refuerzo y blonda siliconada en pierna. Recubierta en Nylon de tacto frío. Realce natural de glúteos.



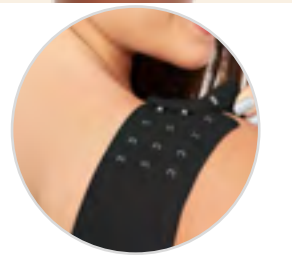
**Buttocks enhancement**  
Realce de glúteos



**High coverage**  
Alto cubrimiento



**Bra with front brooch**  
Brasier con broches



**4 position clasp on shoulders**  
4 niveles de ajuste en hombros

# Hourglass line



## Línea Reloj de Arena

**In our new line of girdles, you will find garments especially for women with small waists, large and wide hips.**

En nuestra nueva línea de fajas, Reloj de Arena, podrás encontrar prendas especialmente para mujeres con cintura pequeña, caderas grandes y anchas.



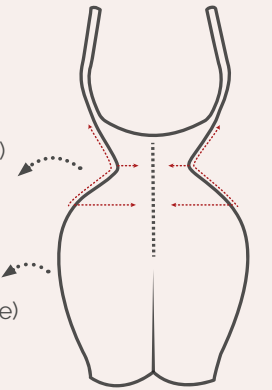
# Silhouette types

## HOURGLASS

Reloj de Arena

**Ultra small waist**  
(2 sizes less than a standard girdle)  
**Ultra small waist**  
(2 tallas menos que una faja estándar)

**Extra large hips and legs**  
(2 sizes more than a standard girdle)  
**Caderas y piernas extra grandes**  
(2 tallas más que una faja estándar)



### ¡SPECIAL SIZE! MEDIDA ESPECIAL

SCAN THE QR CODE AND SEE THE MEASUREMENT TABLE

Escanea el código qr y mira la tabla de medidas



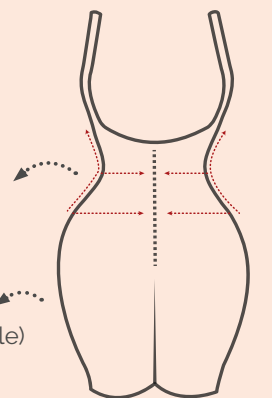
CREAR QR

## SEMI HOURGLASS

Semi Reloj de Arena

**Small waist**  
(1 size less than a standard girdle)  
**Cintura pequeña**  
(1 talla menos que una faja estándar)

**Large hips and legs**  
(2 sizes more than a standard girdle)  
**Caderas y piernas grandes**  
(2 tallas más que una faja estándar)



### ¡SPECIAL SIZE! MEDIDA ESPECIAL

SCAN THE QR CODE AND SEE THE MEASUREMENT TABLE

Escanea el código qr y mira la tabla de medidas



CREAR QR

**UD** Daily use  
Usado Diario

**REF. RA001  
MID-THIGH GIRDLE IN  
POWERNET**

With bra, 4 levels of adjustment, perineal opening with reinforcement and silicone lace. Covered in cold touch Nylon.

Con brasier, 4 niveles de ajuste, abertura perineal con refuerzo y blanda siliconada. Recubierta en Nylon tacto frío.

Control level | Tipo de control

LOW Básico	MEDIUM Medio	HIGH Fuerte	VERY HIGH Máximo
---------------	-----------------	----------------	---------------------

**Colors:**  
Beige ● Black ● Chocolate ●  
**Size:** XS to L

**HOURGLASS**  
Reloj de  
Arena

Clasp on  
shoulder  
Broches en  
hombros

4 rods  
for better  
molding  
4 varillas para  
mejor moldeo

Ultra small  
waist  
Cintura ultra  
pequeña

Hips and legs  
extra large  
Silueta de  
cadera y  
piernas extra  
grandes



**UD** Daily use  
Usado Diario

**REF. RA002  
MID-THIGH GIRDLE IN  
POWERNET**

4 level of adjustment, perineal opening with reinforcement, silicone lace. Covered in cold touch Nylon.

4 niveles de ajuste, abertura perineal con refuerzo, blanda siliconada y cargadera ajustable. Recubierta en Nylon tacto frío.

**Colors:**

Beige ● Black ● Chocolate ●

**Size:** XS to L

Control level | Tipo de control

LOW Básico	MEDIUM Medio	HIGH Fuerte	VERY HIGH Máximo
---------------	-----------------	----------------	---------------------

**HOURGLASS**  
Reloj de  
Arena

4 rods  
for better  
molding  
4 varillas para  
mejor moldeo

High coverage  
Alto cubrimiento

4 levels of adjustment  
4 niveles de ajuste

Ultra small waist,  
hips and legs  
extra large

Cintura ultra pequeña, cadera  
y piernas extra grandes



**UD** Daily use  
Uso Diario

**HOURGLASS**  
Reloj de  
Arena

**REF. RA004  
POWERNET WAISTCOAT**

Covered in cold touch Nylon,  
4 levels of adjustment.  
Recubierto en Nylon tacto frío.  
4 niveles de ajuste.

Control level | Tipo de control

LOW Básico   MEDIUM Medio   HIGH Fuerte   **VERY HIGH Máximo**

Colors:  
Beige ○ Black ● Chocolate ●  
Size: XS to L



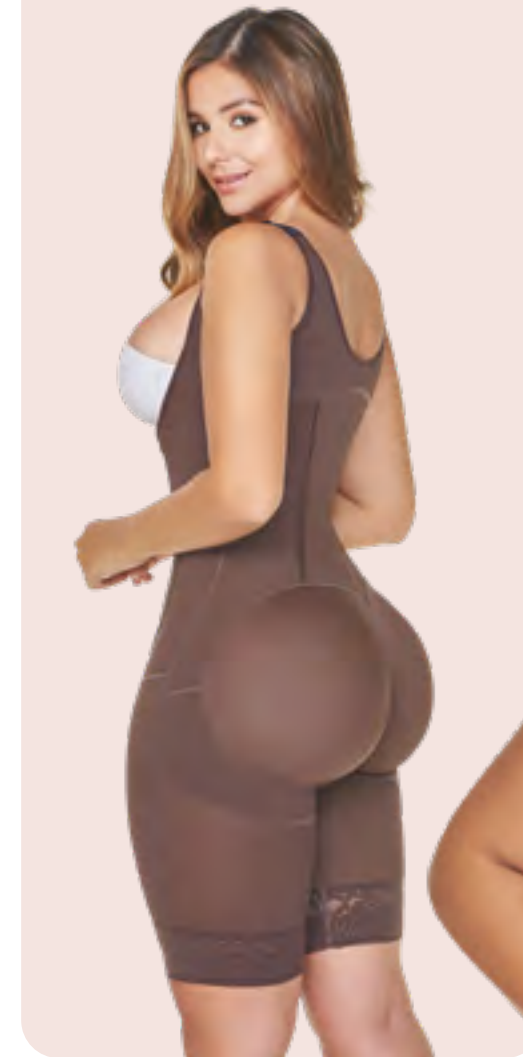
7 rods for better  
molding  
7 varillas para  
mejor moldeo



Adjustable  
straps  
Tiras ajustables

Ultra  
small  
waist  
Cintura ultra  
pequeña

**HOURGLASS**  
Reloj de  
Arena



Ultra small waist, hips and legs  
extra large  
Cintura ultra pequeña, cadera  
y piernas extra grandes

**IMPACT  
curves**  
Curvas de impacto

**UD** Daily use  
Uso Diario

**REF. RA003  
MID-THIGH GIRDLE IN  
POWERNET**

Covered in cold touch Nylon.  
Front closure, removable straps  
and silicone lace.  
Recubierta en Nylon tacto  
frío. Cierre frontal, cargaderas  
removible y blonda siliconada.

Control level | Tipo de control

LOW Básico   MEDIUM Medio   HIGH Fuerte   **VERY HIGH Máximo**



4 rods  
for better  
molding  
4 varillas para  
mejor moldeo

Perineal  
closure  
Abertura  
perineal con  
cierre

**HOURGLASS**  
Reloj de  
Arena

**Double  
abdomen  
reinforcement**  
Doble  
refuerzo



Daily use  
Uso Diario

**REF. RA005  
MID-THIGH GIRDLE IN  
POWERNET**

Perineal opening with  
reinforcement, covered in cold  
touch Nylon and 4 levels of  
adjustment.

Recubierta en Nylon tacto frío, 4  
niveles de ajuste y abertura perineal  
con refuerzo.

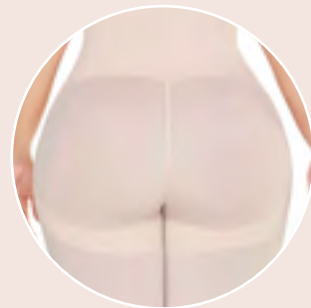
Control level | Tipo de control



**Colors:**

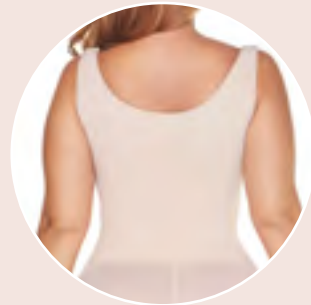
Beige ○ Black ● Chocolate ●

**Size:** XS to L



**Ultra small waist, hips and  
legs extra large**

Cintura ultra pequeña, cadera  
y piernas extra grandes

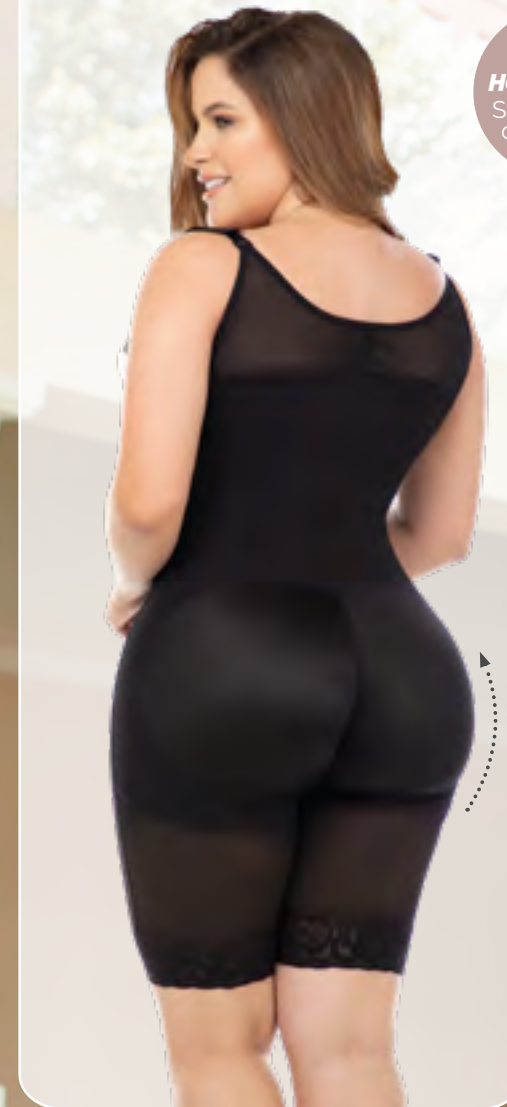


**High coverage**  
Alto cubrimiento



**Clasp on shoulder**  
Broches en hombros

**SEMI  
HOURGLASS**  
Semi Reloj  
de Arena



Daily use  
Uso Diario

**REF. 9277  
MID-THIGH GIRDLE IN POWERNET**

Perineal opening with reinforcement,  
covered in cold touch Nylon and 4 levels  
of adjustment. Small waist, hips and legs  
large.

Recubierta en Nylon de tacto frío, cargaderas  
con almohadillas removibles. Cintura  
pequeña, cadera y piernas grandes, con  
abertura perineal y realce de glúteos.

Control level | Tipo de control



**Colors:** Black ● Beige ○

**Size:** XS to 3XL

**4 levels of  
adjustment**  
4 niveles de  
ajuste



**Waist, hips  
and leg high  
control**  
Control fuerte en  
cintura y cadera



# NEW SHORTS

They are ideal for women with small waist and large hips, who want to have a natural buttock enhancement with greater control in the abdomen.  
 Son ideales para mujeres con cintura pequeña y cadera grande, que quieran tener un realce de glúteos natural con mayor control en abdomen.

**SEMI HOURGLASS**  
 Semi Reloj de Arena



**Natural buttocks enhancement**  
 Realce natural de glúteos

**Siliconized elastic waistband**  
 Elástico siliconado

**Silicone lace**  
 Blonda siliconada

**UD** Daily use  
 Uso Diario

**Colors:**  
 Cocoa ●  
 Black ●  
 Ash ●  
 Chocolate ●  
**Size:** XS to 3XL

**REF. FC302**  
**POWERNET HIGH WAISTED SHORT**  
 With abdomen control and butt lift. Opening with perineal closure. Small waist, hips and legs large.  
 Con control de abdomen y levanta cola. Abertura con cierre perineal. Cintura pequeña, cadera y piernas grandes.

Control level | Tipo de control

LOW Básico	MEDIUM Medio	<b>HIGH Fuerte</b>	VERY HIGH Máximo
------------	--------------	--------------------	------------------



**Front clasp and perineal closure**  
 Broche frontal y cierre perineal

*Enhance your natural beauty!*  
 ¡Realza tu belleza natural!

**UD** Daily use  
 Uso Diario

**REF. FC304**  
**POWERNET HIGH SHORT**  
 With abdominal control and buttocks lift. Opening with perineal zipper and siliconized elastic waistband. **Small waist, hips and large legs.**  
 Con control de abdomen y levanta cola. Abertura con cierre perineal y elástico siliconado en cintura. **Cintura pequeña, cadera y piernas grandes.**

Control level | Tipo de control

LOW Básico	MEDIUM Medio	<b>HIGH Fuerte</b>	VERY HIGH Máximo
------------	--------------	--------------------	------------------

**Colors:** Black ●  
 Cocoa ● Ash ●  
 Chocolate ●  
**Size:** XS to 3XL



**Small waist**  
 Cintura pequeña



**Front clasp and perineal closure**  
 Broche frontal y cierre perineal

**SEMI HOURGLASS**  
 Semi Reloj de Arena



**Natural buttocks enhancement**  
 Realce natural de glúteos

**Silicone lace**  
 Blonda siliconada



# Short girdles

Variety, comfort, and quality

Fajas cortas variedad, comodidad y calidad

NEW



**UD** Daily use  
Usado Diario

**PP** Postpartum  
Postparto

Colors:  
Beige ○  
Black ●  
Size: XS to 3XL

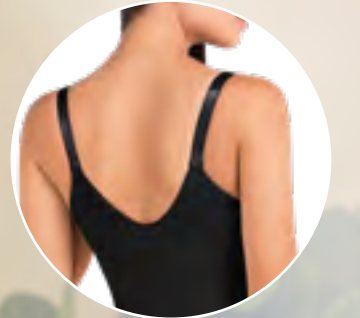
**REF. FL101**  
**PANTY GIRDLE IN POWERNET**  
Abdomen in latex, with Front closure,  
Perineal area clasp.  
Abdomen en Látex, con cierre frontal.  
Broche en zona perineal.

Control level | Tipo de control

LOW Básico	MEDIUM Medio	HIGH Fuerte	VERY HIGH Máximo
---------------	-----------------	----------------	---------------------



Abdomen in Latex  
Double reinforcement in abdomen  
Abdomen en Látex  
Doble refuerzo en abdomen



Back covering  
Cubrimiento de espalda



Elastic in hip  
Blonda siliconada



**UD** Daily use  
Uso Diario

**PP** Postpartum  
Postparto

**Colors:**  
Beige ○  
Black ●

**Size:** XS to 3XL

**REF. 9415**  
**PANTY GIRDLE IN**  
**POWERNET**

Cotton covered panty girdle, with front closure with internal snaps, 2 level adjustment in perineal area.  
Recubierta en algodón, con cierre delantero y broches internos, ajuste de 2 niveles en zona perineal.

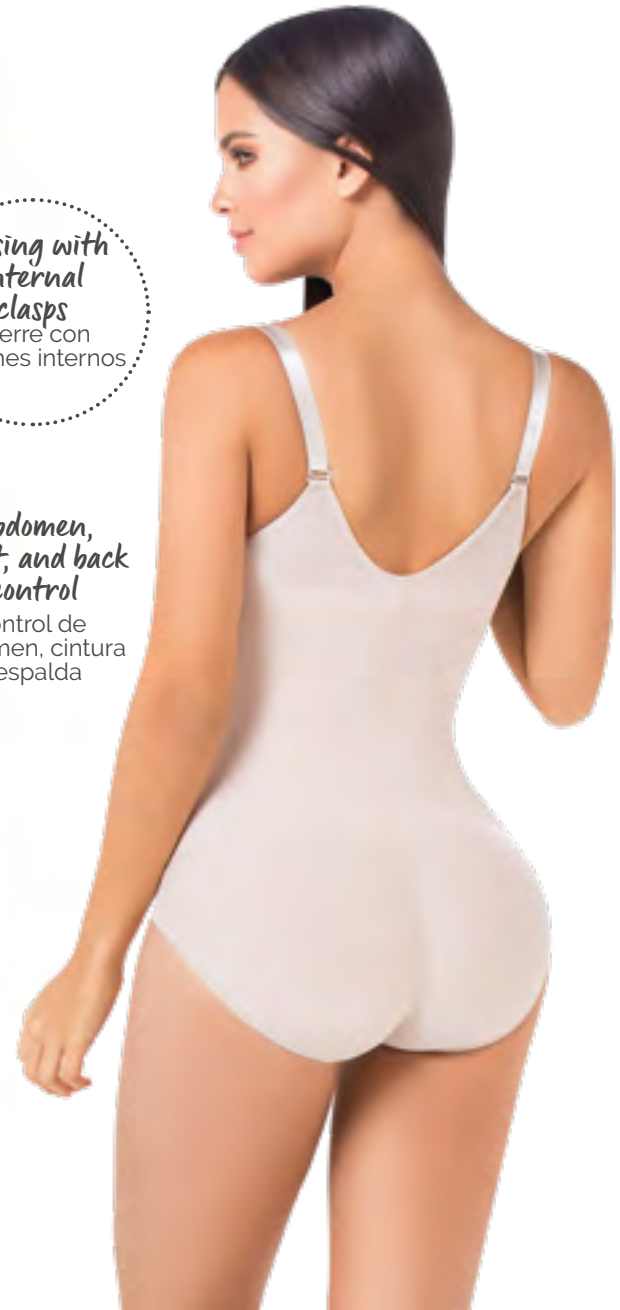
Control level | Tipo de control

LOW Básico	MEDIUM Medio	HIGH Fuerte	<b>VERY HIGH</b> Máximo
---------------	-----------------	----------------	----------------------------

*Your ideal company*  
for day to day  
Tu acompañante ideal para el día a día

*Closing with internal clasps*  
Cierre con broches internos

*Abdomen, waist, and back control*  
Control de abdomen, cintura y espalda



*Strapless design*  
Diseño strapless



*Siliconized waistband*  
Siliconado en cintura



*Removable straps*  
Cargaderas removibles



*Buttocks enhancement*  
Realce de glúteos

*Abdomen and waist control*  
Control de abdomen y cintura

**UD** Daily use  
Uso Diario

**PP** Postpartum  
Postparto

**Colors:**  
Beige ○  
Black ●

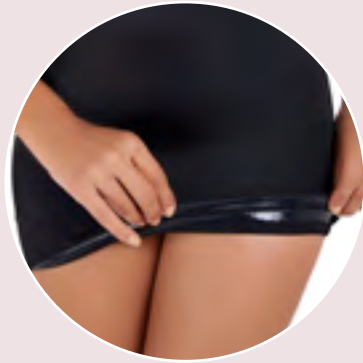
**Size:** XS to 3XL

**REF. 9143**  
**SHORT GIRDLE IN POWERNET**

Covered in cotton with strapless design, Lateral closure with internal snaps and closure in perineal opening.  
Recubierta en algodón con diseño strapless, cierre lateral con broches internos y cierre en abertura perineal.

Control level | Tipo de control

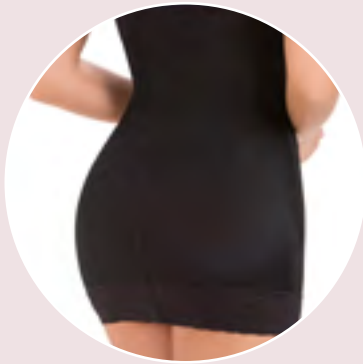
LOW Básico	MEDIUM Medio	HIGH Fuerte	<b>VERY HIGH</b> Máximo
---------------	-----------------	----------------	----------------------------



**Blonda siliconada**  
Blonda siliconada



**Elastic waistband**  
Elástico en cintura



**Removable straps**  
Cargaderas removibles

**Abdomen, waist, and back control.**  
Control de abdomen, cintura.



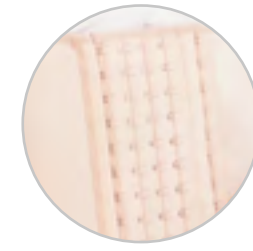
**UD** Daily use  
Uso Diario

**Colors:**  
Beige ○  
Black ●  
**Size:** XS to 3XL

Control level | Tipo de control

LOW Básico    **MEDIUM Medio**    HIGH Fuerte    VERY HIGH Máximo

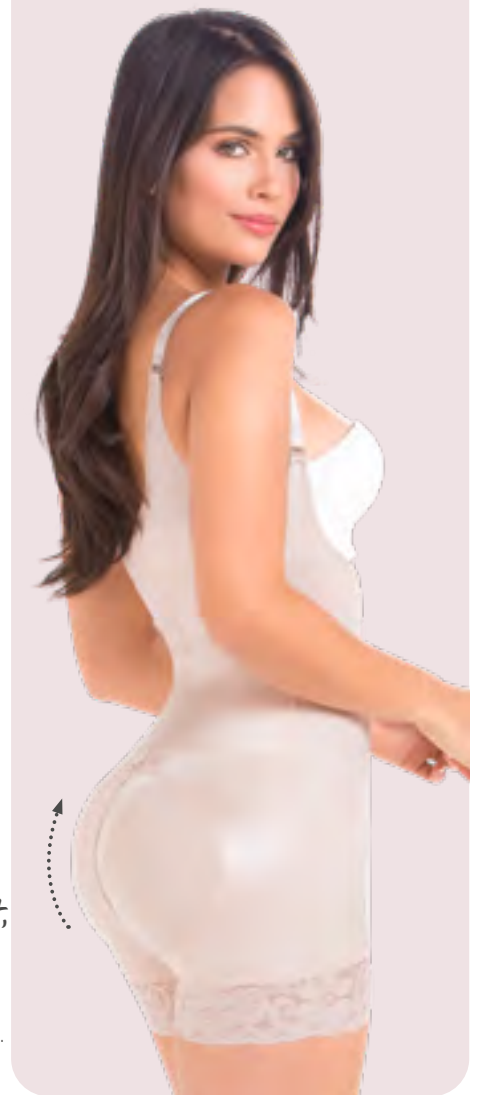
**REF. FU112 DRESS GIRDLE IN TRICONET**  
Covered in cotton with strapless design.  
Recubierto en algodón con diseño strapless.



**Removable extension of 4 clasps, plus a fixed clasps level.**

Extensión removable de 4 niveles de broches, más un nivel de broche fijo

**Abdomen, waist, back and hip control**  
Control de abdomen, cintura.



**Hip enhancement and perineal opening with panty**  
Realce de cadera y abertura perineal con panty

**PQ** Post-surgical  
First stage  
Postquirúrgica  
1ra etapa

**UD** Daily use  
Uso Diario

**PP** Postparto  
Postpartum



**REF. 9531 SHORT GIRDLE IN TRICOT**  
Covered in cotton. High back for greater coverage. Recubierta en algodón, cobertura de espalda.

Control level | Tipo de control

LOW Básico    **MEDIUM Medio**    HIGH Fuerte    VERY HIGH Máximo

**Colors:** Moca ● Beige ○  
**Size:** XS to 3XL

**UD** Daily use  
Uso Diario

**PP** Postpartum  
Postparto

Colors: Beige ○  
Black ●  
Size: XS to 3XL

**REF. 9831  
SHORT GIRDLE IN  
POWERNET**

Covered in cotton, front closure with internal snaps, armhole sleeve design with 2 levels of adjustment, closure in perineal opening.

Recubierta en algodón, cierre delantero con broches internos, diseño en manga sisa. Abertura perineal con cierre.

Control level | Tipo de control

LOW Básico   MEDIUM Medio   HIGH Fuerte   **VERY HIGH Máximo**



**Back coverage**  
Cubrimiento de espalda



**Buttocks enhancement**  
Realce de glúteos



Closing with internal clasps  
Cierre con broches internos

2 positions clasp on shoulder  
2 niveles de ajuste

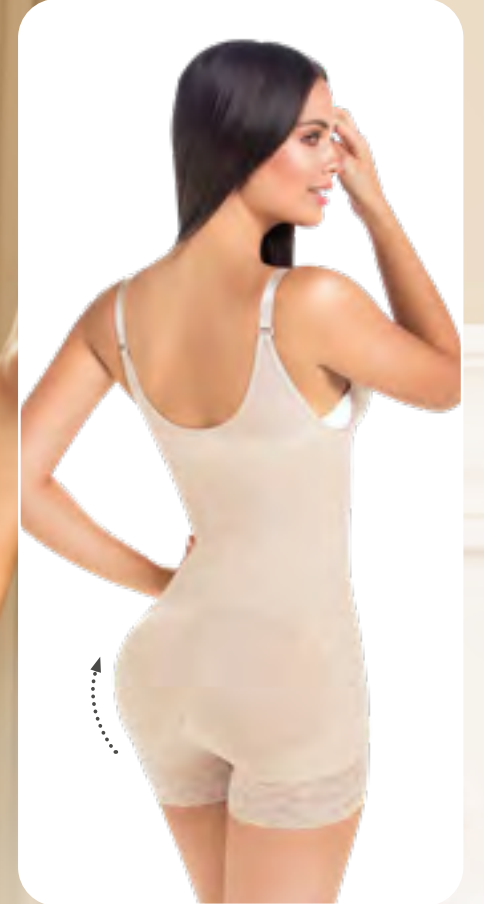
abdomen, waist, back and hip control  
Control de abdomen, cintura y espalda

*Perfect*  
**FITTING**

Closing with internal clasps  
Cierre con broches internos



Abdomen, waist, back and hip control  
Control de abdomen, cintura y espalda



**Buttocks enhancement**  
Realce de glúteos

**UD** Daily use  
Uso Diario

**PP** Postpartum  
Postparto

Colors: Beige ○  
Black ●  
Size: XS to 3XL

**REF. 9235  
SHORT GIRDLE IN  
POWERNET**

Covered in cotton. High back, perineal opening.  
Recubierta en algodón. Espalda alta para mayor cubrimiento, abertura perineal.

Control level | Tipo de control

LOW Básico   MEDIUM Medio   HIGH Fuerte   **VERY HIGH Máximo**



- PQ Post-surgical  
Second stage  
Postquirúrgica  
2da etapa
- UD Daily use  
Uso Diario
- PP Postpartum  
Postparto

Colors: Moca ●  
Size: XS to 3XL

*Abdomen,  
waist, back  
and hip  
control*

Control de  
abdomen,  
cintura y  
espalda



**REF. 9633  
SHORT GIRDLE IN POWERNET**  
Covered in cool touch Nylon. With  
perineal opening.  
Recubierta en Nylon de tacto frío.  
Con abertura perineal.

Control level | Tipo de control

- |               |                 |                        |                     |
|---------------|-----------------|------------------------|---------------------|
| LOW<br>Básico | MEDIUM<br>Medio | <b>HIGH<br/>Fuerte</b> | VERY HIGH<br>Máximo |
|---------------|-----------------|------------------------|---------------------|



*Lateral closure with  
internal snaps*  
Cierre lateral con  
broches internos



*Buttocks enhancement*  
Realce de glúteos

YOU WILL WANT  
TO HAVE IT  
*forever!*  
La vas a querer tener siempre



*Perineal closure  
Buttocks enhancement.*  
Abertura perineal y realce de glúteos

- UD Daily use  
Uso Diario
- PP Postpartum  
Postparto



**REF. FP100  
SHORT GIRDLE IN POWERNET**  
Covered in cotton with adjustable  
straps, 2 levels of front adjustment.  
Recubierta en algodón con cargaderas  
graduables, 2 niveles de ajuste frontal.

Control level | Tipo de control

- |               |                 |                |                             |
|---------------|-----------------|----------------|-----------------------------|
| LOW<br>Básico | MEDIUM<br>Medio | HIGH<br>Fuerte | <b>VERY HIGH<br/>Máximo</b> |
|---------------|-----------------|----------------|-----------------------------|

Colors: Beige ○  
Size: XS to 3XL



*Abdomen,  
waist, back  
and hip  
control*

Control de  
abdomen,  
cintura y  
espalda

# Wellness FOR YOUR DAY

Bienestar para tu día

- PQ** Post-surgical  
Second stage  
Postquirúrgica  
2da etapa
- UD** Daily use  
Uso Diario
- PP** Postpartum  
Postparto

## REF. 9434 SHORT GIRDLE IN POWERNET

Covered in cool touch Nylon  
with adjustable straps.  
Recubierta en Nylon de tacto  
frio. Blonda siliconada. 4  
niveles de ajuste.

Control level | Tipo de control

- LOW  
Básico
- MEDIUM  
Medio
- HIGH  
Fuerte**
- VERY HIGH  
Máximo

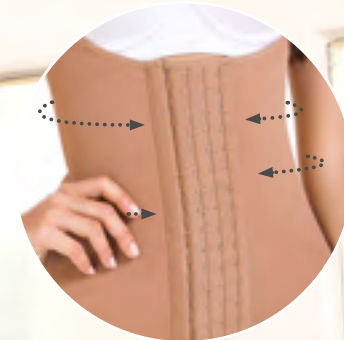
Colors: Moca ● Beige ○  
Size: XS to 3XL



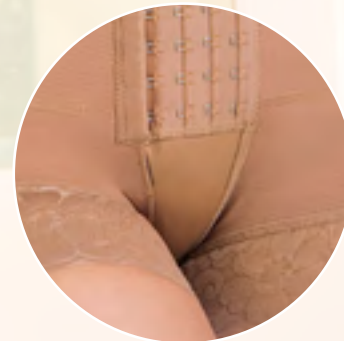
REF. 9434



Removable straps  
Cargaderas removibles



Abdomen, waist, back,  
and hip control  
Control de abdomen, cintura  
y cadera



Perineal opening  
Abertura perineal

Looks  
**AMAZING**  
Luce increíble



Back  
coverage  
Cubrimiento de  
espalda

Buttocks  
enhancement  
Realce de glúteos



Available up to **5XL**

- PQ** Post-surgical  
Second stage  
Postquirúrgica  
2da etapa
- UD** Daily use  
Uso Diario
- PP** Postpartum  
Postparto



**REF. 9334  
SHORT GIRDLE IN  
POWERNET**

Covered in cotton, with 4 levels of front adjustment.  
Recubierta en algodón, con 4 niveles de ajuste frontal.

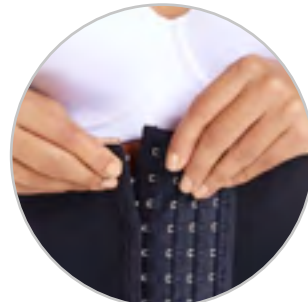
Control level | Tipo de control

- LOW Básico
- MEDIUM Medio
- HIGH Fuerte
- VERY HIGH Máximo**

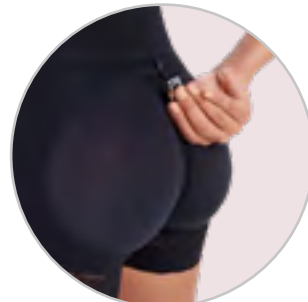
Colors: Beige ● Black ● Moca ●  
Size: XS to 5XL



**Removable straps**  
Cargaderas removibles



**Front adjustment**  
Ajuste frontal



**Perineal opening with panty**  
Abertura perineal con panty

Abdomen, waist, back and hip control

Control de abdomen, cintura y espalda

Buttocks enhancement  
Realce de glúteos



**Hip enhancement**  
Realce de glúteos

- UD** Daily use  
Uso Diario
- PP** Postpartum  
Postparto



**REF. 9632  
SHORT GIRDLE IN POWERNET**

Covered in cotton. straight back, with removable loaders, perineal opening with panty.

Recubierta en algodón. Espalda recta, con cargaderas removibles, abertura perineal con panty.

Control level | Tipo de control

- LOW Básico
- MEDIUM Medio
- HIGH Fuerte
- VERY HIGH Máximo**

Colors: Beige ● Negro ●  
Size: XS to 3XL



Abdomen, waist, back, and hip control

Control de abdomen, cintura y espalda





MID-THIGH & SHORT TYPE  
*girdles*

- PQ** Post-surgical  
Second stage  
Postquirúrgica  
2da etapa
- UD** Daily use  
Uso Diario
- PP** Postpartum  
Postparto



**REF. FQ108**  
**SHORT TYPE GIRDLE IN**  
**POWERNET**

Covered with cold touch Nylon. 1 level of adjustment in the bra, covered back and armhole sleeve, Lateral closure with internal snaps, double abdominal reinforcement

Recubierta en Nylon de tacto frío. brasier cubierta, espalda cubierta y manga sisa. Cierre lateral con broches internos y doble refuerzo abdominal.

Control level | Tipo de control

LOW Básico	MEDIUM Medio	<b>HIGH</b> Fuerte	VERY HIGH Máximo
---------------	-----------------	-----------------------	---------------------

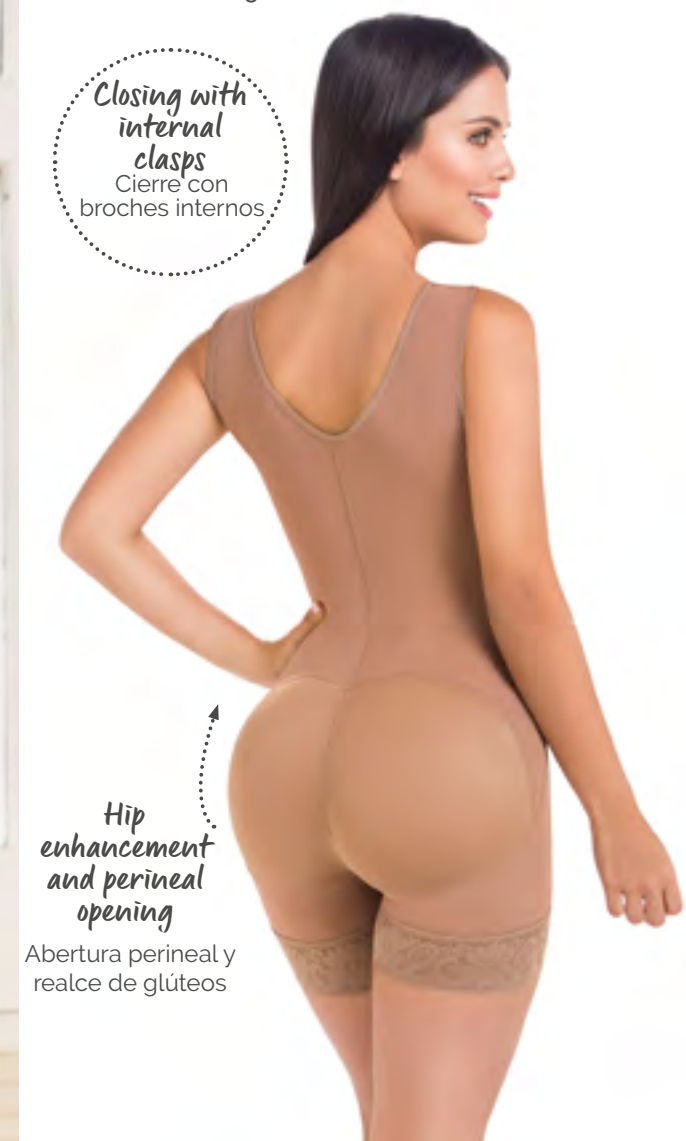
Colors: Moca ●  
Size: XS to 3XL



Abdomen, waist,  
hip, bust, and  
back control

Control de  
abdomen, cintura  
y espalda

Closing with  
internal  
clasps  
Cierre con  
broches internos



Hip  
enhancement  
and perineal  
opening

Abertura perineal y  
realce de glúteos



**UD** Daily use  
Uso Diario

Colors: Black ●  
Beige ○ Moca ●  
Size: XS to 3XL

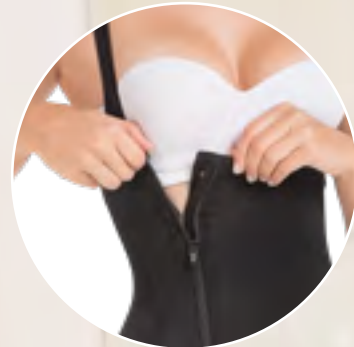
**REF. FU111**  
**SHORT GIRDLE IN TRICONET**

Armhole sleeve design with 3 levels of adjustment on shoulders, Perineal opening with closure, and hip enhancement.

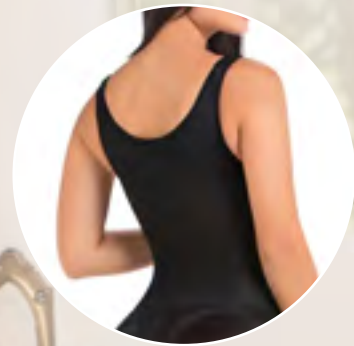
Diseño en manga sisa con 3 niveles de ajuste en hombros, abertura perineal con cierre.

Control level | Tipo de control

<b>LOW</b> Básico	<b>MEDIUM</b> Medio	<b>HIGH</b> Fuerte	<b>VERY HIGH</b> Máximo
----------------------	------------------------	-----------------------	----------------------------



Lateral closure -  
Internal snaps  
Cierre lateral  
Broches internos



Back coverage  
Alto cubrimiento



Buttocks  
enhancement  
Realce de cadera

Abdomen, waist,  
back and hip  
control

Control de  
abdomen,  
cintura,  
cadera  
y espalda



**PQ** Post-surgical  
Second stage  
Postquirúrgica  
2da etapa

**UD** Daily use  
Uso Diario

**PP** Postpartum  
Postparto



**REF. FQ100**  
**MID-THIGH GIRDLE IN  
POWERNET**

Covered in cold touch Nylon.  
4 levels of front adjustment,  
adjustable loaders and greater  
coverage on backs.

Recubierta en Nylon de tacto frío. 4 niveles de ajuste frontal, cargaderas graduables y mayor cobertura en espalda.

Control level | Tipo de control

<b>LOW</b> Básico	<b>MEDIUM</b> Medio	<b>HIGH</b> Fuerte	<b>VERY HIGH</b> Máximo
----------------------	------------------------	-----------------------	----------------------------

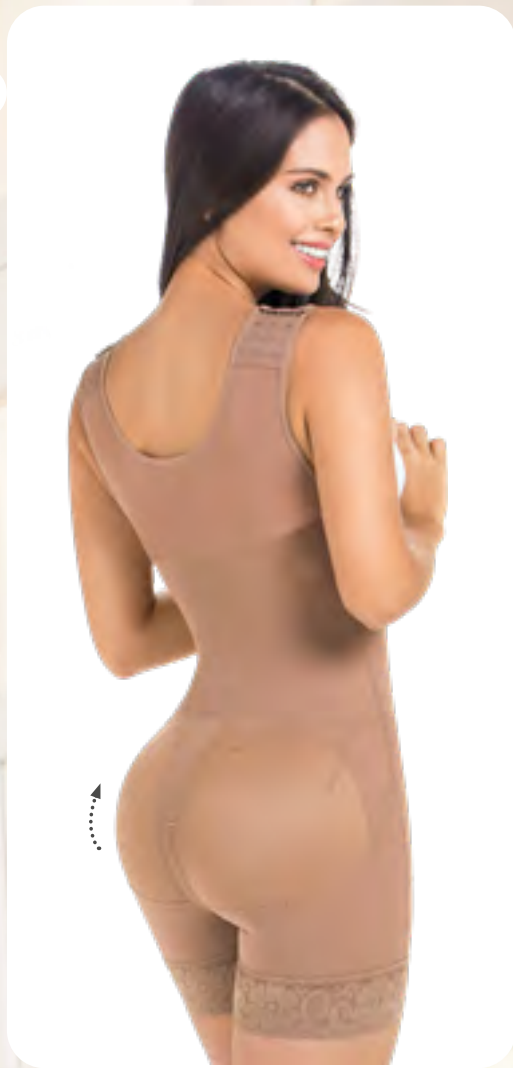
Colors: Moca ● Beige ○ Black ●  
Size: XS to 3XL

Abdomen, waist,  
back and hip  
control

Control de  
abdomen,  
cintura,  
cadera  
y espalda

Buttocks  
enhancement  
and perineal  
opening

Abertura perineal y realce de glúteos



**Buttocks enhancement**  
Realce de glúteos

**PQ** Post-surgical  
Second stage  
Postquirúrgica  
2da etapa

**UD** Daily use  
Uso Diario

**PP** Postpartum  
Postparto



**REF. FQ105  
SHORT TYPE GIRDLE IN POWERNET**

Covered in cold touch Nylon. Armhole sleeve with back coverage, perineal closure and 2 levels of front adjustment.  
Recubierta en Nylon de tacto frío. Manga sisa con cubrimiento en espalda, cierre perineal y 2 niveles de ajuste frontal.

Control level | Tipo de control

LOW Básico    MEDIUM Medio    **HIGH Fuerte**    VERY HIGH Máximo

Colors: Black ● Moca ● Beige ○ Cocoa ○  
Size: XS to 3XL



**Abdomen and waist control**  
Control de abdomen y cintura



**2 positions clasp on shoulder**  
2 niveles de ajuste en hombros



**Buttock enhancement, perineal opening with panty**  
Mayor realce de glúteos, abertura perineal con panty



**Abdomen, waist, back, legs, and hip control**  
Control de abdomen, cintura, cadera y piernas



**PQ** Post-surgical  
Second stage  
Postquirúrgica  
2da etapa

**UD** Daily use  
Uso Diario

**PP** Postpartum  
Postparto



**REF. 9412  
MID THIGH GIRDLE IN POWERNET**

Covered in cotton, with 4 levels of front adjustment.  
Recubierta en algodón, diseño en manga sisa con cubrimiento de espalda.

Control level | Tipo de control

LOW Básico    MEDIUM Medio    HIGH Fuerte    **VERY HIGH Máximo**

Colors: Beige ○ Black ●  
Size: XS to 3XL

# Define your figure

Define tu figura

**PQ** Post-surgical  
Second stage  
Postquirúrgica  
2da etapa

**UD** Daily use  
Uso Diario

**PP** Postpartum  
Postparto



**REF. 9182  
MID THIGH GIRDLE IN  
POWERNET**

Covered with cotton, loaders  
with removable pads.  
Recubierta en algodón, con  
cargaderas removibles.

Control leves | Tipos de control

LOW Básico   MEDIUM Medio   HIGH Fuerte   **VERY HIGH Máximo**

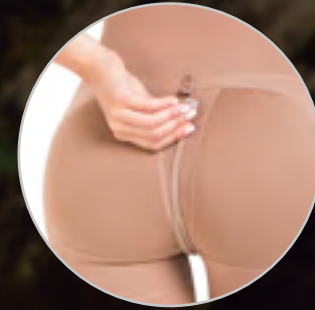
Colors: Beige ● Black ○ Moca ●  
Size: XS to 5XL



REF. 9182



Buttocks  
enhancement  
Realce de glúteos



Perineal opening  
with panty  
Abertura perineal con panty



Removable pads  
Almohadillas removibles



4 front  
adjustment levels  
4 niveles de ajuste

Available  
up to

**5XL**



Abdomen,  
waist, back,  
legs, and hip  
control

# Capri girdles



2 positions clasp on shoulder

2 niveles de ajuste en hombros

Abdomen, waist, back, legs, and hip control

Control de abdomen, cintura, cadera y piernas

**PQ** Post-surgical  
Second stage  
Postquirúrgica  
2da etapa

**UD** Daily use  
Uso Diario

**PP** Postpartum  
Postparto



**REF. 9382**  
**CAPRI GIRDLE IN POWERNET**

Covered in cotton, with 4 levels of front adjustment. Recubierta en algodón, diseño en manga sisa con cubrimiento de espalda. 4 niveles de ajuste frontal.

Control level | Tipo de control

LOW Básico    MEDIUM Medio    HIGH Fuerte    **VERY HIGH Máximo**

Colors: Beige ○  
Size: XS to 3XL



More enhancement  
Mayor realce de glúteos

Perineal opening with panty  
Abertura perineal con panty



Available up to **5XL**

Abdomen, waist, back, legs, and hip control

Control de abdomen, cintura, espalda, cadera y piernas

More enhancement  
Más realce



**PQ** Post-surgical  
Second stage  
Postquirúrgica  
2da etapa

**UD** Daily use  
Uso Diario

**PP** Postpartum  
Postparto



**REF. 9152**  
**CAPRI GIRDLE IN POWERNET**  
Covered in cotton, with back covering, perineal opening with panty. Removable pads  
Recubierta en algodón, con cubrimiento de espalda, abertura perineal con panty. Cargaderas con almohadillas removibles.

Control level | Tipo de control

LOW Básico   MEDIUM Medio   HIGH Fuerte   **VERY HIGH Máximo**

Colors: Beige ○ Black ● Moca ●  
Size: XS to 5XL



**PQ** Post-surgical  
Second stage  
Postquirúrgica  
2da etapa

**UD** Daily use  
Uso Diario

**PP** Postpartum  
Postparto

Certificados por INVIMA  
Decree 4725 de 2015

**REF. 9282**  
**CAPRI GIRDLE IN POWERNET**  
Covered in cold touch Nylon. Perineal opening.  
Recubierta en Nylon de tacto frío. Abertura perineal.

Control level | Tipo de control

LOW Básico   MEDIUM Medio   **HIGH Fuerte**   VERY HIGH Máximo

Colors: Moca ●  
Size: XS to 3XL

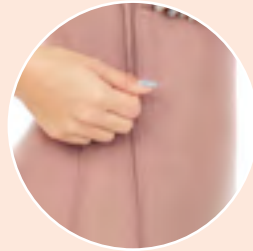
Abdomen, waist, back, hip and leg control

Control de abdomen, cintura, espalda, cadera y pierna

Buttocks enhancement  
Realce de glúteos



**Includes bra with snaps**  
 Incluye brasier con broches



**Lateral zipper with internal snaps**  
 Cierre lateral con broches internos

**Abdomen, waist, back, hip and leg control**  
 Control de abdomen, cintura, espalda, cadera y pierna

**Buttocks enhancement**  
 Realce de glúteos



**PQ** Post-surgical  
 Second stage  
 Postquirúrgica  
 2da etapa

**UD** Daily use  
 Uso Diario



**REF. 9292  
 CAPRI GIRDLE IN POWERNET**

Covered in cold touch Nylon.  
 Perineal opening.  
 Recubierta en Nylon de tacto frío.  
 Abertura perineal.

Control level | Tipo de control

LOW Básico    MEDIUM Medio    **HIGH Fuerte**    VERY HIGH Máximo

Colors: Beige ● Cocoa ●  
 Size: XS to 3XL



**PQ** Post-surgical  
 First stage  
 Postquirúrgica  
 1ra etapa

**UD** Daily use  
 Uso Diario

**PP** Postparto  
 Postpartum



**REF. 9562  
 CAPRI GIRDLE IN POWERNET**

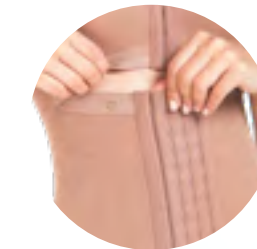
Covered in cold touch Nylon.  
 Abdomen, waist, back, hip, and leg control.

Recubierta en Nylon de tacto frío con control de abdomen, cintura, espalda, cadera y piernas.

Control level | Tipo de control

LOW Básico    MEDIUM Medio    **HIGH Fuerte**    VERY HIGH Máximo

Colors: Negro ○ Moca ●  
 Size: XS to 3XL



**4 front adjustment levels**  
 4 niveles de ajuste frontal



**Buttocks enhancement**  
 Realce de glúteos



Loaders with removable pads  
Cargaderas con almohadillas removibles

Abdomen, waist, back, hip, and leg control

Control de abdomen, cintura, espalda, cadera y piernas

**PQ** Post-surgical First stage  
Postquirúrgica 1ra etapa

**UD** Daily use  
Uso Diario



**REF. 9702 CAPRI GIRDLE IN TRICONET**

Covered with cotton. 2 front adjustment levels.  
Recubierta en algodón. 2 niveles de ajuste frontal.

Control level | Tipo de control

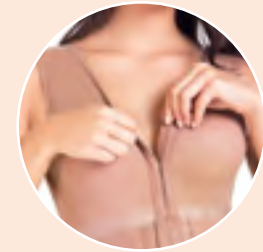
LOW Básico	<b>MEDIUM Medio</b>	HIGH Fuerte	VERY HIGH Máximo
------------	---------------------	-------------	------------------

Colors: Beige   
Size: XS to 3XL

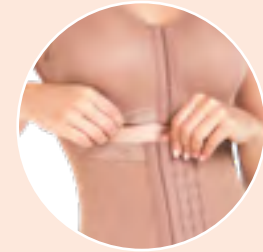


Greater buttocks enhancement  
Mayor realce de glúteos

Perineal closure



Includes bra with snaps  
Incluye brasier con broches



4 front adjustment levels  
4 niveles de ajuste frontal

Abdomen, waist, back, hip and leg control  
Control de abdomen, cintura, espalda, cadera y pierna

Buttocks enhancement  
Realce de glúteos

Available up to  
**5XL**

**PQ** Post-surgical Second stage  
Postquirúrgica 2da etapa

**UD** Daily use  
Uso Diario



**REF. 9262 CAPRI GIRDLE IN POWERNET**

Covered in cold touch Nylon.  
Perineal opening.  
Recubierta en Nylon de tacto frío.  
Abertura perineal.

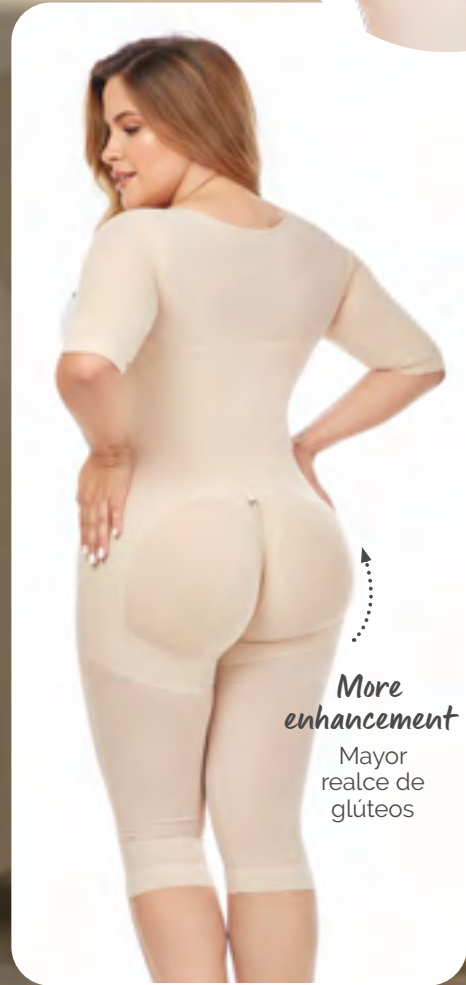
Control level | Tipo de control

LOW Básico	MEDIUM Medio	<b>HIGH Fuerte</b>	VERY HIGH Máximo
------------	--------------	--------------------	------------------

Colors: Moca  Beige  Black   
Size: XS to 5XL



**Bust flap**  
Cargadera  
removible en busto



**More enhancement**  
Mayor realce de glúteos



Abdomen,  
waist, back,  
legs, arm, and  
hip control

Control de abdomen,  
cintura, espalda,  
cadera, piernas y  
brazos

Available  
up to

**5XL**

**PQ** Post-surgical  
Second stage  
Postquirúrgica  
2da etapa

**UD** Daily use  
Uso Diario

Colors: Beige ○  
Black ●  
Size: XS to 5XL



**REF. 9142  
CAPRI GIRDLE IN POWERNET**

Covered in cotton, design with sleeves and high coverage in the back. Perineal opening with panty and 4 front adjustments levels. Recubierta en algodón, diseño con mangas y alto cubrimiento en espalda. Abertura perineal con panty y 4 niveles de ajuste frontal.

Control level | Tipo de control

LOW Básico   MEDIUM Medio   HIGH Fuerte   **VERY HIGH Máximo**

**PQ** Post-surgical  
First stage  
Postquirúrgica  
1ra etapa

**UD** Daily use  
Uso Diario

**PP** Postparto  
Postpartum



**REF. 9312  
CAPRI GIRDLE IN TRICONET**

Covered with cotton. Abdomen, waist, back, hip, and leg control. Loaders with removable pads. Recubierta de algodón con cargaderas de almohadillas removibles. Control de abdomen, cintura, espalda, cadera y piernas.

Control level | Tipo de control

LOW Básico   **MEDIUM Medio**   HIGH Fuerte   VERY HIGH Máximo

Colors: Beige ○  
Size: XS to 5XL

Available  
up to

**5XL**



Removable extension  
of 4 clasps, plus a  
fixed clasps level.

Extensión removible de 4  
niveles de broches, más  
un nivel de broche fijo



Greater buttocks  
enhancement  
Mayor realce de  
glúteos

Perineal  
opening with  
panty  
Abertura perineal  
con panty

**PQ** Postsurgical Postquirúrgica

**REF. 9010-4 POWERNET CHIN SUPPORT**  
Cotton covered.  
Mentonera recubierta en algodón.



Control level | Tipo de control  

LOW Básico	MEDIUM Medio	HIGH Fuerte	VERY HIGH Máximo
------------	--------------	-------------	------------------

Color: Beige ○ Moca ●  
Size: XS to 3XL

*Provides relief after surgery and reduces swelling*  
Brinda alivio después de la cirugía y disminuye la inflamación



*Chin and cheeks control*  
Control de mentón y mejillas

**PQ** Postsurgical Postquirúrgica

**REF. 9000 ADJUSTABLE BAND IN POWERNET**

Recubierta en algodón. Brinda mayor soporte al busto después de la cirugía

Color: Beige ○ Black ●  
Size: XS to 3XL

*Velcro ends to adjust to the silhouette*  
Velcro que permite ajustar a la medida



*Adjustable Straps*  
Tiras ajustables

*Comfortable arm control*  
Controla con comodidad los brazos

**PQ** Postsurgical Postquirúrgica

**REF. 9012 POWERNET SLEEVES**  
Covered in cotton.

Mangas recubiertas en algodón.

Control level | Tipo de control

LOW Básico	MEDIUM Medio	HIGH Fuerte	VERY HIGH Máximo
------------	--------------	-------------	------------------

Color: Beige ○  
Size: XS to 3XL

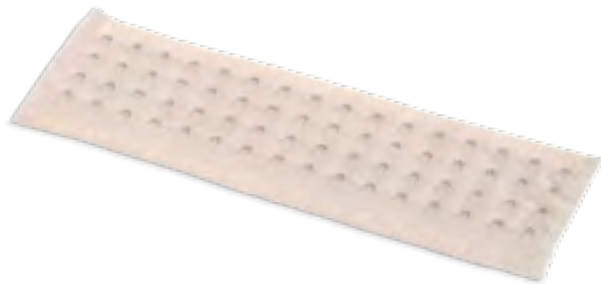


**PQ** Postsurgical Postquirúrgica

**REF. 9008-1 EXTENSION COTTON SNAPS**

Color: Beige ○  
Black ● Moca ●  
Size: XS to 3XL

Helps to increase 4 additional sizes in the girdle.  
Aumenta 4 tallas adicionales en la faja.



**PQ** Postsurgical Postquirúrgica

**REF. 9011P SMALL RIGID BOARD**

With internal foam covered in cotton.  
Con espuma interna recubierta en algodón.

Colors: Beige ○  
Size: 21 cm x 23 cm



# ABDOMINAL Boards

TABLAS ABDOMINALES

**Abdominal boards are used between the girdle and the body, helping the abdomen stay flatter after surgical and aesthetic procedures.**

Las tablas abdominales se usan entre la faja y el cuerpo, ayudando a que el abdomen permanezca más plano después de procedimientos quirúrgicos y estéticos.

*Absorbs moisture, preventing infections*

Absorbe la humedad, evitando infecciones



**PQ** Postsurgical Postquirúrgica

Colors: Beige ○  
Size: 31,5 cm x 23 cm

**REF. TQ100 ABDOMINAL BOARD**

Flexible board with foam, lined in cold touch Nylon. Helps reduce inflammation, binds skin to muscle. Corrige la postura.

Tabla flexible con espumilla, forrada en Nylon de tacto frío. Ayuda a desinflamar, adhiere la piel al musculo, correct posture.

**PQ** Postsurgical Postquirúrgica

**REF. TQ101 SMALL FLEXIBLE BOARD**

Covered in cotton.  
Recubierta en algodón.

Colors: Beige ○  
Size: 21 cm x 23 cm



*Wear it rigid or flexible*  
*Flatter abdomen - more comfort.*

Llévala rígida o flexible, abdomen más plano y más cómodo

# Shorts

**UD** Daily use  
Uso Diario

**REF. 9469  
BUTTOCK LIFTING  
PANTS IN POWERNET**

Covered in cotton, with lower abdomen control and buttock lift  
Recubierto en algodón, con control de abdomen bajo y levanta cola.

Control level | Tipo de control

LOW Básico MEDIUM Medio HIGH Fuerte **VERY HIGH Máximo**

Colors: Beige ○ Black ●  
Size: XS to 3XL



**Hip enhancement**  
Realce de glúteos

**Low abdominal control**  
Control de abdomen bajo

**UD** Daily use  
Uso Diario

**REF. FU100  
BUTTOCK LIFTING PANTS  
IN TRICONET**

Covered with cold touch nylon. Elastic waist with front and back rods.  
Recubierto con Nylon de tacto frío. Elástico en cintura con varillas en delantero y posterior.

Control level | Tipo de control

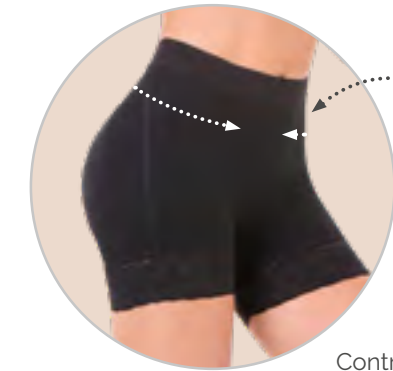
LOW Básico **MEDIUM Medio** HIGH Fuerte VERY HIGH Máximo

Colors: Beige ○ Black ● Moca ●  
Size: XS to 3XL



**Hip enhancement**  
Realce de glúteos

**Elastic waistband**  
Elástico en cintura



**Rods**  
Varillas

**Low abdominal control**  
Control de abdomen bajo



**Rods**  
Varillas

**Hip enhancement**  
Realce de glúteos

**UD** Daily use  
Uso Diario

**REF. 9549  
HIGH WAISTED SHORTS  
IN POWERNET**

Covered in cotton. Elastic waist with front and back rods, to prevent the garment from rolling up.  
Recubierto en algodón. Elástico en cintura con varillas en delantero y posterior, para evitar que la prenda se enrolle.

Control level | Tipo de control

LOW Básico MEDIUM Medio **HIGH Fuerte** VERY HIGH Máximo

Color: Beige ○ Black ●  
Size: XS to 3XL

**Double abdomen reinforcement**  
Doble refuerzo en abdomen

**Tummy control**  
Mayor control de abdomen

**UD** Daily use  
Uso Diario

**REF. FU101  
SHORT IN POWERNET**

Covered in cotton. Elastic waistband with front and back stays.  
Recubierto en algodón. Elástico en cintura con varillas en delantero y posterior.

Control level | Tipo de control

LOW Básico MEDIUM Medio **HIGH Fuerte** VERY HIGH Máximo

Colors: Beige ○ Black ● Moca ●  
Size: XS to 3XL



**Elastic waistband**  
Elástico en cintura

**Hip enhancement**  
Realce de glúteos

**Underwires**  
Varillas

**Low tummy control**  
Control de abdomen bajo

**UD** Daily use  
Uso Diario

**REF. 9279 BUTTOCK LIFTING SHORT IN POWERNET**  
Covered in cotton, with buttock lift  
Recubierto en algodón y levanta cola.

Control level | Tipo de control

LOW Básico	<b>MEDIUM Medio</b>	HIGH Fuerte	VERY HIGH Máximo
------------	---------------------	-------------	------------------

Colors: Beige ○  
Size: XS to 3XL

*Hip enhancement*  
Realce de glúteos

**PQ** Post-surgical First stage  
Postquirúrgica 1ra etapa

**UD** Daily use  
Uso Diario

Certificados por **INVIMA**  
Decreto 4725 de 2005

**REF. FQ109 BRA IN NYLON LYCRA**

Control level | Tipo de control

LOW Básico	<b>MEDIUM Medio</b>	HIGH Fuerte	VERY HIGH Máximo
------------	---------------------	-------------	------------------

Colors: Moca ●  
Size: XS to 3XL

*Pre-shaped cup*  
Copas prehormadas

*Sleeve 3/4*  
Manga 3/4

*Posture correct in powernet*  
Corrector de postura en Powernet

*2 position front clasp*  
Broches delanteros de 2 posiciones

**PQ** Post-surgical First stage  
Postquirúrgica 1ra etapa

**UD** Daily use  
Uso Diario

Certificados por **INVIMA**  
Decreto 4725 de 2005

*High back*  
Espalda alta

*2 levels of front adjustment*  
2 niveles de ajuste frontal

*Pre-shaped cup that allows a greater coverage of the bust and gives a natural rounding*  
Copa prehormada que permite un mayor cubrimiento del busto y da un redondeo natural

**REF. 9304 COTTON BRA**  
Brasier en algodón

Control level | Tipo de control

<b>LOW Básico</b>	MEDIUM Medio	HIGH Fuerte	VERY HIGH Máximo
-------------------	--------------	-------------	------------------

Colors: Beige ○ Black ●  
Moca ●  
Size: XS to 2XL

*2 positions clasp on shoulder*  
2 niveles de ajuste en hombro

**UD** Daily use  
Uso Diario

Colors: Beige ○  
Size: XS to 2XL

**REF. 9184 POWERNET BRA**  
Strapless type. Bust enhancement with cup, removable straps. 2 adjustment levels on the back.  
Tipo strapless. Realce de busto con copa, cargaderas removibles.

Control level | Tipo de control

<b>LOW Básico</b>	MEDIUM Medio	HIGH Fuerte	VERY HIGH Máximo
-------------------	--------------	-------------	------------------

*Bust enhancement with cup*  
Realce de busto con copa

*2 position clasp*  
2 niveles de ajuste en la espalda.

# Shape you waist

Moldea tu cintura



Back coverage  
Cubrimiento de espalda

Abdomen and waist control

Control de abdomen y cintura



**REF. 9037  
POWERNET WAISTCOAT**

Covered in cotton. 7 roads for better molding.  
Recubierta en algodón, 7 varillas para mejor moldeo.

Control level | Tipo de control

LOW Básico	MEDIUM Medio	HIGH Fuerte	VERY HIGH Máximo
---------------	-----------------	----------------	---------------------

Colors: Beige   
Size: XS to 2XL

## TABLE OF Measurements

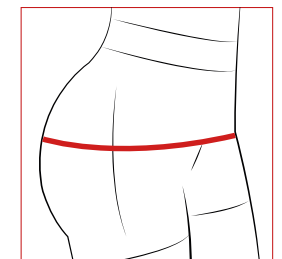
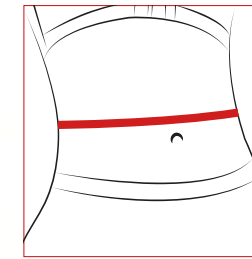
Tabla de medidas

**SELECT YOUR SIZE**  
selecciona tu talla adecuada



**A** Measure your waist circumference just above your navel.  
Mide el contorno de tu cintura justo encima de tu ombligo

**B** Measure your hip circumference, at the most protruding part.  
Mide el contorno de tu cadera, por la parte más sobresaliente.




Talla size	Cadera cm	Hips in	Cintura cm	Waist in
XS	66 - 73	26" - 28"	50 - 55	20" - 21"
S	83 - 87	29" - 31"	56 - 60	22" - 23"
M	88 - 95	32" - 34"	61 - 64	24" - 25"
L	96 - 100	35" - 37"	65 - 69	26" - 27"
XL	101 - 105	38" - 39"	70 - 74	28" - 29"
2XL	106 - 113	40" - 41"	75 - 79	30" - 31"
3XL	114 - 117	42" - 43"	80 - 83	32" - 33"

Height| 5'-5'6"    Altura| 150-169cm    Height| 5'7"-6"    Altura| 170-183cm

Talla size	Weight lb	Peso kg	Weight lb	Peso kg
XS	83 - 93	40 - 42	94 - 104	43 - 46
S	94 - 104	43 - 46	105 - 115	47 - 52
M	105 - 115	47 - 52	116 - 130	53 - 59
L	116 - 130	53 - 59	131 - 150	60 - 68
XL	131 - 150	60 - 68	151 - 170	69 - 77
2XL	151 - 170	69 - 77	171 - 190	78 - 86
3XL	171 - 190	78 - 86	191 - 210	87 - 95


If you are between two sizes, choose the upper one. Increase the use of the garment gradually to get used to it. /Si estás entre dos tallas, elige la superior. Incrementa el uso de la prenda gradualmente para que te acostumbres a ella.

**1**



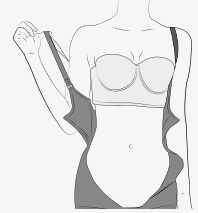
Insert your feet into the girdle and make sure that the side seams are located on the sides of your legs.  
Introduce los pies en la faja y verifica que las costuras de los lados queden ubicadas en los laterales de las piernas.

**2**



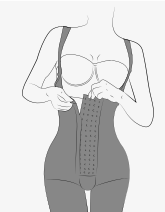
Pull the girdle up, fitting it snugly around your hips.  
Sube la faja acomodándola bien en la cadera.

**3**




Put on both straps and adjust them to your measurements.  
Pon ambas cargaderas y adapталas a tu medida

**4**




Close your girdle from the bottom up.  
Cierra tu faja de abajo hacia arriba

**5**



If you want to use an additional panty, you must use it outside the girdle.  
Si deseas usar un panty adicional debes usarlo por fuera de la faja.

**6**



If your girdle has a panty, pull it back to fasten at the hips.  
Si tu faja tiene panty, halalo hacia atrás para abrochar en la parte de la cadera

## Recommendations · Recomendaciones

### FOR USE OF THE GIRDLE DE USO DE LAS FAJAS

Use it for a maximum of 2 hours in the first position, and gradually increase the time. / Usarla máximo durante 2 horas en la primera postura, aumentar el tiempo gradualmente.

Define the size to be used, according to the measurement chart or pant size. / Definir la talla a usar según cuadro de medidas o talla de pantalón.

It is recommended to have 2 girdles for changing and washing. / Se recomienda tener 2 prendas para el cambio y lavado.

Do not use latex girdles for post-surgical treatment. / No utilizar fajas de látex para tratamiento post quirúrgico.

Do not use latex girdles for long periods of time. / No usar fajas de látex por largos periodos de tiempo.

Discontinue use in case of an allergic reaction and consult your doctor. / Suspender su uso en caso de una reacción alérgica y consultar con su médico.

You must have your body dry and free of oils before wearing it. / Debes tener el cuerpo seco y sin aceites.

Avoid wearing rings and bracelets when putting it on. Evite usar anillos y pulseras en el momento de ponerla.

It should be slid from bottom to top. Pull firmly with your fingertips. Debe ser deslizada de abajo hacia arriba. Halar firmemente con la yema de los dedos.

### WASHING DEL LAVADO

Hand wash for longer garment life. / Lavar a mano para mayor duración de la prenda.

Use cold water to preserve the fibers of the garment. / Usar agua fría para conservar más las fibras de la prenda.

In case of using a washing machine, use the delicate cycle. / En caso de usar lavadora hacerlo en ciclo de lavado delicado.

Do not twist the garment, dry it first with a towel to absorb excess water, and let it dry in the shade. / No mezclar con toallas, pantalones, jeans y telas pesadas.

Use mild soap without bleach. / Usar jabón suave sin blanqueador.

Do not dry clean, do not iron. / No lavar en seco no planchar.

Do not twist the garment, dry it before with a towel to absorb excess water and put to dry in the shade. / No retorcer la prenda, secala antes con una toalla para que absorba el exceso de agua y poner a secar a la sombra.



No usar secadora



Lavar a mano



No retorcer



No usar plancha



No usar cloro



Lavar con agua fría

# INDEX

## Girdles

### CHOCOLATE ASH AND COCOA

FQ110	PAG. 7
FQ113	PAG. 8-9
FQ112	PAG. 10
FQ115	PAG. 11
FQ111	PAG. 12
FQ114	PAG. 13
FQ113	PAG. 15
FQ110	PAG. 16-17
FQ115	PAG. 18
FQ112	PAG. 19
FQ111	PAG. 20
FQ114	PAG. 21
FQ102	PAG. 22-23

### HOURLASS

RA001	PAG. 26
RA002	PAG. 27
RA004	PAG. 28
RA003	PAG. 29
RA005	PAG. 30
9277	PAG. 31
FC302	PAG. 32
FC304	PAG. 33

## Basics

### SHORTS

9469	PAG. 68
9549	PAG. 68
FU100	PAG. 69
FU101	PAG. 69
FU101	PAG. 69
9279	PAG. 70

### SHORT GIRDLES

FL101	PAG. 35
9415	PAG. 36
9143	PAG. 37
FU112	PAG. 38
9531	PAG. 39
9831	PAG. 40
9235	PAG. 41
9633	PAG. 42
FP100	PAG. 43
9434	PAG. 44-45
9334	PAG. 46
9632	PAG. 47

### MID THIGH GIRDLE

FQ108	PAG. 49
FU111	PAG. 50
FQ100	PAG. 51
FQ105	PAG. 52
9412	PAG. 53
9182	PAG. 54-55

### BRA

9304	PAG. 70
FQ109	PAG. 71
9148	PAG. 71

### CAPRI WIRDLES

9382	PAG. 57
9152	PAG. 58
9282	PAG. 59
9292	PAG. 60
9562	PAG. 61
9702	PAG. 62
9262	PAG. 63
9142	PAG. 64
9312	PAG. 65

## Accesories

### POSTSURGICAL

9010-4	PAG. 66
9012	PAG. 66
9000	PAG. 66
9008-1	PAG. 66
TQ100	PAG. 67
9011P	PAG. 67
TQ101	PAG. 67

### WAISTCOATS

9037	PAG. 72
------	---------

MariaE<sup>®</sup>

• F A J A S •

La piel de tu belleza



[www.fajasmariae.com](http://www.fajasmariae.com)