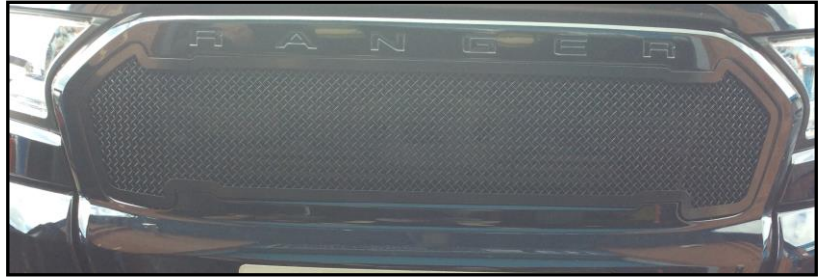


Ford Ranger 2016MY 4x4 Upper Grille

Kit Contents: -

- 1 off Centre Grille
- 2 off No 4 x 60 Pins
- 2 off Retaining Brackets
- 4 off 3/4" Screws

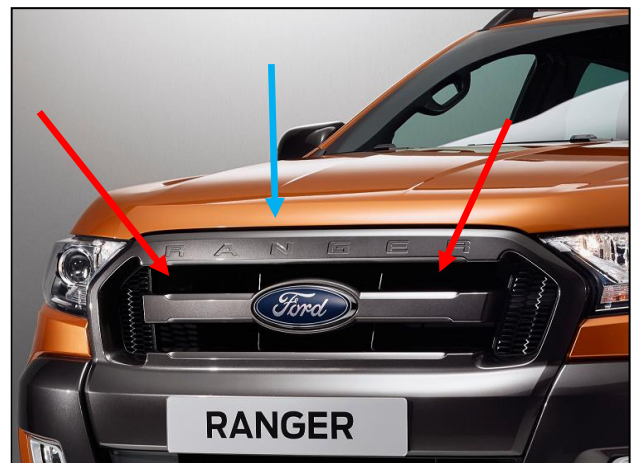
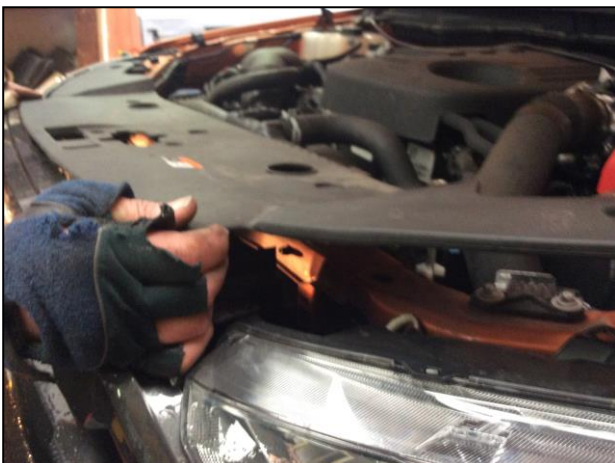


Tools Required: -

- Torx Bit
- Screwdriver

Upper Mesh Grille Fitting Instructions

1. Remove plastic front cover located on bonnet (fig 1).
2. Remove the inner casing and centre moulding as per the arrows (red) making sure you leave the outer casing in place (blue arrow) (fig 2, 3 and 4).



3. Your grille should now look like this.



4. Guide the grille carefully into the aperture as shown in Fig 1.
5. Insert the 4x60 pin into the right-hand diamond on the mesh as shown in Fig 2.
6. Behind the grille, attach the retaining bracket to the screw and screw into place as shown in Fig 3.
7. Screw the 4 3/4" screws through the grille, into the aperture as shown in Fig 4.
8. Your grilles are now complete.

