

the WRAP UP

April 2022
Issue Twenty-Seven

PEEK INSIDE THIS ISSUE:

Cover Story: EWPT Show

Tips from Tony.

Featured Products.

Industry News article feature.

Featured Products continued.

Customer Favorites.

Important News.

Coming Soon..

Behind the Scenes.

Upcoming Events and Tradeshow.

PAGE ONE

PAGE TWO

PAGE THREE

COVER STORY

EWPT 2022

Way back in 2019, before the pandemic and the word Covid was a common household virus, we signed up for EWPT. EWPT was new for us as a growing company. The first local tradeshow we would exhibit. An exciting time to learn and grow our customers. The show is in May each year. At the end of 2019, we managed to fit RSNA into our calendar. We know what happened in March of 2020. It felt like time stood still. As places started opening, we fit HIMSS into our calendar. Fast forward to the present year, 2022, and EWPT is finally on the horizon. In May, we finally get to exhibit at EWPT.

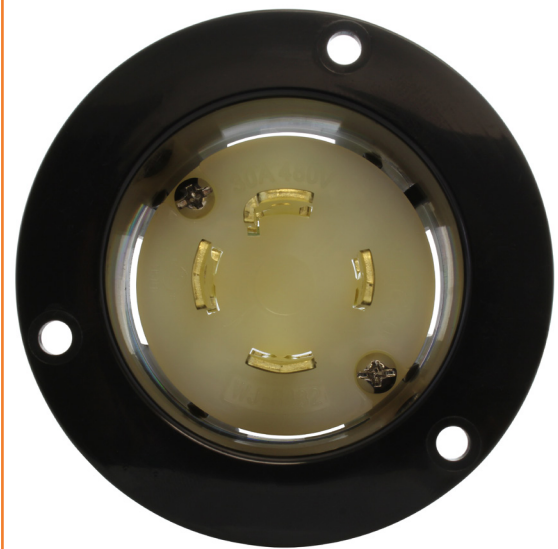
We have exhibited in RSNA and HIMSS with medical power solutions, but EWPT is different. The Electrical Wire Processing Technology Expo. According to their website, "The Electrical Wire Processing Technology Expo is one of the leading shows of its kind for the electrical wire and cable processing industries. 2019 saw an expanded roster of exhibitors and visitors with nearly 3,000 in attendance from 40 states and 25 countries. Major automotive manufacturers such as Ford, Fiat Chrysler, and General Motors, plus many notable international companies including Boeing, General Electric, Briggs & Stratton, and Harley-Davidson sent representatives to the two-day show to see the latest trends, technologies, and products shaping the future." We have a whole new set of opportunities at this show and are excited to finally see the day approaching.

Find us in booth 827 on the EWPT show floor. We can't wait to see you!

NEW PRODUCTS

ASINL1630P

This AC WORKS® brand inlet wiring device [ASINL1630P] is a heavy-duty power input connection device. This L16-30 inlet is used for an industrial and commercial grade flange inlet. This inlet works with a 10 or an 8 AWG (American Wire Gauge) or above, copper wire, and is commonly used for powering convention centers and large events.



TIPS FROM TONY

Voltage drop occurs when using an extension cord that is longer than 50 feet, becoming more significant when 100 feet or longer. Voltage drop can hinder charging speeds for electric vehicles, the amount of power from a generator to your inlet box or RV, and the efficiency of power tools. To combat this, we have made several heavy-duty and super-duty cords with thicker gauge wire than usual. These "overkill" cords are found on our site and begin with HD and SD.

 **ELECTRICAL
WIRE PROCESSING
TECHNOLOGY
EXPO 2022**

**WIRED &
INSPIRED**

FEATURED PRODUCTS

WDSS2650-018

A heavy-duty molded generator or shore power to welder adapter. The SS2-50P CS6365 is a 50 Amp, 125/250 Volt, 4-wire shore power plug. The NEMA 6-50R is a 50 Amp, 250 Volt female connector. The cable is a 1.5-foot STW, 6/3, heavy-duty 600 Volt outdoor jacket cord.



WD650PR

This AC WORKS® brand extension cord is a heavy-duty outdoor extension cord. This NEMA 6-50 EV/Welder extension cord has a 6-50 male plug and female connector. The cable is an STW, 8/3, 600 Volt anti-cold weather jacket allowing the cable to stay flexible in extreme temperatures, and a 40 Amp, 8 AWG copper wire. This super heavy-duty durable welder cord is generally used for EV charging.



CUSTOMER FAVORITES

WS-045-0-5WG

This AC WORKS® brand IT/server power strip [WS-045-0-5WG] is a heavy-duty high-quality product. It is an IEC IT, PDU, server power strip with a 7.5-inch housing IEC C14 power input inlet to (5) IEC C13 Sheet F outlets, also containing a ground wire. It is commonly used for IT/servers for power distribution units.



AC WORKS® NEWS

Mark Downs and Discounts

As you may remember we started creating new designs for the barrel adapters. As they have been rolling out into production we have been marking down the old style. Save on compact adapters by purchasing the old style (while supplies last).

Visit our website's promotional page to find out more about our discounts and coupons. We are running a BOGO discount on the E520CB520 and the E620CB620 flexible adapters.

We also post our discounts and sales on our Facebook page.


[@acworksconnectors on Facebook](#)



Safety Switch Y-Cable

We offer two EV Safety Switch Y-cables for your convenience. One is the NEMA 10-30 EVY1030SW-036 and the other is the NEMA 14-30 EVY1430SW-036. These products are so convenient because you can easily switch between one appliance and another. The y-cable is used in conjunction with any adapter that fits or by itself. It helps prevent overheating or the concern for tripping a breaker and saves money compared to similar products. Lastly, it is very heavy-duty and sturdy enough to use during camping with your RV.

These products are high quality and safe to use with high power appliances, vehicles, and RV's. They are much less expensive than other electronic automatic models. Many use this product to switch between their dryer and powering an RV or charging an EV at home. Sometimes guests bring their RV and park in a yard or driveway and this option is very convenient. Other's switch between charging an EV and powering their RV at the campground. Many electronics malfunction over time, using the manual safety switch by AC WORKS® you avoid that problem.

SAFETY SWITCH Y-CABLE
Conveniently switch from your dryer to your electric vehicle charger.

Product Rating: 30 Amp 125/250 Volt 7500 Watt	Two foot cable from plug to switch, one foot cable from switch to connectors. The switch powers one of the outlets at a time and comes with four mounting holes.
--	---

Please make sure your equipment is in the power off position before you connect this switch cord.

- The Benefits of Using this Safety Switch Cord
- Avoid overloading your circuit, causing breaker tripping or fire
- Avoid frequently having to plug and unplug different equipment
- Safe and easy switch
- Flexible and easy install in any location

ATTENTION: This device may be used for any location where the product has been installed, please take note of any instructions or download our user manual or review the user manual for detailed instructions.

Corntec Power Corp. | AC Connectors
Located in Wisconsin, USA
www.ACWORKS.com | 414-434-2220



www.ACWORKS.com

WRAP UP
the

BEHIND THE SCENES

We are always increasing our product offerings, improving products, and keep an open mind here at AC Connectors. We try to listen to customer requests and problems and respond by offering them any solution we have. When we don't have a solution, we like to try and create one for the inquiry.

If you are looking for a specific power solution and having difficulty finding it, please reach out. New ideas are welcome and encouraged. You can email us with any ideas.

info@acconnector.com
(414)434-2220 Call
(414)323-3240 Text

SOCIAL MEDIA

Social Media Channels

FACEBOOK

Follow AC WORKS® on Facebook and learn more about our products, find discounts and more. You can also leave us a review on Facebook to help other customers.

INSTAGRAM

View products behind the scenes, in development, and during special events.

TWITTER

Industry related news and updates, newsletters, and deals are shared here.

LINKEDIN

Hiring and company update events.

E-mail your questions to
info@acconnectors.com

UPCOMING SHOWS

Tradeshow, Expo, and Event News

EWPT 2022: Milwaukee, WI | May 10-12, 2022

The Wisconsin Center District and Expo Productions Inc. has announced the Electrical Wire Processing Technology Expo, **Find us in booth #827 this spring.**

HIMSS23: Chicago, IL | See you in Chicago.

We will see you at HIMSS23 in Chicago, Illinois. **We will see you next year in Chicago at the McCormick Place.**

FUN FACTS

How Important Is Welding?

Some people think you have to get a degree to land an important job. Others believe the trades are a lost art. We want to share with you the significance of welders in our world.

A "stack of dimes" is far more than just visually appealing beads of metal art. Some welds need to be so precise they contain liquids and gas. Finding a talented welder to perform a structurally sound weld and make it aesthetically pleasing at the same time can be difficult. Many of our highly trained welders are at retirement age and will leave the job market soon.

What is the future of welding? Welders are essential workers who contribute to the growth of manufacturing and the improvement of infrastructure. A welder's skillset will provide them job security. Training in the latest technologies and processes offers a competitive edge in the market.

The future of welding jobs is encouraging in cities across the U.S. Additionally, you should know your power source and the abilities of the technology you use. We can help you find power solutions for any power source available. Learning this keeps your jobs running smoothly.



IMPORTANT DATES TO REMEMBER

MAY

Cinco de Mayo May 5
Mother's Day May 8
Memorial Day May 30

JUNE

Father's Day 19
First Day of Summer 21
National Camping Month