

the WRAP UP

April 2024
Issue Fifty

PEEK INSIDE THIS ISSUE:

Cover Story: 50 Issues

Features

Featured Products

Tips From Tony

AC WORKS
News

Featured Products
continued

Customer
Favorites

Discounts

Industry
News

Behind the Scenes

Upcoming Events and
Tradeshows

PAGE ONE

PAGE TWO

PAGE THREE

COVER STORY

Fifty Issues of the WRAP UP Newsletter

FEATURED PRODUCTS

L1430PDU-10-AB

This PDU with cord features heavy-duty outlets and an anti-cold weather jacket, keeping the cord flexible in harsh temps. This extension cord has a NEMA L14-30P, 30 Amp, 125/250 Volt, locking plug to (4) GFCI NEMA 5-15/20R, 20 Amp, T-blade household female connectors. There is also one 24 Amp breaker per PDU box.

The GFCI outlets come with status indicator lights and the cable is an SOOW, 10 Gauge, 30A copper wire, with a 600V anti-cold weather jacket.

This cord is perfect for any indoor/outdoor events, fairs, conventions, construction sites, and more. Each box has a maximum operating power of 6000 Watts.



TIPS FROM TONY

The connections for CS configurations all have a universal size, but the case or body for the plug or connector can come in a variety of sizes. Our 50ARCV weather boot only fits our brand CS connections. It will not fit CS connections from other companies.



JOIN US TO
CELEBRATE

WRAP UP
NEWSLETTER

ISSUE FIFTY

APRIL 2024

Let Us Know What
You Want to See in the
Next Fifty Issues of the
WRAP UP Newsletter
by AC WORKS®

FEATURED PRODUCTS

S1450M50-RU

The detachable power supply cord comes in 50, 75, and 100ft lengths. It is a NEMA 14-50P to NEMA SS2-50R 50A cable.

The NEMA 14-50P is a 50 Amp, 125/250V male plug. The NEMA SS2-50R is a 50A, 125/250 Volt locking female connector. The cord is a SOOW, 6/4, heavy-duty, anti-cold weather cable staying flexible in extreme temperatures.

- NEMA 14-50P to NEMA SS2-50R
- NEMA 14-50P, 50 Amp, 125/250 Volt Male Plug
- NEMA SS2-50R, 50 Amp, 125/250 RV 50A Locking Female Connector



CUSTOMER FAVORITES

EVTT30MS

This electric vehicle adapter [EVTT30MS] is very durable with a compact design. The adapter is a TT-30P to a NEMA 14-50R. The TT-30P is a 30 Amp, 125 Volt male plug for an RV/campground power source.

The NEMA 14-50R is a 50 Amp, 125/250 Volt Tesla charging female connector. This adapter is wired for compatibility with both Gen1 and Gen2 Mobile Connectors ONLY.

- TT-30P RV/Campground 30 Amp Power Source
- Compatible with Both Gen1 and Gen2 Mobile Connectors ONLY
- Terminals are Nickel-Plated to Prevent Rusting
- Super Durable Molded Adapter



AC WORKS® News

Mark Downs and Discounts

As you may remember we started creating new designs for the barrel adapters. As they have been rolling out into production we have been marking down the old style. Save on compact adapters by purchasing the old style (while supplies last).

Visit our website's promotional page to find out more about our discounts and coupons. We are running a BOGO discount on the E520CB520 and the E620CB620 flexible adapters.

We also post our discounts and sales on our Facebook page.

[@acworksconnectors on Facebook](#)



AC WORKS® News

RFID Warehouse Update

RFID is a technology that uses radio frequency identification to track inventory. This technology makes it easier to scan inventory in your warehouse. After doing much research, we chose a company and got started with this new technology.

This update takes time and testing to make sure our inventory numbers are correct and our products are located in their place. Our warehouse staff has been working hard going through all items and adding the tags for those items we already have on hand.

Testing occurs by checking multiple scans against our physical count numbers to be sure the products used are accurate, to figure out where we can scan from, and to offer peace of mind for future inventory report accuracies.

After scans are complete we can see the numbers online and print reports. This updated method to our inventory system has saved us so much time, allowing us to work harder on other things to help our customers.

This process update brings digital data to us from our physical inventory. Efficiency in our warehouse is vital for operations to run smoothly. Another benefit is the reduction of loss of product, which has not been a problem for us in the past but is great to have as a benefit.

As new products are shipped, they will be scanned when they arrive in our warehouse and our employee's workload is reduced. We are very excited about this new technological update.

www.ACWORKS.com
(414) 434-2220

April 2024, Issue Fifty

WRAP UP

SOCIAL MEDIA

Social Media Channels

FACEBOOK

Follow AC WORKS® on Facebook and learn more about our products, find discounts and more. You can also leave us a review on Facebook to help other customers.

INSTAGRAM

View products behind the scenes, sales, in development, and during special events.

TWITTER

Industry related news and updates, newsletters, and deals are shared here.

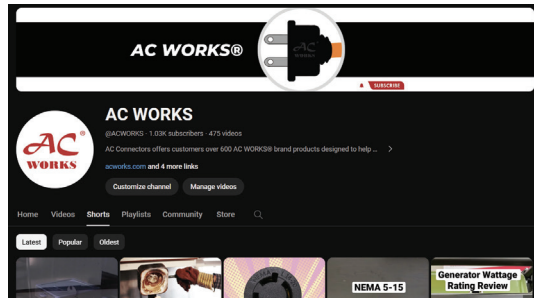
LINKEDIN

Hiring and company update events.

YouTube Channel

@ACWORKS

Top watched video created by AC WORKS® for our customers:



TIPS FROM TONY SERIES IS NOW ON YOUTUBE SHORTS

Click to watch the video.

Make sure you subscribe to our YouTube channel and like your favorite video's so we can create more content you like to watch. Email any video topics you would like to see to:

marketing@acconnectors.com

UPCOMING SHOWS

Tradeshow, Expo, and Event News

HIMSS and EWPTA Updates: Cancelled Show Participation

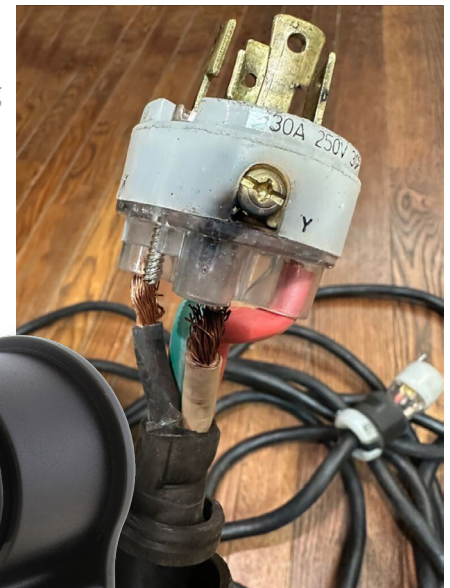
Industry News

Uses for AC WORKS® Elbow Adapters

People regularly use locking adapters improperly. They try to pull the cables from a far distance when finished using them. This causes the inner wires to become loose or unattached. Trying to unplug them from a distance is the most common cause of damage. Either people forget the plug is locking or they think pulling at certain angles will loosen the locking plug.

We are here to tell you this is the worst thing you can do with your cable and plugs. You will not pull a locking plug out of its receptacle. It requires you to twist and lock it into place for safety. When the inner wiring is stripped out, you may not see it inside the plug housing, and the cable jacket can separate. Arcing and burning can be caused by the wires being pulled away from the plug in the housing, as you can see in the image below. This can cause many problems.

The solution we have to offer is replacing your plugs with elbow connectors. There is a lot less stress on the inner wiring and jacket when pulled. It also helps to keep people from pulling on the cords. The angle at which the elbow connectors sit will not allow them to be pulled out from a distance.



IMPORTANT DATES TO REMEMBER

May

- Star Wars Day 4
- Cinco de Mayo 5
- Mother's Day 12
- Memorial Day 27

June

- Father's Day 16
- National Great Outdoors Month

Cordtec Power Corp. | AC Connectors | AC WORKS®
9811 South 13th Street - Oak Creek, WI 53154
Phone (414) 434-2220 Text (414) 323-3240
www.ACWORKS.com | info@acconnectors.com